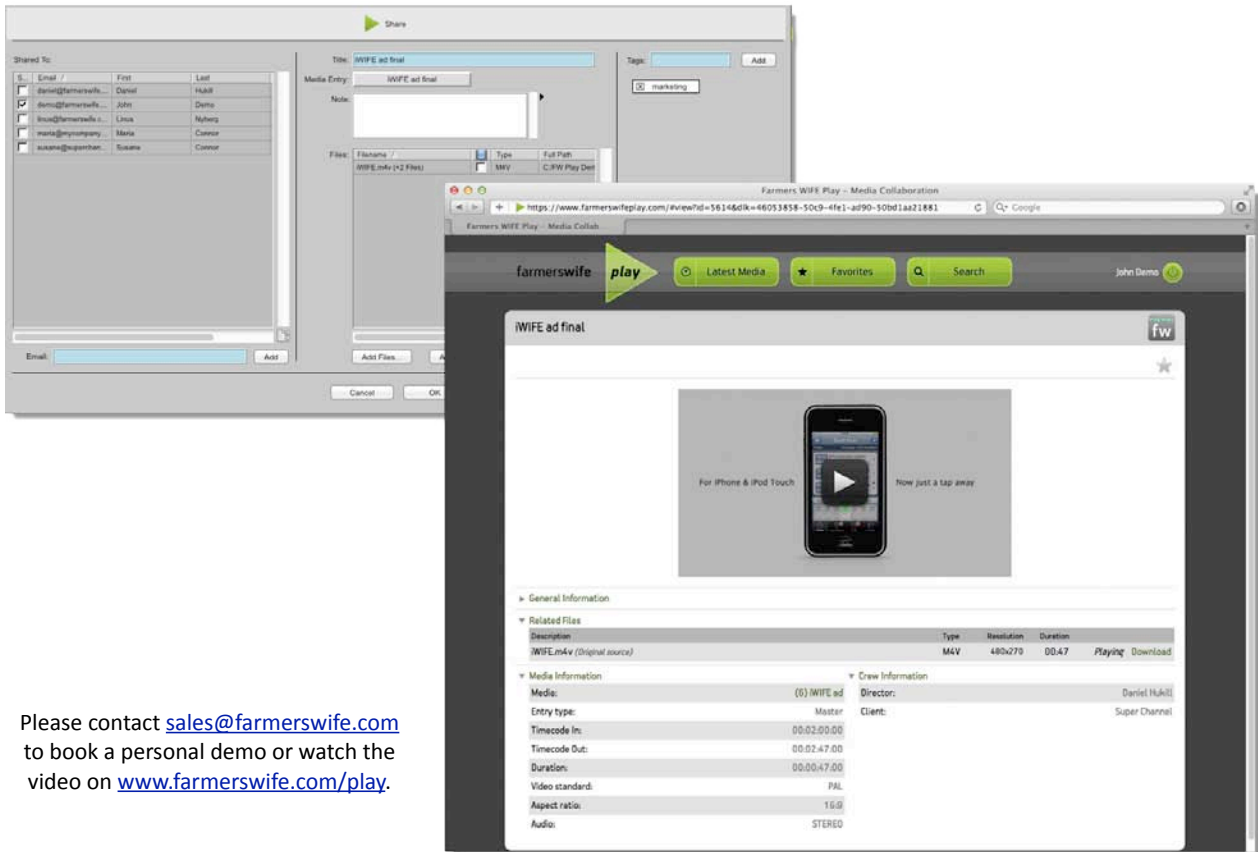


Version 4.11 contains more than 190 native changes since the release of the previous 4.10, including more than 90 new Features (16 Hot ones), 19 other changes and 81 Bug Fixes! The following summary highlights the most important features. The complete and detailed information of all new changes and features can be found in the 4.11 Release Notes (included in each WIFE Server and Client installer).

farmerswife Play - public Beta release with 4.11!

farmerswife play is a new media collaboration tool that enables post production companies to easily and securely store & share media with their advertising and production clients. play allows users to easily encode, share and collaborate on dailies and masters while keeping the raw high quality media material stored securely at the Post House.

The integration to Telestream Episode® 6 provides automatic and on-demand transcoding of movies for web, iPhone and other formats directly from within farmerswife.



Please contact sales@farmerswife.com to book a personal demo or watch the video on www.farmerswife.com/play.

New iOS Farmers WIFE 4.11 app available on Apple's App Store

Added iOS 4.2 support so older iPod's etc. can use the new version.

Get all Events of the Day from the Hourline views

A great new way to get an overview on the daily bookings (events of the day) of your preferred object selection is the 'Shared Hourline Views' feature. Once enabled in the Web Profile Manager it provides a list overview on all Bookings of the Objects included in the selected Hourline view.

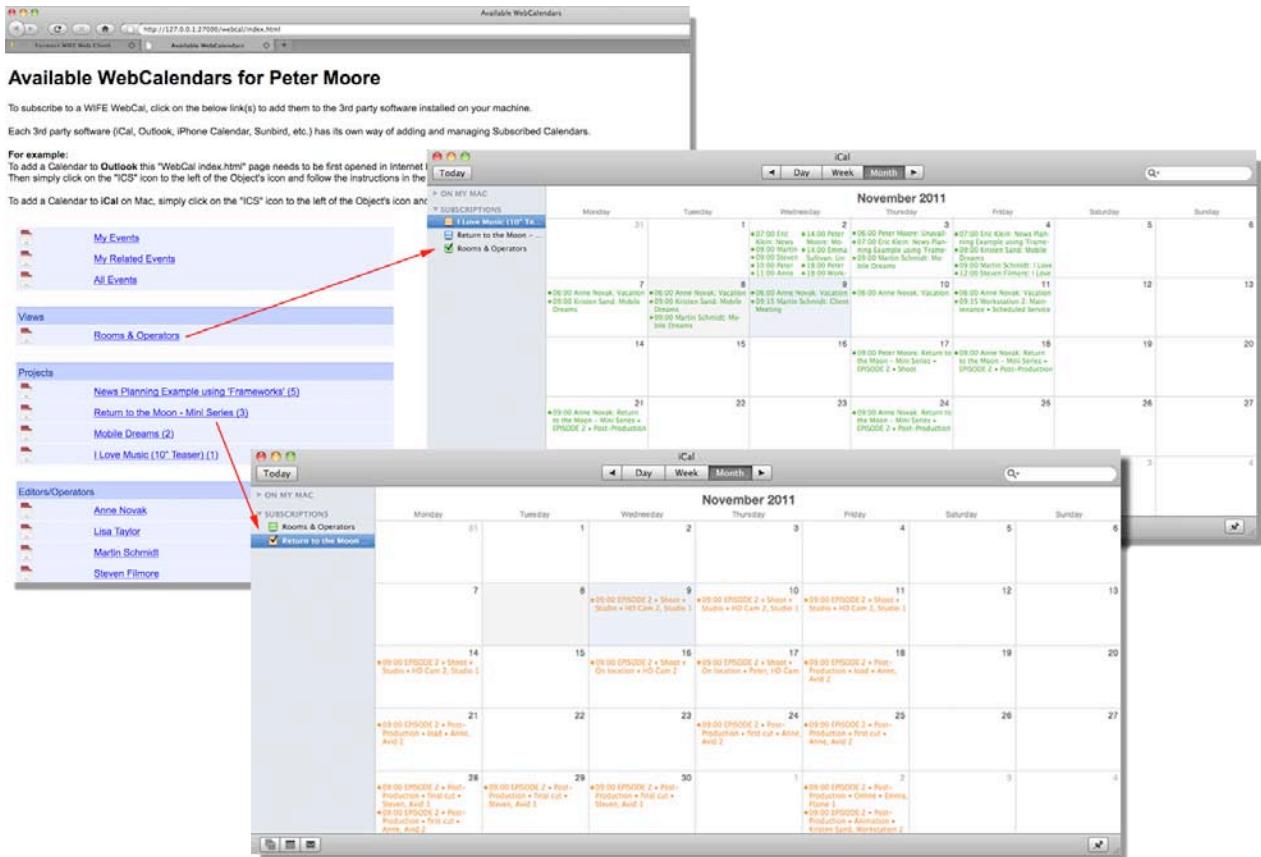
Follow Events Per Project

If you enable in the Web Profile Manager the new section "Projects > All Projects" ... you'll also have a new button in the "More" section on your iOS WIFE: using this "Projects" button will allow you to see the Events per Project.



Web Cal: Let your clients be up to date!

A User or Contact can now subscribe to a Project or an Hourline view through WebCal as well! This also allows you to print a Project overview in iCal/Outlook calendar style as a monthly overview. For more details on the configuration see the Release Notes.



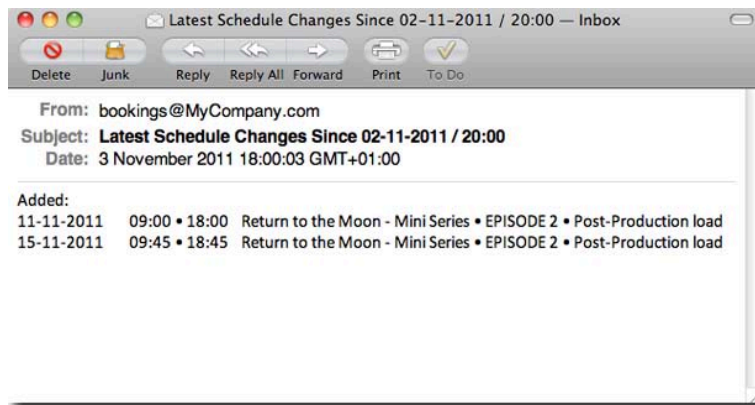
Ready to Exchange!

Now farmerswife is again able to update Events to Microsoft Exchange 2010. By using this feature WIFE will post the schedule changes to the Exchange user's calendar. The updated Events are read-only in the user's Exchange calendar.

Notify me!

The new "Event Schedule Changes Email Sendout" dramatically simplifies and replaces the legacy "Event Notifier".

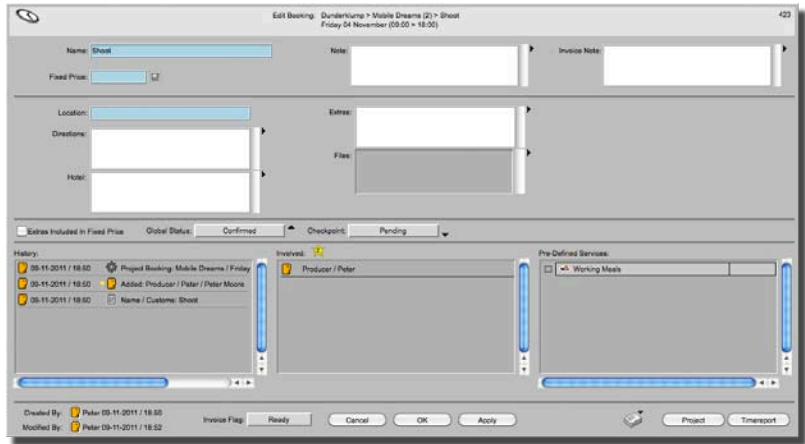
This feature sends a simple email containing all "Event Schedule Changes" to a registered user at a specific hour of the day or whenever the 'Update Now' button is pressed. For more details on the configuration please refer to the Release Notes.



Bookings in a new look

Class Bookings now have the standard fields (Name, Booking Note, Invoice Note, Fixed Price Field) displayed next to each other at the top of the window and any Custom Fields are added below inbetween the standard fields and the additional Booking information fields (Status, Checkpoints, History/Involved windows).

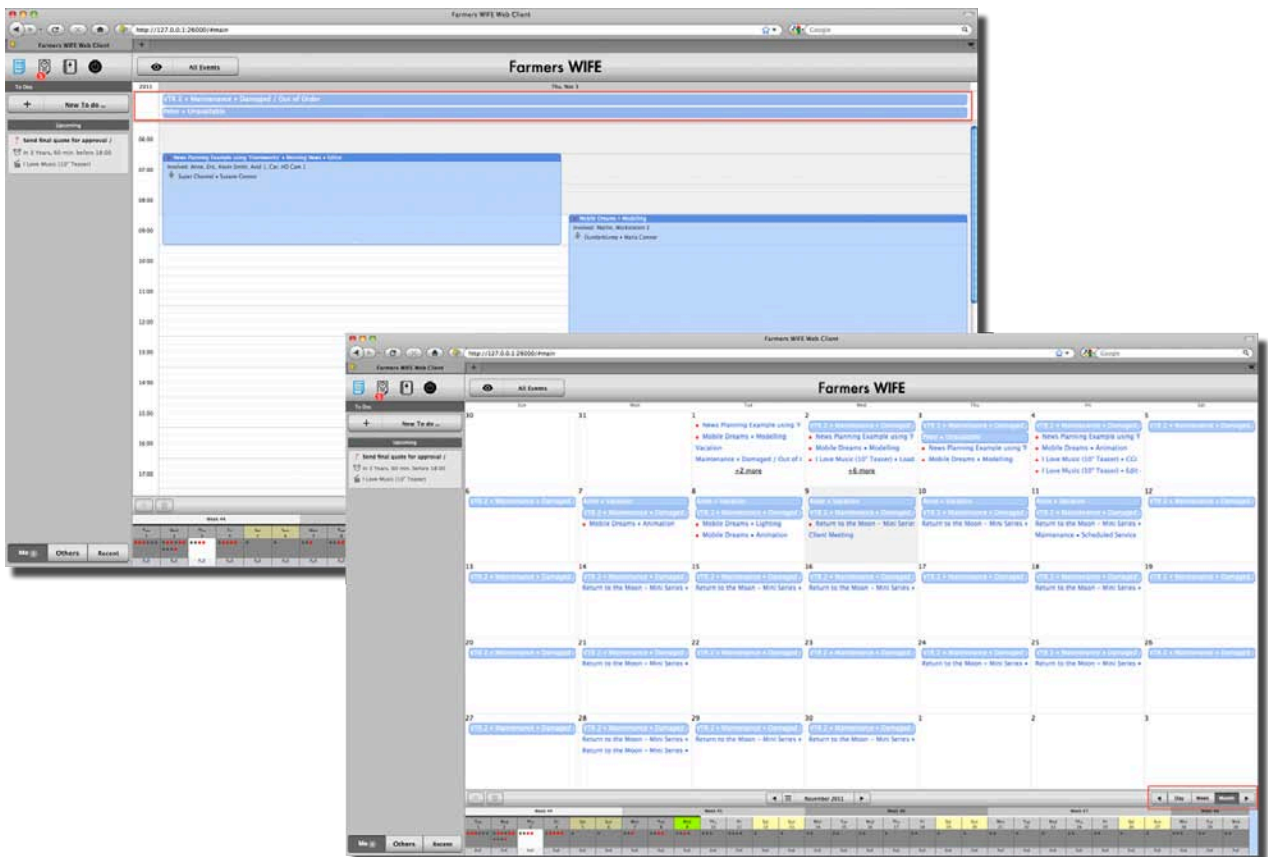
The window automatically increases height when more Custom Fields are added until it reaches its maximum height and vertical scroll bars appear.



Improved Web Client stability and new features added

The new 'Calendar Navigation' buttons allow easy navigation through the "main" Calendar by Day, Week or Month. The "long-form calendar" which always provides an overview of Events in a whole month can also still be used to jump to specific days. And they can be used together as before, e.g. move single day Bookings with drag&drop to different dates.

Especially when using the Week or Month view the new "All Day" Bookings area at the top of the main Calendar displays "All Day" Bookings. This cleans up the main Calendar views (Day & Week) and shows in a more consistent way the Bookings scheduled for a full day.



More Budgeting Features

- A new button 'Attach Selected Actuals' in the Budgeting window > Actuals pane lets you attach only the selected Actuals to the selected Budget.
- When an Actual is attached to a Budget Account, it now also uses the Activity to guess which Budget Detail it should be attached to. Also when creating a Booking in Scheduling Mode, the Activity and Rates of the dragged Budget Detail can now be used.
- Attached actuals now show a combined string with the Object Name, Activity, Booking Name, Booking Number and Date, like this: "Anne / Editing / Class Booking / Load uncut material / 13456 / 29-09-2011".

New Invoice Grouping for Financial Reports

When creating reports for Invoices using the Financial Report, typically the "Project/Media Order/Unref.Invoice" grouping has been used to show the Project and Client information, as well as some fields from the Invoice. Now there is a new grouping - Invoice - which contains all the fields from the Project grouping as well as all the relevant Invoice fields, and Invoice Custom Fields.

Don't miss the Discounts!

Previously you could configure a Print Designer template to not show Elements that have a "0" Sell Rate. This is useful when printing e.g. Invoices from the Invoice Editor or Invoice Statements from Projects based on the Final Invoice View that should show the Rooms & Rates but not the Operators if they had no Rates.

However when discounting some Financial Lines with 100% those wouldn't show up in the report either, but in this case you'd want to show the customer that they got a 100% discount. With the new setting it's possible to not show Elements that don't have a Sell Rate but still show those elements that have a Sell Rate but are 100% discounted.

Drag and drop your Frameworks and Binders!

Binders can now be dragged onto another day in the Long Form just like Bookings. This will cause all Bookings and Frameworks in the Binder to move the Start or End day. Also a day in a Framework can be dragged and dropped around now for fast and easy re-scheduling.

WIFE goes 64 on Windows

The WIFE Server application on Windows now natively supports to run in 64bit mode. To run the WIFE Server in this mode, simply start the new "Farmers WIFE 64bit.exe" located within the "system" folder which is in the WIFE Server's root installation directory. Please make sure to update any short cuts and you might have to install the 64bit JRE version for the Web Client to work.

Lost your WIFE?

Version 4.11 has a new optimized and improved Client application to Server communication protocol. When the WIFE Client application loses network connection to the WIFE Server, after reconnection to the network the WIFE Client will reconnect and you can continue to work without having to log-in again.