

Lightspeed server update Release Notes

V-K20LS and V-K80LS GPU Driver Update for Vantage 7.0

July 19, 2016

This Release Notes document describes the approved NVidia GPU drivers for Telestream Lightspeed, Lightspeed K20 and Lightspeed K80 1RU servers.

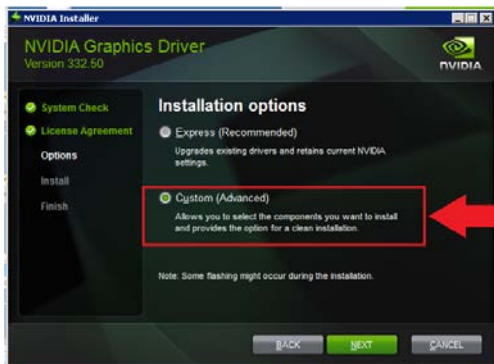
Lightspeed (V-LSK80) and Lightspeed K20 (V-LSK20)

- Lightspeed K20 server equipped with NVidia K20M GPU now support the following GPU drivers:
 - NVidia V320.78
 - NVidia V332.50
 - NVidia V354.56 ([download](#))
- Lightspeed K80 server equipped with NVidia K80M GPU now support the following GPU drivers:
 - NVidia V341.44
 - NVidia V354.56 ([download](#))

Update instructions

NVidia V354.56 Driver Installation instructions:

- 1) Download the NVidia V354.56 Installer ([download](#) - 354.56-tesla-desktop-winsrvr2008-2012r2-64bit-international-whql.exe)
- 2) Run the installer
- 3) During installation choose the “Custom” option instead of express
- 4) Check the box for “Clean Installation”
- 5) Proceed with all default options as they appear.
- 6) Step through the installer until complete.
- 7) Upon completion Reboot the server.



Support contacts

For technical support or User Guides, visit the Lightspeed support web site at <http://www.telestream.net/telestream-support/lightspeed/support.htm>