

Integrating Vantage with Grass Valley Alchemist File



Synopsis	2
Getting Started	2
Overview	3
Alchemist File Server	3
Vantage Alchemist Profile Utility	3
Vantage Alchemist File.....	5
Quick Start.....	7
Software and System Requirements.....	8
Vantage Software (for Vantage 8.0 UP3/UP4 installs only)	8
Alchemist File Server Software	8
Creating an Alchemist File Workflow	9
Copyright and Trademark Notice.....	11

Note: This guide is written for video professionals who are familiar with using Vantage. To implement applications in Vantage, you should know how to create workflows and submit jobs. If you aren't familiar with Vantage, we suggest that you review the *Vantage User's Guide* and *Vantage Domain Management Guide* as needed.

Synopsis

The Vantage integration for Grass Valley Alchemist File adds the capability to submit and receive files from an Alchemist File server's powerful conversion engine using the familiar and user friendly Vantage interface. This combines the power of Alchemist File's professional format and frame rate conversion with Telestream's best in class transcoding and media processing and workflow orchestration tools as provided by Vantage.

Key advantages of the Vantage integration of Alchemist File include:

- Automatically sends files to your Alchemist File server utilizing the powerful orchestration and intelligent decision making logic built into Vantage.
- Processes large libraries of complex media, eliminates troublesome errors, reduces processing time, and removes the need for costly manual intervention.
- Utilizes existing Alchemist File nodes to reduce processing turn-around time and improve overall media processing efficiency.
- Leverages the high-quality file conversion and frame rate processing power of your Alchemist File nodes to supplement an existing Vantage solution.
- Supports one or more Alchemist File nodes in a cluster.
- Utilizes the logging and file management tools in Vantage to review job status and progress of your Alchemist File jobs.

Getting Started

Telestream recommends that you read the [Overview](#) section to understand the general concepts and terminology specific to this application.

Next, install the Vantage software and connect to your Alchemist File server. See [Software and System Requirements](#) for details.

Note: This application note details specific aspects of the Vantage integration of Alchemist File. If you have questions regarding the configuration of your Alchemist File software, visit the relevant Grass Valley product page (https://www.grassvalley.com/products/alchemist_file/) or contact your support team at Grass Valley.

Refer to the [Quick Start](#) section if you're familiar with Vantage and building workflows, and you want to start using Alchemist File with your Vantage domain.

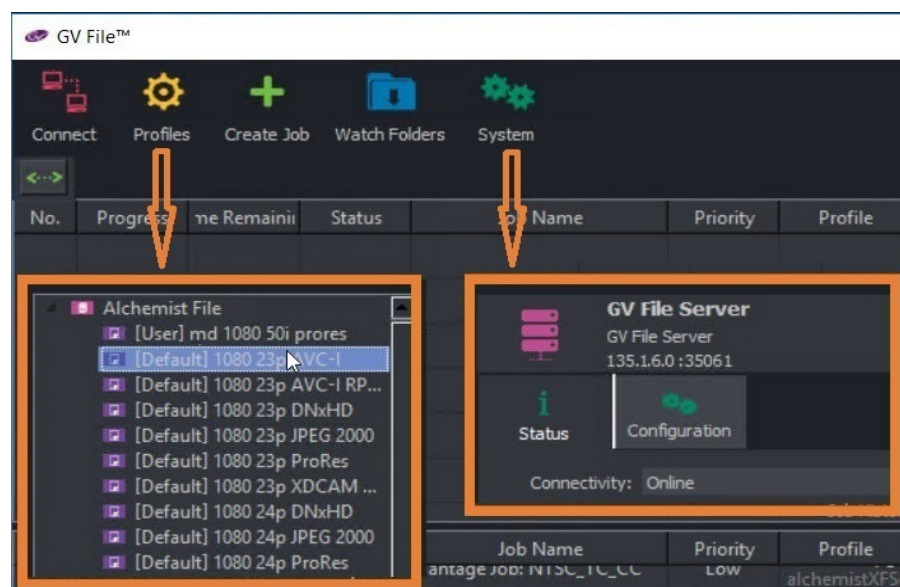
Overview

The Vantage integration of the Grass Valley Alchemist File connector is best thought of as your input and output conduit for files converted using Alchemist File.

Configurations of conversion profiles along with the heavy lifting of file conversion are done using Alchemist File. Configurations required in Vantage workflows are limited in scope and are based on settings specified on the Alchemist File server.

Alchemist File Server

The interface on your Alchemist File server provides profile and system information necessary for configuration of your Vantage workflows that utilize Alchemist File.



Profiles. Listing of default (pre-configured) and user configured profiles on your Alchemist File server. Specifies Profile Type (*Default* or *User*) and Profile Name (Example- *1080 23p AVC-I*).

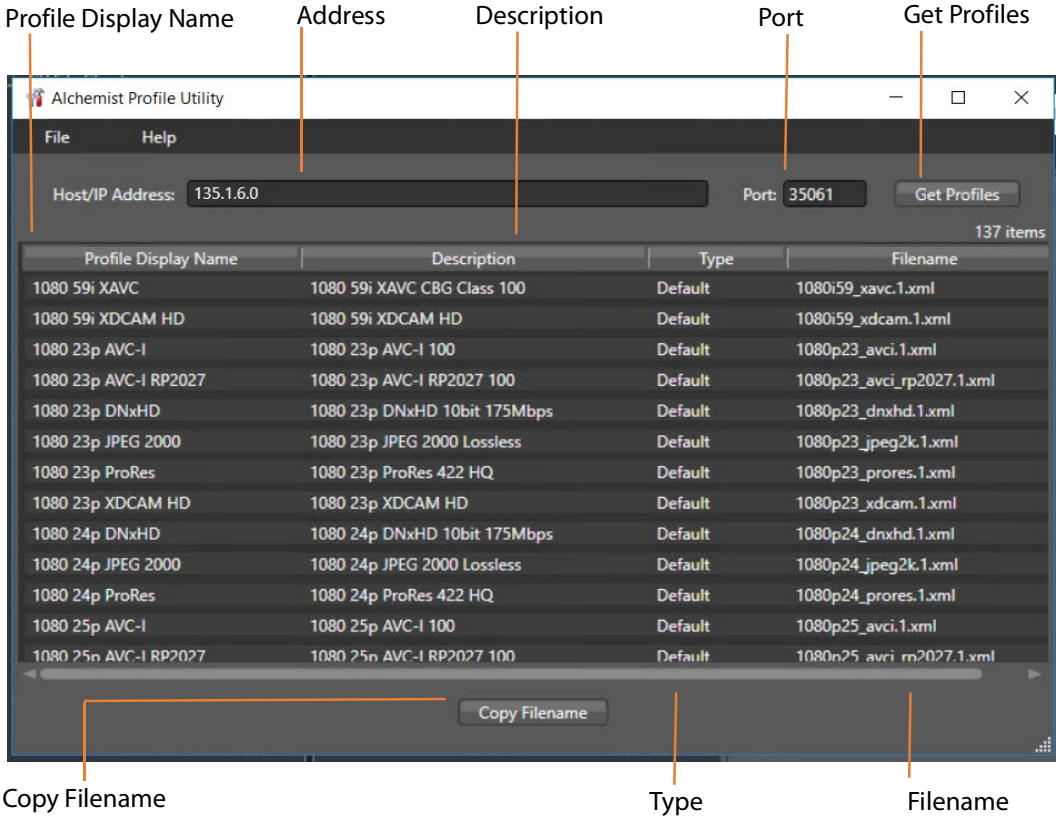
System. Alchemist File server details used for configuration of the Alchemist File action in Vantage. Specifically, Alchemist File server Address (Name or IP of the server running GV File Alchemist. Example-*135.1.6.0*) and Port (Example - *35061*).

For additional details see [Alchemist File Server Software](#).

Vantage Alchemist Profile Utility

The Vantage Alchemist Profile Utility is included with installs of the Alchemist File patch for Vantage 8.0 UP3/UP4 and allows you to view profiles present on the Alchemist File Server from your Vantage domain. With this utility you obtain exact profile parameters required for configuration of the Alchemist File connector in Vantage. For additional details see [Vantage Software \(for Vantage 8.0 UP3/UP4 installs only\)](#).

Note: After installation of the Alchemist File patch, the utility *AlchemistProfileUtility.exe* is available in your specified install location. By default this is C:\Program Files (x86)\Telestream\Vantage\Alchemist. Double click to open the utility.



Address. Server name or IP address as listed in the Alchemist File server under System.

Port. Port number as listed in the Alchemist File server under System.

Get Profiles. Populates list of existing profiles from Alchemist File server.

Profile Display Name. The Profile Display Name as listed in the Alchemist File server under Profiles. Associated with Filename for use in Vantage.

Description. Full description of profile.

Type. The profile Type as listed in the Alchemist File server under Profiles.

Filename. Filename of profile associated with Profile Display Name. The filename is used for the Alchemist File configuration in Vantage.

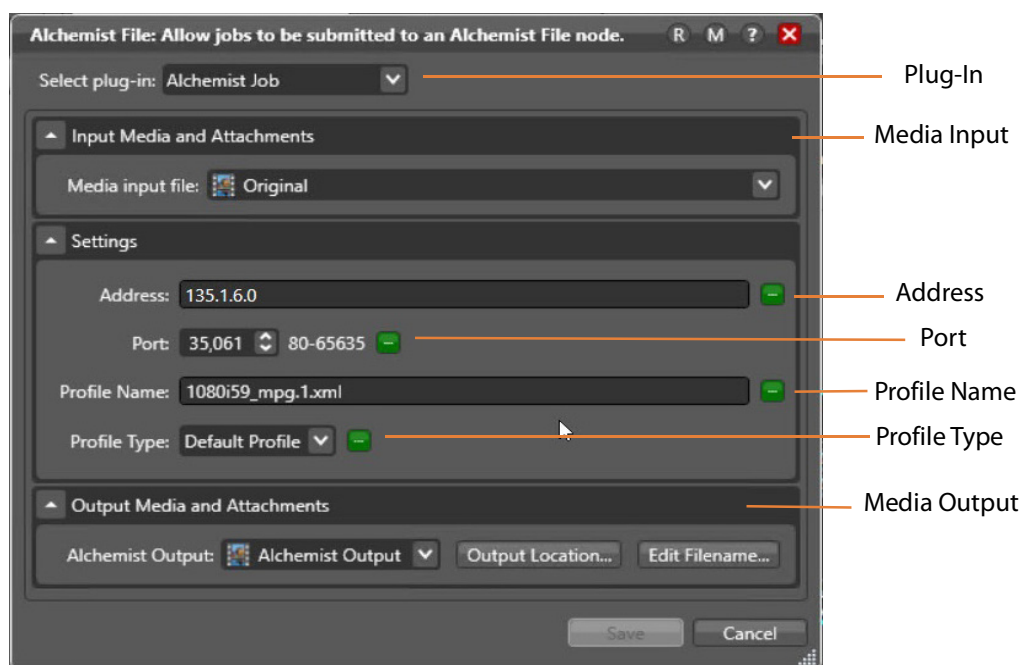
Copy Filename. Select Profile Display Name then click Copy Filename for use in Alchemist File in Vantage.

Note: The profile Type value must be manually specified when configuring your Alchemist File action in Vantage. When using the Vantage Alchemist Profile Utility, take note of the profile Type when copying the Filename and retain for subsequent use.

Vantage Alchemist File

The Alchemist File action is enabled within the Vantage Workflow Designer application with the V-ALCHEMIST-CONN license option. An overview of Alchemist File action configuration options are available below. For more details, click on the M icon to view the Alchemist File man page.

Note: These are settings as specified in the Alchemist File server node.



Plug-In. Supported plug-in options.

Media Input. Specifies Media Input by nickname. Typically this is the nickname for the input file directed from a Watch or Receive action.

Address. Server name or IP address as provided by your Alchemist File server or the Vantage Alchemist Profile Utility.

Port. Port number as provided by your Alchemist File server or the Vantage Alchemist Profile Utility.

Profile Name. Filename of profile associated with Profile Display Name as returned by the Vantage Alchemist Profile Utility.

Profile Type. The Profile Type as provided by your Alchemist File server or the Vantage Alchemist Profile Utility.

Media Output. Specifies Media Output by nickname. The output generated from the Alchemist File server is associated with a Vantage nickname so that it can be referenced in downstream actions.

Quick Start

These are the steps required to integrate Vantage workflows with your Alchemist File server to process media. Creating and configuring an Alchemist File workflow is described in [Creating an Alchemist File Workflow](#).

1. *Install the Required Software*—before you can execute jobs in Vantage that interact with your Alchemist File server, you need to meet the software requirements and install the appropriate software (see [Software and System Requirements](#)).
2. *Create and Activate your Alchemist File Workflows*—Create at least one workflow that includes an Alchemist File action and configure it, depending on your application and requirements. Use the [Vantage Alchemist Profile Utility](#) to obtain profile and server information. Once your workflow is configured, activate and allow jobs to complete (see [Creating an Alchemist File Workflow](#)).

Software and System Requirements

Before you can use Alchemist File in your Vantage domain, the following software must be installed/available and operating:

Vantage Software (for Vantage 8.0 UP3/UP4 installs only)

Your Vantage domain consisting of the following components should be installed, licensed, and operating properly:

- Vantage 8.0 with Update Pack 3 or Update Pack 4.
- Obtain and activate the appropriate Vantage license(s). Contact Telestream Sales for full licensing details and requirements.
 - The **V-ALCHEMIST-CONN** license integrates Alchemist File server software with Vantage. This allows for one session through a single instance of the Alchemist File action. If an integration with an Alchemist File cluster containing more than one node of Alchemist File is required, additional Alchemist File actions and concurrent sessions can be enabled with the **V-ALCHEMIST-CONN-EXP** license.
- Vantage Alchemist File patch installer. Visit the [Telestream Support](#) page to download updates for your version of Vantage. This patch is listed under Additional Patches as *Grass Valley Alchemist Connector*. If you need further assistance, contact the support team at Telestream.

Alchemist File Server Software

Install and configure Alchemist File server software or use an existing Alchemist File server installation.

Note: This application note details specific aspects of the Vantage integration for Alchemist File. If you have specific questions regarding the configuration of your Alchemist File server software, visit the relevant Grass Valley product page (https://www.grassvalley.com/products/alchemy_file/) and contact your support team at Grass Valley.

Note: The Grass Valley Alchemist software must be hosted on a separate server and not the server which runs your Vantage Transcode or Analysis products.

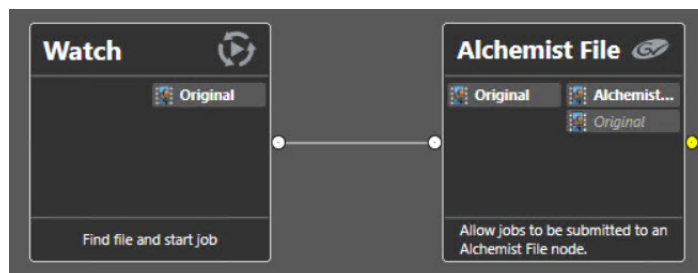
Creating an Alchemist File Workflow

Creating Alchemist File workflows to integrate with your Alchemist File server is straightforward and similar to other workflow configurations you are familiar with in Vantage. For additional workflow design concepts, consult the Vantage User Guide and Vantage Domain Management Guide available directly in Workflow Designer and the Vantage Management Console or from the Telestream website.

Note: One Alchemist File action is required for each Grass Valley Alchemist Node in a Grass Valley Alchemist File Cluster that receives jobs from Vantage.

Note: After you install the Alchemist File patch, you can access the Vantage Alchemist Profile Utility (*AlchemistProfileUtility.exe*) in your specified install location. By default this is C:\Program Files (x86)\Telestream\Vantage\Alchemist. Double click to open the utility.

- Add a Watch (or other supported origin actions) and Alchemist action(s) to your workflow and connect accordingly. In the Watch action inspector:
 - Configure for a single Media File and complete action configuration
- In the Alchemist File action inspector:
 - Select the *Alchemist Job* plug in
 - Specify Media Input nickname
 - Specify Address
 - Specify Port
 - Specify Profile Name
 - Specify Profile Type
 - Specify Alchemist Output nickname
- After you configure your workflow, activate it to submit files for processing.



When you submit media files to the workflow, Vantage sends a request to the Alchemist File server to convert the file using the parameters defined in the Alchemist File action(s) in the workflow. When Alchemist File finishes converting the file, it sends it to the output location specified in the Alchemist File action(s).

Note: Although you can submit multiple jobs to an Alchemist File workflow in Vantage, either sequentially or as a group, only one job is processed at a time by the Alchemist File server. Subsequent jobs are queued until the Alchemist File server becomes available.

You can view the job status of your Alchemist File jobs as you would any other job in Vantage. In the Job Status views tab:

- Successfully completed jobs display in blue as Completed.
- Failed jobs have an Alchemist File action outlined in red and display a job status of Failed. Double click on the failed action for full error details.
- Under View Binder (located in right click context menu) you can view job outputs.

More Information

For more information on using the Alchemist File action in Vantage, click the 'M' icon in the title bar to view help pages. For general information on using Vantage, click the '?' icon to open the Vantage User's Guide. Visit the Telestream web site and [Telestream Support](#) for additional information and the latest updates.

Copyright and Trademark Notice

Copyright © 2021 Telestream, LLC and its Affiliates. All rights reserved. No part of this publication may be reproduced, transmitted, transcribed, altered, or translated into any languages without written permission of Telestream, LLC. Information and specifications in this document are subject to change without notice and do not represent a commitment on the part of Telestream. Specifications subject to change without notice.

Telestream, CaptionMaker, Cerify, Episode, Flip4Mac, FlipFactory, Flip Player, Gameshow, GraphicsFactory, Lightspeed, MetaFlip, Post Producer, Prism, ScreenFlow, Split-and-Stitch, Switch, Tempo, TrafficManager, Vantage, VOD Producer, and Wirecast are registered trademarks and Aurora, Cricket, e-Captioning, Inspector, iQ, iVMS, iVMS ASM, MacCaption, Pipeline, Sentry, Surveyor, Vantage Cloud Port, CaptureVU, Cerify, FlexVU, Prism, Sentry, Stay Genlock, Aurora, and Vidchecker are trademarks of Telestream, LLC and its Affiliates. All other brand, product, and company names are the property of their respective owners and are used only for identification purposes.

