



---

# Using PTZOptics Cameras in Wirecast

---



# Using PTZ in Wirecast

## Introduction

The PTZ Controller enables you to control PTZOptics brand cameras. This feature is implemented using the VISCA-over-IP protocol, an IP-based protocol which sends specific camera control commands to the camera to change Pan, Tilt, Zoom, Focus, Exposure, and White Balance. You can configure, interact with, and create up to 255 preset settings in the PTZ Controller window.

---

**Note:** For more detailed information on how to use PTZ in Wirecast, consult the *PTZ Controller* chapter in the Wirecast User Guide.

---

## Topics

- [Setting Up PTZOptics Camera](#)
- [Configuring Wirecast](#)
- [Setting Up Wirecast Shots](#)
- [Copyright and Trademark Notice](#)

## Setting Up PTZOptics Camera

PTZOptics cameras ship with a Static IP address set to 192.168.100.88. To communicate with your cameras on your network, you will need to change this to be in range of your existing network.

To set up your PTZOptics camera IP address, follow these steps:

1. To obtain a usable IP address for your camera, ensure you can access the video feed of your camera over HDMI or SDI (not IP). Since the IP address will be changing, you need to use HDMI or SDI to access the video feed. Connect the HDMI port of the camera to a TV, or if you are already using a capture card with Wirecast simply add the source to your document and queue it up in Preview.
2. To set your Camera to DHCP (Automatic) and make it addressable by your PC, enter "# \* 4" (sequentially) using the camera remote control. (Do not press the buttons simultaneously.) The camera will display a message in the video feed that says "DHCP OPEN", and then the camera will automatically reboot.

---

**Note:** If your camera did not display DHCP OPEN and restart automatically, you may need to contact PTZOptics for assistance unless you are proficient in manual IP assignment procedures not covered below.

---

3. When the video feed displays, enter "# \* 4" (sequentially) using the remote control to view the new DHCP address. The camera will now always request a new IP address, whenever it is plugged into a new network.

---

**Note:** This means the IP address can change, which is generally not preferable in a live environment.

---

If you prefer to set a static IP address for a permanent installation, follow these steps:

1. Open a web browser, and enter the IP address obtained in the previous steps. You can view that IP address by entering "# \* 4" (sequentially) using the remote control
2. Enter *admin* for both the username and password.
3. Select *Network* in the navigation options, located at the top-left part of the web page.
4. Find the DHCP/STATIC setting.
5. Set IP Configuration Type to *Fixed IP Address*.
6. When the confirmation dialog window displays, click *Apply*, then click *OK*.
7. Recycle to power on the camera to reboot it.

---

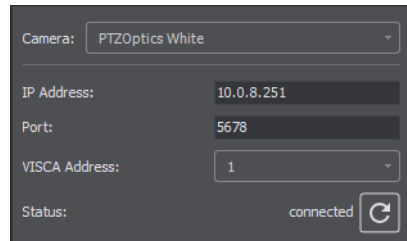
**Note:** If you are have trouble setting the IP address on your camera, contact PTZOptics for assistance.

---

# Configuring Wirecast

Now that you have an IP address for your camera, Wirecast can be configured by following these steps:

1. Select *Window > PTZ Controller* to display the PTZ Controller panel.

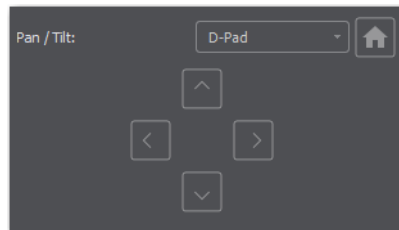


2. Select the video ingestion method from the Camera menu. This will be an HDMI or SDI capture device, or NDI if your device supports it.
3. Enter the IP address for your camera (determined previously in the camera setup).
4. Port and VISCA Address are set automatically to the default values for PTZOptics camera. You do not need to change these.
5. Click the Connection button to the far right of Status. Status will display *connected* when a connection is made.

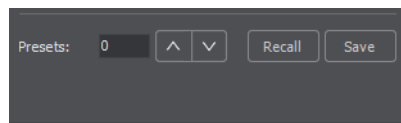
## Setting Up Wirecast Shots

To setup a Wirecast shot using a camera setup, follow these steps:

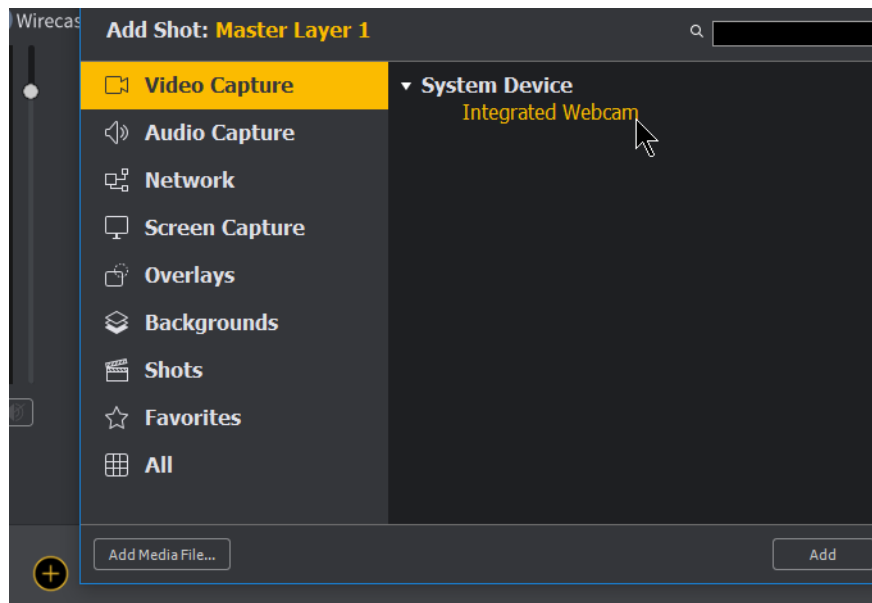
1. Select *D-Pad* from the Pan/Tilt menu and move the camera to a desire position.  
(Pan the camera by clicking the left and right arrows, and tilt the camera by clicking the up and down arrows.)



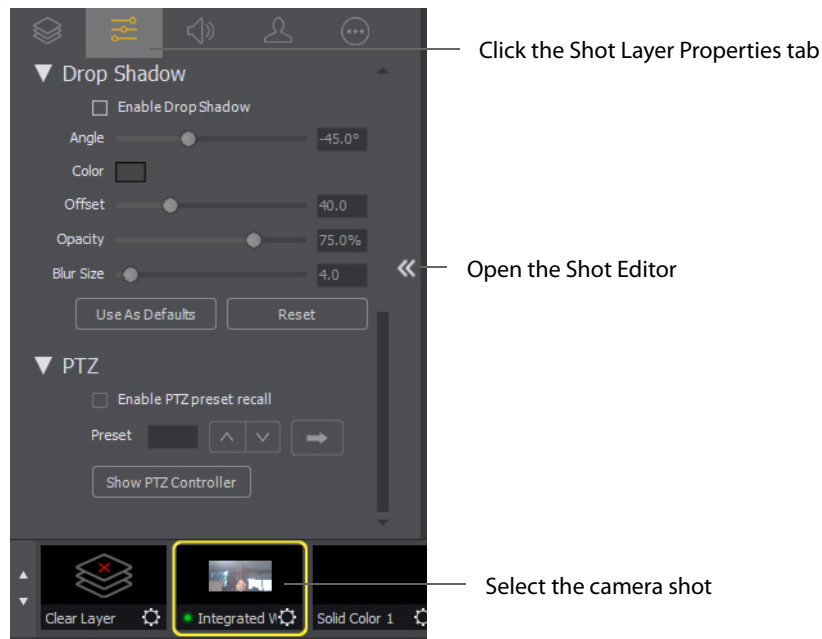
2. Enter a preset number (0 to 255) and click the Save button to save this camera position.



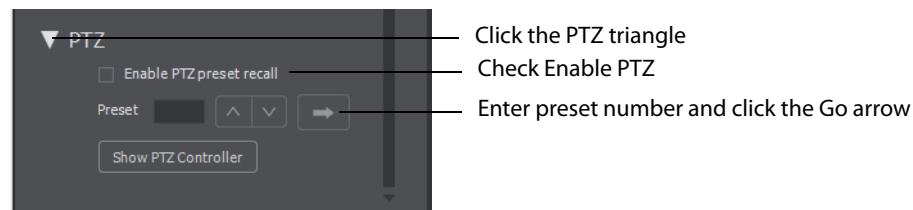
3. In Wirecast, create a camera shot.



4. Select your camera shot, open the Shot Editor, and click the Shot Layer Properties tab.



5. Click the PTZ triangle to display the PTZ controls. Check the *Enable PTZ preset recall* check box. Enter a preset number and click the Go arrow.



You are now able to move you camera by changing shots.

## Copyright and Trademark Notice

©2018 Telestream®, LLC. All rights reserved. No part of this publication may be reproduced, transmitted, transcribed, altered, or translated into any languages without written permission of Telestream, Inc. Information and specifications in this document are subject to change without notice and do not represent a commitment on the part of Telestream.

Telestream, CaptionMaker, Episode, Flip4Mac, FlipFactory, Flip Player, Lightspeed, ScreenFlow, Switch, Vantage, Wirecast, Gameshow, GraphicsFactory, MetaFlip, and Split-and-Stitch are registered trademarks and MacCaption, e-Captioning, Pipeline, Post Producer, Tempo, TrafficManager, VidChecker, and VOD Producer are trademarks of Telestream, LLC. All other trademarks are the property of their respective owners.

All other brand, product, and company names are the property of their respective owners and are used only for identification purposes.