



USING VANTAGE WITH AVID INTERPLAY PRODUCTION ASSET MANAGER AND MEDIA COMPOSER



Synopsis 2
Creating and Configuring Avid Interplay Production Workflows .. 4
Configuring Stand-alone Media Composer Workflows 8
Copyright and Trademark Notice..... 13

Synopsis

This app note describes how to create and configure Avid Interplay Production and Avid Media Composer workflows in Vantage.

Vantage has an option for an AAF encoder that provides two modes: Interplay and Media Composer. Vantage delivers media by checking it into Avid Interplay Production using Interplay Web Services. For stand-alone systems, the AAF encoder delivers AAF and MXF files to Avid Media Composer.

Note: *The AAF encoder requires a license from Telestream. Contact your Telestream representative to purchase a license.*

Examples of usage:

- Vantage encodes files to DV, creating them directly on ISIS storage within an Interplay environment. Vantage also checks the asset into Interplay using Interplay Web Services.
- Vantage encodes files to DNxHD, creating an AAF file with supporting MXF files. These files are placed in the appropriate Media Composer folder for access by an editor.

Supported formats:

- 30, 40, & 50 Mb/Sec IMX for NTSC & PAL
- DV25 NTSC & PAL
- DVCPRO 25 & 50 for NTSC & PAL
- DNxHD 720p 25 for 60 & 90 Mb/sec
- DNxHD 720p 29.97 for 75 and 110 Mb/sec
- DNxHD 720p 50 for 115 & 175 Mb/sec
- DNxHD 720p 59.94 for 145 & 220 Mb/sec
- DNxHD 720p 23.976 for 60 & 90 Mb/sec
- DNxHD 1080i 25 for 120 & 185 Mb/sec
- DNxHD 1080p 25 for 36, 120 & 185 Mb/sec
- DNxHD 1080i 29.97 for 145 & 220 Mb/sec
- DNxHD 1080p 29.97 for 145 & 220 Mb/sec
- DNxHD 1080p 23.976 115 & 175 Mb/sec

Requirements for Using Vantage with Interplay Production

The AAF encoder allows you to check assets directly into Interplay. In order to do this, the following requirements must be met:

- Interplay Production 2.3 or later
- Interplay Web Services 2.3 or later
- Vantage 3.0 or later

Note: *Interplay 2.3 has been fully qualified. Contact Telestream about Interplay 2.4 and later.*

Since Interplay Web Services are not installed or distributed by default, your Interplay administrator should acquire, install, and configure Interplay Web Services before Vantage and Interplay asset check-in can be used.

Avid recommends installing Interplay Web Services on a completely separate computer from the Interplay database. Always connect to Interplay and Web Services using a fully-qualified DNS name, which is registered with Forward and Reverse look up tables in DNS.

Note: *Please consult Avid support for full details regarding properly installing and configuring Interplay Web Services.*

The Vantage system must be a client of the Avid storage system, allowing Vantage to write media files to the Avid workspace. If you are using an Avid ISIS storage system, the Avid ISIS client must be installed on the Vantage server with proper credentials for read/write access to the Avid workspaces. Workspaces must be mounted as UNC paths.

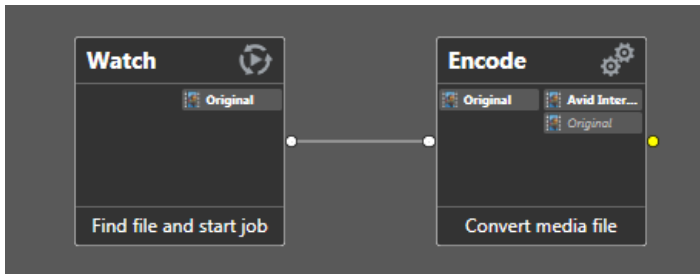
Note: *This app note assumes you know how to create and configure Vantage workflows and how to submit jobs. Review the Vantage User's Guide for details.*

Creating and Configuring Avid Interplay Production Workflows

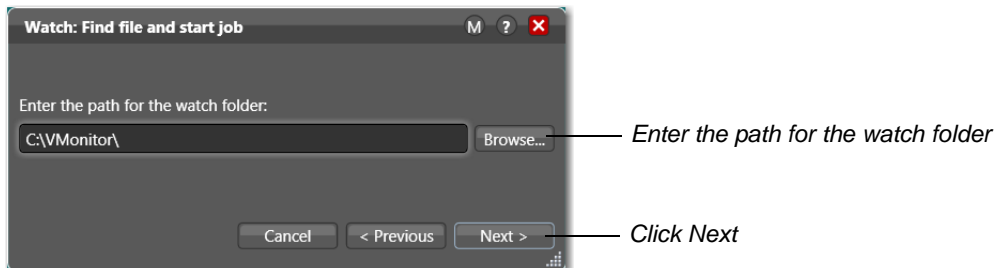
When creating files for Interplay, AAF and MXF files are created and directly checked into the Avid Interplay Asset Manager, and then placed in the ISIS workspace.

To create and configure workflows that encode and deploy files into Interplay Production, follow these steps:

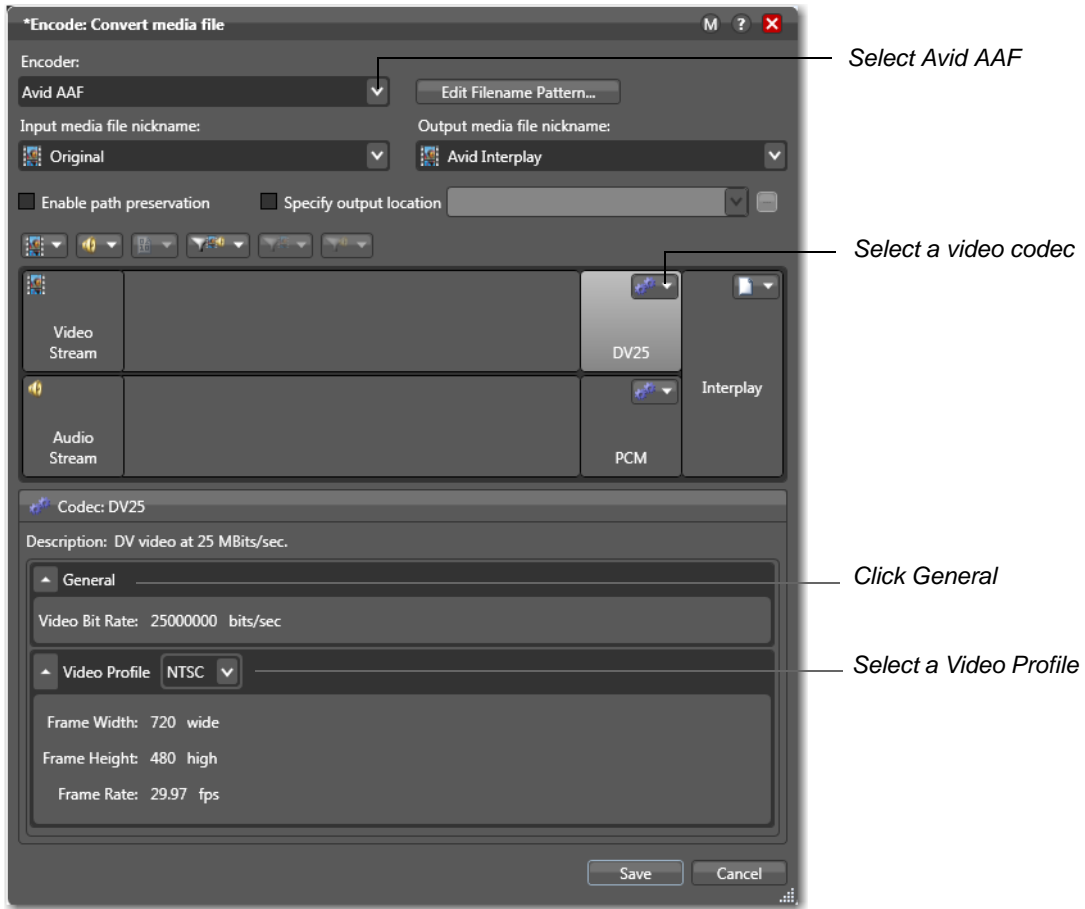
1. Create a Vantage workflow with two actions: Watch and Encode. The Watch action monitors the target directory for input files and submits jobs. The Encode action creates the Avid media files and checks them into Interplay Production:



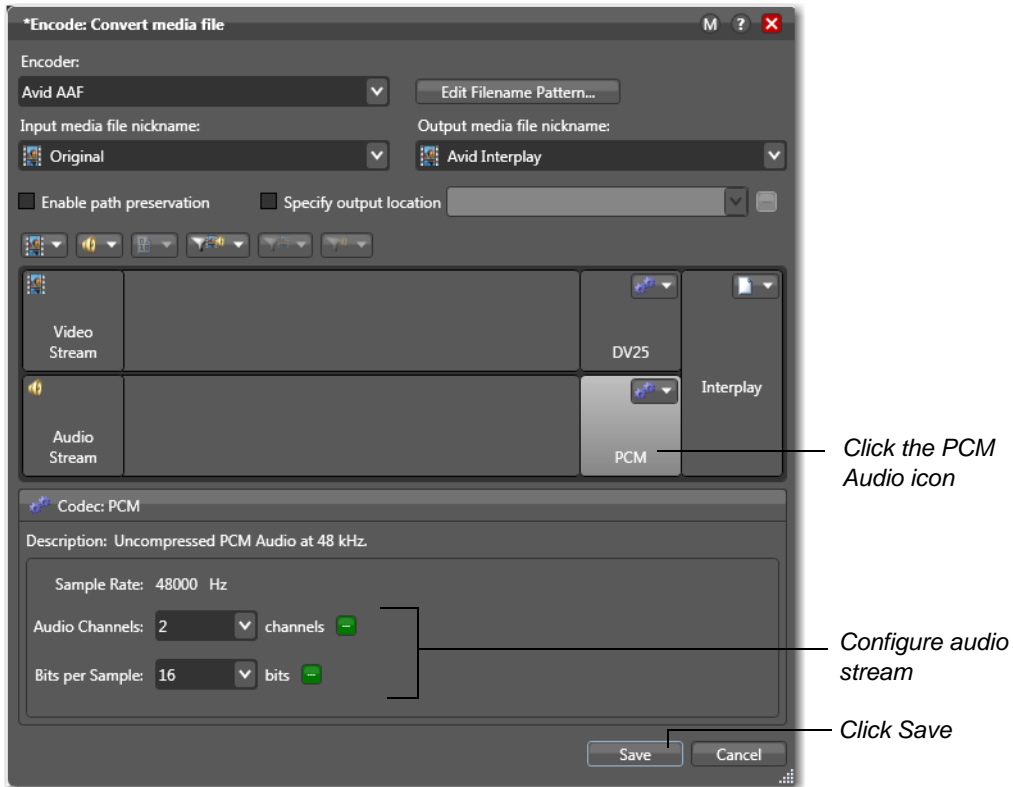
2. To configure the Watch action, open its inspector. Navigate through the inspector panels to select *Any Media* and *Windows File System*, then enter the path for the watch folder and click Next:



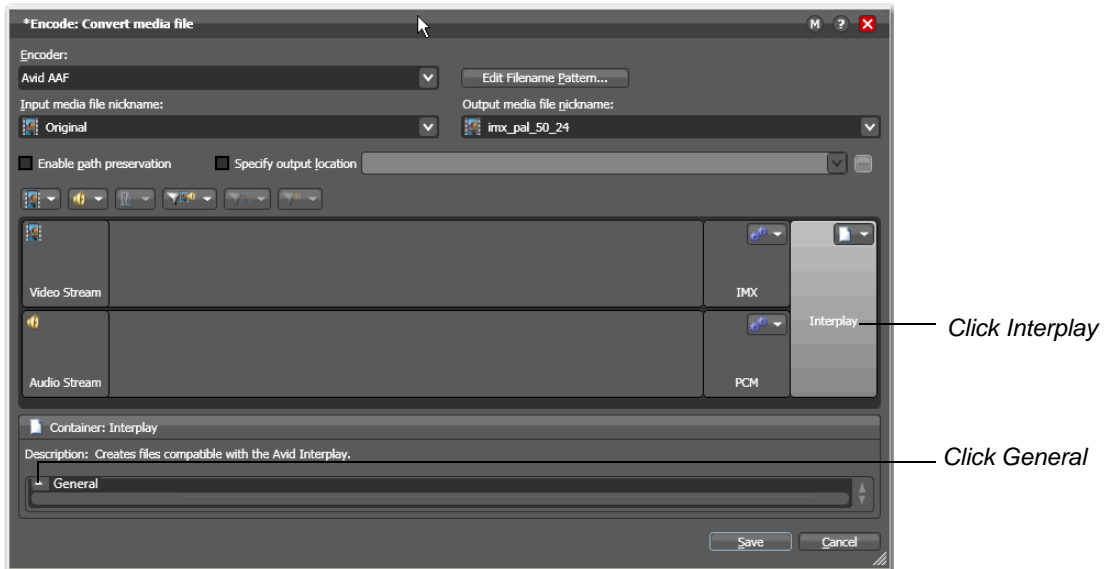
3. To configure the video stream, open the Encode action inspector. Select *Avid AAF* from the Encoder menu and select a video codec from the drop-down menu (DV25 in this example). Click *General* to display the Video Bit Rate, then select a *Video Profile* which automatically configures the video stream:



- To configure the audio stream, click the *PCM* icon and set *Audio Channels* and *Bits per Sample* as required. Click *Save* to save your settings:



- To submit the encoded MXF media files directly to Interplay Production, click the *Interplay* icon and click *General* to open up the deployment configuration panel.



- In the configuration panel, enter or browse to the UNC path of the workspace location where the `.aaf` files are written. If this directory does not exist, it must be created before submitting workflow jobs.

Note: *To avoid potential problems, the AAF folder should not be in a folder or path that the Interplay Media Indexer is indexing.*

Enter or browse to the UNC path of the workspace location where the `.mxf` files are written.

Note: *The Vantage server requires the Avid ISIS client to write files to a workspace. Additionally, the location of the MXF media files must be a workspace indexed by the Interplay Media Indexer in order for the files to be discovered.*

Enter the *Web Service URI*, which must contain an IP address and a port number of the server running Interplay Web Services. It must be in the following format:

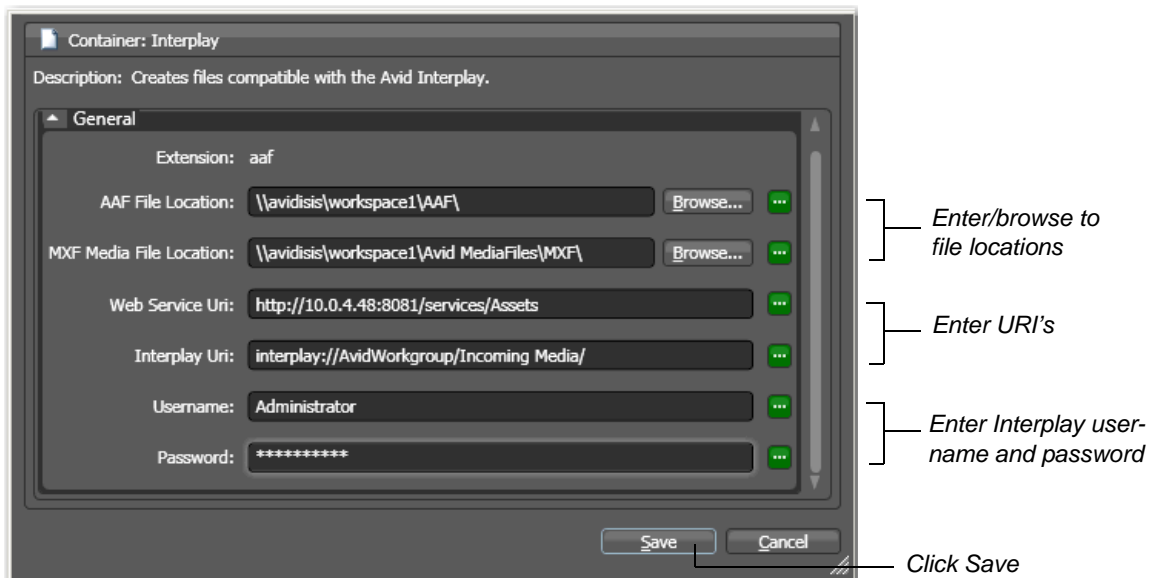
`http://<ipAddress>:<port>/services/Assets`

Enter the *Avid Interplay URI*. This is the name of the Avid Interplay Production Manager workgroup and the location where the files are accessed in Interplay. It must be in the following format:

`interplay://<InterplayWorkgroupName>/<FileCheckinLocation>`

Enter the required Interplay *Username* and *Password*.

Click **Save** to save your settings:



Note: *The Avid ISIS workspace must be mounted.*

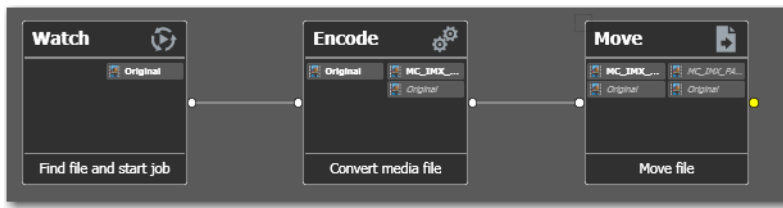
- To test this workflow, submit a media file to the watch folder. Alternatively, you can open the job status window, activate the workflow, select the *Submit Job* button, then browse to and submit your source file.
- When the job has completed, the files will be written to the workspace, checked into Avid Interplay Production, and available for playout.

Configuring Stand-alone Media Composer Workflows

When creating Media Composer output, Vantage creates an MXF file for each encoder stream along with an AAF reference file. The AAF file contains a reference to the absolute location of the MXF media files. All files are placed in the Vantage Store. A Move action is required to deliver the files to the Avid ISIS workspace.

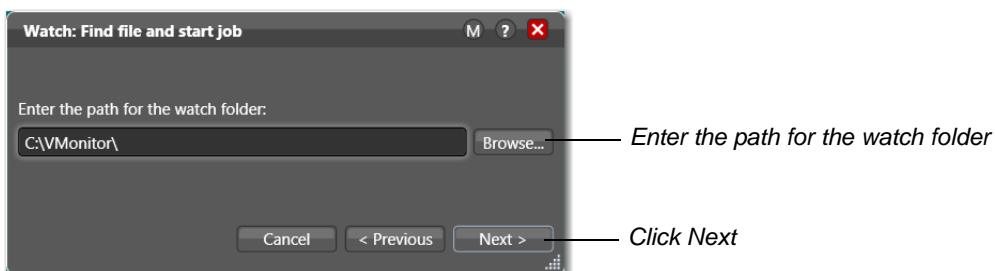
To create and configure workflows that encode and deploy Avid Media Composer files, follow these steps:

1. Create a Vantage workflow with three actions: Watch, Encode, and Move. The Watch action watches for input files and submits jobs, the Encode action creates the Media Composer MXF files, and the Move action delivers these files to the Avid system workspace:

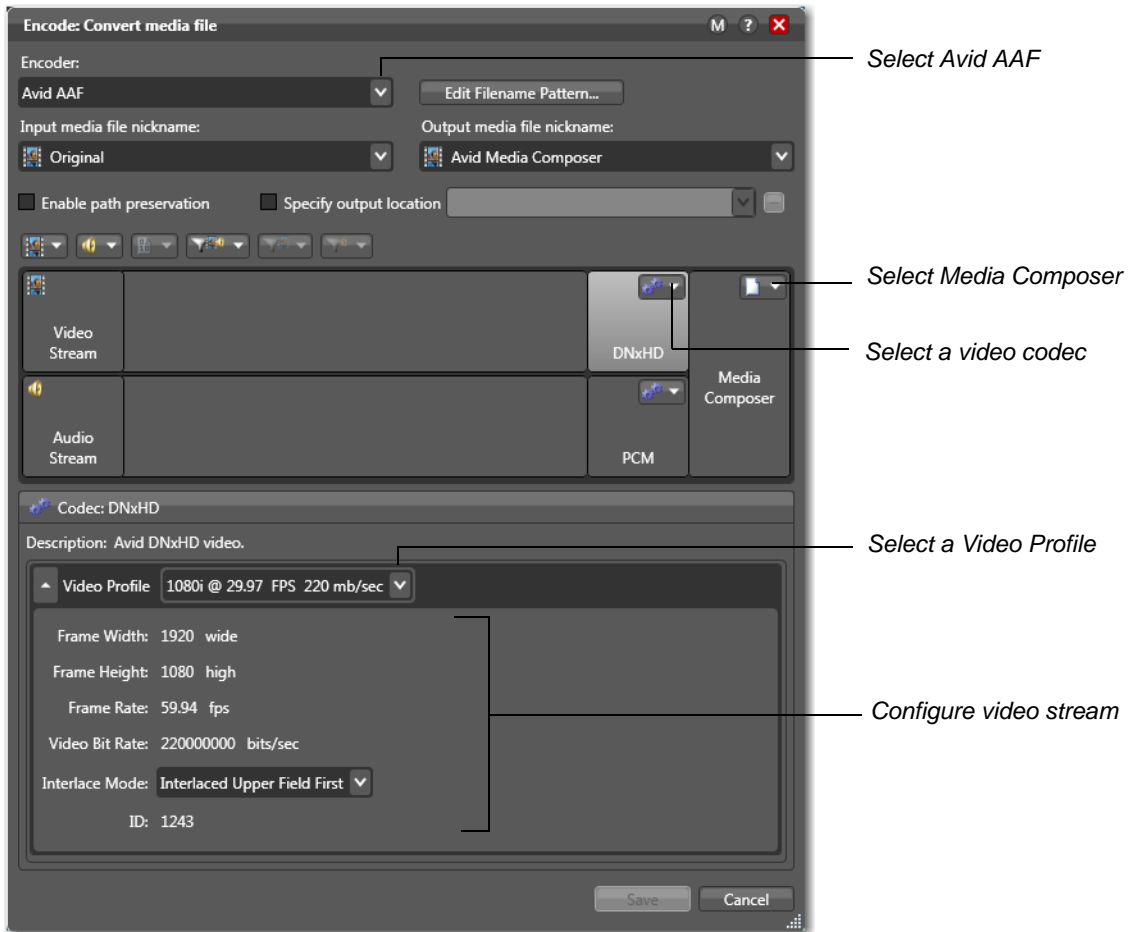


Note: If the Vantage Move or Copy action does not find the files in the reference location, the Vantage Avid AAF encoder Media Composer container option will check the `AvidMediafiles\MXF\1` directory. Therefore, in your Vantage workflow you should specify the root of the Avid system as the destination. For example, if `\\AvidStorageName\WorkspaceName\` is specified as the destination, the AAF file is moved (via the Move action) to `\\AvidStorageName\WorkspaceName\
<aafname>\<aafname>.aaf`, and the MXF files are moved to the `\\AvidStorageName\WorkspaceName\Avid Mediafiles\MXF\1` directory.

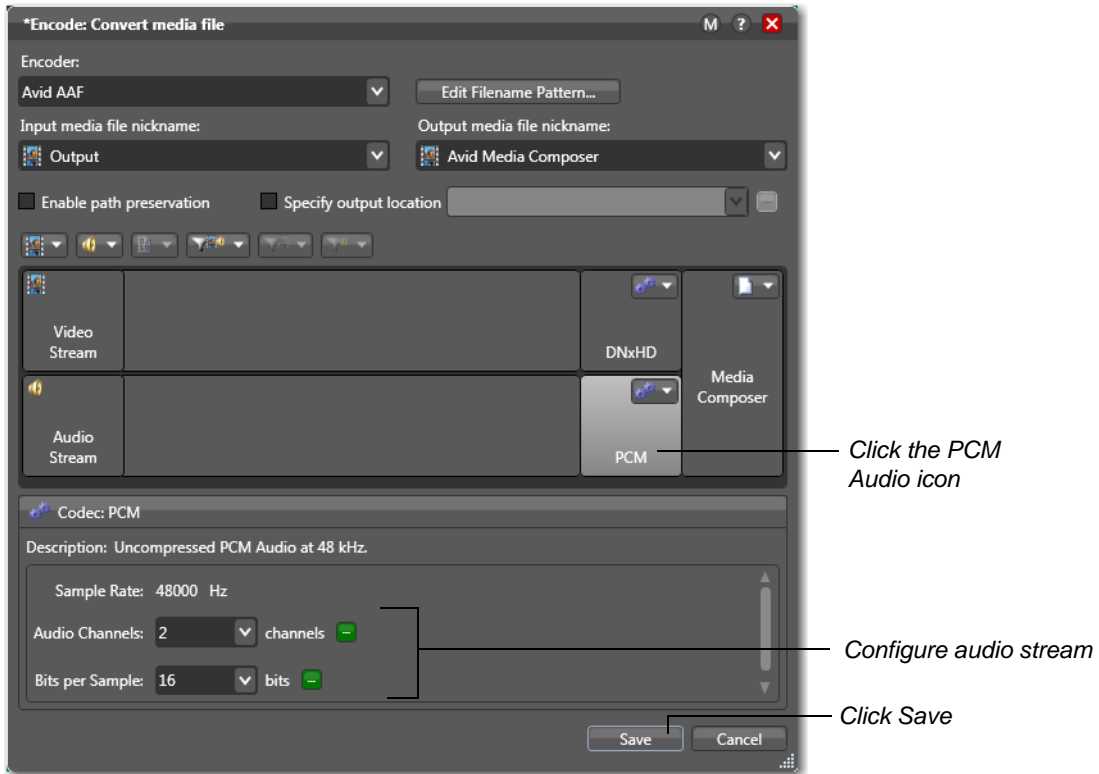
2. To configure the Watch action, open its inspector. Navigate through the inspector panels to select *Any Media* and *Windows File System*, then enter the path for the watch folder and click Next:



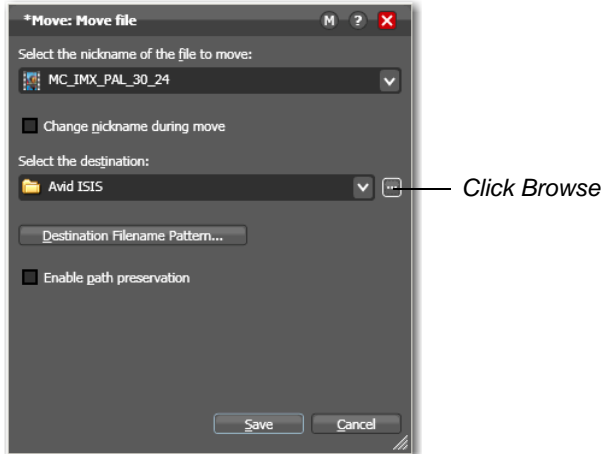
- To configure the video stream, open the Encode inspector. Select *Avid AAF* from the Encoder menu and select *Media Composer* from the container drop-down menu. Select *Video Codec* from the drop-down menu (DNxHD in this example), and select a *Video Profile* which configures the video stream:



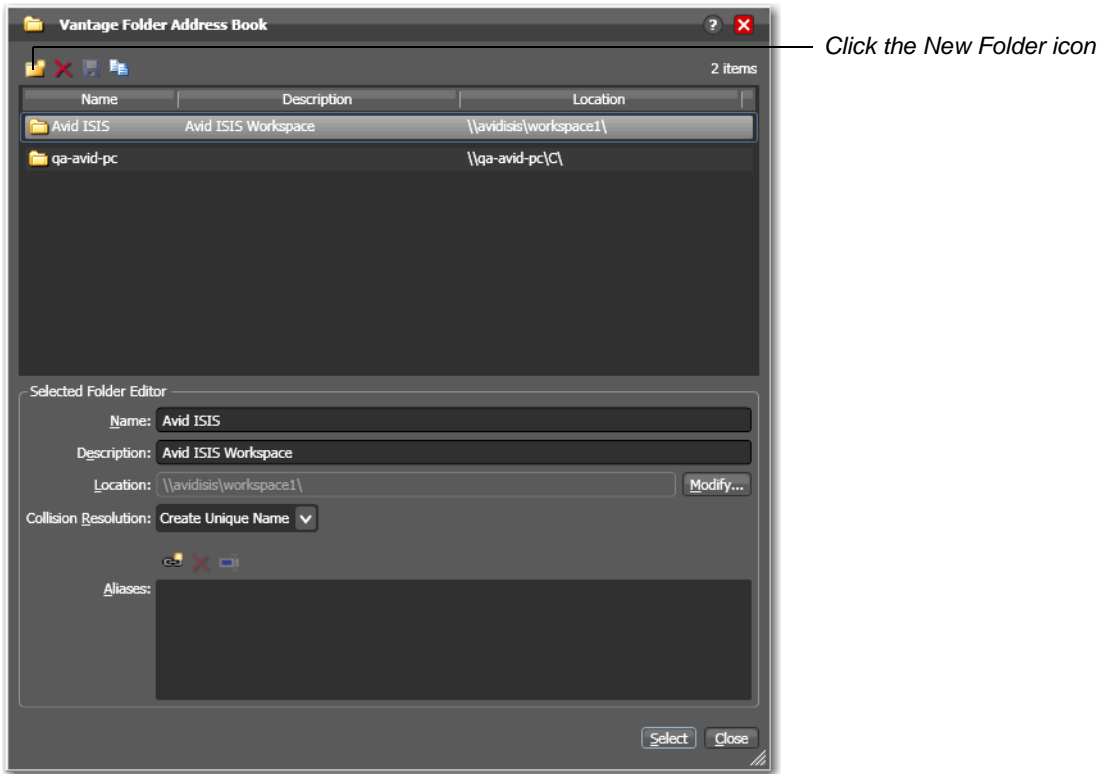
- To configure the audio stream, click the *PCM* icon and set *Audio Channels* and *Bits per Sample* as required. Click *Save* to save your settings:



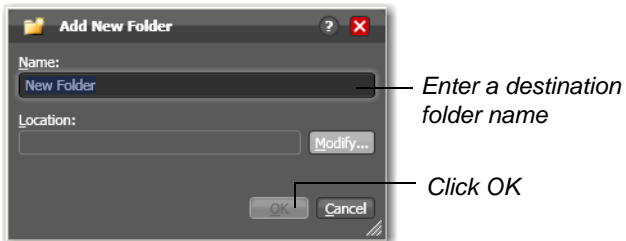
- To configure the Move action, open its inspector and click the Browse button:



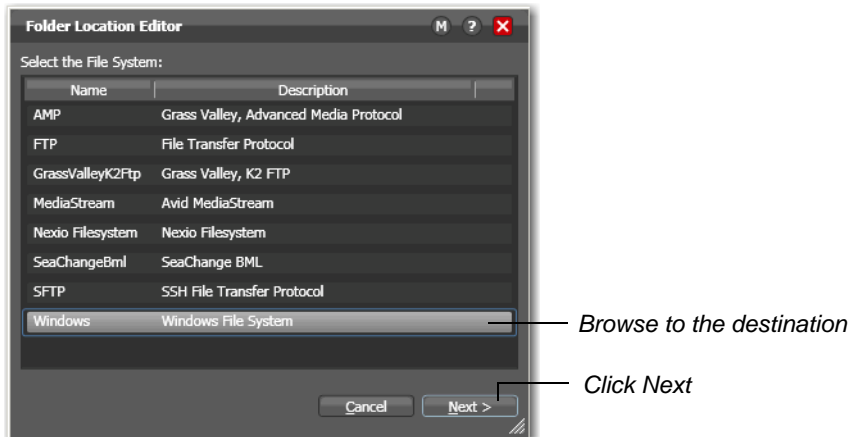
6. Select an existing folder or click the *New Folder* icon:



7. Enter a destination folder name and click OK:

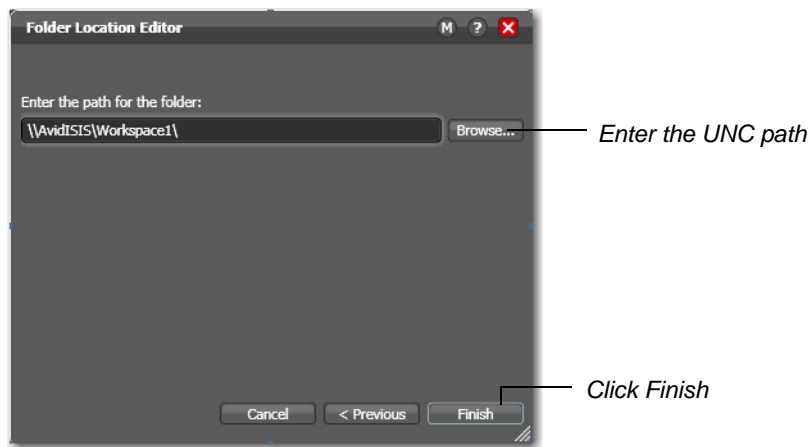


8. Select Windows File System, and click Next:



Note: The Avid ISIS workspace must be mounted.

9. Enter the UNC path for the Avid workspace and click Finish:



Note: If the Vantage Move or Copy action does not find the files in the reference location, the Vantage Avid AAF encoder Media Composer container option will check the `AvidMediafiles\MXF\1` directory. Therefore, in your Vantage workflow you should specify the root of the Avid system as the destination. For example, if `\\AvidStorageName\WorkspaceName\` is specified as the destination, the AAF file is moved (via the Move action) to `\\AvidStorageName\WorkspaceName\
<aafname>\<aafname>.aaf`, and the MXF files are moved to the `\\AvidStorageName\WorkspaceName\Avid Mediafiles\MXF\1` directory.

10. To test this workflow, place a media file in the watch folder. Open the Job Status window in the Workflow Designer and wait for the job to finish. Import the AAF file into Media Composer and play the resulting media files.

Copyright and Trademark Notice

©2011 Telestream, Inc. All rights reserved. No part of this publication may be reproduced, transmitted, transcribed, altered, or translated into any languages without written permission of Telestream, Inc. Information and specifications in this document are subject to change without notice and do not represent a commitment on the part of Telestream.

Telestream, Vantage, Flip4Mac, FlipFactory, Episode, ScreenFlow, Wirecast, GraphicsFactory, MetaFlip, MotionResolve, and Split-and-Stitch are registered trademarks and Pipeline, Launch, and Videocue are trademarks of Telestream, Inc. All other trademarks are the property of their respective owners.