

Installing and Using the Vantage Panel for Adobe Premiere Pro®

This App Note applies to Vantage version 6.3 Update Pack 3 and later	Overview	2
	Requirements.....	3
	Licensing and Support	3
	Limitations.....	3
	Installing the Vantage Panel*	3
	Configuration	4
	Configuration Troubleshooting.....	6
	Using the Vantage Panel	7
	Connecting to Vantage	7
	Workflows menu	7
	Variables and Metadata Labels.....	8
	Submitting a Job	8
	Example Vantage Workflow	9
	Removing the Vantage Panel	10
	Copyright and Trademark Notice	11

Overview

The Vantage Panel for Adobe Premiere Pro® is a free add-on panel that you can add to the Adobe Premiere Pro UI to send a sequence directly to Vantage.

Using the Vantage Panel simplifies interaction between Adobe Premiere Pro and Vantage. With the Vantage Panel you can submit an Adobe Premiere Pro project together with variables and metadata to Vantage for processing, including automatic interaction with Adobe Media Encoder to flatten and export the sequence to a file.

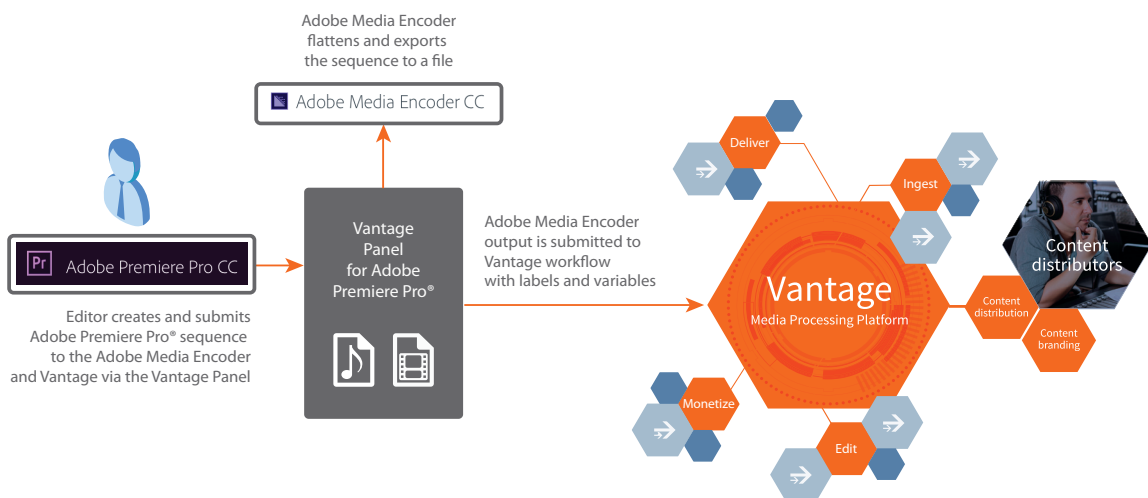
Specifically, the Vantage Panel allows you to:

- Submit an Adobe Premiere Pro sequence directly to your Vantage system without leaving the editing environment.
- Select the Vantage workflow to which you want to submit the job
- Input values into Vantage metadata variables associated with the job submission.

Adobe Premiere Pro Process Workflow

1. From Adobe Premiere Pro use the Vantage Panel to send an edit sequence and associated metadata directly to a Vantage workflow.
2. The Vantage Adobe Panel first flattens the sequence using a predefined Adobe Media Encoder preset, writing the flattened file to a network location accessible to the Vantage domain (see the [Configuration](#) section for details about defining the preset and folder location).
3. When the flattened sequence file is complete, the Vantage Panel sends a submit message containing the selected Vantage workflow, the location of the flattened file and any required metadata variable values directly to Vantage for processing.

Vantage Panel for Adobe Premiere Pro Process Flow



Requirements

In order to use this panel you will need:

Adobe System:

- Adobe Premiere Pro CC 2015 (or later) installed and operating
- Vantage Panel for Adobe Premiere Pro® CC 2015 (or later)
- System requirements for Adobe Premiere Pro can be found at <https://helpx.adobe.com/premiere-pro/system-requirements.html>

Vantage System:

- Vantage 6.3 Update Pack 3 (or later) running on a separate server
 - Vantage SDK Service (installed by default)

Licensing and Support

- Adobe Premiere Pro CC 2015 is purchased from and licensed by Adobe.
- Vantage is purchased from and licensed by Telestream.
- Support for the Vantage Panel for Adobe Premiere Pro® CC is provided by Telestream. If Telestream determines that an issue requires Adobe support, Telestream will refer the customer to Adobe.

Limitations

- Each instance of the Vantage Panel for Adobe Premiere Pro® CC works with one Vantage domain at a time.
- This app note describes functionality of Vantage 6.3 Update Pack 3 with the Vantage Panel for Adobe Premiere Pro® version 1.0. Features may differ if you have different versions.
- The Metadata Label entry feature is currently not supported in version 1.0.

Installing the Vantage Panel*

Follow the steps below to install the Vantage Panel on your Adobe Premiere Pro CC system. Before installing make sure that:

- Your INTERNET connection is working.
 - The Creative Cloud desktop app is installed with File Syncing turned on.
1. Open the Adobe Premiere Pro CC application.
 2. From the Window menu, select *Browse Add-ons* from the drop-down menu. Adobe's Creative Cloud Add-ons web page will open in your default browser.
 3. From Adobe's Creative Cloud Add-ons web page, search for Vantage.
 4. Select the Vantage add-on for Premiere Pro CC, and click on the *Free* button just below the panel name. The Vantage panel downloads and installs automatically.
 5. Proceed to the [Configuration](#) section of this guide.

***Note:** Adobe Extension Manager installations are not supported.



Configuration

After the Panel is installed you will need to set up the configuration parameters that apply to your specific system setup. The Vantage administrator can do this by updating the Panel's configuration file (`vantage_config.json` shown below) with the appropriate values for the required parameters shown below:

"vantageDomain"—The Vantage domain IP Address or fully qualified DNS name

"exportPathLocal"—This is a 'local' folder path, from the perspective of Adobe Media Encoder, where Media Encoder will write the flattened sequence to be processed by Vantage. It can be a mapped drive letter on a Windows system or a network connected volume on a Mac OS X system.

"exportPathAlias"—This is a network path alias, from the perspective of Vantage, to the flattened sequence file exported by the Adobe Media Encoder. This reference will be used by Vantage to read and process the exported file. Vantage will require full read permissions.

"exportPreset"—This is a local path, from the perspective of Adobe Media Encoder, to the Media Encoder preset used to flatten the sequence.

Sample `vantage_config.json` file for Adobe Premiere Pro CC installed on Windows System

```
{
  "vantageDomain": "http://vantage-node1:8676",
  "exportPathLocal": "S:\\\\Share\\\\Panel",
  "exportPathAlias": "\\\\\\\\\\\\\\\\vantage-node1\\\\\\\\Share\\\\\\\\Panel",
  "exportPreset": " C:\\\\Users\\\\\\\\adminuser\\\\\\\\Documents\\\\\\\\Adobe\\\\\\\\Adobe Media
Encoder\\\\\\\\9.0\\\\\\\\Presets\\\\\\\\.epr"
}
```

Sample `vantage_config.json` file for Adobe Premiere Pro CC installed on Mac OS X System

```
{
  "vantageDomain": "http://vantage-node1:8676",
  "exportPathLocal": "/Volumes/Share/Panel",
  "exportPathAlias": "\\\\\\\\\\\\\\\\vantage-node1\\\\\\\\Share\\\\\\\\Panel",
  "exportPreset": "/Users/localadmin/Documents/Adobe/Adobe Media Encoder/9.0/Presets/
AdobeTest.epr"
}
```

Follow these steps to update the Vantage Panel configuration file:

1. The first time the Vantage Panel is launched from Adobe Premiere Pro CC, it self-generates the configuration file to be edited. From within Premiere Pro CC, select Window > Extensions > Vantage to launch the Vantage Panel. After the panel launches, close it immediately. This generates the `vantage_config.json` configuration file that will need to be edited.

2. Locate and open the *vantage_config.json* configuration file in a simple text editor that does not add hidden control characters to the file:

On a Windows system the configuration file is located here:

```
C:\Users\[your user account]\Documents\Adobe\Premiere Pro\9.0\Profile-  
[your user account]
```

On a Mac OS X system the configuration file is located here:

```
/Users/[your user account]/Documents/Adobe/Premiere Pro/9.0/Profile-  
[your user account]\vantage_config.json
```

3. Enter your Vantage IP Address or DNS host name. Change the value associated with "vantageDomain" to specify the server that hosts the Vantage SDK Service. Replace "vantage-node1" with your Vantage IP Address or DNS host name. In most Vantage installations the port number should not change:

```
Windows/Mac OS X— "vantageDomain": "http://[YOUR VANTAGE SERVER  
HERE]:8676",
```

4. Enter a local path, from the perspective of the Media Encoder system, to the location where Adobe Media Encoder will write the flattened sequence. Change the value associated with "exportPathLocal" with a drive letter or mapped drive letter on a Windows system, or a connected volume on a Mac OS X system.

```
Windows— "exportPathLocal": "S:\\\\Share\\\\Panel",
```

```
Mac OS X— "exportPathLocal": "/Volumes/Share/Panel",
```

This location must be shared so that it can be accessed by Vantage.

5. Enter a network path alias, from the perspective of Vantage, to the flattened sequence file exported by the Adobe Media Encoder. This reference will be used by Vantage to read and process the exported file created by Media Encoder. Vantage will require full read permissions. This is the same location as in the previous step expressed as a UNC path:

```
Windows/Mac OS X— "exportPathUNC":  
"\\\\\\\\\\\\\\\\myserver\\\\\\\\Users\\\\\\\\myusername\\\\\\\\myfoldername",
```

6. Finally, enter the path to the Adobe Media Encoder preset (EPR) file you plan to use to flatten the sequence. This can be a custom preset located in Adobe Media Encoder's preset folder or a system preset located in the systempreset folder:

```
Mac OS X System Preset— "exportPreset": "/Applications/Adobe  
Premiere Pro CC 2015/Adobe Premiere Pro CC 2015.app/Contents/MediaIO/  
systempresets/3F3F3F3F4D6F6F56/HD 1080i 29.97, H.264, AAC 48kHz.epr"
```

```
Mac OS X Custom Preset— "exportPreset": "/Users/localadmin/Documents/  
Adobe/Adobe Media Encoder/9.0/Presets/AdobeTest.epr"
```

```
Windows System Preset— "C:\\\\Program Files\\\\\\\\Adobe\\\\\\\\Adobe Media  
Encoder CC 2015\\\\\\\\MediaIO\\\\\\\\systempresets\\\\\\\\3F3F3F3F4D6F6F56\\\\\\\\HD  
1080i 29.97, H.264, AAC 48kHz.epr"
```

```
Windows Custom Preset— "exportPreset": " C:\\\\Users\\\\\\\\admin-  
user\\\\\\\\Documents\\\\\\\\Adobe\\\\\\\\Adobe Media Encoder\\\\\\\\9.0\\\\\\\\  
Presets\\\\\\\\.epr"
```

Note: Create and use custom Media Encoder presets that best support your desired workflow. Flatten sequences to uncompressed or a specific codec type that best meets your requirements. Consult Adobe Media Encoder help for details on creating custom presets.

7. Save the *vantage_config.json* configuration file in its original location, and reopen the Vantage Panel from within Adobe Premiere Pro CC. (If the configuration is changed at any time, close and reopen the panel to import the changes.)

Once the configuration file is updated, the Vantage Panel will be correctly populated.

Configuration Troubleshooting

The following tips are provided to help you troubleshoot your Vantage Panel configuration.

Correct Use of Slashes

For forward slashes (which are used on Mac OS X), a single slash should be used.

Example: /Volumes/HDD/Users/John/Desktop/Project

However for backward slashes, which are used on Windows and for UNC paths, four slashes are needed to represent a single slash.

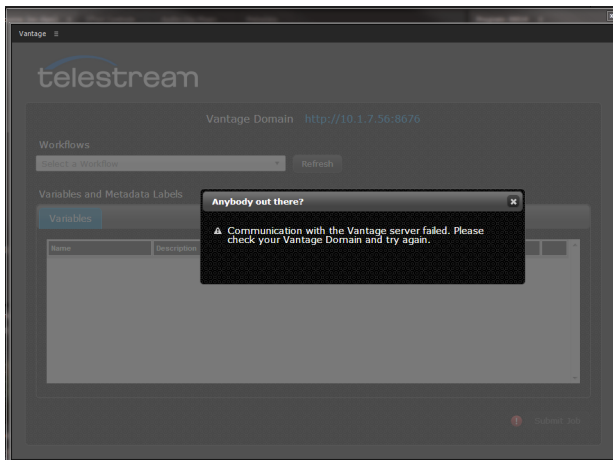
Example 1: C:\\\\Share\\\\Subfolder

Example 2: \\\\hostname\\\\Share\\\\Subfolder

Correct Use of Quotations Marks

If the configuration file contains any curly quotation marks or other unexpected characters, the Vantage panel does not work and displays the following error message when it is started from within Adobe Premiere Pro.

Panel Error Display



To correct the problem, replace all curly quotation marks with straight quotation marks. See the file excerpts below for incorrect (red) and correct (blue) examples.

Incorrect: "exportPathAlias": "\\\\\\\\\\\\\\\\qa-computer\\\\\\\\Share",

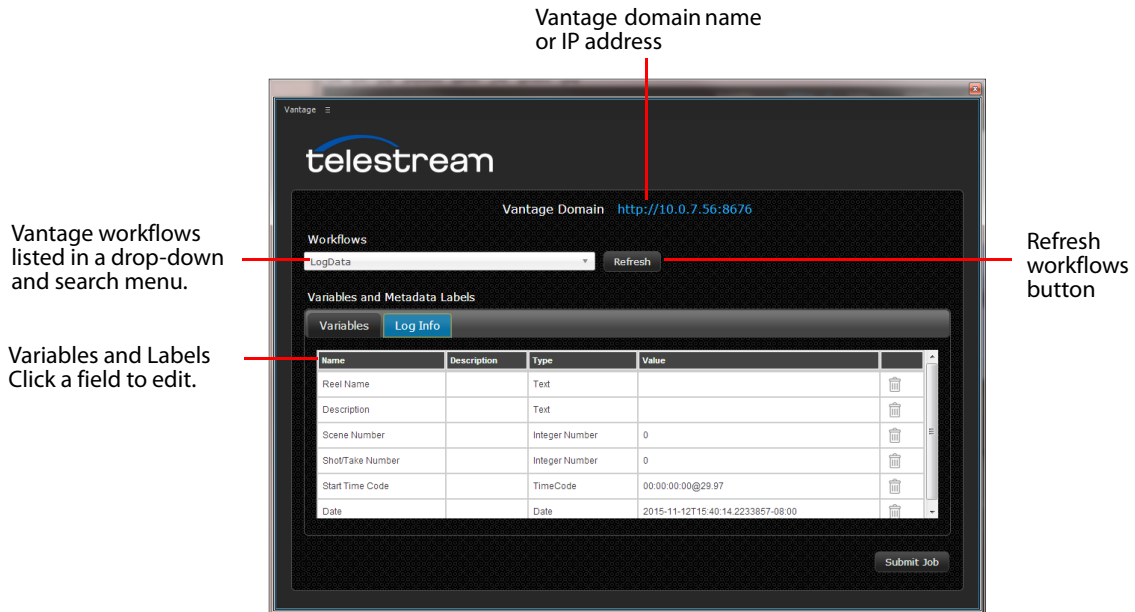
Correct: "exportPathAlias": "\\\\"\\\\\\\\\\\\\\\\qa-computer\\\\\\\\Share",

Using the Vantage Panel

Connecting to Vantage

When the Vantage Panel is launched from within Premiere Pro CC, it automatically connects to the Vantage domain specified in the Panel's configuration file and populates the *Workflows* menu with all available Vantage workflows. To refresh the list of Vantage workflows contained in the *Workflows* menu, select the *Refresh* button.

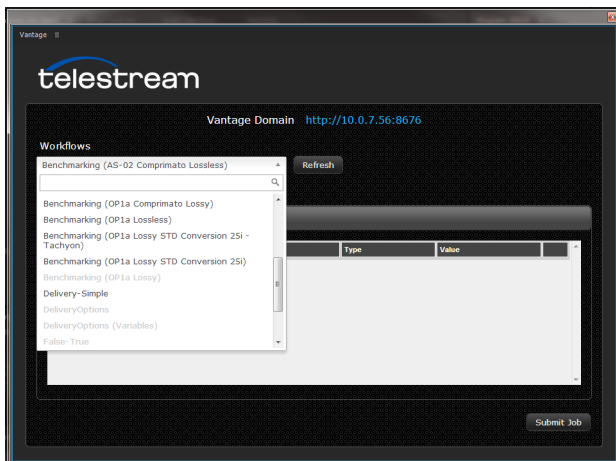
Vantage Panel



Workflows menu

The Workflows drop-down menu displays all Active workflows (those in an Active ready state) in black text. Workflows that are in an Inactive state (unable to accept jobs) are displayed in gray text.

Workflows Menu



Variables and Metadata Labels

When a workflow is selected, the Panel displays any associated metadata variables (with their default values) in the Panel's Variables and Metadata Labels section. You can change values by single-clicking a field and entering a new value within the Edit box.

Edit Box



Submitting a Job

Follow these steps to submit a sequence to Vantage:

1. Open the Vantage Panel in Adobe Premiere Pro by selecting *Windows > Extensions > Vantage*.
2. The Workflows tab is open by default when you open the panel. If not, select it.
3. Use the *Workflows* drop-down menu to view and select from the Active workflows, or type in the name of the workflow to display a filtered list.
4. In the Variables section, enter variable values that you want to pass to the selected Vantage workflow.
5. When all parameters have been entered, click the *Submit Job* button.

Adobe Media Encoder will flatten the sequence using the predefined Media Encoder preset, writing the flattened file to a network location accessible to Vantage. The file is then submitted to Vantage for processing by the selected workflow using the variable and metadata label values you specified.

Note: If a sequence is deleted while the AME task is running, the job will not be submitted to Vantage. To avoid this issue, do not delete a sequence until the AME task is complete.

6. You can view the status of your job using any installed Vantage web or client application. See the *Vantage User's Guide* for details about job status views (<http://www.telestream.net/pdfs/user-guides/Vantage-UserGuides/Vantage-User-Guide.pdf>).

Example Vantage Workflow

Before you can use Adobe Premiere Pro and Vantage together, you need to create Vantage workflows that accomplish what you want done with the source files prior to submitting them to Adobe Media Encoder. The following simple workflow example includes a Populate action that allows specifying variables and labels for adding to the source file. These are the key features of a workflow used with Adobe Premiere Pro and Vantage Panel:

1. Start with an origin action, such as Receive, that receives the source file from Adobe Premiere Pro and applies the Original nickname to the file.
2. Include additional actions, such as the Populate and Flip actions shown. These actions are optional according to your requirements.
3. The variables and metadata labels you added via the Vantage Panel can be bound as needed to parameters in the actions for inclusion in the output file.

For more information on Vantage workflow creation, see the *Vantage Workflow Designer Tours* section in the *Vantage User Guide* (<http://www.telestream.net/pdfs/user-guides/Vantage-UserGuides/Vantage-User-Guide.pdf>).

Example Vantage Workflow

The image illustrates the configuration of a 'Populate' action in a Vantage workflow. It consists of a workflow diagram and three screenshots of the 'Populate: Test Variables' dialog box.

Workflow Diagram: A 'Receive' action (with 'Original' label and 'Manual Submit' button) branches into two paths: one leading to a 'Flip' action (with 'Original' and 'Vantage P.2' labels and 'Test Media File Access' parameter) and another leading to a 'Populate' action (with 'Original' and 'Premiere L...' labels and 'Test Variables' parameter).

Dialog Box 1: Select what to do:

Name	Description
Item From File	Create a media version or attachment from...
Label From Variable(s)	Add a label using one or more variables as...
Variable From Attachment	Add a text variable to the job, from the con...
Variable From Entire Label	Add a text variable to the job, from an entir...
Variables From Label Parameters	Add variables to the job, from parameters...
Variables From System Information	Add variables to the job, from system infor...

Dialog Box 2: Select labels:

Select labels:
 Premiere Label

Bind parameter values to desired variables using the green buttons. Uncheck any parameters whose value should not be changed when the action is updating an existing label.

Parameter	Value Type	Value
<input checked="" type="checkbox"/> True/False	True/False	<input type="checkbox"/> (False)
<input checked="" type="checkbox"/> Integer Number	Integer Number	0
<input checked="" type="checkbox"/> Size	Size	0
<input checked="" type="checkbox"/> Decimal Number	Decimal Number	0

Dialog Box 3: Completion:

Populate action configuration is complete. Press Finish to save your changes.

Buttons: Cancel, < Previous, Finish

Removing the Vantage Panel

If you want to remove the Vantage Panel add-on, follow these steps:

1. Open the Adobe Premiere Pro CC application.
2. From the *Window* menu, select *Browse Add-Ons* from the drop-down menu. Adobe's Creative Cloud Add-ons web page opens in your default browser.
3. From Adobe's Creative Cloud Add-ons web page, locate *My Add-Ons*, and select *All your purchases and shared items* (shown at right).
All add-ons currently installed or acquired will appear.
4. Select *Remove* from the Vantage listing.
The Vantage Panel is removed from Adobe Premiere Pro CC.

My Add-ons

[All your purchases and shared items](#)

Copyright and Trademark Notice

© 2016 Telestream®, LLC. All rights reserved. No part of this publication may be reproduced, transmitted, transcribed, altered, or translated into any languages without written permission of Telestream, Inc. Information and specifications in this document are subject to change without notice and do not represent a commitment on the part of Telestream.

Telestream, CaptionMaker, Episode, Flip4Mac, FlipFactory, Flip Player, Lightspeed, ScreenFlow, Switch, Vantage, Wirecast, GraphicsFactory, MetaFlip, and Split-and-Stitch are registered trademarks and Gameshow, MacCaption, e-Captioning, Pipeline, Post Producer, Tempo, TrafficManager, and VOD Producer are trademarks of Telestream, LLC. All other trademarks are the property of their respective owners.