



USING AVID v2.3 TRANSFER MANAGER/ENGINE WITH VANTAGE

Synopsis	2
Installing Avid Interplay TransferManager Components	3
Installing Interplay TransferManager Components	3
Copying the DLL to Interplay TransferManager Server	8
TransferManager Server Configuration	9
Multiple Server Configuration	10
Sharing the Default Vantage Store Folder	10
Updating the Vantage License	11
Creating a Workflow with Interplay TransferManager Deployment	12
Copyright and Trademark Notice	16



Synopsis

Vantage provides an Avid Transfer Manager/Engine encoder and an Avid Transfer Manager/Engine deployment. The encoder and deployment work together to enable Vantage workflows to automatically submit transcoded media to Avid workspaces for ingest via Avid's Interplay Transfer Manager.

The following operating systems are supported for this version of the Vantage Interplay Components:

- XP Pro SP3 32-bit
- Server 2003 R2 32-bit
- Server 2003 R2 64-bit
- Server 2008 SP2 32-bit
- Server 2008 R2 64-bit

Vantage v3.0 is compatible with Avid Interplay v2.3 via Transfer Engine and the following formats are supported:

- DV25
- DVCPRO25, DVCPRO50, and DVCPROHD
- IMX30, IMX40, and IMX50
- XDCAM HD 4:2:0 and XDCAM HD 4:2:2
- DNxHD
- AVC-Intra (for Avid versions 2.2.1 and later)

Project	Edit Rate	MB/Sec
1080i	25	50MBit
1080i	25	100MBit
1080i	29.97	50MBit
1080i	29.97	100MBit
720p	5994	50MBit
720p	5994	100MBit
720p	50	50MBit
720p	50	100MBit

Note: Before configuring a Vantage workflow to implement automated Avid ingest workflows via Interplay TransferManager, Avid Interplay Transfer Client V2.3 (obtained from Avid) must be installed on the Vantage server. Additionally, the updated Vantage Interplay TransferManager components (obtained from Telestream) must also be installed.

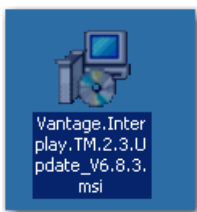
Installing Avid Interplay TransferManager Components

Note: Before installing the Vantage Avid Interplay TransferManager Components, you must obtain and install Avid Interplay TransferManager Client.

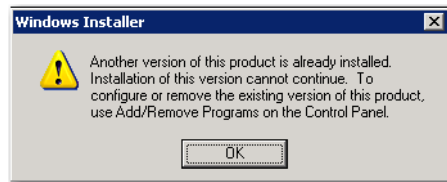
Installing Interplay TransferManager Components

To obtain the Vantage TransferManager Components installer, purchase a license from Telestream, download the installer from the Web site (<http://dynamic.telestream.net/downloads/downloads.asp>), and use the instructions sent via E-mail from Telestream.

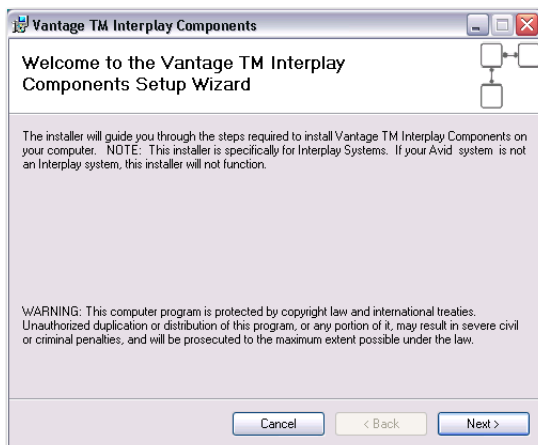
1. To begin installation, double-click the *Vantage.Interplay.TM.2.3.Update_V6.8.3.msi* icon:



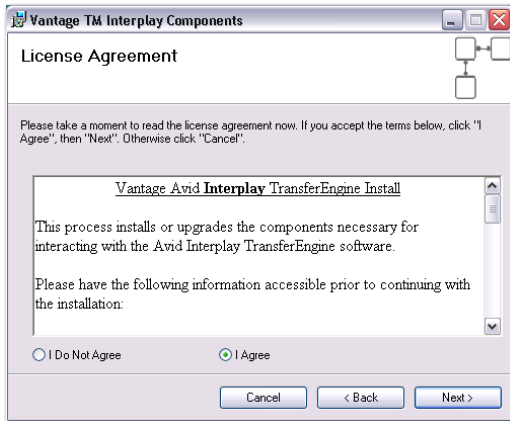
Note: If the installer displays the following window, the Avid Interplay TransferManager client has not been installed. Install the appropriate version of the Avid Interplay TransferManager Client and continue.



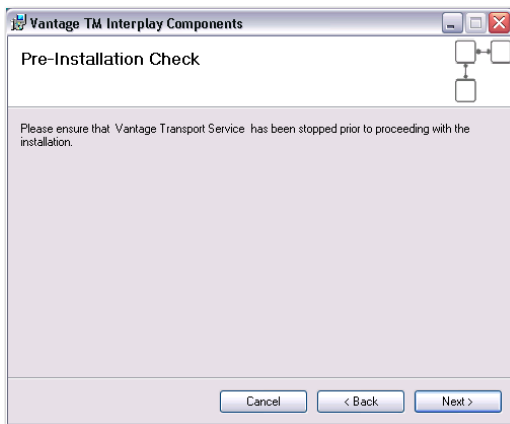
2. When the installer Welcome window displays, click Next:



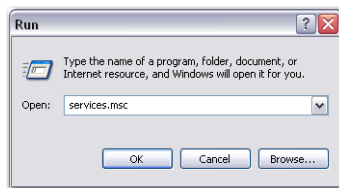
3. The License Agreement contains important information that should be read. Select Agree to acknowledge your agreement. Click Next to continue:



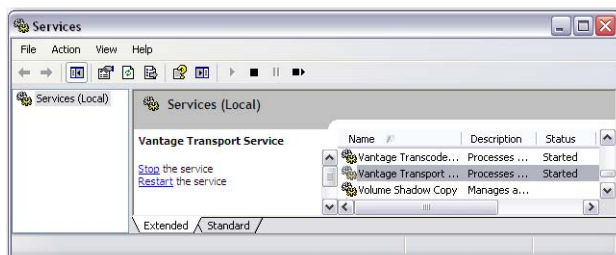
4. When the Pre-Install Check window displays, make sure the Vantage Transport Service is stopped. Click Next to continue:



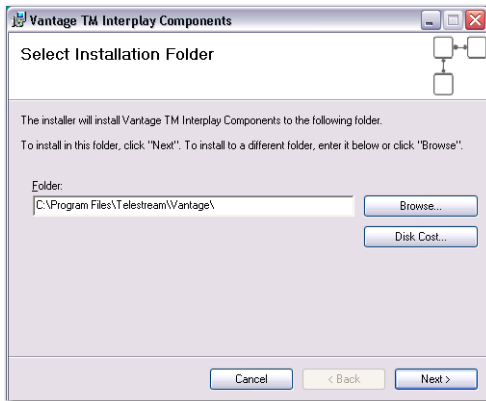
Note: To stop the Vantage Transport Service, select Start->Run from the PC desktop, then enter *services.msc* and click OK:



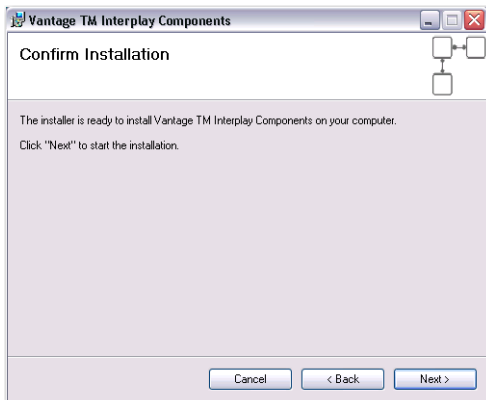
Locate Vantage Transport and click Stop:



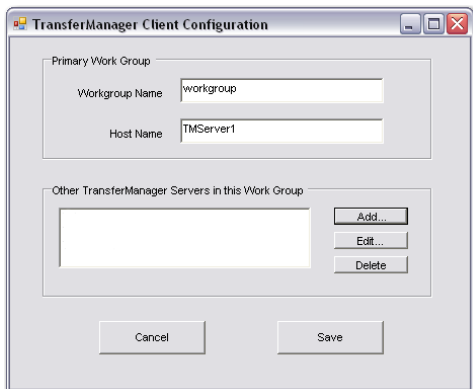
5. Click Browse to select a target installation folder. Select the path where Vantage software is installed. By default, the path is pre-populated to the default Vantage location. If you installed Vantage at a different location, browse and select the correct directory. Click Next to continue:



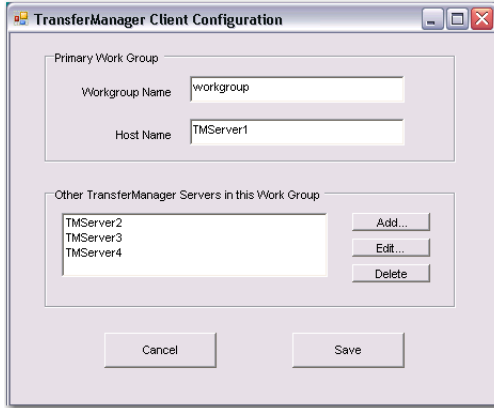
6. When the Confirm window displays, click Next:



7. When the TransferManager Client Configuration window displays, provide the following information to configure Interplay TransferManager:
Workgroup Name. Enter domain or workgroup name of the TransferManager server location.
Host Name. Enter the computer name where the TransferManager server is running.



Note: If multiple servers will be used, **Other TransferManager Servers** must be set up. Use the **Add**, **Edit**, and **Delete** buttons to list all other TransferManager Servers that will be used:

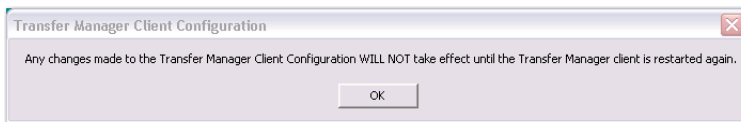


Note: Since Other Servers (i.e. TMServer2) get licensing information from the Primary Server (i.e. TMServer1), the Primary Server must be turned on and locatable on the network.

If you do not have this information, or you are unfamiliar with this terminology, consult your Avid TransferManager Server Administrator. These fields must be completed correctly, prior to continuing with the installation.

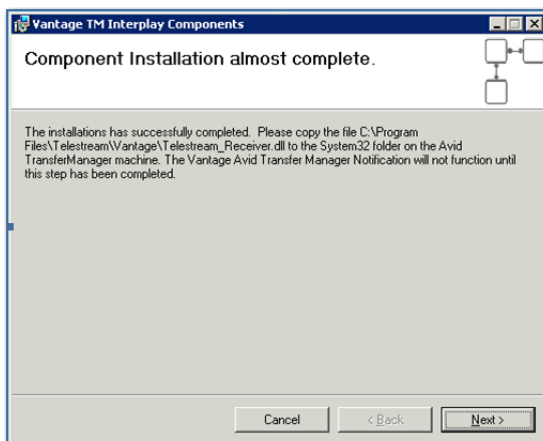
If you add server names to the list of Other TM Servers, make sure they are turned on. Doing this prevents the workflow from slowing down while searching for those servers.

- When the Transfer Manager Client Configuration window displays, click OK.



Note: This window is an artifact of the Avid software. There is nothing to restart, and this message can be ignored.

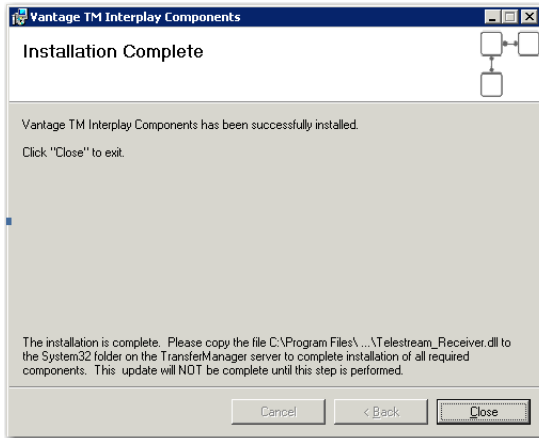
- When the Vantage TM Interplay Components window displays, read the instructions to copy a file to the Interplay Transfer Manager server, then click Next:



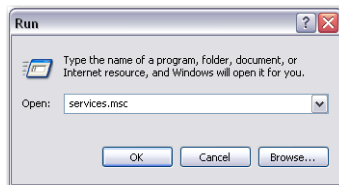
Note: The transfer of the Telestream_Receiver.dll file must be done on the first installation of the TM Components. If you have several Vantage installations, this step need only be done once per TransferManager Server. As long as the latest version of the DLL file is moved on

to each server the first time, this step can be skipped on other installations of the same software version. If you are running more than one TransferManager server, this file MUST be copied to all the servers that you are using in your network.

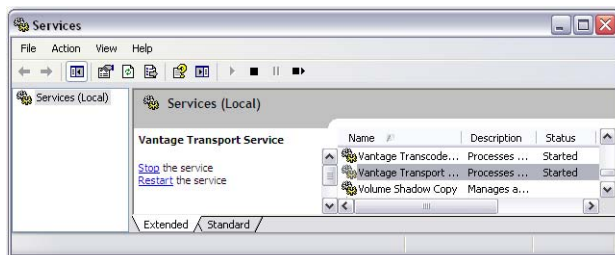
10. Click Close to quit the installer:



11. To start the Vantage Transport Service select Start->Run from the PC desktop, then enter `services.msc` and click OK:



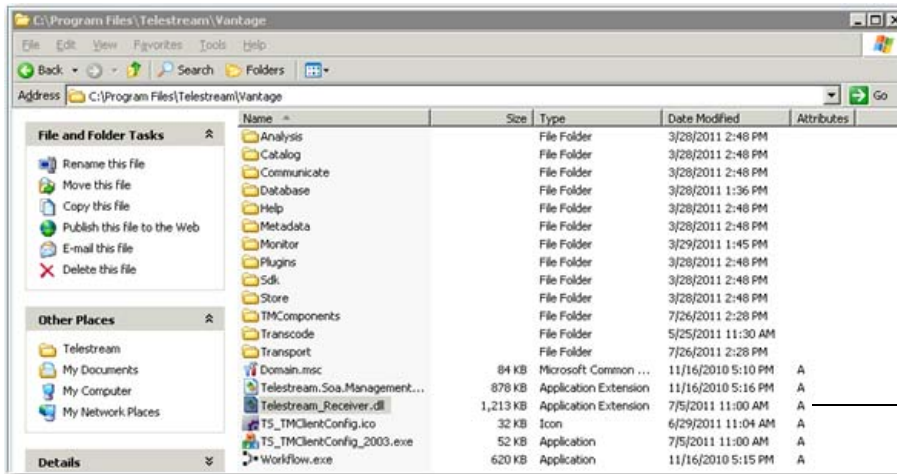
12. Locate Vantage Transport and click Restart:



Copying the DLL to Interplay TransferManager Server

After the installer quits, you must copy a DLL file to the Interplay TransferManager server before you can deliver any media.

1. In Windows Explorer, browse to the Vantage installation folder (default: *C:\Program Files\Telestream\Vantage*) and locate the file named *Telestream_Receiver.dll*, and copy it in preparation for pasting it into the *Windows\System32* folder on the Interplay TransferManager server:



2. In Windows Explorer, open My Network Places and browse to the Interplay TransferManager server, and open the *Windows\System32* folder. Paste the *Telestream_Receiver.dll* file into the System32 folder:



TransferManager Server Configuration

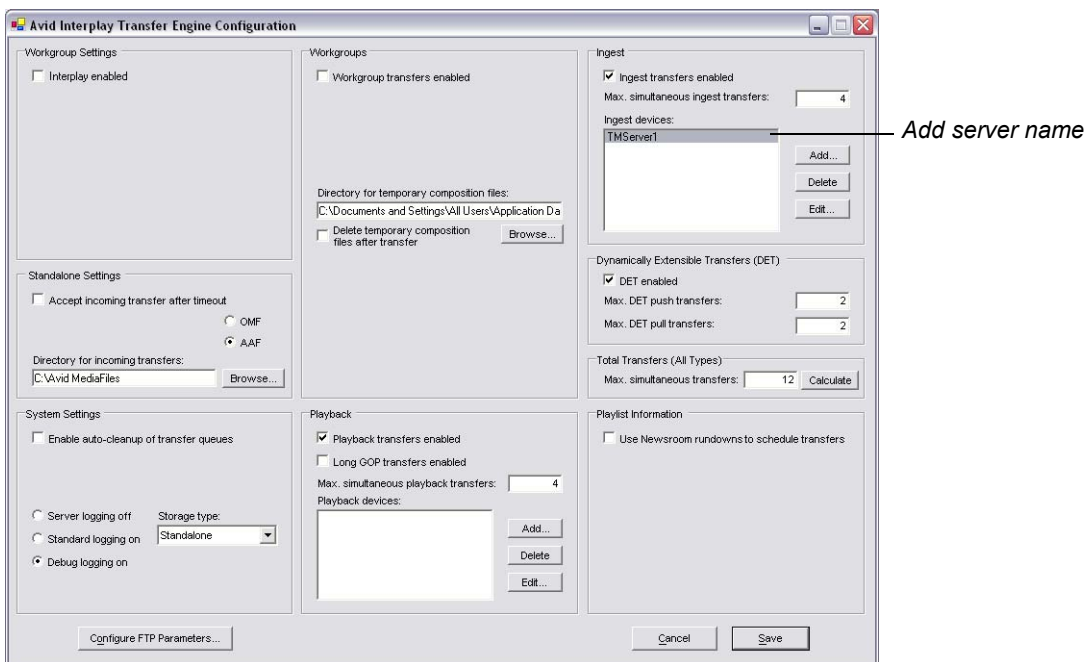
The following steps must be performed for each TransferManager used.

After you have transferred the *Telestream_Receiver.dll* to your primary TransferManager, and all other TransferManagers used with this installation, the TransferManager configuration must be edited. On each TransferManager server, there is an icon on the desktop to run the Avid Configuration utility:

1. Double-click the TransferManager Configuration icon:



2. In the Ingest devices edit box, add the name of the TM Server:

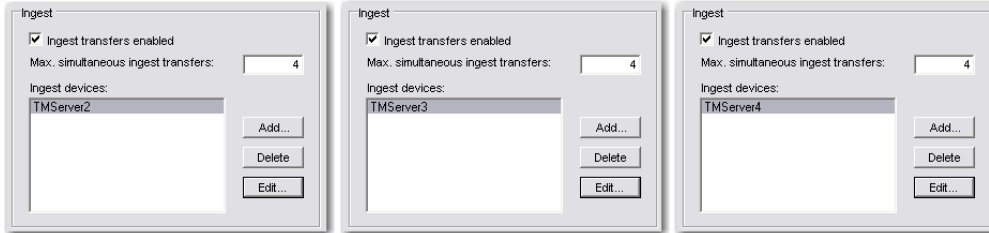


Note: In this example, the TM server is named *TMServer1*. This is the same machine name that was used in the installation of the TM components above. In a multi-TransferManager environment, there may be several TransferManager servers and several Vantage machines. The primary Avid Transfer Manager Server must be running in order for any secondary servers to work. If the primary is not enabled then transfers will fail.

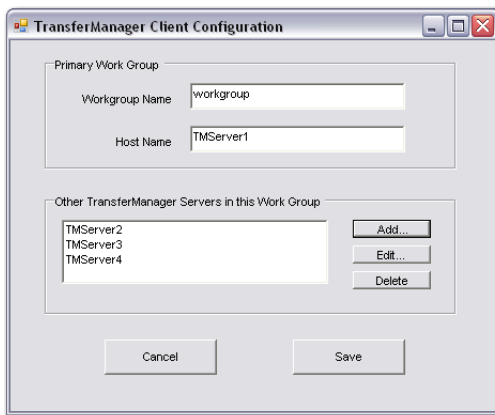
Multiple Server Configuration

If multiple servers are used, the playback devices should be configured by following these steps:

1. Each of the secondary servers must also have their respective names set in their own TransferManager Configuration (TM Servers 2, 3 and 4):



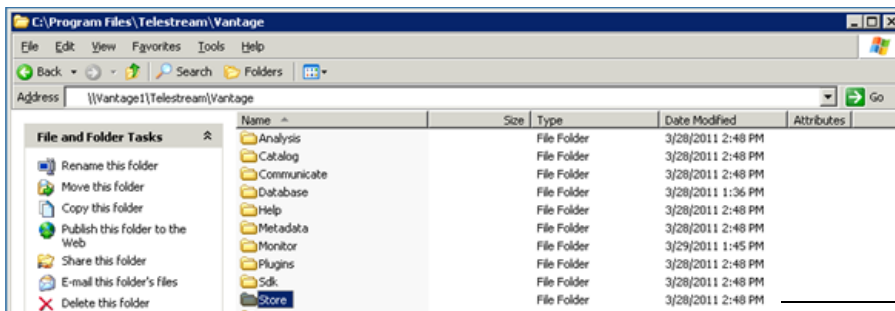
2. Each of the Vantage installations require the TransferManager Client Configuration to be set as displayed below.



Sharing the Default Vantage Store Folder

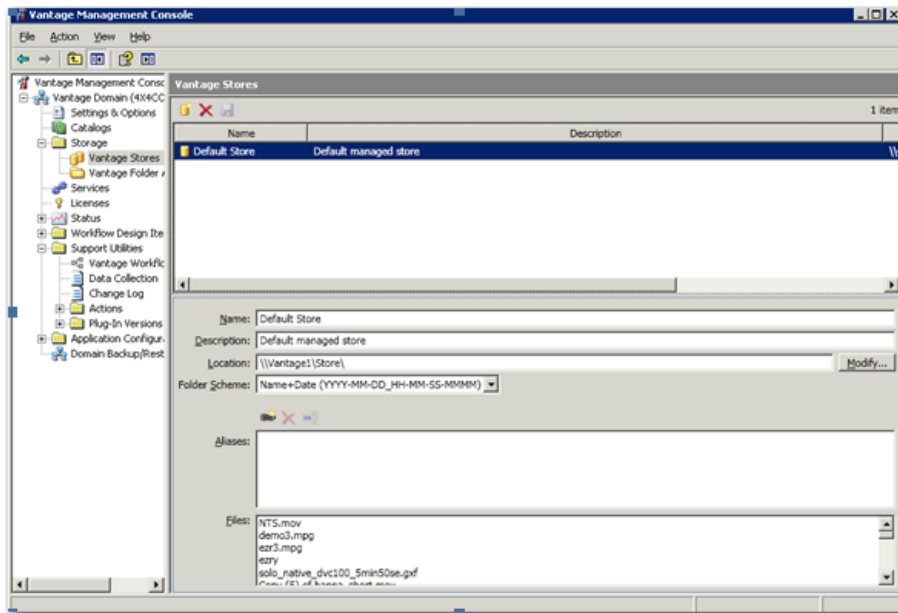
The Vantage store is where temporary media files are located; it must be shared and given permissions so that all necessary servers (specifically, your Interplay TransferManager server) can read and write to the share. The share should be configured so that it is accessible from the UNC reference (`\\VantageServerName\Store`). For example, on a server named Vantage1, the default store folder should be accessible as `\\Vantage1\Store` from the Avid Interplay TransferManager server.

Note: *When you do an encode, the files are placed in a temporary store by default. You can deploy directly from this store or any other location where the files have been moved, as long as the Interplay Transfer Manager server can access that location.*



Share Store directory

After sharing the store, the Management Console must reference the store via its new UNC path:



Updating the Vantage License

Two license features must be present in the license file in the Vantage database: *TransferManager Encoder* and *Avid TransferManager Deployment*. Without these two license features, the encoder and/or the deployment will not operate. Instructions for updating your license file are provided by Telestream via E-mail.

Creating a Workflow with Interplay TransferManager Deployment

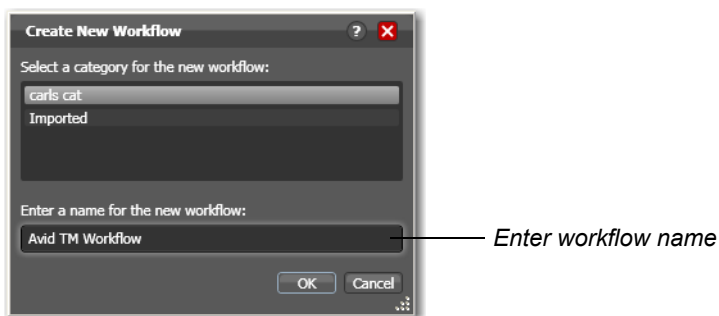
To use Interplay TransferManager Deploy, you should create a workflow in Vantage that:

- Transcodes media into the appropriate format
- Enables Interplay TransferManager Deploy (which must be configured appropriately for your workflow).

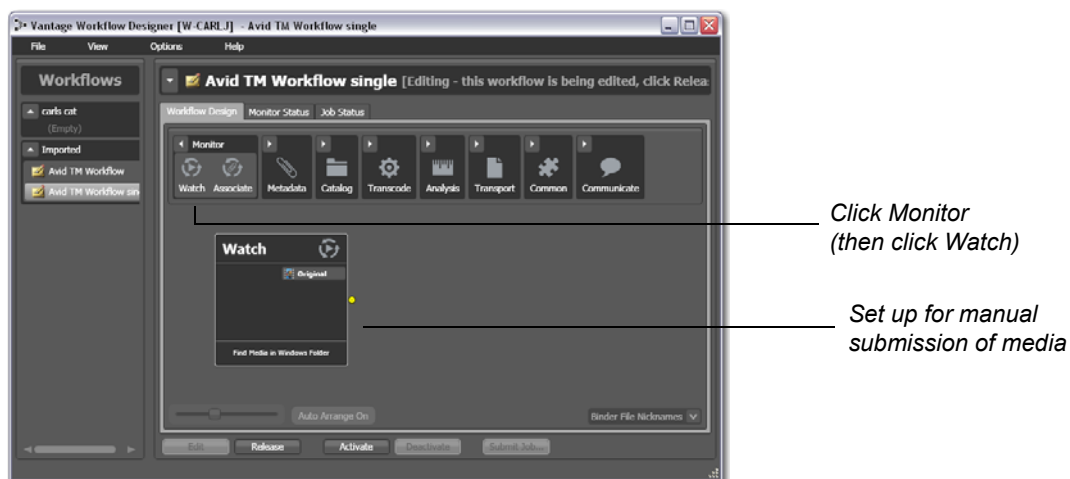
Note: This document assumes that you know how to create workflows: enable and configure monitors, products (encoders), and deployments. If you need help, consult the Vantage User's Guide.

The following steps describe generally how to create a sample workflow that transcodes media destined for an Avid system and utilizes Interplay TransferManager Deploy that you can use as an example.

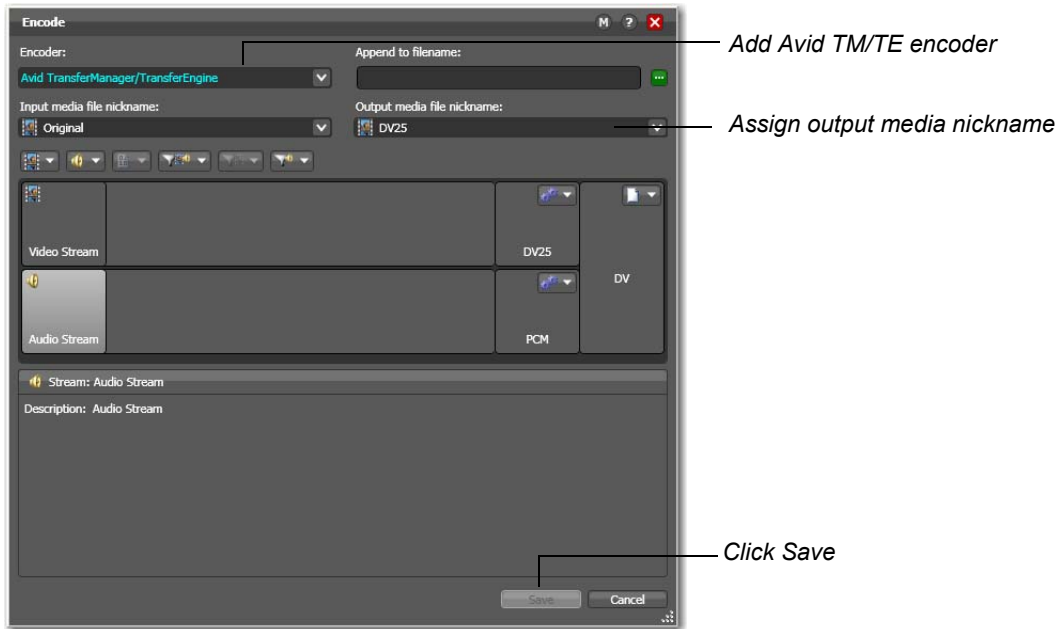
1. To create a new workflow, start Vantage Workflow Designer and select File -> Create New Workflow. Enter a workflow name:



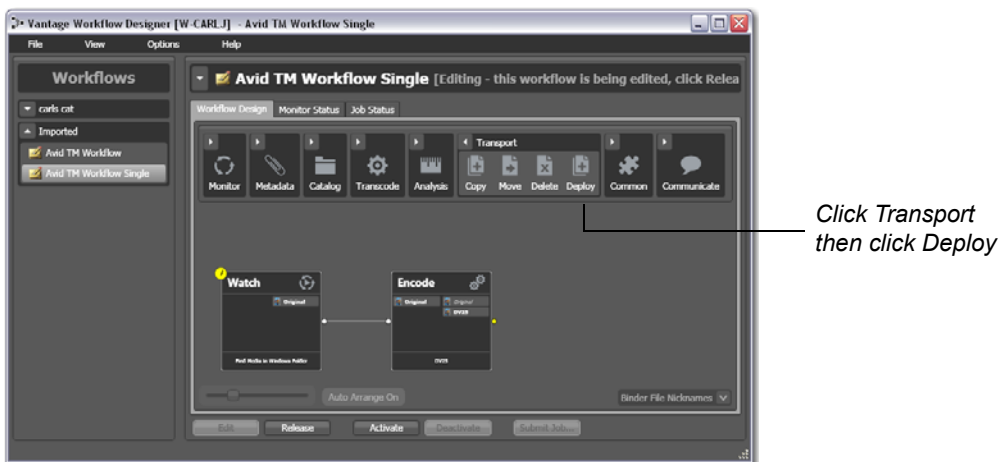
2. Click Monitor, click Watch, then set up a monitor to enable manual submission of source media:



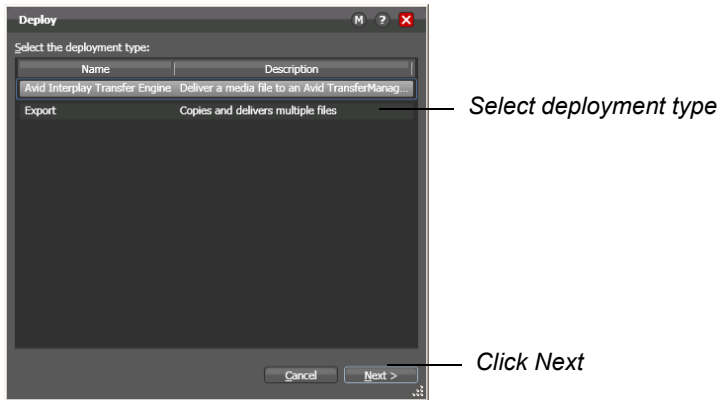
3. Click Transcode, then click Encode to add the Avid TM/TE encoder. This encodes media compatible with Avid TransferManager. Assign an output media file nickname and click Save:



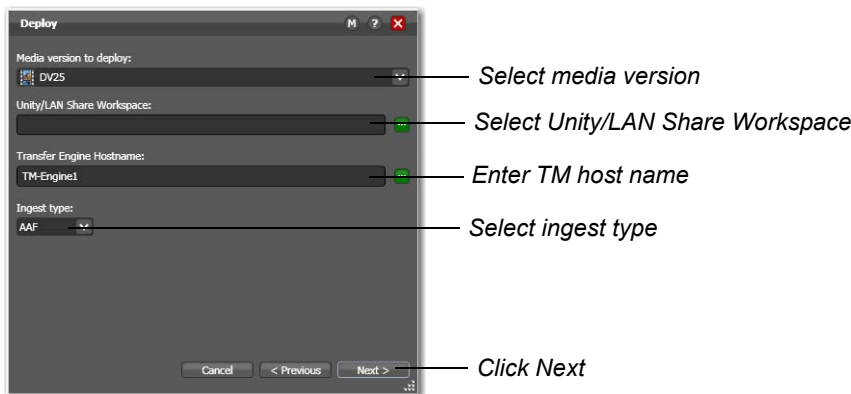
4. Click Transport, then click Deploy to setup deployment:



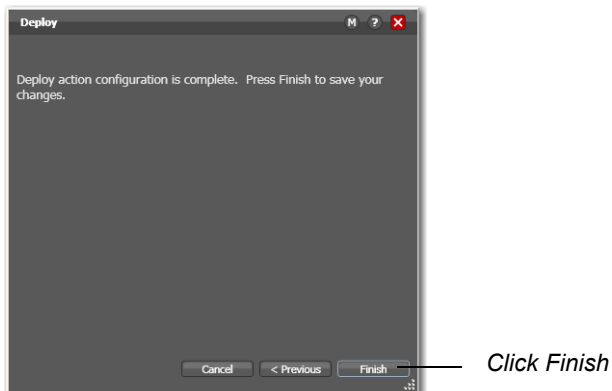
5. Open the Deploy action and select a deployment type, then click Next:



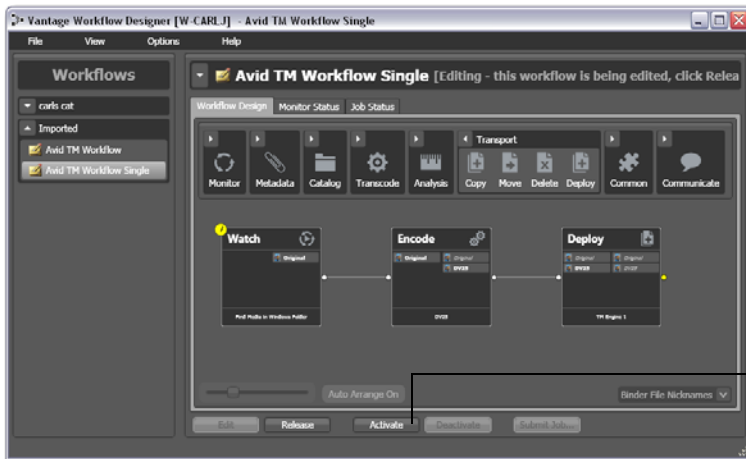
6. Select media version and enter the name of the Workspace on the Unity/LANshare. Select a Transfer Engine host (when blank, the default workspace is the target). Select the ingest type from the drop-down menu. The ingest type must correspond with the work environment of your editors. If you are using an OMF editor, select OMF. If you are using an MXF/AAF editor, select AAF. Specifying the wrong ingest type will result in an ingest failure or uneditable material on Avid workstation. Click Next when finished:



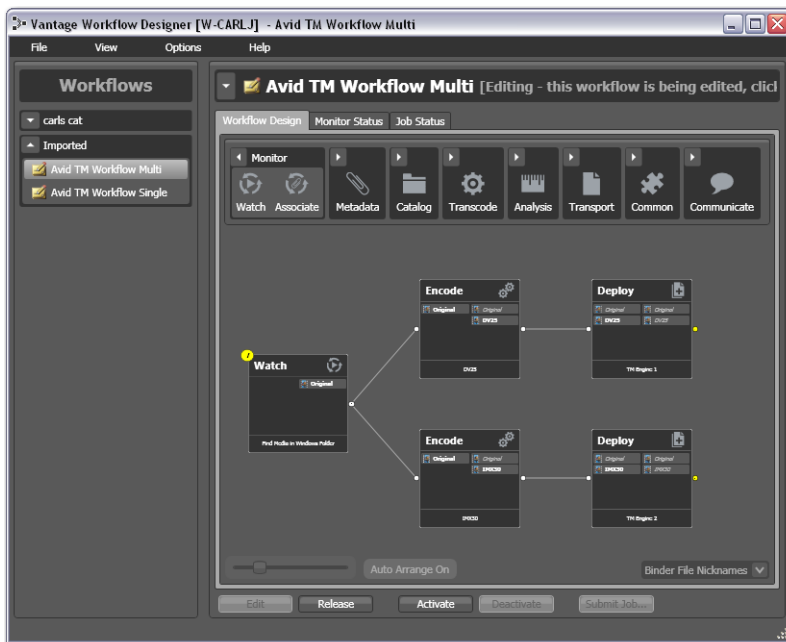
7. Click Finish to close deployment setup:



8. Click Activate to start the workflow:



Note: A multiple server workflow can be created by adding a second set of encoder and deployment stages:



Copyright and Trademark Notice

©2011 Telestream, Inc. All rights reserved. No part of this publication may be reproduced, transmitted, transcribed, altered, or translated into any languages without written permission of Telestream, Inc. Information and specifications in this document are subject to change without notice and do not represent a commitment on the part of Telestream.

Telestream, Flip4Mac, FlipFactory, Vantage, Episode, ScreenFlow, Wirecast, GraphicsFactory, MetaFlip, MotionResolve, and Split-and-Stitch are registered trademarks and Vantage, Pipeline, Launch, and Videocue are trademarks of Telestream, Inc. All other trademarks are the property of their respective owners.