

# Streamline Your VOD Production

with the world's most powerful transcoding and video workflow solution



**Telestream Vantage™** accelerates the production of VOD assets in today's multi-platform, multi-language video environments. Ingest media from SDI or file sources and then automatically detect commercial breaks, analyze loudness, and inject metadata from external sources. Easy-to-use operator interface allows the choice of distribution channels, application of branding and commercials, and review or entry of VOD metadata. Transcode, apply DVB or open subtitles, insert language audio tracks and track delivery to multiple distribution channels, all managed by enterprise-class Vantage server software.

### Save time, effort and money

Vantage eliminates tedious manual transcoding, tying up edit bays, XML file editors and graphics application just to get your media to the distribution channels. Streamlined processes allow metadata re-use, automatic media and metadata repurposing for multiple channels, and managed delivery to ensure that media are delivered as quickly and easily as possible.

### Customize Branding for Distribution Channels

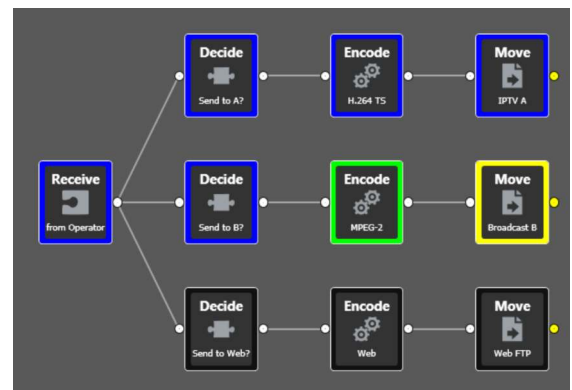
Vantage automates branding and commercial insertion. Set up automated branding workflows for consistent, high-quality results. Automatically detect and remove black commercial breaks, and insert bumpers, trailers, logos or new commercials. Branding rules can be customized for each distribution channel, and all can be driven from a simple operator user interface.

### Managed Asset Conversion and Delivery

Vantage converts from virtually any ingest or archive format into your web, mobile, and H.264/MPEG-2 VOD output formats. Exclusive MotionResolve® technology upconverts SD interlaced content to

superior quality 1080i and 720p HD output, and provides superior standards conversion. With ongoing support for evolving formats, you can rest assured that you'll have a content repurposing solution that you won't outgrow.

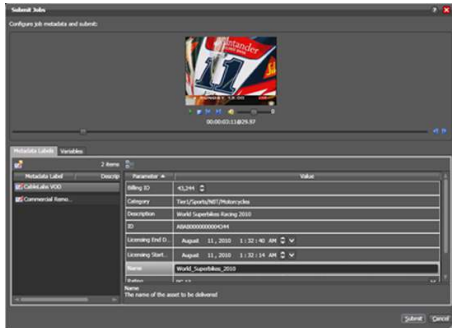
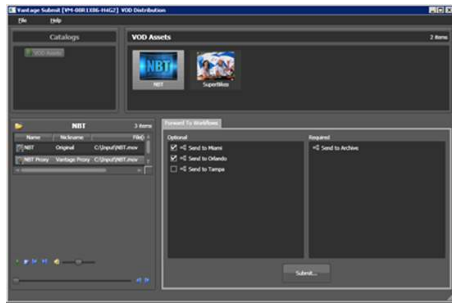
Track asset delivery in Vantage's unique Job Status view, which gives a visual representation of each workflow. Failed deliveries can be restarted without requiring that the job be completely restarted. Administrators can view global status in a dashboard view, seeing all failures and active jobs at a glance.



### Easy-to-Use Operator Interface

Operators can use the Vantage Workflow Portal client application to access the Vantage database from their desktop. Browsing for assets, choosing distribution channels, applying branding and commercials, reviewing black removal points, and entering metadata is all performed in a single, unified user interface.





Vantage Workflow Portal

Vantage Workflow Portal also allows administrators to streamline their operator experience. Highly customizable user interface and data modeling allows administrators to customize data entry and workflow user interface, so that operators can perform their jobs efficiently and with fewer errors.

## Configuring This Workflow

### Recommended Configuration

To accomplish the workflow above, Telestream recommends the following product configuration:

**Vantage Transcode Pro Connect** which includes full HD support for decoding and encoding virtually any file format.

**Vantage Analysis** for black detection and ITU.1770 loudness analysis.

**GraphicsFactory**® for branding, commercial insertion, and multiple audio language track insertion.

**2-channel SDI HD Capture** through Telestream Pipeline™.

**5 seats** of Vantage Workflow Portal for asset browsing, data entry, forwarding, etc.

### Formats and Wrappers

See the extensive list on the Vantage format sheet (also available on our website).

### Video, Audio and Graphics Processing

**Video:** Blur, Color Rescale, Contrast, Crop, Darken Region, Field Order Conversion, Frame Mode, Gamma Correction, Hue, Inverse Telecine, Keyframe Extraction, Mask, MotionResolve®, Noise Reduction, Standards Conversion, Overlay, Saturation, Sharpen, Source Video Timing, Telecine, Temporal Interpolation, Time Code burn in, Trimming, Up/Down Conversion, Video Fade In/Out

**Audio:** Channel Mixing, Fade Up/Down, Normalization, Phase Invert, Up/Down Sampling, Mix external audio files

**Graphics:** Text, QuickTime or image single overlay (no timeline), Bumpers, Trailers

### Enhance your Workflow

Vantage automatically detects black segments, and can analyze and detect loudness. Vantage combined with Telestream Pipeline™ allows the SD/HD ingest of media from tape or live sources. Additional channels can be added with minimal power consumption and rack space requirements.

Vantage Analysis allows you to incorporate quality control steps at any point in the workflow, testing for both source and output video quality, and allowing operators to review errors.

In addition to VOD formats, Vantage Transcode Pro allows the creation of virtually any file format, including edit, broadcast server and MXF formats.

### Scalable, enterprise-class server software

Vantage performs video encoding and analysis on your favorite Windows 2003 or 2008 server. Optimized for server architectures, Vantage ensures high throughput of video files. Automatic pause-and-resume transcoding capability ensures that high priority media is processed as quickly as possible. Adding Vantage Array™ allows for full scalability, load-balancing and redundancy, giving you 24/7 reliability and auto-failover. Processing can take place on one or multiple load-balanced servers providing high-volume processing to meet your exact media workflow needs.

### Best in class customer support

You can rest assured that our highly-skilled technical team will be available to provide the quick and comprehensive support and guidance you need to fully leverage the power of your Telestream product.

### Additional Features

#### Included in above configuration

Closed Captioning Synthesis from source or SCC file	Media Expansion
Conform	Bumpers and Trailers
HD VANC support	Time Code Burn-in
Keyframe Extraction	Avid TransferManager delivery
	GraphicsFactory

#### Optional

Dolby E decode/passthrough
IPV SpectreView
Screen Subtitling option for DVB or Open subtitles

### System Configuration Requirements

Operating System: Windows Server 2003, 2008, XP Pro SP3
Minimum Server: Dual, Quad-Core Processors, 4GB Memory
High-Speed Storage RAID Storage or SAN Recommended
GigE Ethernet adapter
Database: SQL 2005 Express, Standard or Enterprise
Client OSs: XP SP3, Vista, Windows 7, Server 2003, 2008

Specifications subject to change without notice. Copyright © 2010 Telestream, Inc. Telestream is a registered trademark and Vantage is a trademark of Telestream, Inc. All other trademarks are property of their respective owners.

September 2010