

Multiformat, Multistandard CompactRasterizer

WVR5200 Datasheet



Features & Benefits

- 1RU height, Half-rack Width, Short-depth (5.5 in. or 14 cm) Instrument, Ideal for Space-constrained Environments
- 4-pin XLR DC Power Input with AC Power Adapter for both AC/DC Operation
- Four SDI Inputs with Multiformat, Multistandard Support
 - WVR5200 comes standard with auto-detection of HD/SD-SDI and multiple Dual Link video formats
 - Multiple Input Mode allows monitoring of up to four SDI inputs simultaneously for multiple camera monitoring applications (Option CAM)
 - Two-channel Simultaneous Monitoring (Option CAM)
 - Upgradeable to include 3G-SDI (Level A and Level B) format support with the purchase of an upgrade key (Option 3G)
 - 16-channel embedded AES/EBU audio simultaneous monitoring support with Multichannel Surround Sound¹ display and flexible Lissajous display (Option AUD)
 - Audio Loudness monitoring to ITU-R BS.1770-3/1771, EBU R 128, and ATSC A/85 recommendations (Option AUD and LOUD required)
- Telestream-patented Diamond and Arrowhead Displays for Color Gamut Compliance Monitoring
- Patented Spearhead Display and Luma Qualified Vector (LQV™) Display Facilitate Precise Color Adjustment for Post Production Applications (Option PROD)
- Stereoscopic 3D Video Displays for Camera Alignment and Production/Post-production Applications (Option S3D)
- Comprehensive Data Monitoring (Option DATA) helps to Quickly Resolve Difficult Content Quality and Reliability Issues
- Simultaneous CEA708/608 Closed Caption monitoring; Teletext and OP47 subtitle monitoring
- Detect and decode ANC data including AFD, WSS, Video Index, TSID, V-Chip, Broadcast Flag/CGMS-A, VITC, LTC, and ANC TC
- ARIB STD-B35/B37/B39, TR-B22, and TR-B23 support
- ANC Data Inspector and SDI Data Analysis display helps troubleshoot ANC data and SDI data problems
- Simple 3G/HD/SD Color Bar and Pathological Signal Generator (Option GEN) for Troubleshooting Signal Paths and Equipment (Note: Option 3G is required for 3G-SDI test signal generation)
- Variety of Monitoring Displays
 - Patented Timing and Lightning displays makes facility and interchannel timing easy
 - Waveform display of external reference (Black Burst or Tri-Level Sync)
 - Black Picture and patented Frozen Picture Detection Extensive alarms, status reporting, and error logging for 10,000 events simplifies error correction tasks
 - Voltage and Timing Cursor for precise measurement
 - User-definable Safe Area Graticules and AFD Graticule facilitate editing and format conversion tasks
- Unmatched Display Versatility
 - Flexible Quad Tile Display tailored to various applications needs to increase productivity
 - TandemVu® Display for efficient camera adjustments of luma and chroma
 - Full Screen mode that maximizes display size for precise adjustments
- Unmatched Usability
 - 32 instrument presets for quick recall of commonly used configurations tailored to colorists, editors, or operators
 - Front-panel USB port enables easy transfer of presets, screenshots, and error log
 - Front-panel headphone port for easy monitoring of audio channels
 - Intuitive menu structure and context-sensitive help
 - SNMP and Ethernet remote interface capabilities and GPI control facilitate centralized monitoring and control
 - DVI-I external display output for easy connection to digital or analog XGA display
 - Super lightweight and low power consumption design for mobile truck (OB van) applications

¹ Audio Surround Sound Display licensed from Radio Technische Werksütten GmbH and Co. KG (RTW).



WVR5200 Compact Monitoring ideal for edit suite applications.

Applications

- Camera Monitoring (Camera Shading) in Mobile Trucks (OB Vans) and Production Studio Control Rooms
- Color Correction and Manipulation
- Content Editing and Special Effects
- Content Quality Control (QC) in Production and Post Production
- Field Production Setup and Troubleshooting
- Compliance Checking in Distribution and Broadcast

WVR5200

The WVR5200 Compact Video Waveform Rasterizer provides an ideal solution for basic video and audio (with Option AUD) monitoring needs in a convenient 1RU, half-rack, short-depth form factor, suitable for space-constrained environments. This versatile instrument can accept power from a 12 V DC source, a battery, or a 100-240 V AC converter.

Standard configuration provides multiformat support for HD-SDI (SMPTE 292), SD-SDI (ITU-R BT.601) and Dual Link (SMPTE 372) signal formats. The instrument provides automatic format detection for 3G/HD/SD-SDI on each of the four inputs. Option 3G is required for support of Level A and Level B SMPTE 425/424 formats.

Optional audio monitoring support for 16 channels of Embedded AES/EBU Audio (Option AUD) provides a variety of audio level bar monitoring, multichannel surround sound display¹ and flexible Lissajous display. A front-panel headphone port can be used for easy compliance verification of digital audio without the need for an additional piece of equipment.



WVR5200 Compliance Checking in Distribution or Broadcast applications.

This instrument provides the reliability of the Telestream waveform rasterizers family in a compact, basic monitoring product. The WVR5200 offers uncompromised monitoring quality with sharp CRT-like traces, patented Gamut displays, picture thumbnail, display freeze, and an error log for 10,000 events for efficient content compliance verification.

- Video Monitoring Standards and Formats
 - 3G-SDI (Level A and Level B) – Option 3G
 - High Definition SDI – Standard
 - Standard Definition SDI – Standard
 - Dual Link (4:2:2, 4:4:4, alpha channel, 10 bit, 12 bit) – Standard
 - Multiple Input Mode (with Option CAM) allows simultaneous display of up to 4 inputs for various trace displays
 - Two-channel Simultaneous Monitoring (Option CAM)
- Color Gamut Monitoring
 - Arrowhead Display – Standard
 - Diamond and Split Diamond Displays – Standard
 - Spearhead Display – Option PROD
 - Luma Qualified Vector (LQV™) – Option PROD
- Audio Monitoring
 - 16-channel Digital AES/EBU (Embedded) – Option AUD
 - Audio Loudness Monitoring to ITU-R BS.1770-3 – Option LOUD
- Measurement and Analysis
 - Simultaneous CEA708/608 Closed Caption monitoring; Teletext and OP47 Subtitle Monitoring – Option DATA
 - SDI Digital Data Analysis – Option DATA
 - ANC Data Inspector – Option DATA
 - SDI Stereoscopic 3D Monitoring – Option S3D
 - Color Bar and Pathological Signal Generation – Option GEN

Ease of Use

The intuitive user interface provides backlit buttons and online help. 32 user-configurable presets allow users to recall commonly used configurations tailored to your personal work practices. These presets can be transferred to and from other units (same model) using the front-panel USB port. An Ethernet port allows for easy download of screenshots and the Error Log.

Alarm Status				Active Log			
Page 1 of 5				Filter: All 03/02/2011 Page 49 of 49			
Alarm	Status	Additional Information		Source	Error Status	Timecode	Time
HW Fault	OK			Audio Over-Level	---	09:03:57:21	01:37:45
SDI Input Missing	OK			Audio Over-Level	---	09:03:58:13	01:37:46
SDI Input Signal Lock	OK			Audio Over-Level	---	09:03:58:21	01:37:47
Reference Missing	Alarm	No Signal		Audio Over-Level	---	09:04:00:15	01:37:48
Ref Lock	Alarm	No Signal		Audio Over-Level	---	09:04:01:22	01:37:49
Ref Fmt Mismatch	OK			Audio Over-Level	---	09:04:02:14	01:37:50
RGB Gamut Error	OK			Audio Over-Level	---	09:04:03:23	01:37:51
Composite Gamut Error	OK	C-		Audio Over-Level	---	09:04:04:15	01:37:52
Luma Gamut Error	OK			Audio Over-Level	---	09:04:05:22	01:37:53
Video Fmt Change	OK			Audio Over-Level	---	09:04:06:15	01:37:54
Video Fmt Mismatch	OK			Audio Over-Level	---	09:04:07:22	01:37:55
Vid/Ref Mismatch	OK			Audio Over-Level	---	09:04:08:15	01:37:56
Video Not HD	OK			Audio Over-Level	---	09:04:09:22	01:37:57
Dual Link Format Mismatch	OK			Audio Over-Level	---	09:04:10:15	01:37:58
Line Length Error	OK			Audio Over-Level	---	09:04:11:22	01:37:59
Field Length Error	OK			Audio Over-Level	---	09:04:12:15	01:18:00
EAV Place Error	OK			Audio Over-Level	---	09:04:13:23	01:18:01
SAV Place Error	OK						
Line Number Error	OK						
Arrow Left - Previous page, Right, Down - Next page.				Arrow Left - Previous, Right - Next, Up - First, Down - Last.			
Video Session				Audio Session			
Input: SDI Input 1A Signal: Locked				Audio Input: Embedded A Signal: Loss			
Effective: Auto 1080i 59.94 - HD SDI 422 - 262M 1.485/Gbps				Channel 1 2 3 4 5 6 7 8			
Selected: Auto Format - Auto Structure - Auto Transport				Clip 0 0 0 0 0 0 0 0			
32M Payload:				Over 0 0 0 0 0 0 0 0			
SAV Place Err: OK Y Stuck Bits: -----				Lead 0 0 0 0 0 0 0 0			
Field Length Err: OK C Stuck Bits: -----				Mute 0 0 0 0 0 0 0 0			
Line Length Err: OK				Silence 0 0 0 0 0 0 0 0			
Line Number Err: OK				Peak (dBFS) -17.9 -6.3 -18.4 -17.5 -18.8 -18.8 -18.8 0.0			
Ancillary Data: Y Present				High (dBFS) -18.2 -7.6 -18.8 -17.9 -19.0 -19.0 -19.0 0.0			
Statistics Status Err Secs Err Fields % Err Fields				Active bits 24 24 24 24 24 24 24 24			
RGB Gamut Error OK 1 1 0.0031 %				Ltk (LkFs) -23.0 -23.0 -23.0 -23.0 -23.0 -23.0 -23.0 -3.6			
Comp Gamut Error OK 406 23798 72.8012 %				Ltk (LkFs) -20.0 -20.0 -20.0 -20.0 -20.0 -20.0 -20.0 -3.5			
Luma Gamut Error OK 1 1 0.0031 %				Page 1 LkFs Inf: -18.0 Short: -16.0 Short Pd: 10s Chans: 1 2 3 4 5 6			
Y Chan CRC Error OK 9 18 0.0469 %				Changed since reset: Yes Run Time: 0 4, 00:14:11 Running			
C Chan CRC Error OK 9 18 0.0469 %				Press "SEL" to reset. Any "arrow key" stops/start.			
Y Anc Checksum Error OK 0 0 0.0000 %							
C Anc Checksum Error OK 2 2 0.0052 %							
Black Events: 2 Frozen Events: 0							
Press "SEL" to reset. Any "arrow key" stops/start.							
1080i 59.94 SDI Input 1A Ref: Internal				ID: MODEL 5200 Emdb: FFFF FFFF FFFF FFFF Anc LTC: 09:04:15:20 30 fps DF			

Quad Tile display of Alarm Status, Error Log, Video, and Audio Sessions.

See and Solve Displays

The “See and Solve” displays simplify video monitoring tasks such as calibration, error detection, and content correction allowing the user to detect errors at a glance and troubleshoot them efficiently.

Telestream displays offer the sharpest CRT-like trace quality for clear waveform monitoring with the look and feel of an analog display. The familiar video waveform display can show SD/HD/3G-SDI signals in RGB, YPbPr, YRGB, or pseudo composite. Signal components can be displayed in either Parade or Overlay mode. Cursors within the waveform display allow precise measurement of Voltage and Time to be made. The vector display offers user-selectable gratitudes, color targets (75% or 100%), and color axis.

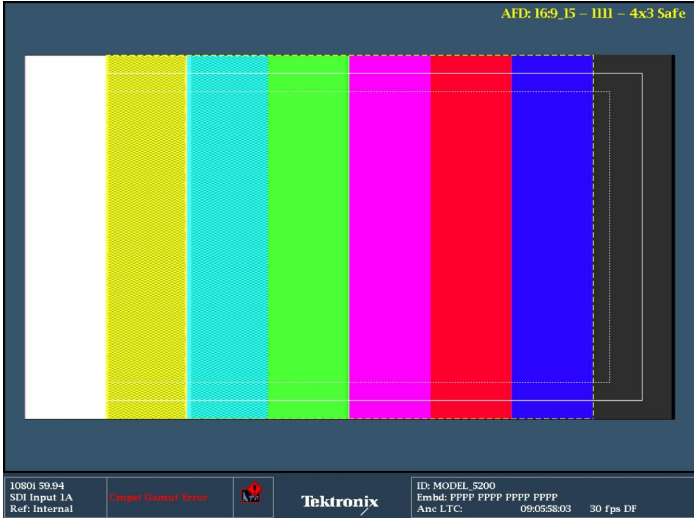
With several sweep rates and easy control of vertical gain and horizontal magnification, you can efficiently monitor and measure video waveform parameters.

Specialized displays provide summarized, yet comprehensive reports of alarms, session, and status of content. Powerful displays such as Video Status show a condensed view of error statistics, signal format, presence of ancillary data, and more. These exclusive displays simplify monitoring tasks by providing important content information at a glance.

The Black and Frozen frame detection can be used to alert the operator to a problem in the transmission chain. These and other errors can automatically be logged in the Error Log and provided as a report.

Alarms, Quality Statistics, and Logging – Thorough and Fast Content Verification

The WVR5200 offers a variety of displays designed to show status at a glance, in addition to the status bar continually displayed at the bottom of the screen.



Picture display with Safe Area Graticule and AFD information.

A comprehensive overview of the video content status is presented in the Video Session display. Offering a time-based compilation of information, this screen is ideal for presenting evidence of compliance after content screening. Information on input format and session time is presented, along with statistics on Error Detection and Handling (EDH) / Cyclic Redundancy Check (CRC) and gamut errors.

The Alarm Status display provides continuous information on the state of each condition currently being monitored by the instrument.

To support unattended monitoring and QC applications, as well as provide documentation for service-level agreements, these instruments maintain an error log of 10,000 events, which facilitates the detection and correction of problems. Log entries are recorded with date, time of day, and time code (VITC, LTC, ANC). The error log can be downloaded to a USB memory stick or through a network connection to .TXT or .HTM formats for easy record keeping and processing on spreadsheets or database software.

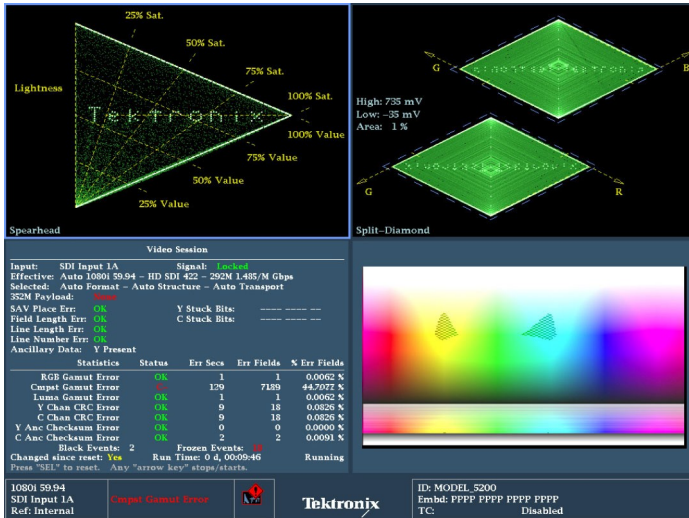
Picture Display – Quick Visual Confirmation and Precision Content Adjustment

For a qualitative view of the content, a full-color Picture display is offered, which can be displayed as a full-screen presentation. This display is compatible with all input formats and features automatic adjustment for aspect ratio and number of active lines.

You can select bright-up conditions that show the location of RGB or composite gamut errors on the Picture display. The Line Select mode shows the location of the line currently selected within the Picture display.

Users can choose from several Safe Action and Safe Title gratitudes on the Picture display which help editors and operators easily identify incorrectly positioned video content such as graphics, titles, or logos.

Graticule choices include the Safe Action and Safe Title gratitudes defined in SMPTE RP218, ITU, and ARIB standards, plus two sets of completely flexible, user-definable gratitudes. These gratitudes facilitate editing tasks and reduce the need for format conversions.



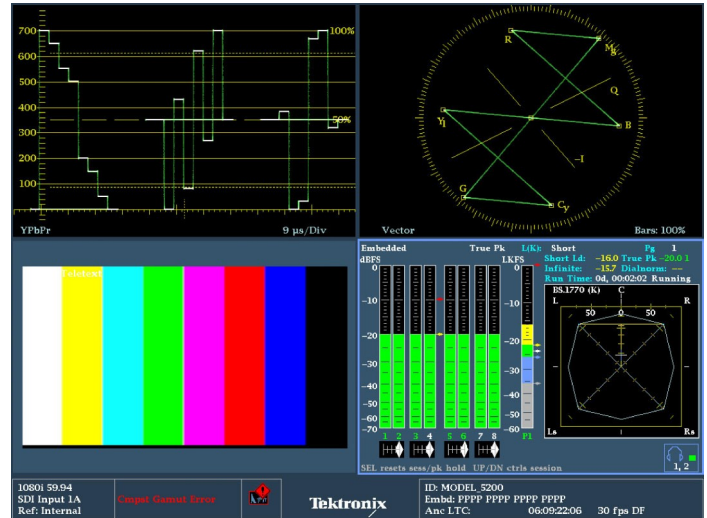
Spearhead and Diamond gamut displays.

Patented Gamut Displays – Efficiently Detect and Allow Correction of Gamut Problems

The patented Diamond, Split Diamond, and Arrowhead displays simplify the process of verifying gamut compliance and are ideal for colorists, editors, and operators to visualize whether the content is RGB or Composite Gamut compliant with a single glance. Plus, they are designed to help isolate the Out-of-Gamut component just as easily. For SDI component content that is destined for broadcast in composite systems, the unique Arrowhead display can be used to monitor Composite Gamut compliance without the need for a separate encoder. Within this display, a separate upper and lower luma-only gamut limit can be applied.

Each of these displays offers user-selectable gamut thresholds so operators can set monitoring limits appropriate to their specific operation and include a preset for EBU-R103. You can also select bright-up conditions to see the location of gamut errors on the Picture display. In addition, gamut monitoring is fully integrated with the powerful alarm logging and reporting capabilities of the WVR5200.

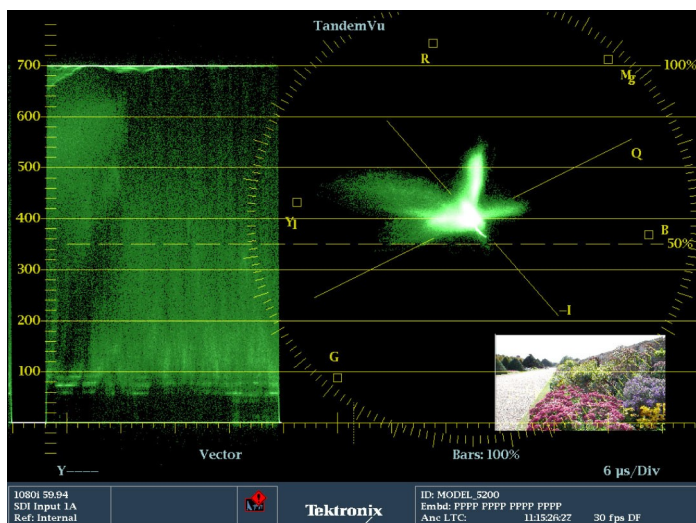
The WVR5200 also features new optional advanced color gamut monitoring capabilities (Option PROD) including the patented Luma Qualified Vector (LQV™) display and Spearhead display that, when used in conjunction with proprietary Diamond and Split Diamond gamut displays, provide the most comprehensive color gamut monitoring tools available for precise color gamut adjustments.



Quad Tile display allows for displays to be viewed simultaneously.

Quad Tile Display – Flexible Monitoring Configuration Customized to Suit Your Application

Telestream offers multiple display options to suit a variety of applications that can be customized to the user's needs. The Quad Tile display provides flexibility to increase your productivity. The user can configure four different displays within the one instrument. A maximum of two traces can be displayed, along with picture, status, and audio bars to create flexible monitoring configurations that can be saved as presets for quick and easy recall. For instance, a waveform parade, vector, picture, and audio bar display can be configured to monitor the audio and video signal simultaneously within the Quad Tile display. Unlike instruments with predetermined view combinations, Quad Tile lets you create a Quad Tile display tailored to your specific needs and work practices. Each tile can be configured to enable easy signal analysis such as multiple alarm and status screens, different Safe Area Graticules and cursors on each tile, and more.



TandemVu® allows camera alignment of luma and chroma within Full Screen display.

TandemVu® Display – Customized Waveform and Vector View

TandemVu® provides the ability to visualize waveform and vector or lightning displays simultaneously. Each trace can be positioned and magnified individually based on the user's preferences.

TandemVu® provides operators with an efficient way to adjust and balance cameras in production studios or outside broadcast (OB Vans) applications.

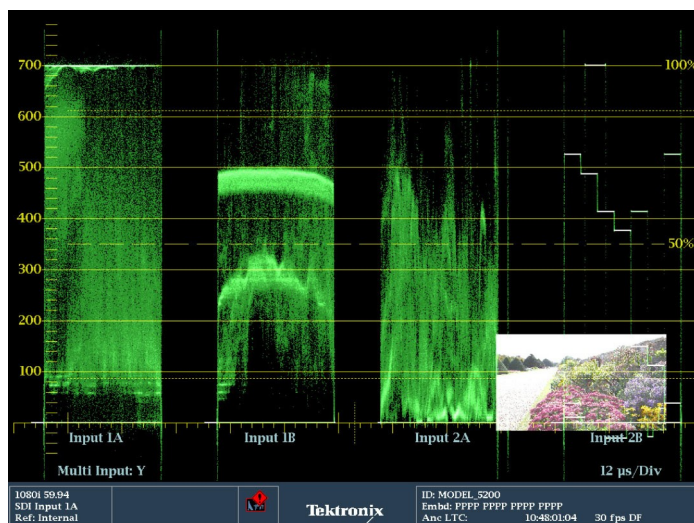
The Line Select provides a line marker in full-screen and thumbnail picture modes.

The vector display is offered with selectable 75% and 100% targets.

Each display automatically selects the appropriate graticule based on the input format.

Multiple Input Mode Display – Multiple Cameras Balance Mode (Option CAM)

Multiple Input Mode display (Option CAM) is ideal for monitoring multiple camera inputs in a mobile truck (OB van) or production studio. Typically the operator can compare up to four camera inputs and can make adjustment of the four luma levels to match the cameras from scene to scene in Overlay or Parade modes. Allowing for the comparison of video inputs across a wide variety of these displays, various other trace modes such as Vector, Lightning, Diamond, Split Diamond, and Arrowhead can also allow the multiple inputs to be overlaid. Select any combination of the four inputs from the input buttons on the front panel to view the input within the trace display in Full Screen mode. For easy identification of the input the user can create customized labels that appear directly under the waveform trace in a Y parade of the active signals.

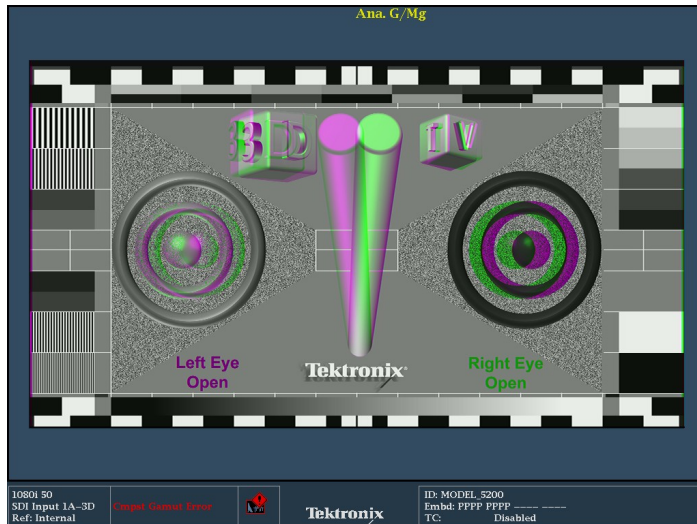


Multiple Input Mode display showing four luma signals, ideal for multiple-camera balancing.



Two-channel simultaneous monitoring of waveform and picture input, ideal for monitoring multiple camera inputs.

Two-channel Simultaneous Monitoring (Option CAM) is ideal for monitoring multiple camera inputs or comparison of incoming and outgoing transmission chains. The simple Simultaneous Input Monitoring (CAM) capability of the WVR5200 provides flexibility in monitoring multiple inputs. In mobile truck (OB van) applications this allows the operator to compare two different camera inputs with picture and waveform displays. This capability can also help operational staff quickly determine if a video quality problem existed in the input signal or arose in their facility. It enables engineering staff to quickly detect, diagnose, and resolve technical problems introduced in a piece of video equipment by comparing the input and output signals at each point in the chain.



3D monitoring of left and right eye.

3D Stereoscopic Monitoring

3D stereoscopic monitoring and displays are available for SDI signals on the WVR5200 with Option S3D. A 3D image is comprised of a Left Eye and Right Eye image to be fed as two separate HD-SDI signals or combined within a 3G Level B format. Alternatively, the 3D signal can be carried in a single HD-SDI signal as a Side by Side image for the left and right images. A variety of different 3D monitoring modes are available within the instrument to assist the user in determining the difference between the Left Eye and Right Eye views. From this disparity difference between the two left and right images, the depth of an object within the image can be determined. For monitoring purposes a variety of displays can be set up within the Picture mode:

Difference Map Display – A subtraction of the two luma video signals L-R or R-L to produce a grayscale difference map image and see the difference between the left and right images.

Red/Cyan Anaglyph Display – The left image is shown in red and the right image is shown in cyan, with identical left and right objects shown in monochrome. This allows the user to isolate differences between objects and gauge the depth of the object within the image.

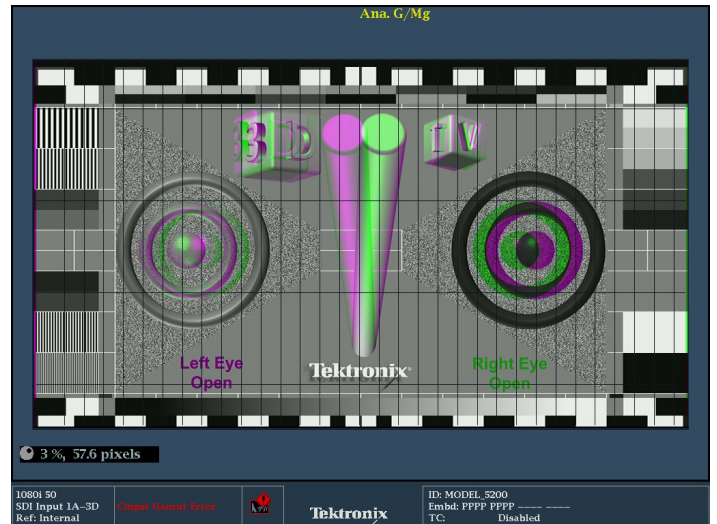
Green/Magenta Anaglyph Display – The left image is shown in green and the right image is shown in magenta, with identical left and right objects shown in monochrome.

Checkerboard Display – This picture display shows a block of the image from the left eye and then the next block shows the image from the right eye in a 16×9 checkerboard pattern. This helps the user compare the levels and color of the signal between the left and right images.

These modes help the user compare the disparity between the left and right images and can assist in interpreting the depth of the objects within the image.

3D Stereoscopic Measurement

For measurement of the depth of an object within the image (Option S3D) a Disparity Grid can be overlaid over the picture with a horizontal disparity between 1 to 15% of screen width and a vertical disparity of 50%, 25%, or 10% that can be selected by the user. The horizontal and vertical position

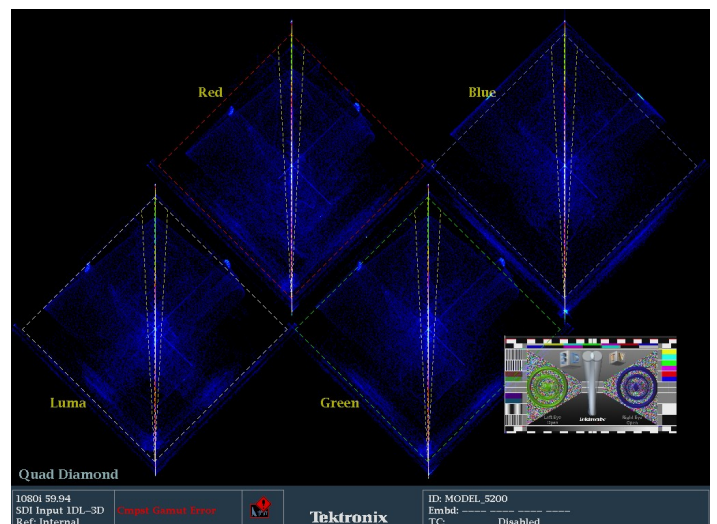


3D monitoring using a disparity grid.

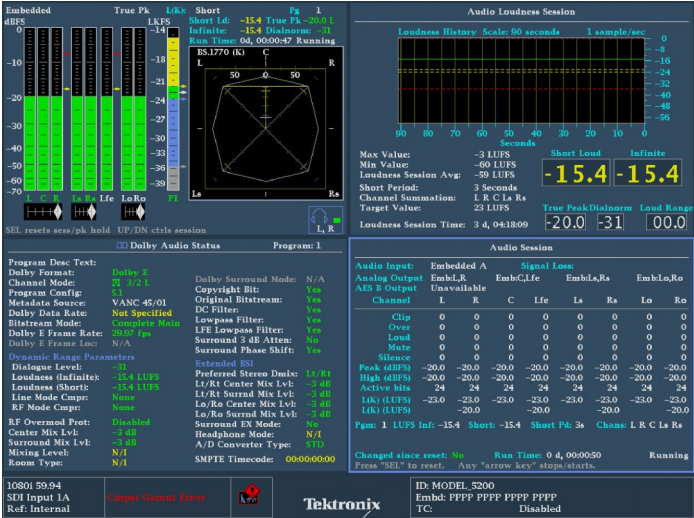
controls allow the Disparity Grid to be moved around within the picture display to gauge the depth of objects within the image. A set of Disparity Cursors are also available for precise measurement of horizontal disparity of an object between the Left and Right Eye images. Readout is given of the pixel difference between the cursors and the percentage of disparity of an object.

Quad Diamond Display for 3D Alignment

The patented Quad Diamond display (Option S3D) simplifies stereoscopic camera alignment by showing a disparity histogram of the left and right signal from a signal level of 0 to 100% vertically for each of the components: Luma, Red, Green, and Blue. If the two cameras are well balanced, then the trace will form a vertical trace for each of the diamonds. A deviation in the trace indicates an imbalance between the left and right eye images that should be corrected using the various camera controls until the trace becomes vertical. This display can also be used in post-production for aiding the editor and perform color correction on the left and right images.



Quad Diamond display for stereoscopic alignment.



Audio display with Surround Sound and Loudness monitoring.

Digital Audio and Video Monitoring in One Instrument (Option AUD)

The WVR5200 (with Option AUD) provides high-quality digital filtering and oversampling to insure precise, reliable, and repeatable audio measurements. The instrument provides 16-channel embedded digital audio monitoring with Audio Bars, Lissajous Displays, Surround Display¹, and a front-panel headphone port for easy compliance verification of digital audio without the need for an additional piece of equipment. Flexible mapping of the embedded audio inputs to the audio bar displays allows for a variety of audio mixes to be supported from multiple stereo signals to surround and stereo support.

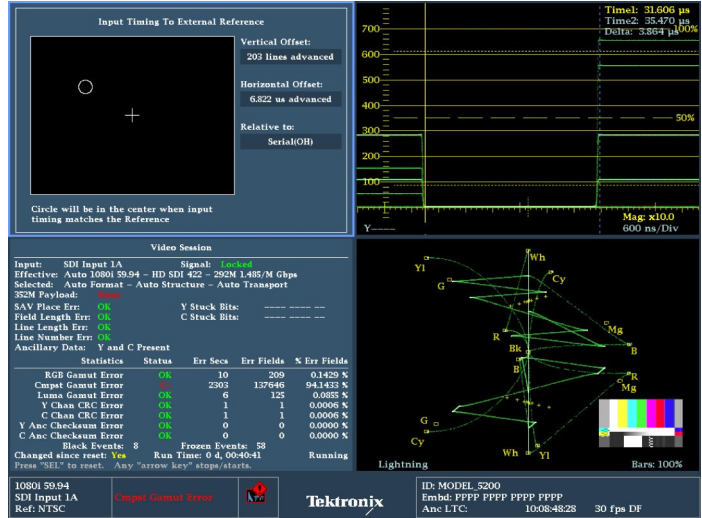
The Surround Sound¹ display provides intuitive graphical representation of channel interaction in a surround sound system. The Bars display provides indication for faults, audio levels, and provides indication of the presence of a Dolby format. The flexible Lissajous display allows the selection of any two audio channels.

Loudness measurements are made to ITU-R BS.1770-3/1771, EBU R 128, and ATSC A/85 recommendations. A Loudness meter (with Option LOUD) is available within the Audio display that provides Short and Infinite Loudness measurements. The Loudness session display graphically plots Loudness measurements over time, from 90 seconds to 30 hours. The Loudness measurements can be downloaded through the network or saved to USB for further analysis.

Specialized audio displays provide deeper inspection of the signal and make the WVR5200 instrument a comprehensive compact waveform and audio rasterizer. The audio session displays summarize levels, faults, and number of active bits for each channel. These instruments also feature Audio Control Packet Data and Channel Status displays.

The Dolby metadata can be monitored within the instrument using the Dolby Status display that gives an in-depth view of VANC Dolby metadata that complies with the SMPTE 2020 standard. The user can also choose to monitor Dolby E guardband timing information from one of the embedded audio channels.

¹Audio Surround Sound Display licensed from Radio Technische Werksütten GmbH and Co. KG (RTW).



Timing and Lightning displays simplify timing tasks.

Facility Timing Made Easy

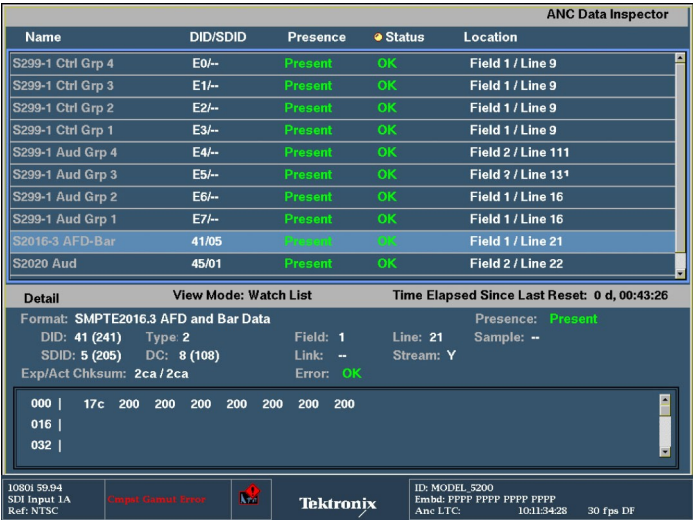
Synchronization is one of the most fundamental and critical procedures in a video facility. Every device in a system must be synchronized in order to successfully create, transmit, and recover video pictures and audio information. The intuitive Timing display clearly shows the timing offsets between HD and SD signals relative to the reference.

This patented Timing display makes facility timing easy through a simple graphical representation which shows the relative timing of the input signal and the reference signal (or a saved offset reference) on an X-Y axis. Simply adjust the timing of the equipment until the circle is within the center of the display for precise, direct measurements of vertical offset in number of lines and horizontal offset in μ s.

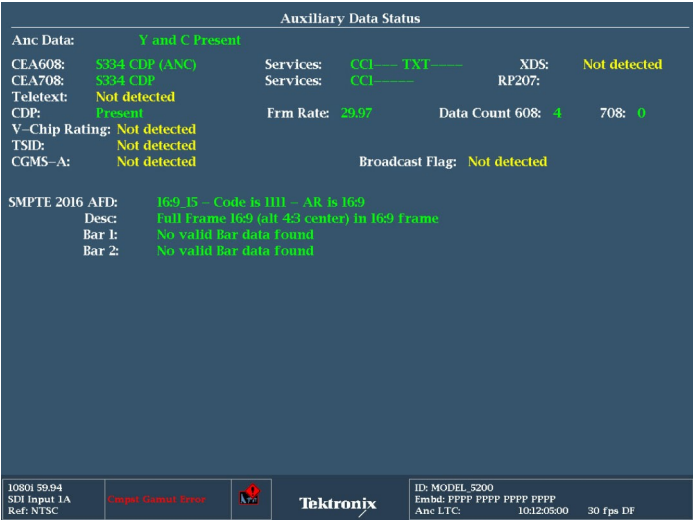
The Lightning display shows luma and chroma amplitudes and helps users verify component timing using a color-bar signal. The patented Bowtie display complements the timing measurement capability of the Lightning display. Using a special Bowtie test signal in component format, this display helps make precise, accurate measurements of interchannel amplitude and timing.

Troubleshoot Signal Paths

A simple test signal (Option GEN) can be generated from the SDI output that produces 100% or 75% color bars along with pathological test signals. This can be useful for troubleshooting a signal path or piece of equipment without the need to carry an additional generator.



ANC Data Inspector provides detailed content analysis.



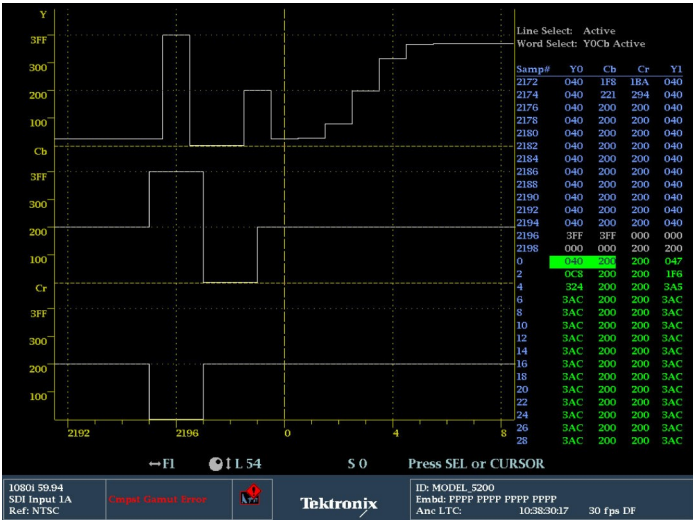
Monitoring of Ancillary data (Closed Caption, Time Code, and AFD) using Aux Data Status.

Superior Data Analysis Capabilities for Operators and Engineers (Option DATA)

The ANC Data Inspector provides an industry-leading solution to help broadcasters easily and accurately ensure that all required VANC data is present and correctly configured through an intuitive ANC data display.

In contrast to other solutions, the ANC Data Inspector enables operators to quickly and easily ensure that the VANC data is present and free of errors. When errors are detected, engineers are quickly guided to a more detailed view of the data packet content for further analysis.

Closed Caption (CEA708/608) and individual Teletext subtitles can be simultaneously decoded and displayed within the Picture display. Teletext subtitle pages can be decoded in either WST or OP47 format.



Datalist display provides detailed pixel-by-pixel information.

The Auxiliary Data Status display provides summary information on Active Format Description (AFD) per SMPTE 2016, Video Index Aspect Ratio, Wide Screen Signaling (WSS), V-Chip, TSID, CGMS-A, Broadcast Flag, CEA708/608 Closed Caption, Teletext, and Time Code information.

Today there is a wide array of metadata that provides information to a variety of equipment through the processing chain. Monitoring of this metadata is critical to ensure that the processing equipment correctly handles the signal. For instance, correct format of the AFD ensures that the aspect ratio on the display is correctly formatted and the automated AFD graticule is available for the Picture display of the WVR5200 along with the binary data and text description for easy monitoring.

The Datalist display provides detailed information on the actual data values in HD/SD-SDI and 3G-SDI (with Option 3G) input signals. Users can easily use this display to locate protocol errors in the input signals.

The right side of the display shows the data values in hexadecimal, decimal, or binary format and uses the following color coding for easy identification of data types and errors:

- Green – Active video data
- Blue – Data in horizontal or vertical blanking intervals
- White – EAV, SAV, and other reserved words
- Yellow – Data outside nominally allowed values
- Red – Data with illegal values

The left side of display shows un-interpolated digital values plotted against sample numbers as a digital waveform. You can configure this unique display in either Video mode or Data mode.

In Video mode, the display shows the Y, Cb, Cr values aligned temporally, but offset vertically. Like the waveform display, you can configure the display to show 1, 2, or all 3 components.

Video Input and External Reference Formats Supported

Automatic Detection of a Wide Range of Signal Formats

The WVR5200 waveform rasterizer accepts a wide variety of input signal formats and external references. The rasterizer will automatically detect the signal format and establish the appropriate settings for the various displays.

Setting	STD	SD	STD	HD	External Reference Inputs											
					Bi-level Sync		Tri-level 720p			Tri-level 1080p		Tri-level 1080i			1080 SF	
					NTSC	PAL	50 Hz	59.94 Hz	60 Hz	23.98 Hz	24 Hz	50 Hz	59.94 Hz	60 Hz	23.98 Hz	24 Hz
BT601 483i, 59.94 Hz (525)	X			X			X				X					
BT601 576i, 50 Hz (625)	X				X					X						
296M 720p, 23.98 Hz		X		X			X		X		X		X			
296M 720p, 24 Hz		X					X		X			X		X		
296M 720p, 25 Hz		X			X					X						
296M 720p, 29.97 Hz		X		X			X				X					
296M 720p, 30 Hz		X					X					X				
296M 720p, 50 Hz		X			X					X						
296M 720p, 59.94 Hz		X		X			X				X		X			
296M 720p, 60 Hz		X					X		X			X		X		
240M 1035i, 59.94 Hz		X		X			X				X					
240M 1035i, 60 Hz		X					X		X			X		X		
274M 1080i, 50 Hz		X			X					X						
274M 1080i, 59.94 Hz		X		X			X				X					
274M 1080i, 60 Hz		X					X		X			X		X		
274M 1080p, 23.98 Hz		X		X			X		X		X		X			
274M 1080p, 24 Hz		X					X		X			X		X		
274M 1080p, 25 Hz		X			X					X						
274M 1080p, 29.9 Hz		X		X			X				X					

Setting STD SD STD HD

Setting	STD	SD	STD	HD	External Reference Inputs											
					Bi-level Sync		Tri-level 720p			Tri-level 1080p		Tri-level 1080i			1080 SF	
					NTSC	PAL	50 Hz	59.94 Hz	60 Hz	23.98 Hz	24 Hz	50 Hz	59.94 Hz	60 Hz	23.98 Hz	24 Hz
274M 1080p, 30 Hz			X					X					X			
274M 1080sf, 23.9 Hz			X		X			X				X		X		
274M 1080sf, 24 Hz			X					X		X			X		X	
274M 1080sf, 25 Hz			X		X					X						
274M 1080sf, 29.9 Hz			X		X		X					X				
274M 1080sf, 30 Hz			X					X					X			

Supported Dual Link Formats

Format	Sample Structure	Frame/Field Rates
Dual Link		
1920 × 1080	4:2:2 YCbCr 10 bit	60, 60/1.001, and 50 progressive
	4:4:4 RGB	30, 30/1.001, 25, 24 and 24/1.001 progressive, PsF 60, 60/1.001, and 50 fields interlaced
	4:4:4:4 RGB +A 10 bit	
	4:4:4 RGB 12 bit	
	4:4:4 YCbCr 10 bit	
	4:4:4:4 YCbCr +A 10 bit	
	4:4:4 YCbCr 12 bit	
2048 × 1080	4:2:2 YCbCr 12 bit	30, 30/1.001, 25, 24, and 24/1.001 progressive, PsF
	4:2:2:4 YCbCr +A 12 bit	
	4:4:4 RGB	
	4:4:4:4 RGB +A 10 bit	
	4:4:4 RGB 12 bit	
	4:4:4 YCbCr 10 bit	
	4:4:4:4 YCbCr +A 10 bit	
	4:4:4 YCbCr 12 bit	
	4:2:2 YCbCr 12 bit	
	4:2:2:4 YCbCr +A 12 bit	
	4:4:4 XYZ 12 bit	

Supported 3G Single Link Formats

Format	Sample Structure	Frame/Field Rates
3G-SDI Formats		
Single Link		
1920 × 1080	4:2:2 YCbCr 10 bit Level A and Level B	50, 59.94, 60 progressive
	4:2:2 YCbCr 10 bit Level B	23.98, 23.98sF, 24, 24sF, 25, 25sF 29.97, 29.97sF, 30, 30sF progressive 50, 59.94, 60 interlaced
	4:4:4 YCbCr 10 bit	23.98, 23.98sF, 24, 24sF, 25, 25sF, 29.97, 29.97sF, 30, 30sF progressive 50, 59.94, 60 interlaced
	4:4:4:4 YCbCr 10 bit Level B	
	4:4:4 RGB 10 bit	
	4:4:4:4 RGB +A 10 bit Level B	
2048 × 1080	4:4:4 RGB 12 bit Level B	23.98, 23.98sF, 24, 24sF, 25, 25sF, 29.97, 29.97sF, 30, 30sF progressive
	4:2:2 YCbCr 12 bit	
	4:2:2:4 YCbCrA 12 bit Level B	
	4:4:4 YCbCr 12 bit Level B	
2 × HD 1920 × 1080	4:4:4 RGB 12 bit Level B	23.98, 23.98sF, 24, 24sF, 25, 25sF, 29.97, 29.97sF, 30, 30sF progressive 50, 59.94, 60 interlaced
	4:4:4 XYZ 12 bit Level B	
2 × HD 1280 × 720	4:2:2 YCbCr 10 bit Level B	23.98, 24, 25, 29.97, 30, 50, 59.94, 60 progressive

Characteristics

Serial Digital Video Interface

Characteristic	Description
Inputs	4 inputs Auto-detection between 3G, Dual Link, HD, and SD signals (Option 3G required for 3G formats)
Input Type	BNC, internally terminated 75 Ω
Input Level	800 mV _{R-P} , $\pm 10\%$
Input Equalization	270 Mb/s: Up to 215 m of type 1694A cable 1.5 Gb/s: Up to 200 m of type 1694A cable 3 Gb/s: Up to 130 m of type 1694A cable
Output	SDI Switched Output. Selectable, active input, or test signal
Return Loss (Inputs and Outputs)	>15 dB from 1 MHz to 1.5 GHz, power on or off >10 dB from 1.5 GHz to 3 GHz, power on or off
Monitor Output	Signal Format (DVI-I Output) – 1024×768, 60 Hz vertical rate

External Reference

Characteristic	Description
Sync Formats	NTSC and PAL and tri-level sync
Input Type	Passive loop through BNC, 75 Ω compensated
DC Input	20 k Ω , nominal
Impedance	
Return Loss	>40 dB to 6 MHz >35 dB to 30 MHz
Lock Range	± 50 ppm

Serial Digital Waveform Vertical Characteristics

Characteristic	Description
Vertical Measurement Accuracy	At 1x gain, $\pm 0.5\%$ of 700 mV full scale; at 5x gain, $\pm 0.2\%$ of 700 mV full scale
Gain	1x, 5x, variable range 0.25x to >7.5x
Frequency Response	
SD	Luminance (Y) channel $\pm 0.5\%$ to 5.75 MHz Color Difference channels (Pb, Pr) $\pm 0.5\%$ to 2.75 MHz
HD	Luminance (Y) channel $\pm 0.5\%$ to 30 MHz Difference channels (Pb, Pr) $\pm 0.5\%$ to 15 MHz

Waveform Horizontal Characteristics

Characteristic	Description
Sweep Timing Accuracy	$\pm 0.1\%$
Sweep Linearity	$\pm 0.1\%$

Audio Characteristics

Characteristic	Description
Level Meter Resolution	0.056 dB steps at 30 dB scale from full scale to -20 dBFS
Meter Ballistics	0.20 dB steps at 70 dB scale for signals above -20 dBFS
Defined/Programmable Level Detection	True peak, PPM type 1, PPM type 2, BBC PPM, Loudness
Level Meter Accuracy	Mute, clip, user-programmable silence, over
	-0.5 dB (for analog), -0.2 dB (for digital) from 20 Hz to 20 kHz, 0 to -40 dBFS sine wave, Peak Ballistic mode

Power

- 12 V DC In
- Power adapter accepts 100 to 240 V AC $\pm 10\%$ 50/60 Hz

Input Voltage

Characteristic	Description
Voltage Range	12 to 15 V DC nominal 10.75 to 18V DC min-max operating
Supply Connection	XLR 4-pin male connector Pin 1 = V(–) Pin 4 = V(+) Pin 2, 3: NC
Power Consumption	27 W typical 35 W max
Surge	10 A at 12 V
Fuse Rating	4 A, internal self-resetting fuse
Transient, Over, and Reverse Voltage	Transient, Over, and Reverse- and over-voltage protected to ± 30 V DC
Reverse Voltage	The unit may power itself down in the presence of high transient voltages. This prevents damage to the unit and is not a fault

Physical Characteristics

Dimension	mm	in.
Height	43	1.7
Width	213	8.4
Depth	140	5.5
Weight	kg	lb.
Net	0.8	1.8

Ordering Information

Model	Option	Description
WVR5200		3G/HD/SD Waveform Rasterizer, 4 SDI Inputs (3G, HD, and SD-SDI support on the same inputs – auto detect) Base unit includes HD, SD, and Dual-Link signal format support Option 3G required for 3G-SDI support
	3G	Add support for 3G-SDI signal formats (Level A and Level B)
	AUD	Add 16-channel Embedded AES Audio Monitoring (including Multichannel Surround Sound Display)
	CAM	Add multiple camera (up to 4 cameras) simultaneous monitoring capability
	DATA	Add Ancillary Data monitoring (including decoding of 708 and 608 Closed Captions, Teletext and OP47 Subtitles, AFD, and CGMS-A), ANC Data Inspector, and advanced Data Analysis capabilities
	GEN	Add 3G/HD/SD-SDI Color Bar and Pathological Signal Generation capability Option 3G required for 3G-SDI Signal Generation capability
	LOUD	Add Audio Loudness monitoring capabilities including Loudness Meter, Loudness Trend Chart, and Loudness Data Logging capabilities Must also order Option AUD
	PROD	Add Advanced Gamut Monitoring Package (including Spearhead display and Luma Qualified Vector display)
	S3D	Add monitoring support for SDI stereoscopic 3D video

Note: Please specify power plug when ordering.

Post Sale Upgrade Options

Model	Option	Description
WVR520UP		Post Sale Upgrade for WVR5200 3G/HD/SD-SDI Waveform Rasterizer Option 3G required to be installed in the WVR5200 for 3G-SDI support
	3G	Add support for 3G-SDI signal formats (Level A and Level B)
	AUD	Add 16-channel Embedded AES Audio Monitoring (including Multichannel Surround Sound Display)
	CAM	Add multiple camera (up to 4 cameras) simultaneous monitoring capability
	DATA	Add Ancillary Data monitoring (including decoding of 708 and 608 Closed Captions, Teletext and OP47 Subtitles, AFD, and CGMS-A), ANC Data Inspector, and advanced Data Analysis capabilities
	GEN	Add 3G/HD/SD-SDI Color Bar and Pathological Signal Generation capability Option 3G required for 3G-SDI Signal Generation capability
	LOUD	Add Audio Loudness monitoring capabilities including Loudness Meter, Loudness Trend Chart, and Loudness Data Logging capabilities Option AUD must also be installed in the WVR5200 base unit
	PROD	Add Advanced Gamut Monitoring Package (including Spearhead display and Luma Qualified Vector display)
	S3D	Add monitoring support for SDI stereoscopic 3D video

International Power Plugs

Option	Description
Opt. A0	North America power
Opt. A1	Universal Euro power
Opt. A2	United Kingdom power
Opt. A3	Australia power
Opt. A5	Switzerland power
Opt. A6	Japan power
Opt. A10	China power
Opt. A11	India power
Opt. A12	Brazil power
Opt. A99	No power cord or AC adapter

Optional Accessories

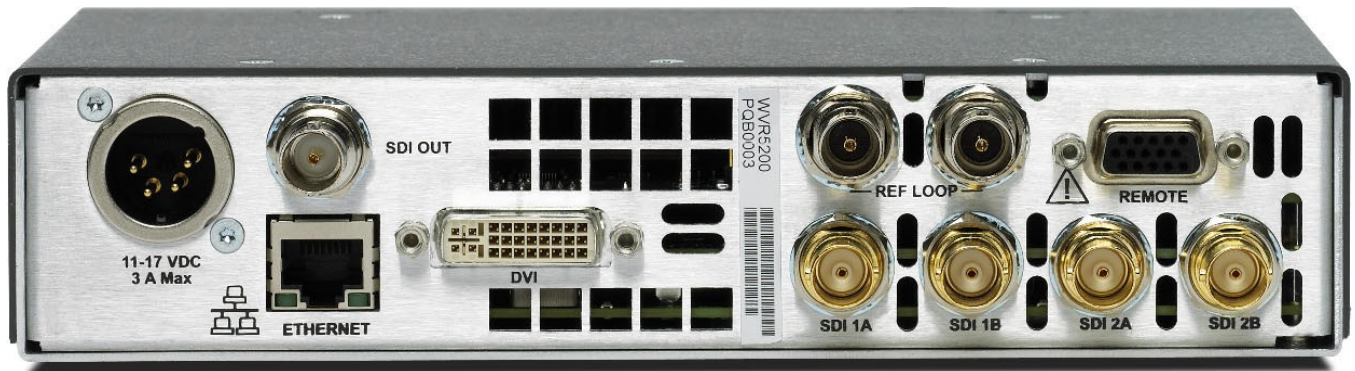
Accessory	Description
Cabinet Accessories	
VTSRACK-S2	Short-depth 1RU rack to fit one or two WVR5200 side by side
VTSRACK-L1	Full-depth 1RU rack to fit a single WVR5200
VTSRACK-L2	Full-depth 1RU rack to fit one or two WVR5200/WVR5000/SPG300 side by side

Service Options

Option	Description
Opt. C3	Calibration Service 3 Years
Opt. C5	Calibration Service 5 Years
Opt. D3	Calibration Data Report 3 Years (with Opt. C3)
Opt. D5	Calibration Data Report 5 Years (with Opt. C5)
Opt. G3	Complete Care 3 Years (includes loaner, scheduled calibration and more)
Opt. G5	Complete Care 5 Years (includes loaner, scheduled calibration and more)
Opt. R3	Repair Service 3 Years (including warranty)
Opt. R5	Repair Service 5 Years (including warranty)
Opt. R5DW	Repair Service Coverage 5 Years (includes product warranty period). 5-year period starts at time of customer instrument purchase. This option is available if the instrument is within product warranty. It is not available once instrument exits warranty period
Opt. R3DW	Repair Service Coverage 3 Years (includes product warranty period). 3-year period starts at time of customer instrument purchase. This option is available if the instrument is within product warranty. It is not available once instrument exits warranty period



WVR5200 Front Panel.



WVR5200 Rear Panel.





For Further Information. Telestream maintains a comprehensive, constantly expanding collection of application notes, technical briefs and other resources to help engineers working on the cutting edge of technology. Please visit www.telestream.net/video for sales and support contacts.

Copyright © 2019 Telestream, LLC and its Affiliates. All rights reserved. Telestream products are covered by U.S. and foreign patents, issued and pending. Information in this publication supersedes that in all previously published material. Specification and price change privileges reserved. TELESTREAM is a registered trademark of Telestream, LLC. All other trade names referenced are the service marks, trademarks, or registered trademarks of their respective companies.

