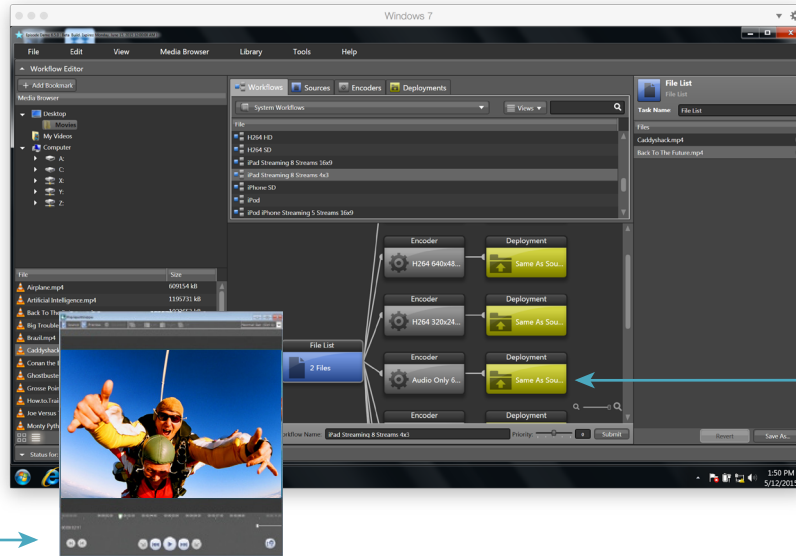


**Media Browser**  
Browse files from FTP servers, SMB shares, Autodesk file systems and local folders.

**Real-time preview**  
Frame-by-frame preview puts you in complete control.



**Presets**  
Hundreds of encoding and workflow presets.

**Inspector**  
Extensive filters and fine tuning controls to adjust all the settings you need.

**Graphical Workflow Builder**  
Simplifies the encoding process giving you complete control. Drag-and-drop manual encoding or automate with watch folders.

# Affordable transcoding for workgroups

Uncompromising quality, speed and control

**Telestream Episode®** multiformat encoding software provides the highest quality video transcoding for the entire digital post-production workflow – from camera to delivery – with remarkable speed, powerful controls and cross-platform scalability at an affordable price. It's easy to use: an intuitive drag-and-drop graphical user interface and workflow builder simplifies the encoding process.

## Affordable transcoding for workgroups

The scalability of Episode makes it a perfect choice for workgroups. A single software application for both PCs and Macs that supports desktop to workstation, single user to multi-user environments. It's easy and affordable to add encoding nodes or cluster machines for faster encoding when needed.

## Designed for the entire production workflow

One of the challenges in post-production is preserving the integrity of your original content while transferring it between incompatible systems in the production workflow. Episode has the quality, filters, formats, and power to handle the entire process from camera to edit and all the way to final delivery.

## Excellent picture quality

Best-in-class video processing and fine-tuning compression combine to allow you to generate pristine picture quality at up to 16-bit precision. Episode produces brilliant "true to the original" results for simple transcoding jobs as well as for more complex encoding jobs such as standards conversion. Bumpers, trailers and watermarks can also be added to enhance and protect your video content.



### Hands-on control

Episode was made with the creative professional in mind. Extensive control of codec and filtration parameters, along with a real-time preview, gives you complete hands-on control. The ability to fine-tune the video, with frame-by-frame video preview allows you to quickly and easily adjust your encoding and preprocessing settings.

### Support for virtually any video and audio file format

Episode supports the widest range of formats in its class, allowing you to repurpose media for websites, mobile devices, television, archive, disk authoring and more. Episode also lets you encode image sequences and create packages for Apple HLS, Microsoft Smooth Streaming and MPEG-DASH, with just a click of a button. Whatever your encoding needs may be, Episode can handle them.

### Watch folder automation

In file-based workflows, automated and shared transcoding are a must, and Episode can easily be configured to automatically pick up and deliver files to network shares and FTP servers. Episode can also be integrated into larger workflows via its command line and XML-RPC interfaces.

### Fast, robust and reliable

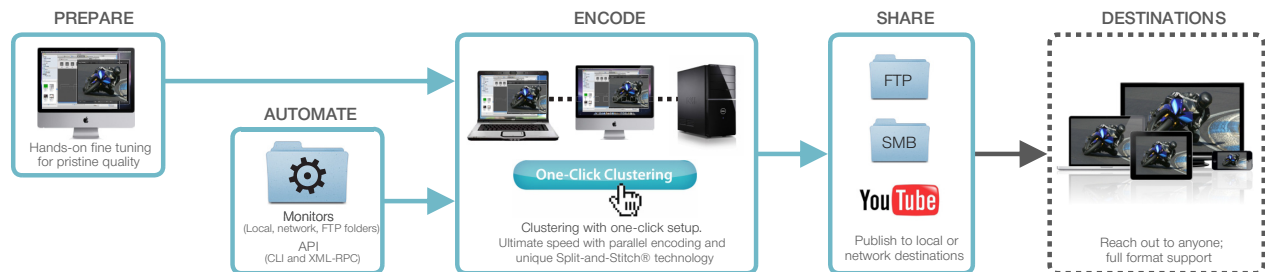
64-bit technology, optimized codecs and multi-thread processing mean ultra-fast encoding speeds. Additionally, the ability to encode multiple jobs in parallel further speeds encoding: Episode Pro allows parallel encoding of two jobs; Episode Engine allows parallel encoding of unlimited jobs.

### Speed up with Split-and-Stitch®

Distributed and segmented encoding with Split-and-Stitch (available in Episode Engine) lets you fully saturate the power of your multi-core machines for unrivaled transcoding speed.

### Affordable, cross-platform clustering and built-in file sharing

Collaboration and clustering are at the core of Episode's design. Easily join multiple machines together, both Mac and PC, and share encoding work among workstations. There is no need for costly add-ons or IT assistance. Episode's built-in file sharing system makes offloading work from one machine to another a snap. Simply prep your encoding work, send it off to the cluster and get it back when it's done.



# Technical Specifications

Episode  
Product Sheet

FEATURES	Episode	Episode Pro	Episode Engine	COMMENTS
Extensive format support up to super high resolution HD resolutions for new media, web, post-production, DVD/Blu-ray and more	■	■	■	HEVC, XAVC, MPEG-1/-2/-4, WMV9, VC-1, DV, WebM, 3GPP/3GPP2, M4A, MOV, ProRes*, DVCPRO HD; other QuickTime codecs and more. Optimized Flash 9 support
4K video support	■	■	■	
Streaming	■	■	■	HTTP Streaming, Smooth Streaming and DASH
Graphical workflow builder	■	■	■	Drag-and-drop interface makes building encoding workflows simple
One-Click Clustering with built-in file sharing	■	■	■	Allows any computer on the network, Mac or PC, to automatically join a transcoding cluster, with simply a click, for maximum flexibility and full scalability
Autodesk Smoke & Flame integration	■	■	■	Browse and monitor Autodesk file systems via Wiretap API
Adobe Premiere Pro plugin	■	■	■	Send files for transcoding from Premiere Pro
Monitors	■	■	■	Monitor local, network, or FTP folders for fully automated workflows
Automatic file deployment	■	■	■	Automatically deliver encoded files to local folders, network shares, FTP servers, and YouTube
Command Line Interface	■	■	■	Enabling custom integrations
JSON-RPC, XML-RPC interface	■	■	■	Enabling control over IP networks
Full 4:2:2:4 and 4:2:0 support, 10 bit 4:4:4:4 for pro formats	■	■	■	For optimized picture quality
Choose from many professional templates or flexible custom settings	■	■	■	Full set of pre-built settings templates for ease-of-use. No compression knowledge needed
Support for up to 24 channels of audio	■	■	■	Channel mapping filter for 24 channels included
Fully configurable advanced preprocessing filters	■	■	■	Video: black and white restoration, HSV and gamma correction, noise removal, image sharpening. Audio: Including normalize, balance fade in/out
Powerful preview	■	■	■	Before/after comparison
Bumpers and trailers	■	■	■	Add intro and outro movies to your content
Picture-in-Picture	■	■	■	Add a picture, animation or a movie as a watermark
2-pass encoding	■	■	■	For maximum quality (H.264, WMV, MPEG2/4, H.263)
Support for metadata	■	■	■	Add copyright and file info
Closed captions	■	■	■	Import and Pass-through of CEA-608 and CEA-708 in ATSC A/53, SCTE-20 and VBI in-band Close Captions when encoding MPEG-2 video; conversion of NTSC-CC types including VBI in-band to CEA-608 or SCTE-20. H.264 and MXF captions
Support for .SCC and .MCC closed caption files	■	■	■	
Support for alpha channels	■	■	■	Transparency, blue/green screen and Flash encoding
Advanced standard conversions	■	■	■	Comparable to hardware
Advanced deinterlace filters	■	■	■	Produce the best possible progressive output even when the source material has been edited and cut
Full field order handling	■	■	■	Change field dominance
Hinting (streaming)	■	■	■	According to IETF, ISMA and 3GPP
Automatic input format detection	■	■	■	Video codec, audio codec, color sampling, frame rate, pixel aspect, audio sampling
Resizing and resampling algorithms	■	■	■	Give the best quality for small-screen, low-bandwidth display devices and when upscaling from SD to HD
Frame-rate conversion	■	■	■	NTSC to/from PAL; 3:2 pulldown, 2:3 pulldown
Inverse telecine	■	■	■	Even when the source material has been edited and cut
Transcode while ingest	■	■	■	
Unlimited batch processing	■	■	■	Prioritize encoding and add files and settings to the batch while running; create bookmarks to source folders
Support for surround sound encoding 5.1, 7.1	■	■	■	Transport Streams and more
Parallel encoding, number of jobs:	1	2	**	Speeds up encoding by allowing multiple jobs to be processed in parallel
Professional format support		■	■	MXF, GXF, IMX, AVC-Intra, MPEG-2/-4 Transport Streams, DNxHD, DNxHR, JPEG2000 and more
Split-and-Stitch® distributed encoding			■	Enables distributed and segmented encoding
Pro Audio option	■	■	■	Separate purchase option that adds support for Dolby AC3, AAC-HE, AAC-LC, and AMR audio codecs
EDL conforming			■	

\*ProRes encoding supported on all Mac versions and all Episode Engine for Windows on Windows Server 2012.

\*\*Unlimited

\*\*\*Optional

