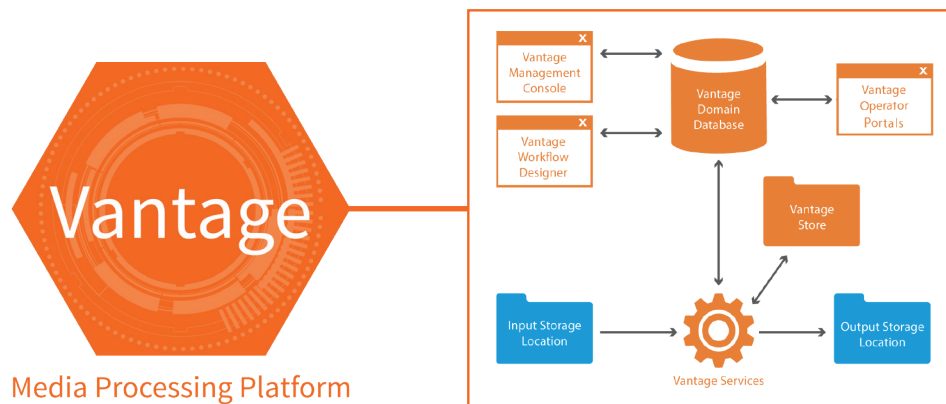


Vantage Domain Management Options

Product Sheet



Complete workflow management

Total visibility and control of the workflow,
for management of large-scale system deployments

Telestream Vantage® Domain Management Options provides total visibility and system management for large-scale media processing environments. Domain management options include the [Web-Based System Dashboard](#) and the [Reporting and Analytics](#) options.

As media companies generate increasing revenue through file-based workflows, they cannot afford interruptions or inefficiencies in their media processing. In large-scale media processing environments, the ability to visualize the health of participating systems is necessary for administrators to ensure that the workflow is operating smoothly. Overall system health is especially important in mission-critical commercial workflows, time-critical news workflows, and high-volume content repurposing environments. So much content is moving through these facilities that any workflow interruptions or inefficiencies would cause serious delays.

Web-based System Dashboards (Requires the [Vantage System Dashboard](#) options)

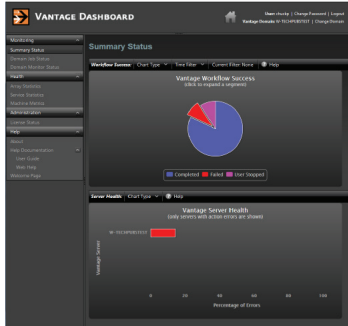
Today's large-scale video workflows typically involve two or more servers working in a cluster to perform media processing tasks. As system size increases, the task of watching multiple servers, multiple processes, and multiple 3rd-party systems becomes exponentially difficult. Tracking system health becomes very important, and system administrators must not only be able to log into each system remotely to correct errors, but use system metrics to predict potential system failures.

Vantage provides web-based dashboards specifically designed for managing large-scale video workflows. System health indicators summarize system performance and health statistics, and provide diagnostic tools to isolate and recover system inefficiencies. Statistics such as server queue length, processing load, and average percentage of errors allow administrators to detect servers which may be having trouble.

This allows you to proactively take steps to avoid system failures. Snapshot summary information allows system monitoring from across the room, allowing you to comfortably track system health from a central location.

Historical Job Reporting

(Requires the Vantage Reporting and Analytics option)
Historical reporting of system capacity utilization, overall usage and throughput, distribution statistics and other measurements are essential for effective billing, capacity planning, and predictive maintenance. Vantage exports detailed job history, allowing for analysis of job metrics and metadata. Customer billing IDs may be attached to jobs and made available as part of a report. Job timing can be exported into spreadsheet software or custom reporting tools to determine average wait times, and for capacity planning.



Workflow Analytics

(Requires the Vantage Reporting and Analytics option)
With Vantage decision-making, one workflow may service multiple clients, multiple distribution channels and multiple media types. But which clients are the heaviest users? Which distribution channels are sent to the most? In sophisticated workflows, this type of analysis can provide valuable insights into workflow optimization. Vantage Domain Management Options includes tools for analyzing workflow process utilization. Bottleneck analysis analyzes job history, presents the average times for each task in the process, and visually indicates the slowest steps in a workflow. Workflow execution analysis indicates which branches in a process are most commonly executed, indicating which clients, formats, and decisions are the most common.

Real-time execution analysis also provides a single view of batch jobs, showing aggregate progress visually as they complete the workflow.

Combining visual workflow design and powerful analysis tools, Vantage offers visibility into the true nature of the workflow.

Best in Class Customer Support

You can rest assured that our highly-skilled technical team will be available to provide the quick and comprehensive support and guidance you need to fully leverage the power of your Telestream product.

Technical Specifications

What's Included

Vantage System Dashboard Option

- System health summary status for centralized or remote monitoring
- Ability to view and analyze statistics for each server in the system
- Remote job status monitoring

Vantage Reporting and Analytics Option

- Export job history reports in CSV format for import into Excel or other spreadsheet software
- Review job metadata and execution times for capacity planning and client or departmental billing
- Create daily, weekly or monthly CSV and TXT job reports automatically as jobs run, with one line per job including timing and metadata
- Create a PDF report for each job including any variable within the job
- Visual workflow bottleneck analysis tools
- Real-time and historical workflow execution visualization

System Requirements

Vantage:

Operating System: Windows Server 2012 R1 and R2, or Server 2016 (Standard or Data Center Edition)

Minimum Server: Dual, Six Core Processors - or better (a total of 12 cores or more is recommended), with 16 GB DDR Memory

Recommended Server: Telestream Lightspeed Server with GPU acceleration; High-Speed NAS or SAN storage recommended; GigE Ethernet adapter

SQL Database Dedicated Server:

Operating System: Windows Server 2012 R1 and R2, or Server 2016 (Standard or Data Center Edition)

Minimum Server: Four Core Processor - or better with 16 GB DDR required memory. 32 GB DDR is recommended for Domains with high job volume.

Database: SQL 2012, SQL 2014 Standard or Enterprise, SQL 2016 Standard or Enterprise, SQL Express 2016

Client OSs: Windows 10, Windows 7, 8, Server 2012 R1 and R2, or Server 2016 (Standard or Data Center Edition)

¹SQL enterprise installation may require Professional Services, contact Telestream for details.

