

Deploy Operator User Interfaces in Minutes with Vantage Workflow Portal



Today's video operations frequently require some form of operator interaction as videos are processed through a workflow. Common operator tasks may include metadata entry, review and approval, content routing, simple tagging or video stitching. However, designing and deploying operator user interfaces – even for simple tasks – can be costly and time-consuming. In today's dynamic video environments, administrators need to be able to satisfy their workflow needs in minutes, not months.

Telestream Vantage® Workflow Portal allows media workflow administrators to quickly design and deploy user interfaces for operator metadata entry, content browsing, stitching, and job submission. Administrators design the task that the operator will perform, and design the back-end process that will fulfill the operator input. Operators can then use the Vantage Workflow Portal client application to access their tasks and submit jobs.

Simplify your Operator Environment

Vantage Workflow Portal eliminates the need for complicated edit systems, XML file editors, or web engineering to enable simple operator tasks.

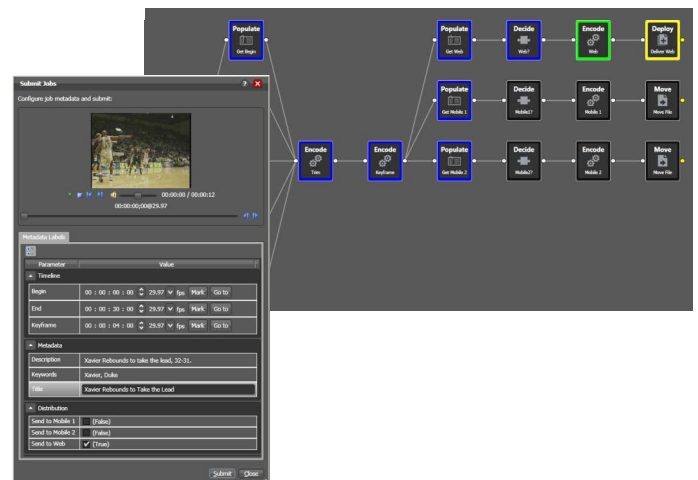
Within a Vantage Workflow Portal deployment, administrators can:

- Choose which videos in the workflow the operator can see
- Design the operator task
- Automate the process that fulfills the operator's input

Powerful, Data-Driven Process Design

At the heart of Vantage Workflow Portal is the Vantage workflow designer, which allows administrators to design and automate the media workflow that responds to operator input.

Vantage workflows can include decision-making rules which automatically respond to incoming metadata. For example, if an operator selects checkboxes indicating the choice of media distribution channel, Vantage can respond to those checkboxes (as designed by the administrator), triggering the appropriate actions as necessary. A visual job history also shows the administrator which choices were made in each job.



Vantage also allows metadata fields to be fed directly into processing steps. For example, an operator might specify a timecode value used as a trim point; alternatively he/she might specify the location of a QuickTime file to be used as a bumper. The administrator designs the operator metadata label, and then designs how the fields in that label map into the Vantage workflow – directly into encoding parameters, web service calls, or any of the thousands of fields in Vantage that allow data binding. This allows the administrator a great deal of power in both workflow and operator task design, with the two working hand-in-hand to process media efficiently.

Example Applications

Some example operator tasks that can be designed and deployed by administrators include:

Highlight extraction from archive files: The operator marks the in and out timecodes on the timeline and chooses the timecode for a thumbnail.

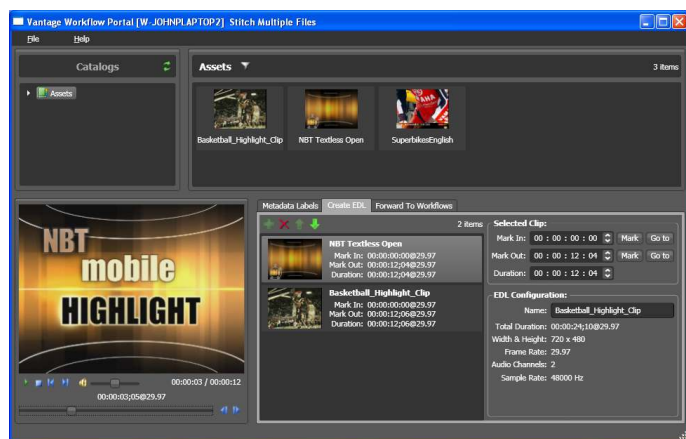
Promo Preparation: The operator marks the voiceover and graphics entry points on the timeline. Vantage then automatically repurposes the promo for multiple markets, days, and languages based upon this simple input.

Review and Approval: The operator reviews a proxy of the clip and either marks the clip as accepted or rejected.

VOD Distribution: The operator creates a playlist of clips, and enters metadata. Vantage collapses the clips into a single output media file and transforms the metadata for distribution.

Customizable Operator Experience

Administrators can design their own metadata schemes, including how parameters are categorized and displayed to the operator. For example, an administrator might have three checkboxes (one for each distribution channel), a string, a drop-down list of ratings, and two timecodes indicating the start and end of trim points. The administrator also builds a workflow around the metadata label, enabling the operator to drive downstream processing through simple data entry.



Specifications and pricing subject to change without notice. Copyright © 2011 Telestream, Inc. Telestream and Vantage are registered trademarks of Telestream, Inc. All other trademarks are property of their respective owners.

July 2011

Through this data entry, operators can:

Mark timecode points on the video timeline: These points can then be used for clip trimming, stitching, graphics insertion or overlays, key frame generation, metadata file generation, and more.

Select checkboxes: These checkboxes can indicate which parts of the processing workflow should run. This in turn allows the operator to choose distribution channels, target customers, encoding profiles, application of bumpers/trailers, or the execution of virtually any other workflow branch.

Enter text, numbers or choose from drop-downs: Text and numbers can be used for decision-making, can feed character generation to burn text directly into the video, can be used for file naming, or as a feed for virtually any text- or number-based workflow parameter.

Browse for files: These files can be used as overlays, as bumpers or trailers, as caption files, subtitle files, as metadata input, and more.

Watch Media Processing and Delivery

Track media processing and delivery in Vantage's unique Job Status view, which gives a visual representation of each workflow. Failed deliveries can be restarted without requiring that the job be completely restarted. Administrators can view global status in a dashboard view, seeing all failures and active jobs at a glance.

Enhance your Workflow

Add Vantage Analysis to incorporate quality control steps at any point in the workflow, testing for both source and output video quality, and allowing operators to review errors.

Add Vantage Transcode Pro to allow the creation of virtually any file format, including edit, broadcast, cable, mobile and web video file formats.

Add Vantage Team Management to enable user accounts and the ability to deploy custom job status views.

Scalable, enterprise-class software

Vantage Workflow Portal runs on Windows 7, Vista, XP SP3, Server 2008 or 2003. Actual processing of media and metadata is performed on one or multiple load-balanced servers providing high-volume processing and throughput. Vantage Workflow Portal communicates with these servers through the Vantage database. This allows operators to perform their tasks quickly, while "behind the scenes" processing can scale with full redundancy, 24/7 reliability and auto-failover. It also allows hundreds of Portal applications to submit jobs through the database, providing a truly scalable operating environment.

Best in class customer support

You can rest assured that our highly-skilled technical team will be available to provide the quick and comprehensive support and guidance you need to fully leverage the power of your Telestream product.