



A New Generation Encoder

Quality, speed, formats & scalability



Telestream Episode® version 6 is an all-in-one, multiformat encoding application designed for post production and new media workflows. It's the only cross-platform, multiformat software encoder on the market that scales from a desktop to a workgroup cluster. Episode accepts and transcodes more video and audio file formats than any other encoder in its class.

Pristine picture quality

Best-in-class video processing, full 10-bit support and fine-tuning compression capabilities combine to allow you to generate excellent picture quality. Bumpers, trailers and watermarks can also be added to enhance and protect the video content.

Hands-on control

The ability to fine-tune the video, with frame-by-frame video preview capability, puts you in complete control of the encoding process. Instant feedback allows you to quickly and easily adjust your encoding and preprocessing settings.

Easy to use and automate

The intuitive drag-and-drop graphical user interface and workflow builder simplifies the encoding process and helps identify functions being performed and the status of work in progress. Simply select encoding settings, add your videos to a batch or watch folder, select the destination for your encoded video, and you're done. Episode can upload your files to a local folder, FTP server, SMB share, or automatically publish to YouTube.

The Best Encoding Value

With prices starting at \$495 Episode is the future-proof solution that offers extensive support for current and emerging video and audio file formats,

including Flash 9 and Flash 8 (VP6s, VP6e), Windows Media, H.264, WebM, MPEG-1/-2/-4, VC-1, DV, 3GPP/2, M4A, MXF, GXF, AVC-Intra, MOV, other QuickTime codecs and more.

In addition to the extensive format support offered in the base model, Episode also enables full clustering capabilities and the ability to scale up to higher models for more formats and increased performance.

One-click clustering and scalability

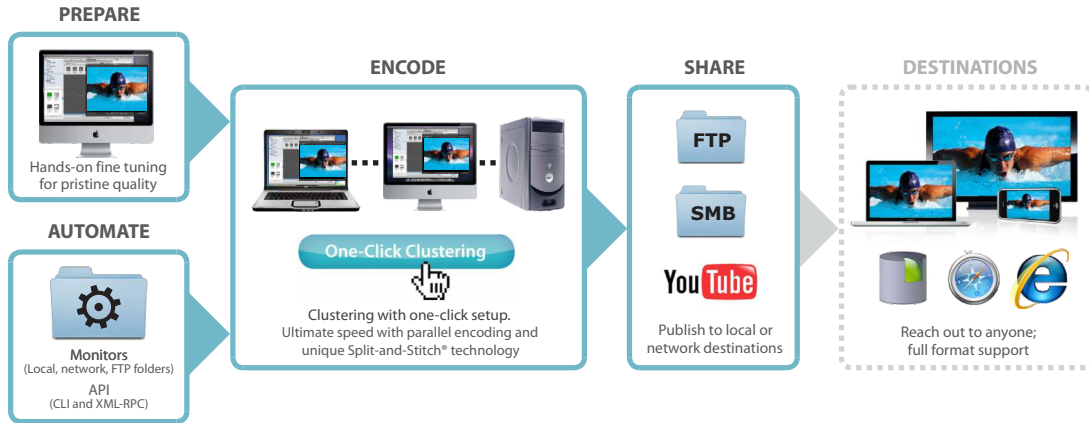
In creative environments, you and your team need to keep work flowing at maximum speed to meet tight deadlines. An industry-first capability, exclusive one-click clustering with built-in file sharing, enables you to join a cluster or designate other computers to run your encoding jobs.

Clusters, which can be comprised of a mix of Mac & PC systems, are easy for anyone to set up and join without the need for IT assistance. As your workload grows, simply add machines to your cluster to speed up the encoding. This allows you to take full advantage of the processing power of idle computers, thus maximizing hardware investment.

Speed up with Split-and-Stitch®

Split-and-Stitch technology, available in Episode Engine, enables distributed and segmented encoding, taking advantage of all available CPU power, whether on a single machine or across a cluster of machines, to achieve truly remarkable encoding speeds.

Episode Pro and Episode Engine also allow for parallel encoding. By encoding multiple files at a time, Episode allows you to leverage the power of a single multi-core workstation or cluster in workflows involving many individual encodes.



Features	Episode	Episode Pro	Episode Engine	Comments
Extensive format support up to HD resolutions for new media, web, post-production, DVD/Blu-ray and more	X	X	X	MPEG-1/-2/-4, WMV9, VC-1, DV, WebM, 3GPP/3GPP2, M4A, MOV, ProRes*, other QuickTime codecs and more. Optimized Flash 8+9 support.
Graphical workflow builder	X	X	X	Drag-and-drop interface makes building encoding workflows simple.
One-Click Clustering with built-in file sharing	X	X	X	Allows any computer on the network, Mac or PC, to automatically join a transcoding cluster, with simply a click, for maximum flexibility and full scalability.
Monitors	X	X	X	Monitor local, network, or FTP folders for fully automated workflows
Automatic file deployment	X	X	X	Automatically deliver encoded files to local folders, network shares, FTP servers, and YouTube
Command Line Interface	X	X	X	Enabling custom integrations
XML-RPC interface			X	Enabling control over IP networks
Full 4:2:2:4 and 4:2:0 support, 10 bit 4:4:4:4 for pro formats	X	X	X	For optimized picture quality.
Choose from many professional templates or flexible custom settings	X	X	X	Full set of pre-built settings templates for ease-of-use. No compression knowledge needed.
Support for up to 24 channels of audio	X	X	X	Channel mapping filter for 24 channels included.
Fully configurable advanced preprocessing filters	X	X	X	Video: black and white restoration, HSV and gamma correction, noise removal, image sharpening. Audio: Including normalize, balance, fade in/out.
Powerful preview	X	X	X	Before/after comparison
Bumpers and trailers	X	X	X	Add intro and outro movies to your content.
Picture-in-Picture	X	X	X	Add a picture, animation or a movie as a watermark.
2-pass encoding	X	X	X	For maximum quality (H.264, WMV, MPEG2/4, H.263)
Support for metadata	X	X	X	Add copyright and file info
Closed captions	X	X	X	Pass-through of EIA-608 and eIA-708 in ATSC A/53, SCTE-20 and VBI in-band Close Captions when encoding MPEG-2 video; conversion of NTSC-CC types including VBI in-band to EIA-608 or SCTE-20
Support for alpha channels	X	X	X	Transparency, blue/green screen and Flash encoding
Advanced standard conversions	X	X	X	Comparable to hardware
Advanced deinterlace filters	X	X	X	Produce the best possible progressive output even when the source material has been edited and cut
Full field order handling	X	X	X	Change field dominance
Hinting (streaming)	X	X	X	According to IETF, ISMA and 3GPP
Automatic input format detection	X	X	X	Video codec, audio codec, color sampling, frame rate, pixel aspect, audio sampling
Resizing and resampling algorithms	X	X	X	Give the best quality for small-screen, low-bandwidth display devices and when upscaling from SD to HD.
Frame-rate conversion	X	X	X	NTSC to/from PAL; 3:2 pulldown, 2:3 pulldown
Inverse telecine	X	X	X	Even when the source material has been edited and cut
Transcode while ingest	X	X	X	With Telestream Pipeline
Unlimited batch processing	X	X	X	Prioritize encoding and add files and settings to the batch while running; create bookmarks to source folders.
Support for surround sound encoding 5.1, 7.1	X	X	X	Transport Streams and more.
Parallel encoding, number of jobs:	1	2	Unlimited	Speeds up encoding by allowing multiple jobs to be processed in parallel.
Professional format support		X	X	MXF, GXF, IMX, AVC-Intra, MPEG-2/-4 Transport Streams, and more.
Split-and-Stitch® distributed encoding			X	Enables distributed and segmented encoding.
Pro Audio option	X	X	X	Separate purchase option that adds support for Dolby ACE, AAC-HE, AAC-LC, and AMR audio codecs
EDL conforming			X	
Episode Developer API Kit Option			Optional	Enables distributed and segmented encoding.

* ProRes encoding supported on all Mac versions and on Episode Engine for Windows on Windows Server 2008.