



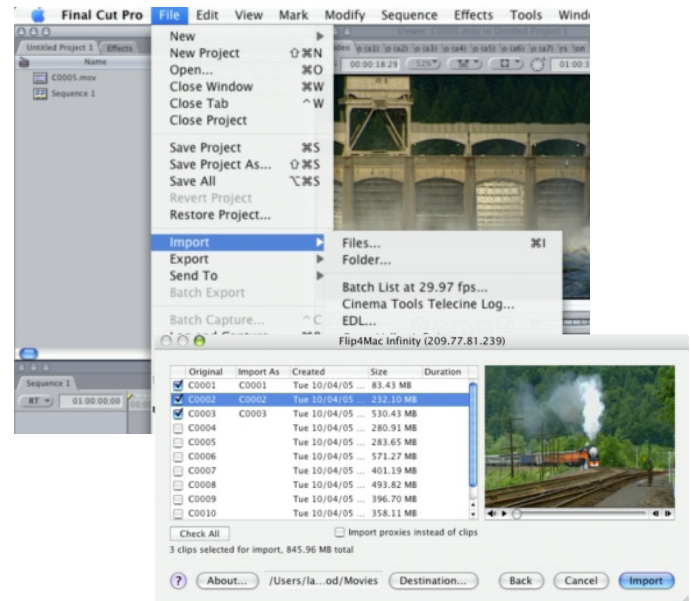
Infinity Component for Final Cut Pro

- Import from Grass Valley Infinity Series Digital Media Camcorder and REV PRO drives
- Edit DV or native IMX MPEG media on your Mac

Now Macintosh users can benefit from an all-digital, file-based media workflow. Import MXF-based media from Grass Valley Infinity Series Digital Media Camcorder directly to Apple Final Cut Pro 5 real-time editing software – using the new Flip4Mac Infinity Component.

Flip4Mac Infinity Component imports DV25 media directly from Grass Valley REV PRO drives without transcoding the media file. Flip4Mac Infinity Import Component produces a .mov file that is placed right into your project bin. Simply drag and drop the clip on your timeline, and you are ready to edit.

With the Flip4Mac Infinity Component, Mac users can import and browse REV PRO drives for quick, easy access – without going to baseband video. This means a faster, more efficient, file-based workflow that provides greater efficiency and productivity for you.



Flip4Mac Infinity Component Features

- Import HD, MPEG-2 I-frame, 1080i and 720p
- Import HD 1920 x 1080i 50/60, 24 bit media
- Import HD 720p 50/60 media
- Import DV25 media
- Export MPEG2 IMX 30, 40, 50 media
- File transfer via USB 2.0 and IEEE 1394 connections

Supported Digital Acquisition Hcc`g

- Grass Valley Infinity Series Digital Media Camcorder via REV PRO drives

System Requirements

- Mac OS X 10.5 or later (10.4 users should run Infinity v2.2.2)
- Final Cut Pro 5.1 or later
- QuickTime 7.0 or later



Specifications subject to change without notice. Copyright © 2009 Telestream, Inc. Telestream and Flip4Mac are registered trademarks of Telestream, Inc. All other trademarks are the property of their respective owners.
January 2010

www.telestream.net
info@telestream.net
Nevada City, CA USA
tel +1 530 470 1300