



ScreenFlow 4.5

Tutorial

Copyrights and Trademark Notices

Copyright © 2014 Telestream, Inc. All rights reserved worldwide. No part of this publication may be reproduced, transmitted, transcribed, altered, or translated into any languages without the written permission of Telestream. Information and specifications in this document are subject to change without notice and do not represent a commitment on the part of Telestream.

Telestream, Flip4Mac, FlipFactory, Episode, Telestream MAP, MetaFlip, GraphicsFactory, MotionResolve, ScreenFlow, and Split-and-Stitch are registered trademarks and Pipeline, Launch, Wirecast, Videocue, Drive-in, and Vantage are trademarks of Telestream, Inc.

QuickTime, Mac OS X, and Safari are trademarks of Apple, Inc. Bonjour, the Bonjour logo, and the Bonjour symbol are trademarks of Apple, Inc.

Microsoft, Windows Media Technologies and Silverlight are trademarks of Microsoft Corporation.

THIS SOFTWARE IS PROVIDED BY THE COPYRIGHT HOLDERS AND CONTRIBUTORS "AS IS" AND ANY EXPRESS OR IMPLIED WARRANTIES, INCLUDING, BUT NOT LIMITED TO, THE IMPLIED WARRANTIES OF MERCHANTABILITY AND FITNESS FOR A PARTICULAR PURPOSE ARE DISCLAIMED. IN NO EVENT SHALL THE COPYRIGHT OWNER OR CONTRIBUTORS BE LIABLE FOR ANY DIRECT, INDIRECT, INCIDENTAL, SPECIAL, EXEMPLARY, OR CONSEQUENTIAL DAMAGES (INCLUDING, BUT NOT LIMITED TO, PROCUREMENT OF SUBSTITUTE GOODS OR SERVICES; LOSS OF USE, DATA, OR PROFITS; OR BUSINESS INTERRUPTION) HOWEVER CAUSED AND ON ANY THEORY OF LIABILITY, WHETHER IN CONTRACT, STRICT LIABILITY, OR TORT (INCLUDING NEGLIGENCE OR OTHERWISE) ARISING IN ANY WAY OUT OF THE USE OF THIS SOFTWARE, EVEN IF ADVISED OF THE POSSIBILITY OF SUCH DAMAGE.

Other brands, product names, and company names are trademarks of their respective holders, and are used for identification purpose only.

AudioRestore, iZotope®; ©2011 iZotope, Inc. All Rights Reserved.

Sparkle, copyright (c) 2006 Andy Matuschak.

Permission is hereby granted, free of charge, to any person obtaining a copy of this software and associated documentation files (the "Software"), to deal in the Software without restriction, including without limitation the rights to use, copy, modify, merge, publish, distribute, sublicense, and/or sell copies of the Software, and to permit persons to whom the Software is furnished to do so, subject to the following conditions:

The above copyright notice and this permission notice shall be included in all copies or substantial portions of the Software.

THE SOFTWARE IS PROVIDED "AS IS", WITHOUT WARRANTY OF ANY KIND, EXPRESS OR IMPLIED, INCLUDING BUT NOT LIMITED TO THE WARRANTIES OF MERCHANTABILITY, FITNESS FOR A PARTICULAR PURPOSE AND NONINFRINGEMENT. IN NO EVENT SHALL THE AUTHORS OR COPYRIGHT HOLDERS BE LIABLE FOR ANY CLAIM, DAMAGES OR OTHER LIABILITY, WHETHER IN AN ACTION OF CONTRACT, TORT OR OTHERWISE,

ARISING FROM, OUT OF OR IN CONNECTION WITH THE SOFTWARE OR THE USE OR OTHER DEALINGS IN THE SOFTWARE.

RSS reader class, copyright (c) 2002, Brent Simmons. All rights reserved.

Redistribution and use in source and binary forms, with or without modification, are permitted provided that the following conditions are met:

Redistributions of source code must retain the above copyright notice, this list of conditions and the following disclaimer.

Redistributions in binary form must reproduce the above copyright notice, this list of conditions and the following disclaimer in the documentation and/or other materials provided with the distribution.

Neither the name of ranchero.com or Brent Simmons nor the names of its contributors may be used to endorse or promote products derived from this software without specific prior written permission.

THIS SOFTWARE IS PROVIDED BY THE COPYRIGHT HOLDERS AND CONTRIBUTORS "AS IS" AND ANY EXPRESS OR IMPLIED WARRANTIES, INCLUDING, BUT NOT LIMITED TO, THE IMPLIED WARRANTIES OF MERCHANTABILITY AND FITNESS FOR A PARTICULAR PURPOSE ARE DISCLAIMED. IN NO EVENT SHALL THE COPYRIGHT OWNER OR CONTRIBUTORS BE LIABLE FOR ANY DIRECT, INDIRECT, INCIDENTAL, SPECIAL, EXEMPLARY, OR CONSEQUENTIAL DAMAGES (INCLUDING, BUT NOT LIMITED TO, PROCUREMENT OF SUBSTITUTE GOODS OR SERVICES; LOSS OF USE, DATA, OR PROFITS; OR BUSINESS INTERRUPTION) HOWEVER CAUSED AND ON ANY THEORY OF LIABILITY, WHETHER IN CONTRACT, STRICT LIABILITY, OR TORT (INCLUDING NEGLIGENCE OR OTHERWISE) ARISING IN ANY WAY OUT OF THE USE OF THIS SOFTWARE, EVEN IF ADVISED OF THE POSSIBILITY OF SUCH DAMAGE.

This project uses software developed by the OpenSSL Project for use in the OpenSSL Toolkit (<http://www.openssl.org>). This toolkit is licensed as follows:

Copyright (c) 1998-2005 The OpenSSL Project. All rights reserved.

Redistribution and use in source and binary forms, with or without modification, are permitted provided that the following conditions are met:

1. Redistributions of source code must retain the above copyright notice, this list of conditions and the following disclaimer.
2. Redistributions in binary form must reproduce the above copyright notice, this list of conditions and the following disclaimer in the documentation and/or other materials provided with the distribution.
3. All advertising materials mentioning features or use of this software must display the following acknowledgment: "This product includes software developed by the OpenSSL Project for use in the OpenSSL Toolkit. (<http://www.openssl.org/>)"
4. The names "OpenSSL Toolkit" and "OpenSSL Project" must not be used to endorse or promote products derived from this software without prior written permission. For written permission, please contact: openssl-core@openssl.org.

5. Products derived from this software may not be called "OpenSSL" nor may "OpenSSL" appear in their names without prior written permission of the OpenSSL Project.

6. Redistributions of any form whatsoever must retain the following acknowledgment: "This product includes software developed by the OpenSSL Project for use in the OpenSSL Toolkit (<http://www.openssl.org/>)"

THIS SOFTWARE IS PROVIDED BY THE OpenSSL PROJECT "AS IS" AND ANY EXPRESSED OR IMPLIED WARRANTIES, INCLUDING, BUT NOT LIMITED TO, THE IMPLIED WARRANTIES OF MERCHANTABILITY AND FITNESS FOR A PARTICULAR PURPOSE ARE DISCLAIMED. IN NO EVENT SHALL THE OpenSSL PROJECT OR ITS CONTRIBUTORS BE LIABLE FOR ANY DIRECT, INDIRECT, INCIDENTAL, SPECIAL, EXEMPLARY, OR CONSEQUENTIAL DAMAGES (INCLUDING, BUT NOT LIMITED TO, PROCUREMENT OF SUBSTITUTE GOODS OR SERVICES; LOSS OF USE, DATA, OR PROFITS; OR BUSINESS INTERRUPTION) HOWEVER CAUSED AND ON ANY THEORY OF LIABILITY, WHETHER IN CONTRACT, STRICT LIABILITY, OR TORT (INCLUDING NEGLIGENCE OR OTHERWISE) ARISING IN ANY WAY OUT OF THE USE OF THIS SOFTWARE, EVEN IF ADVISED OF THE POSSIBILITY OF SUCH DAMAGE.

This product includes cryptographic software written by Eric Young (eay@cryptsoft.com). This product includes software written by Tim Hudson (tjh@cryptsoft.com).

ShortcutRecorder, copyright 2006-2007 Contributors. All rights reserved.

License: BSD

Jesper, waffle software, <wootest+shortcutrecorder@gmail.com>

David Dauer, <david@daviddauer.de>

Jamie Kirkpatrick, Kirk Consulting Ltd, <jkp@kirkconsulting.co.uk>

CTGradient, v 1.5, copyright (c) 2006 Cotigent.

Created by Chad Weider on 12/3/05.

Some rights reserved: <http://creativecommons.org/licenses/by/2.5/>

Limited Warranty and Disclaimers

Telestream, Inc. (the Company) warrants to the original registered end user that the product will perform as stated below for a period of one (1) year from the date of shipment from factory:

Hardware and Media—The Product hardware components, if any, including equipment supplied but not manufactured by the Company but NOT including any third party equipment that has been substituted by the Distributor for such equipment (the “Hardware”), is free from defects in materials and workmanship under normal operating conditions and use.

Software—If software is supplied as part of the product, the software will operate in substantial conformance with specifications set forth in its product user's guide. The Company does not warrant that the software will operate uninterrupted or error-free, will meet your requirements, or that software errors will be corrected.

Warranty Remedies

Your sole remedies under this limited warranty are as follows:

Hardware and Media—The Company will either repair or replace (at its option) any defective Hardware component or part, or Software Media, with new or like new Hardware components or Software Media. Components may not be necessarily the same, but will be of equivalent operation and quality.

Software—If software is supplied as part of the product and it fails to substantially confirm to its specifications as stated in the product user's guide, the Company shall, at its own expense, use its best efforts to correct (with due allowance made for the nature and complexity of the problem) such defect, error or nonconformity.

Software Updates—If software is supplied as part of the product, the Company will supply the registered purchaser/licensee with maintenance releases of the Company's proprietary Software Version Release in manufacture at the time of license for a period of one year from the date of license or until such time as the Company issues a new Version Release of the Software, whichever first occurs. To clarify the difference between a Software Version Release and a maintenance release, a maintenance release generally corrects minor operational deficiencies (previously non-implemented features and software errors) contained in the Software, whereas a Software Version Release adds new features and functionality. The Company shall have no obligation to supply you with any new Software Version Release of Telestream software or third party software during the warranty period, other than maintenance releases.

Restrictions and Conditions of Limited Warranty

This Limited Warranty will be void and of no force and effect if (i) Product Hardware or Software Media, or any part thereof, is damaged due to abuse, misuse, alteration, neglect, or shipping, or as a result of service or modification by a party other than the Company, or (ii) Software is modified without the written consent of the Company.

Limitations of Warranties

THE EXPRESS WARRANTIES SET FORTH IN THIS AGREEMENT ARE IN LIEU OF ALL OTHER WARRANTIES, EXPRESS OR IMPLIED, INCLUDING, WITHOUT LIMITATION, ANY WARRANTIES OF MERCHANTABILITY OR FITNESS FOR A PARTICULAR PURPOSE. No oral or written information or advice given by the Company, its distributors, dealers or agents, shall increase the scope of this Limited Warranty or create any new warranties.

Geographical Limitation of Warranty—This limited warranty is valid only within the country in which the Product is purchased/licensed.

Limitations on Remedies—YOUR EXCLUSIVE REMEDIES, AND THE ENTIRE LIABILITY OF TELESTREAM, INC. WITH RESPECT TO THE PRODUCT, SHALL BE AS STATED IN THIS LIMITED WARRANTY. Your sole and exclusive remedy for any and all breaches of any Limited Warranty by the Company shall be the recovery of reasonable damages which, in the aggregate, shall not exceed the total amount of the combined license fee and purchase price paid by you for the Product.

Damages

TELESTREAM, INC. SHALL NOT BE LIABLE TO YOU FOR ANY DAMAGES, INCLUDING ANY LOST PROFITS, LOST SAVINGS, OR OTHER INCIDENTAL OR CONSEQUENTIAL DAMAGES ARISING OUT OF YOUR USE OR INABILITY TO USE THE PRODUCT, OR THE BREACH OF ANY EXPRESS OR IMPLIED WARRANTY, EVEN IF THE COMPANY HAS BEEN ADVISED OF THE POSSIBILITY OF THOSE DAMAGES, OR ANY REMEDY PROVIDED FAILS OF ITS ESSENTIAL PURPOSE.

Further information regarding this limited warranty may be obtained by writing:

Telestream, Inc.
848 Gold Flat Road
Nevada City, CA 95959

You can call Telestream, Inc. via telephone at (530) 470-1300.

Part Number: 127976

Publication Date: April, 2014

Getting Started

These tours are designed to introduce you to the capabilities and significant features of ScreenFlow.

We encourage you to take these tours before beginning a screencast or other ScreenFlow project. They help you to gain a basic understanding of how ScreenFlow works and help to familiarize yourself with the program.

The creation of a ScreenFlow screencast is a three step process: first you record your video, next you edit your screencast project, and finally you export your screencast to a video file or publish it directly to an Internet video service such as YouTube and others.

For video tutorials, please visit our [ScreenFlow demos page](#).

- [Tour 1—Recording With ScreenFlow](#)
- [Tour 2—Editing Your Screencast](#)
- [Tour 3—Publishing Your Screencast](#)

Tour 1—Recording With ScreenFlow

This first tour focuses on creating a high quality recording for editing and publishing. When creating a screencast, it is important to prepare your recording properly while considering how you intend to use this screencast.

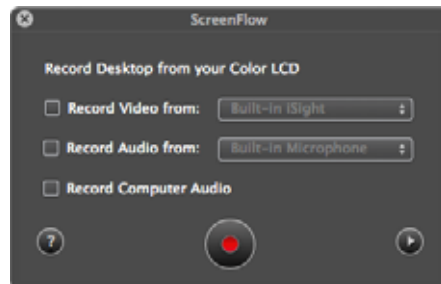
We recommend that you record a few sample screencasts to familiarize yourself with ScreenFlow and its options, before creating a screencast for publication.

To record a screencast with ScreenFlow, follow these basic steps:

1. Open your Applications folder.
2. Drag ScreenFlow onto your dock bar.
3. Double-click the ScreenFlow icon to launch the application.

When you launch ScreenFlow, it displays a Configure Recording window.

Figure 1. Screenflow Recording Window



If you're ready to start recording, you check the options you want enabled, and click the red Record button.

Before you create your first screencast, take a moment to consider ways of approaching the process.

Configuring Your Recording

Use the Configure Recording window to specify your recording sources. This automatically opens when you launch the application, but it can also be accessed from ScreenFlow Helper > Configure Recording... or File > New Recording.

Record Desktop from. This option records your computer display. This source records by default and cannot be deselected. If you have multiple displays connected, you can choose between them. ScreenFlow cannot record multiple displays simultaneously.

Record Video from. This option records video from any camera connected to your computer. Use the popup menu to choose from multiple cameras. Upon selecting a source, a preview image displays below.

Record Audio from. This option records from any microphone connected to your computer. Use the popup menu to choose from multiple microphones. Upon selecting the source, the volume level is displayed below.

Record Computer Audio. Choose this option to record all sounds played through your computer. The ScreenFlow audio driver must be installed to use this setting. If the driver is not installed, you are prompted to install it.

Beginning Your Recording

When you are ready, click the Record button. ScreenFlow enters a countdown mode before recording. You can change the length of this countdown (see [Using the Countdown Window](#)).

Create a short presentation then stop your recording: press Shift-Command-2 or select Stop Record from the ScreenFlow Helper menu in the upper-right corner of your display.

When you stop recording, ScreenFlow opens your recording in the ScreenFlow editing window with all of your recorded sources placed on the timeline.

Display video and computer audio are combined into one clip; camera video and microphone audio are combined in another clip, to maintain video/audio sync. Video and audio can be separated by selecting the clip and choosing Edit > Detach Audio.

Tour 2– Editing Your Screencast

The purpose of this tour is to familiarize you with the basic editing features of ScreenFlow. This tour describes some of the most common and basic editing techniques.

For a comprehensive description of editing features, see [Editing ScreenFlow Projects](#).

When you finish your recording, ScreenFlow creates a new document and recorded media is placed at the beginning of the timeline. The media elements on the timeline reference your project's stored media. Changes made on the timeline or on the canvas do not alter your original recording.

The Editing Window

The space used for editing is the editing window, which consists of three main parts: Canvas Control, Playback Controls, and Timeline area.

Figure 2. Editing Window



Canvas Controls

The large, central area of the editing window is called the canvas. This offers a preview of all visual elements in your project. The gray space around the preview is for elements that will not be present in your exported video. This is used to display off-screen

elements present in scaling and panning effects. The elements displayed on the canvas reflect the position of the scrubber on the timeline.

You can set the canvas size and background color using the canvas controls (see [Configuring the Canvas](#)).

Timeline Area

The wide area at the bottom of the screen is the timeline. This is a visual representation of the temporal length of your screencast. The scale at the top of the timeline represents measurements of time.

The red vertical line on the timeline is called the *scrubber*. This represents the current temporal position of the preview currently displayed on the canvas.

The timeline is divided into tracks to manage different clips overlapping at the same time. If the clip is visual (i.e. video, image, or text), the upper most track is displayed over the lower tracks.

Between the canvas and the timeline are playback controls which enable you to play your screencast and jump to the beginning or end of your video.

Properties

On the upper-right side of the editing window are the Properties tabs. These are the main editing controls of ScreenFlow and allow you to configure each clip in your screencast. It also includes the media library which stores all recorded and imported media in an unaltered state.

For more information, see the Properties topics in [Editing ScreenFlow Projects](#).

ScreenFlow provides two different types of cropping.

Figure 3. Canvas Controls





Canvas Cropping

Canvas cropping is used to change the resolution or aspect ratio of the workspace you have to edit in. This can be useful if you want to constrain your screencast to only a portion of the total recording (i.e. a foreground window).

Canvas cropping is accessible through the canvas control button. This is set by numerically entering the width and height values or dragging the edge of the canvas with your mouse cursor.

The canvas cannot be set to a value larger than the original recording. Remember, the canvas size represents your total usable display space, which converts to the frame size of your video when you export or publish it.

Image Cropping

To crop an image, select the video or still image on the canvas. Hold the Control key and drag the edge or handles of the image to crop it. Use the shift key to constrain the cropping action to the original ratio of the image.

Actions

Actions are property changes used to transition the media from one state to another. Actions are added to a clip by selecting the clip, opening the property that you want to alter, then clicking the Add Action button at the bottom of the properties pane. The action is placed in relation to the position of the scrubber, but can be moved on the clip. The duration of the action is changed by dragging the edge of the action to lengthen or shorten the action.

Figure 4. Video Properties Action



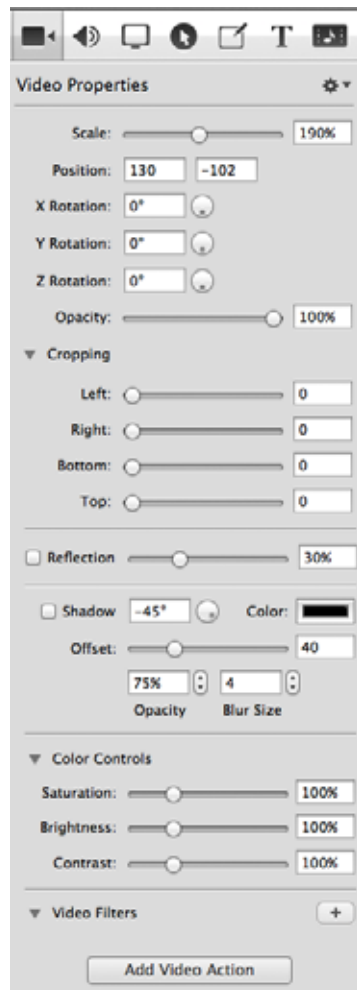
Place the scrubber before or after the action to make changes to the property relative to the action. When the scrubber is placed before the action, this sets the properties of the clip before the action. When the scrubber is placed after the action, this sets the properties of the clip after the action.

Video Properties

Video properties can be used to make changes to any recorded or imported video, video action, or image file. This includes both screen and camera recordings.

This tour focuses on the most common features. For more details, see [Configuring Video Properties](#).

Figure 5. Video Properties



Scale. Use this option to change the size of a video or image relative to the size of the canvas. This can be used for highlighting a particular portion of the screen or with a video action to create a zoom effect.

Use the slider or enter a percentage value to change the image scale.

Position. Position represents the location of your video or image on the canvas. The position is based on the exact placement of the center of your image. Values in the position field are represented in pixels.

You can reposition the image by dragging the image on the canvas, nudging the image with the arrow keys, or entering a numerical value in the position fields.

Opacity. This is the degree to which the image is translucent. The greater the value, the more opaque the image. If the value is set to zero, the image is invisible.

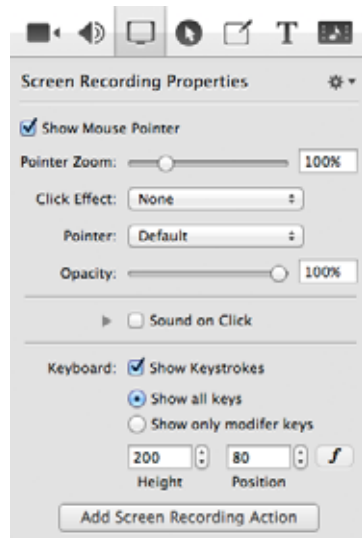
This is used with a video action to fade an image in or out. It is particularly useful if you would like to periodically display your camera recording.

Screen Recording Properties

Screen recording properties are effects specific to demonstrations using the mouse and keyboard. They can only be applied to screen recording clips.

This tour focuses on the most common features. For more details, see [Configuring Screen Recording Properties](#).

Figure 6. Screen Recording Properties



Pointer Zoom. Often it can be difficult to see the mouse in a screencast, particularly if the video has been significantly resized. Increasing the pointer zoom value makes the mouse cursor larger and easier for the viewer to follow.

Click Effect. This feature can be used to make a visual effect when you click your mouse. Select Radar to screencast a red circle with each click or Invert to change the cursor from black to white with each click.

Sound on Click. Select this option to generate a click sound when the mouse button is pressed.

Show Keys Pressed. Select this option to display the text as you were typing it while recording.

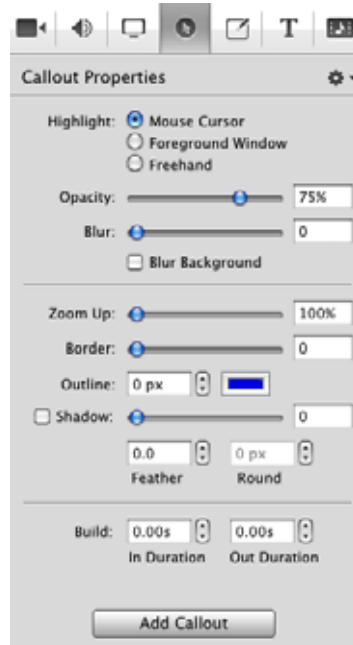
Show Modifier Keys Pressed. Select this option to display modifiers used in hotkey commands, F1 through F12, and the arrow keys.

Callout Properties

Callout Properties are used to highlight a specific portion of the screen. They can be applied to screen recordings, images, or video clips. Unlike the other properties, Callout Properties must be used with an action.

This tour focuses on the most common features. For more details, see [Configuring Callout Properties](#).

Figure 7. Callout Properties



Highlight. Callouts are capable of highlighting an area in three different ways. Mouse cursor highlights a circular space around the mouse cursor. Foreground Window highlights any window which is currently active. Freehand allows you to draw the area you want to highlight.

Opacity. The opacity slider controls the opacity of the space outside the callout. A low value makes the surrounding area more visible, while a high value makes the surrounding area less visible.

Zoom Up. This option magnifies the area inside the callout to make it more prominent.

Border. This option increases the range of the callout area to draw attention to a larger space. This feature is not available with freehand callouts.

Media Library

The media library stores all recorded and imported media in an unaltered state. This media may be dragged from the media library to your timeline or canvas for inclusion in the project. You can drag this media into your project multiple times to replicate the same file.

For more information, see [Using the Media Library](#).

Tour 3—Publishing Your Screencast

The purpose of this tour is to familiarize you with publishing your screencast. ScreenFlow screencasts are not video files—they are saved as ScreenFlow documents (with a *.screenflow* extension), which can only be opened and used by ScreenFlow.

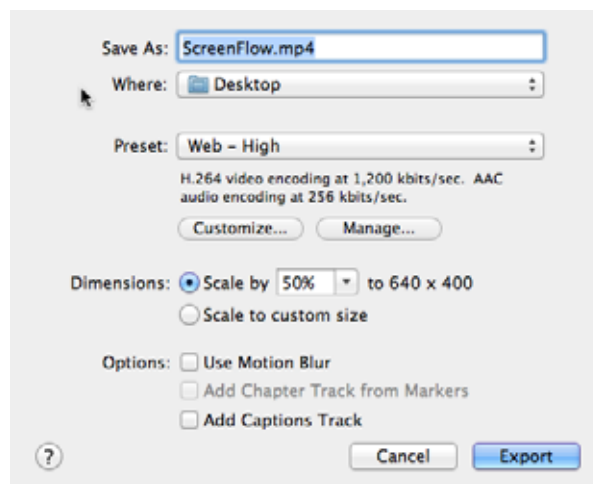
There are two ways to publish your screencasts—by exporting them to a standard video file format or publishing them directly to an Internet video service, like YouTube or Vimeo.

Determining the correct export settings for your screencast depends on the complexity of your screencast and the intended use of the video after it has been produced.

This tour explores the basics of ScreenFlow’s export options. For a comprehensive description, see [Publishing Your ScreenFlow Project](#).

Select File > Export or press Command-E to export your presentation:

Figure 8. Export Settings Window



Save As. Choose a name for your exported video (default: *ScreenFlow.mp4*).

Where. Choose a location to export your video.

Preset. ScreenFlow has several export presets for your convenience. This tour focuses on the most commonly used presets.

- **Web-High.** This is the default export option which encodes using the H.264 codec. It was chosen as the default codec based on both image quality and file size.
- **Web-Low.** This is an export option similar to Web-High, but formatted for a low bandwidth. It plays more smoothly on slow Internet connections but the image quality is not as good as Web-High.
- **Lossless.** This is an uncompressed export format ideal for additional editing. This format has the highest quality image but also the largest file size. When exported at 100%, the image quality is identical to the original recording.

iPad / iPhone / Apple TV / iPod. These export options are formatted based on the recommended video specifications for these devices. They cannot be altered.

Windows Media. This option exports a video in the WMV format (Telestream Web Store edition only). This is a popular format for Windows users. This option uses a QuickTime plugin called Flip4Mac which must be licensed separately.

Note: Flip4Mac needs to be installed for this option to appear in the export menu.

Dimensions

These options are used to set the dimensions of your video export. You should not set a size larger than your canvas size. This does not improve image quality.

Scale by. Use this option to scale your screencast by a percentage value. This is an easy way to shrink your screencast while maintaining the aspect ratio.

Scale to custom size. Use this option to set the exact width and height of your exported video. Click the Letterbox Content box to add letterboxing to your export.

Publishing

In addition to encoding a video file, ScreenFlow can also publish screencasts directly to YouTube, Vimeo, Google Drive, Facebook, and Flash. These options are accessible from the File menu. For more information, see [Publishing Your ScreenFlow Project](#).

