

# Vantage Media Manager Quick Start Guide



August 23, 2019 - 280790

# Copyright and Trademarks

- Copyright 2019 Telestream, LLC. All rights reserved. No part of this publication may be reproduced, transmitted, transcribed, altered, or translated into any languages without the written permission of Telestream. Information and specifications in this document are subject to change without notice and do not represent a commitment on the part of Telestream.
- **Telestream.** Telestream, CaptionMaker, Episode, Flip4Mac, FlipFactory, Flip Player, Gameshow, GraphicsFactory, Lightspeed, MetaFlip, Post Producer, ScreenFlow, Split-and-Stitch, Switch, Tempo, TrafficManager, Vantage, VOD Producer and Wirecast, are registered trademarks and Cricket, e-Captioning, iQ, iVMS, iVMS ASM, Inspector, MacCaption, Pipeline, Vantage Cloud Port, Vidchecker, and Surveyor are trademarks of Telestream, LLC. All other trademarks are the property of their respective owners.

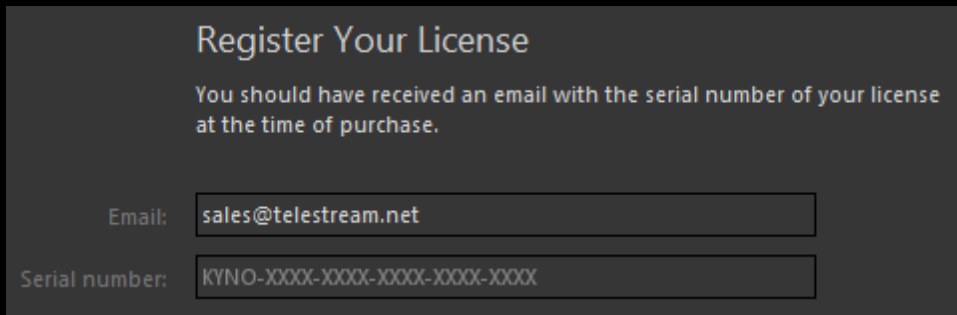
# Installing

## Run Installer

Run the installer for your platform (Mac vs Windows). Follow the on-screen instructions.

## Launch and License

On first launch, select a 30 day trial, or enter your license. Be sure to use the email address you used to sign up for the license, or activation will fail.



The screenshot shows a dark-themed dialog box titled "Register Your License". Below the title, a message states: "You should have received an email with the serial number of your license at the time of purchase." There are two input fields. The first is labeled "Email:" and contains the text "sales@telestream.net". The second is labeled "Serial number:" and contains a placeholder text "KYNO-XXXX-XXXX-XXXX-XXXX".

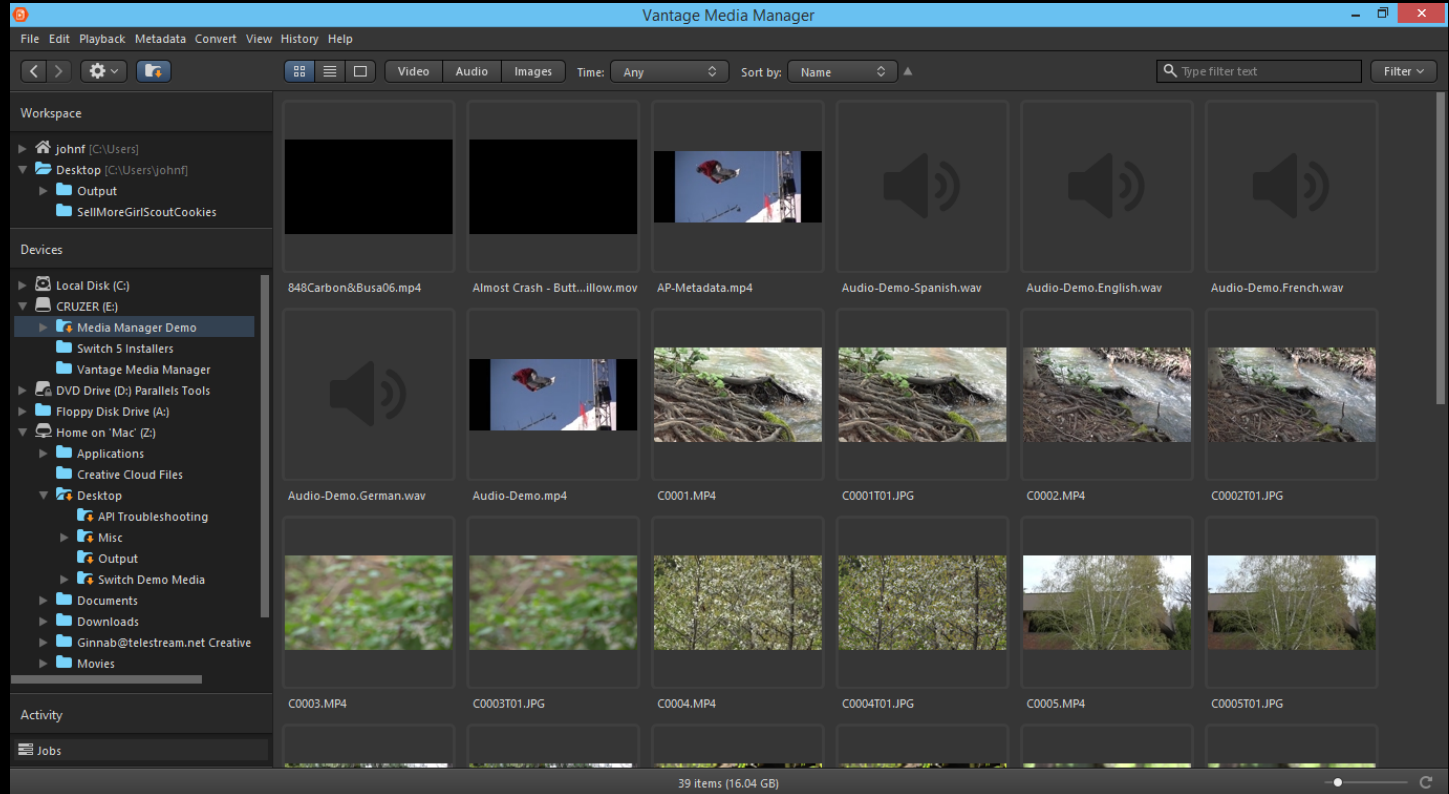
Register Your License

You should have received an email with the serial number of your license at the time of purchase.

Email:

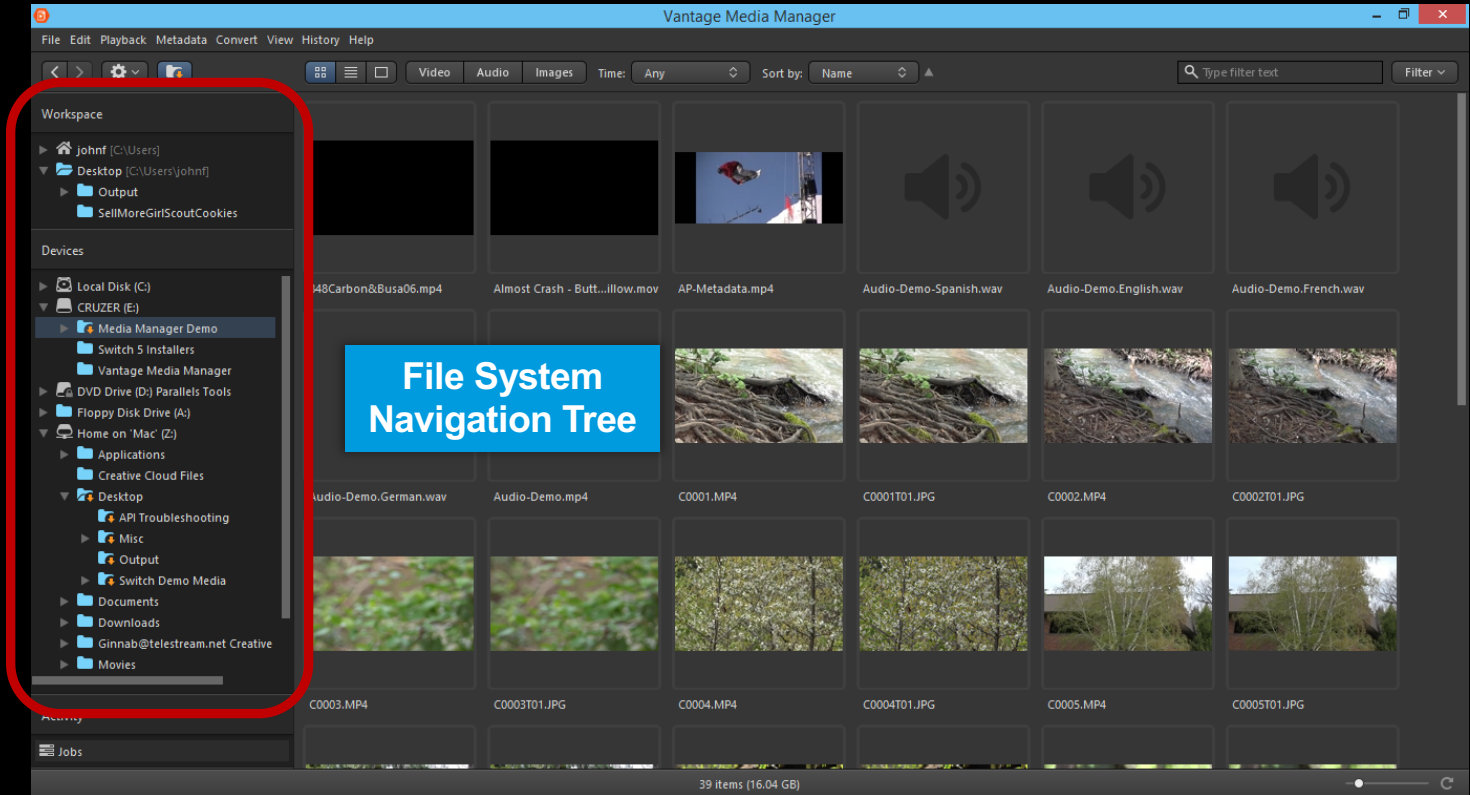
Serial number:

# Main Interface

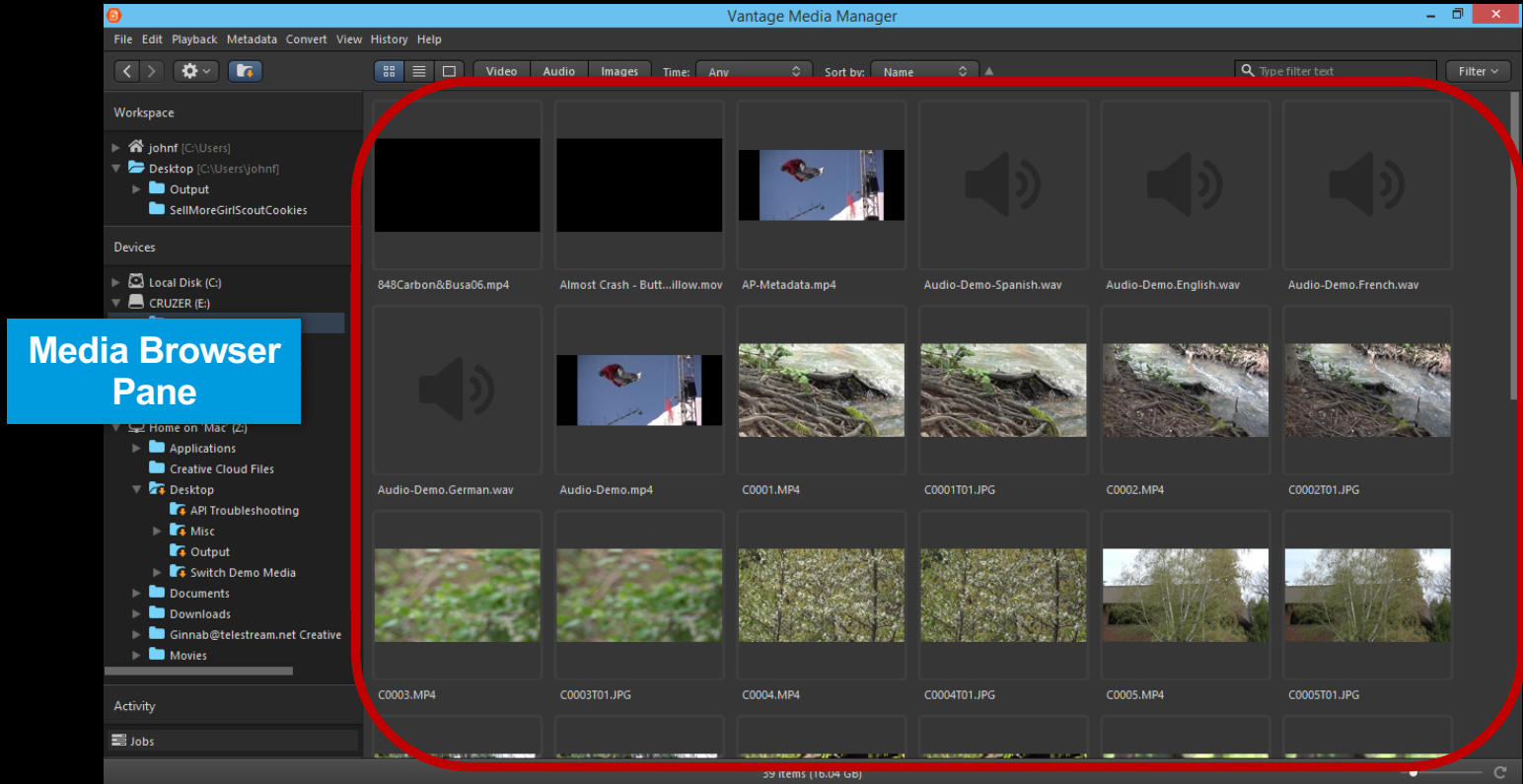




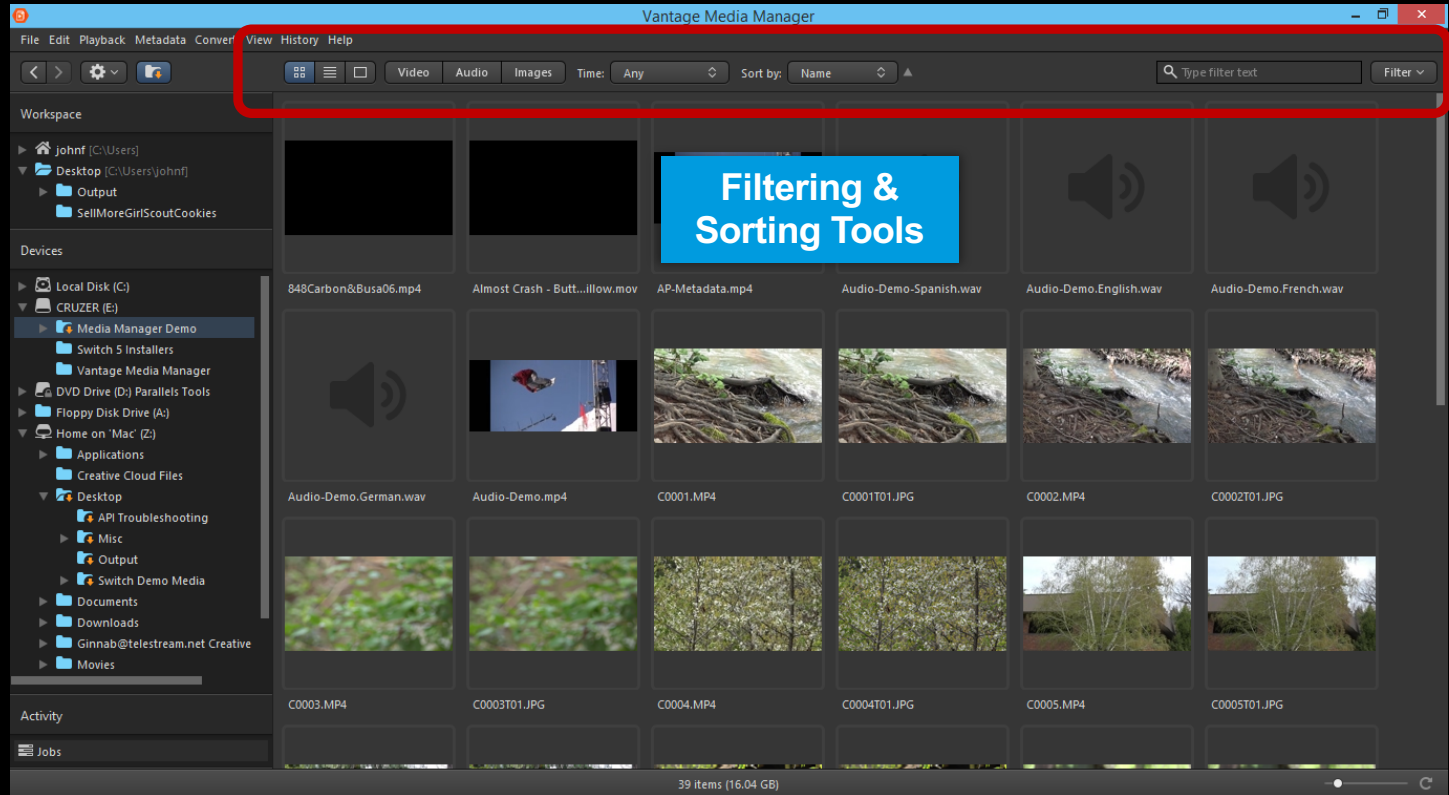
# Main Interface



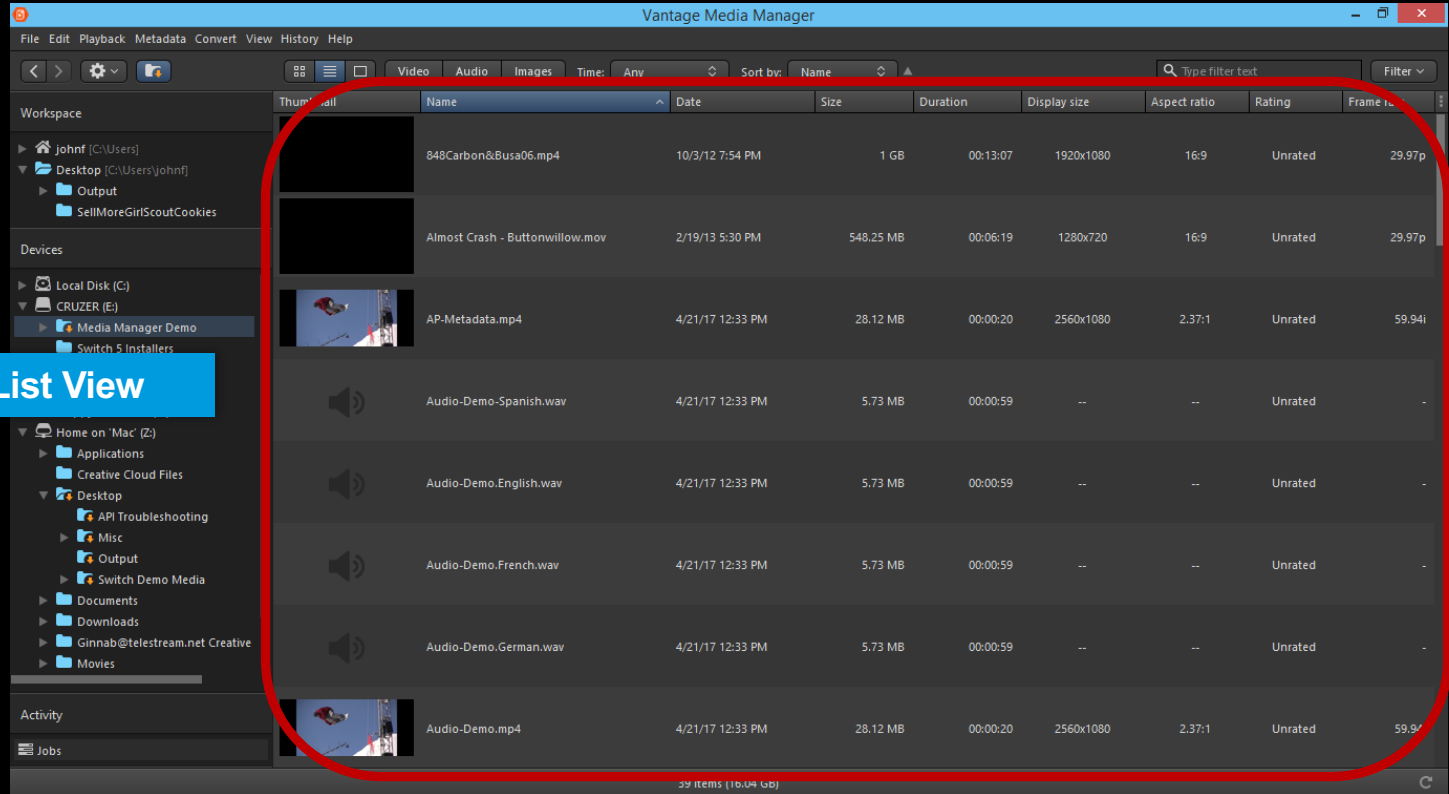
# Main Interface



# Main Interface

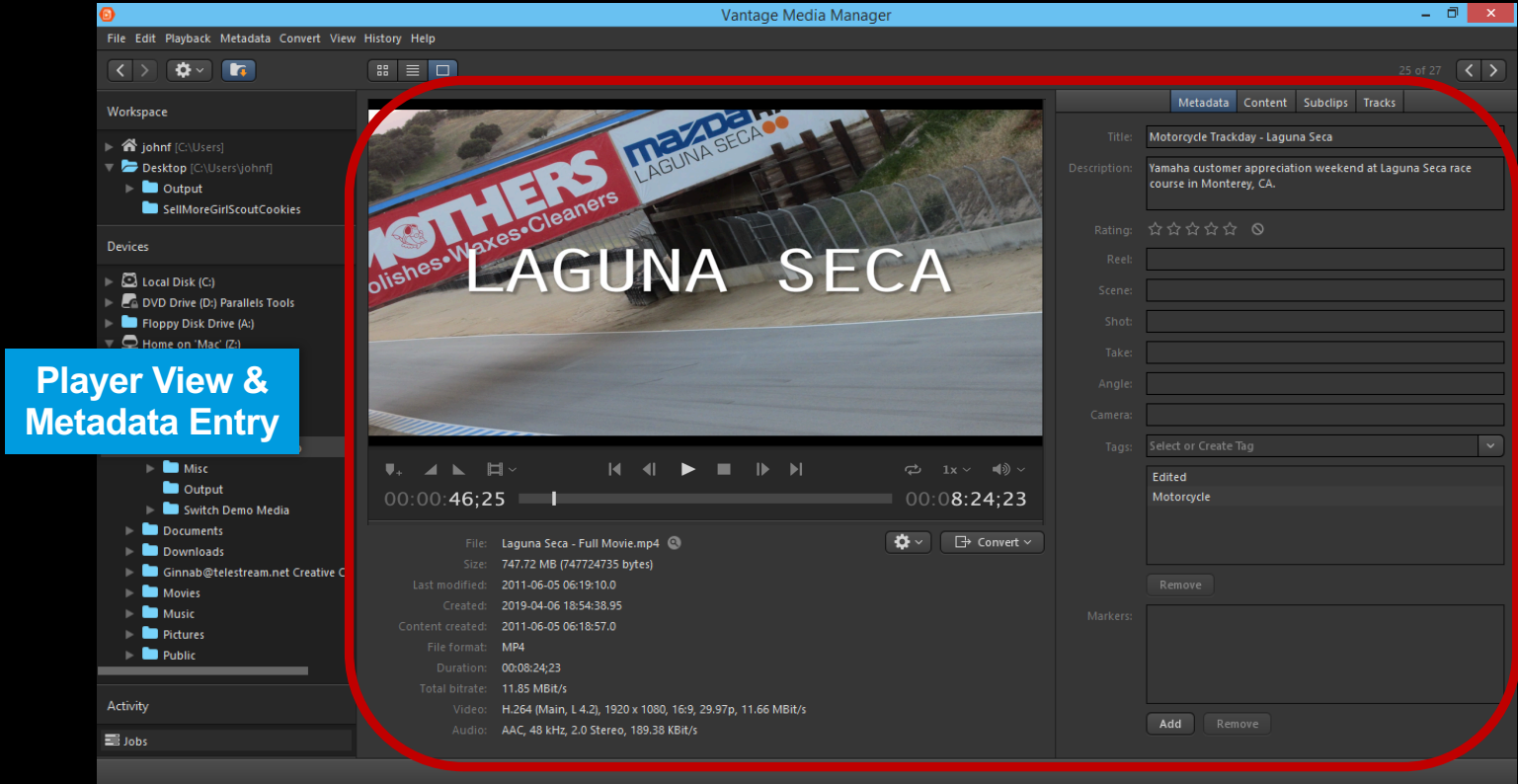


# Main Interface

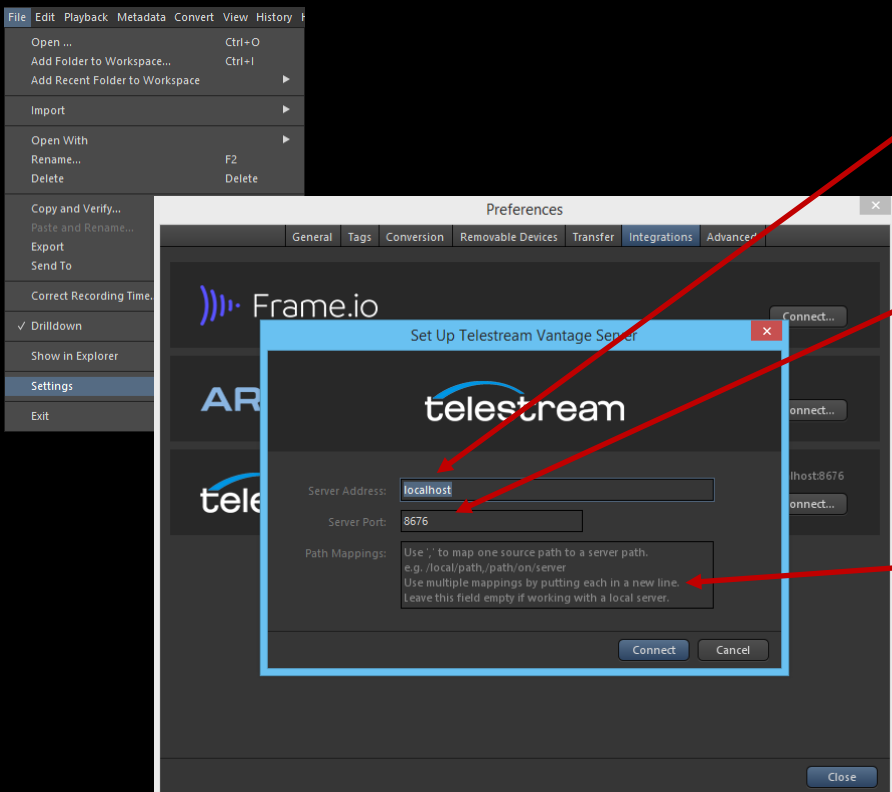


List View

# Main Interface



# Configuration



## Server Address (IP or 'localhost')

- Network address of the Vantage API server.

## Server Port (default 8676)

- Network port for the API on the server above.

## Path Mappings

- Typically used for path translation in Mac-to-Windows submissions. May also be used to convert a mapped drive letter to a network path.
- One mapping per line, matching pairs separated by commas.
- Examples for source file path:
  - [\\server\Folder1\Folder2\Folder3\File.xxx](#)
    - /Folder1/,\\server\Folder1\ (where /Folder1/ is the mounted volume name on a Mac)
    - Z:/,\\server\Folder1\ (where Z:/ is a mounted drive on Windows)

# Submission to Workflows

Send to Vantage

1 job will be submitted to the workflow 'Media Import to Storage'.

Workflow: Media Import to Storage

Medias

Original: C0002.MP4

SCC: Nature Program Subtitles.scc

Processing Metadata

Color Correction Required: ☒

SDR/HDR: HDR10

Publish Ready: ☒

Has LUT: ☒

LUT Path: \\server\Folder1\Folder2\LUTS\709toHDR10.3dl

Storage

Title: Flowing Water

Target Storage System: Media SAN

Target Office: West Coast (Los Angeles)

Intended Use: Editing

Submit Cancel

## Select Workflows

- Shows active workflows with Receive or Watch origin actions.

## Assign Media to Nicknames

- By default, the selected clip is assigned to the first nickname. In this example we have two expected nicknames, "Original" and "SCC." Because SCC files aren't shown in the browser interface, a Choose button is present in the drop down menu so that you can select any file.

## Populate Labels

- Each label identified in the Receive action has a section here.
- Parameters defined within the labels are presented based on their type.

Open	Ctrl+P
Play All	
Open With Player	
Open With	
Show in Explorer	Alt+Shift+F
Rating	
Tags...	Ctrl+Shift+T
Edit Multiple...	Ctrl+Shift+M
Assign Metadata Preset...	Ctrl+Shift+A
Import Metadata...	
Camera LUT	
Creative LUT	
Create Report...	Ctrl+Shift+I
Preanalyze...	
Refresh	
Rename...	F2
Copy	Ctrl+C
Delete	Delete
Correct Recording Time...	
Convert	
Export	
Send To	



# Submission to Workflows

## Label presentation in submission dialog

Send to Vantage

1 job will be submitted to the workflow 'Media Import to Storage'.

Workflow: Media Import to Storage

Medias

Original: C0002.MP4

SCC: Nature Program Subtitles.scc

Processing Metadata

Color Correction Required: ☒

SDR/HDR: HDR10

Publish Ready: ☒

Has LUT: ☒

LUT Path: \\server\Folder1\Folder2\LUTS\709toHDR10.3dl

Storage

Title: Flowing Water

Target Storage System: Media SAN

Target Office: West Coast (Los Angeles)

Intended Use: Editing

Submit Cancel

Metadata Labels

Metadata Label	Description
Macroblock Detection Label	Contains the results of the macroblock detection process.
Pipeline Embedded Label	Contains parameters commonly utilized in Pipeline capture workflow
Processing Metadata	
PSNR Comparison Label	Contains the results of the PSNR comparison.
Slate Detection Label	Contains the results of the slate detection process.

Name: Processing Metadata

Description:

Design

Parameter	Category	Description
Color Correction...	Misc (default)	
SDR/HDR	Misc (default)	
Publish Ready	Misc (default)	
Has LUT	Misc (default)	
LUT Path	Misc (default)	

Category: Misc (default)

Value Type: Text

Options: ☐ Password ☐ Required

Max Length: 0 (0 = none)

Values:  ☐ Exclusive

Preview/Test

Parameter	Value
Color Correcti...	<input type="checkbox"/> (False)
SDR/HDR	HDR10
Publish Ready	<input checked="" type="checkbox"/> (True)
Has LUT	<input type="checkbox"/> (False)
LUT Path	\\server\Folder1\Folder2\LUTS\709toHDR10.3dl

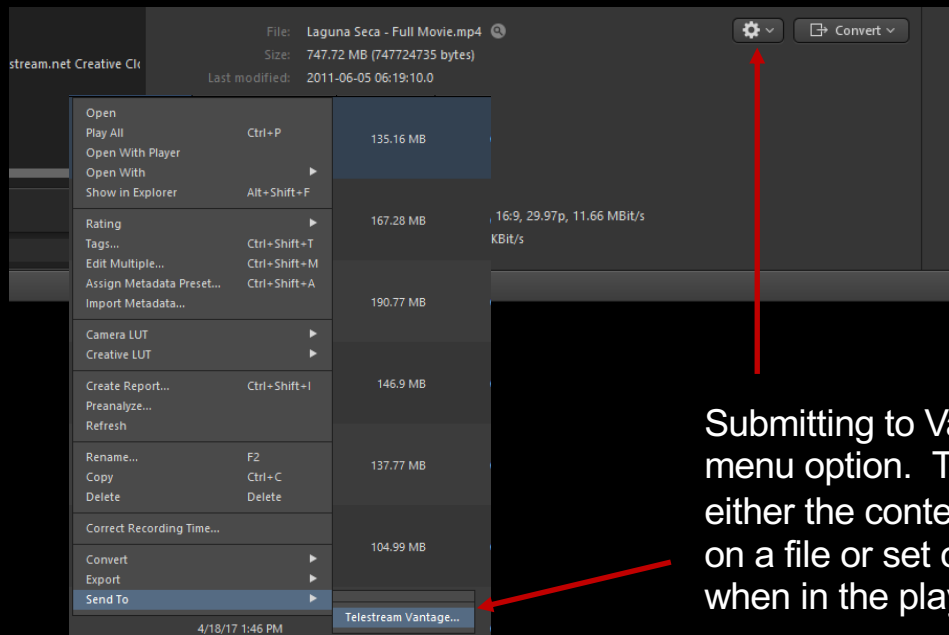
Parameter Values

Enter the optional Text values (one per line):

SDR - 601  
SDR - 709  
HDR10  
HLG  
PQ  
DolbyVision  
HDR10+

OK Cancel

# Submission to Workflows

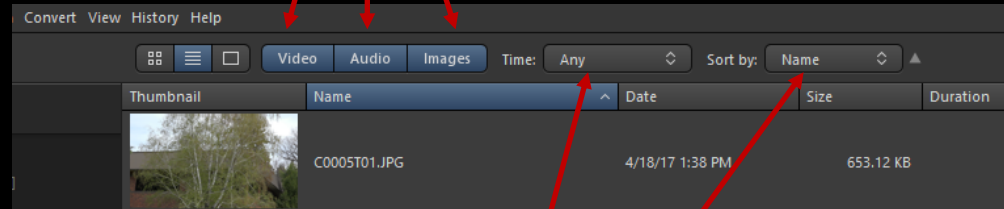


Submitting to Vantage is found in the Send To menu option. This can be accessed through either the contextual menu when right-clicking on a file or set of files, or through the Gear menu when in the playback view.

## Tool Features

### Filtering and Searching for Media

You can quickly filter out Still Image, Audio, or Video files using the buttons at the top of the browsing pane.



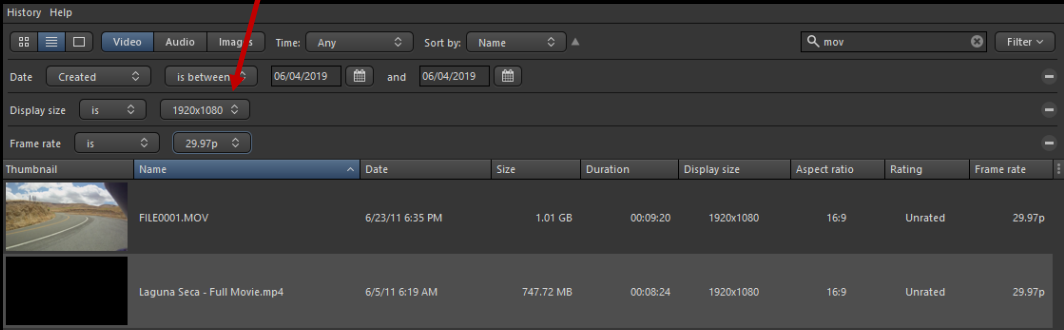
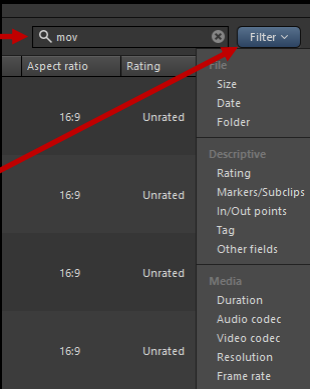
You can also choose how to sort the list and limit your results by file timestamp.

# Tool Features

## Filtering and Searching for Media

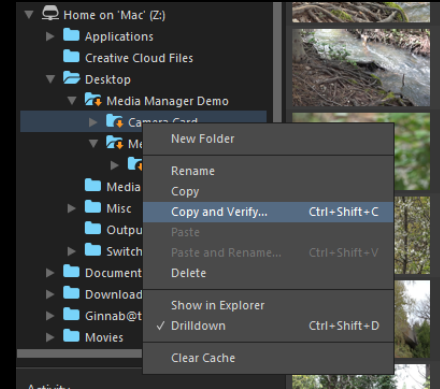
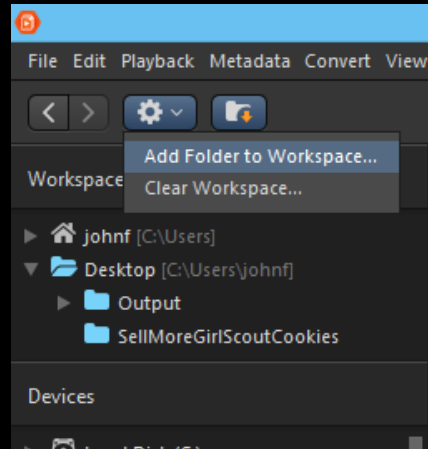
The text search box can be used to search for partial file names, full file names, or file extensions. Wildcard characters are not required.

Advanced filtering options are available in the Filter menu. These can be stacked to create very focused searches on a variety of criteria.



# Tool Features

Use Workspaces for commonly accessed locations.



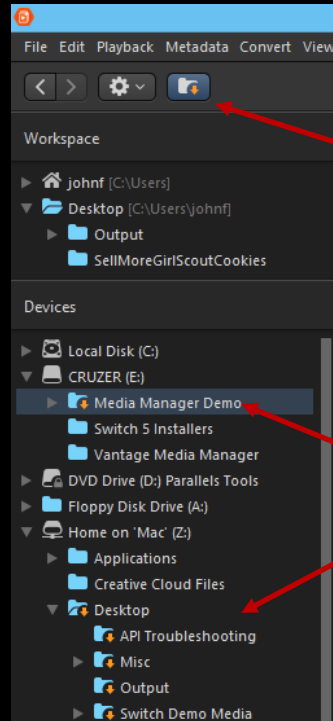
Copy files or directories to different storage and run a checksum verification to ensure no corruption.

Particularly useful for copying camera card contents to shared storage and ensuring no errors during the copy.

## Tool Features

### Drilldown Mode

Drilldown mode flattens folder structures and displays all media found in the subfolders. This makes it easier to find media without needing to click through each folder level.



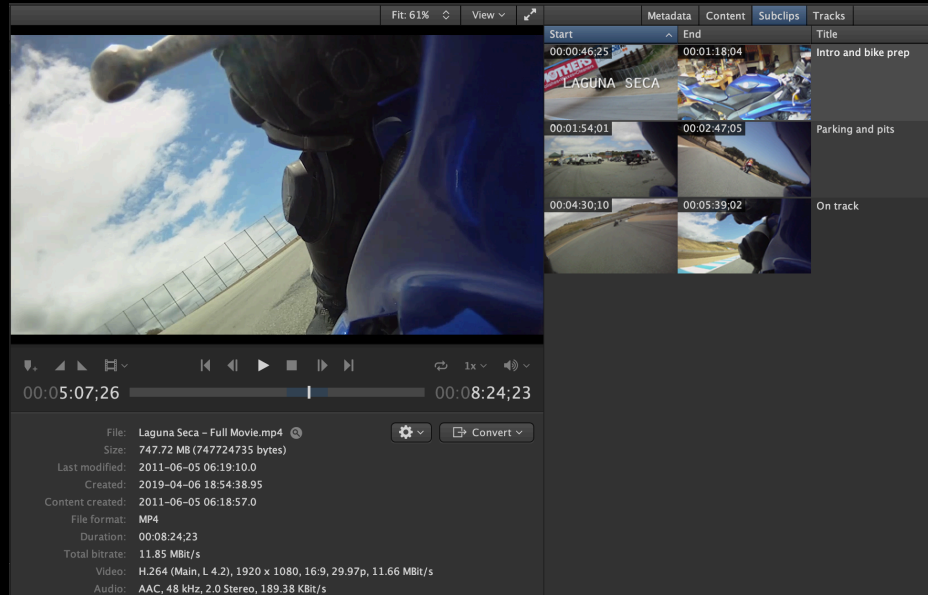
Drilldown mode is activated on the currently selected folder or disk by selecting the drill-down button at the top.

You can identify which folders have drilldown mode activated by their icon.

## Tool Features

### Setting In/Out Points and Subclipping

You can set In and Out points on a clip using standard playback navigation/scrubbing and can re-wrap the trimmed clips without submitting to Vantage. Currently set trims can also be stored as subclips and displayed in the user interface by pressing 'S'. Double pressing 'S' will let you enter a title.



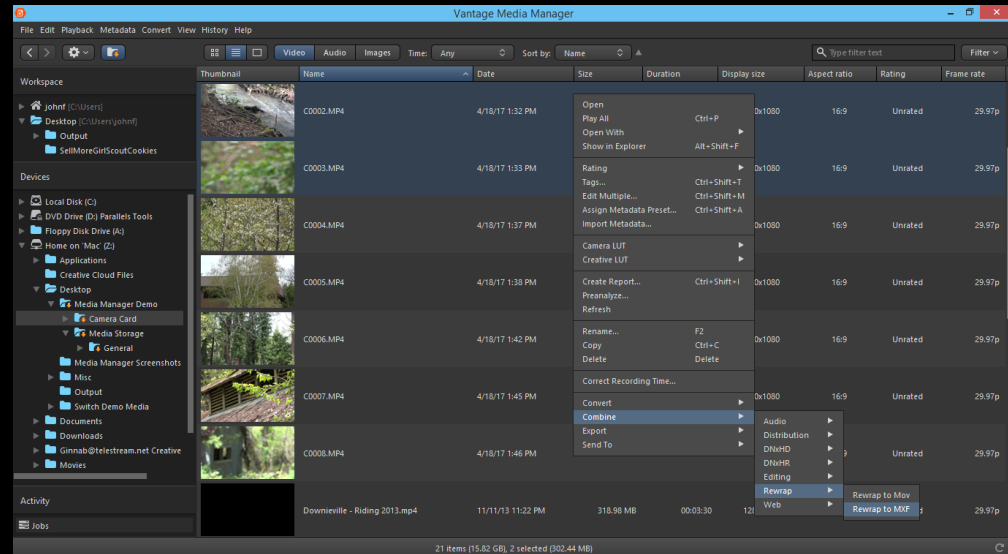


# Conversion and Re-wrapping

Some support for transcoding is built into the tool; however for our more common workflows a re-wrap export will be the most useful. While the Vantage integration does not yet recognize the trim points or defined subclips, these workflows can still be employed by doing a re-wrap export of the trimmed clip in the tool and then submitting the export to Vantage.

This same workflow can be used to stitch clips with the Combine mode as well.

## Tool Features





telestream