

VANTAGE 3.0

Web Dashboard Guide

Copyrights and Trademark Notices

Copyright © 2011 Telestream, Inc. All rights reserved. No part of this publication may be reproduced, transmitted, transcribed, altered, or translated into any languages without the written permission of Telestream. Information and specifications in this document are subject to change without notice and do not represent a commitment on the part of Telestream.

Telestream, Vantage, Flip4Mac, FlipFactory, Episode, ScreenFlow, Wirecast, GraphicsFactory, MetaFlip, MotionResolve, and Split-and-Stitch are registered trademarks and Pipeline, Launch, and Videocue are trademarks of Telestream, Inc. All other trademarks are the property of their respective owners.

QuickTime, Mac OS X, and Safari are trademarks of Apple, Inc. Bonjour, the Bonjour logo, and the Bonjour symbol are trademarks of Apple, Inc.

MainConcept is a registered trademark of MainConcept LLC and MainConcept AG. Copyright 2004 MainConcept Multimedia Technologies.

Microsoft, Windows NT|2000|XP|XP Professional|Server 2003|Server 2008, Windows 7, Media Player, Media Encoder, .Net, Internet Explorer, SQL Server 2005, and Windows Media Technologies are trademarks of Microsoft Corporation.

This product is manufactured by Telestream under license from Avid to pending patent applications.

This product is manufactured by Telestream under license from VoiceAge Corporation.

Dolby and the double-D symbol are registered trademarks of Dolby Laboratories.

SharpSSH2 Copyright (c) 2008, Ryan Faircloth.

All rights reserved.

Redistribution and use in source and binary forms, with or without modification, are permitted provided that the following conditions are met:

Redistributions of source code must retain the above copyright notice, this list of conditions and the following disclaimer.

Redistributions in binary form must reproduce the above copyright notice, this list of conditions and the following disclaimer in the documentation and/or other materials provided with the distribution.

Neither the name of Diversified Sales and Service, Inc. nor the names of its contributors may be used to endorse or promote products derived from this software without specific prior written permission.

THIS SOFTWARE IS PROVIDED BY THE COPYRIGHT HOLDERS AND CONTRIBUTORS "AS IS" AND ANY EXPRESS OR IMPLIED WARRANTIES, INCLUDING, BUT NOT LIMITED TO, THE IMPLIED WARRANTIES OF MERCHANTABILITY AND FITNESS FOR A PARTICULAR PURPOSE ARE DISCLAIMED. IN NO EVENT SHALL THE COPYRIGHT OWNER OR CONTRIBUTORS BE LIABLE FOR ANY DIRECT, INDIRECT, INCIDENTAL, SPECIAL, EXEMPLARY, OR CONSEQUENTIAL DAMAGES (INCLUDING, BUT NOT LIMITED TO, PROCUREMENT OF SUBSTITUTE GOODS OR SERVICES; LOSS OF USE, DATA, OR PROFITS; OR BUSINESS INTERRUPTION) HOWEVER CAUSED AND ON ANY THEORY OF LIABILITY, WHETHER IN CONTRACT, STRICT LIABILITY, OR TORT (INCLUDING NEGLIGENCE OR OTHERWISE) ARISING IN ANY WAY OUT OF THE USE OF THIS SOFTWARE, EVEN IF ADVISED OF THE POSSIBILITY OF SUCH DAMAGE.

Other trademarks, including brands, product names, and company names, are property of their respective holders, and are used for identification purpose only.





MPEG Disclaimers

MPEGLA MPEG2 Patent

ANY USE OF THIS PRODUCT IN ANY MANNER OTHER THAN PERSONAL USE THAT COMPLIES WITH THE MPEG-2 STANDARD FOR ENCODING VIDEO INFORMATION FOR PACKAGED MEDIA IS EXPRESSLY PROHIBITED WITHOUT A LICENSE UNDER APPLICABLE PATENTS IN THE MPEG-2 PATENT PORTFOLIO, WHICH LICENSE IS AVAILABLE FROM MPEG LA, LLC, 6312 S. Fiddlers Green circle, Suite 400E, Greenwood Village, Colorado 80111 U.S.A.

MPEGLA MPEG4 VISUAL

THIS PRODUCT IS LICENSED UNDER THE MPEG-4 VISUAL PATENT PORTFOLIO LICENSE FOR THE PERSONAL AND NON-COMMERCIAL USE OF A CONSUMER FOR (i) ENCODING VIDEO IN COMPLIANCE WITH THE MPEG-4 VISUAL STANDARD ("MPEG-4 VIDEO") AND/OR (ii) DECODING MPEG-4 VIDEO THAT WAS ENCODED BY A CONSUMER ENGAGED IN A PERSONAL AND NON-COMMERCIAL ACTIVITY AND/OR WAS OBTAINED FROM A VIDEO PROVIDER LICENSE IS GRANTED OR SHALL BE IMPLIED FOR ANY OTHER USE. ADDITIONAL INFORMATION INCLUDING THAT RELATING TO PROMOTIONAL, INTERNAL AND COMMERCIAL USES AND LICENSING MAY BE OBTAINED FROM MPEG LA, LLC. SEE [HTTP://WWW.MPEGLA.COM](http://www.mpegla.com).

MPEGLA AVC

THIS PRODUCT IS LICENSED UNDER THE AVC PATENT PORTFOLIO LICENSE FOR THE PERSONAL USE OF A CONSUMER OR OTHER USES IN WHICH IT DOES NOT RECEIVE REMUNERATION TO (i) ENCODE VIDEO IN COMPLIANCE WITH THE AVC STANDARD ("AVC VIDEO") AND/OR (ii) DECODE AVC VIDEO THAT WAS ENCODED BY A CONSUMER ENGAGED IN A PERSONAL ACTIVITY AND/OR WAS OBTAINED FROM A VIDEO PROVIDER LICENSED TO PROVIDE AVC VIDEO. NO LICENSE IS GRANTED OR SHALL BE IMPLIED FOR ANY OTHER USE. ADDITIONAL INFORMATION MAY BE OBTAINED FROM MPEG LA, L.L.C. SEE [HTTP://WWW.MPEGLA.COM](http://www.mpegla.com).

MPEG4 SYSTEMS

THIS PRODUCT IS LICENSED UNDER THE MPEG-4 SYSTEMS PATENT PORTFOLIO LICENSE FOR ENCODING IN COMPLIANCE WITH THE MPEG-4 SYSTEMS STANDARD, EXCEPT THAT AN ADDITIONAL LICENSE AND PAYMENT OF ROYALTIES ARE NECESSARY FOR ENCODING IN CONNECTION WITH (i) DATA STORED OR REPLICATED IN PHYSICAL MEDIA WHICH IS PAID FOR ON A TITLE BY TITLE BASIS AND/OR (ii) DATA WHICH IS PAID FOR ON A TITLE BY TITLE BASIS AND IS TRANSMITTED TO AN END USER FOR PERMANENT STORAGE AND/OR USE. SUCH



ADDITIONAL LICENSE MAY BE OBTAINED FROM MPEG LA, LLC. SEE <HTTP://WWW.MPEGLA.COM> FOR ADDITIONAL DETAILS.

Limited Warranty and Disclaimers

Telestream, Inc. (the Company) warrants to the original registered end user that the product will perform as stated below for a period of one (1) year from the date of shipment from factory:

Hardware and Media. The Product hardware components, if any, including equipment supplied but not manufactured by the Company but NOT including any third party equipment that has been substituted by the Distributor for such equipment (the "Hardware"), will be free from defects in materials and workmanship under normal operating conditions and use.

Software. If software is supplied as part of the product, the software will operate in substantial conformance with specifications set forth in its product user's guide. The Company does not warrant that the software will operate uninterrupted or error-free, will meet your requirements, or that software errors will be corrected.

Warranty Remedies

Your sole remedies under this limited warranty are as follows:

Hardware and Media. The Company will either repair or replace (at its option) any defective Hardware component or part, or Software Media, with new or like new Hardware components or Software Media. Components may not be necessarily the same, but will be of equivalent operation and quality.

Software. If software is supplied as part of the product and it fails to substantially conform to its specifications as stated in the product user's guide, the Company shall, at its own expense, use its best efforts to correct (with due allowance made for the nature and complexity of the problem) such defect, error or nonconformity.

Software Updates

If software is supplied as part of the product, the Company will supply the registered purchaser/licensee with maintenance releases of the Company's proprietary Software Version Release in manufacture at the time of license for a period of one year from the date of license or until such time as the Company issues a new Version Release of the Software, whichever first occurs. To clarify the difference between a Software Version Release and a maintenance release, a maintenance release generally corrects minor operational deficiencies (previously non-implemented features and software errors) contained in the Software, whereas a Software Version Release adds new features and functionality. The Company shall have no obligation to supply you with any new Software Version Release of Telestream software or third party software during the warranty period, other than maintenance releases.

Restrictions and Conditions of Limited Warranty

This Limited Warranty will be void and of no force and effect if (i) Product Hardware or Software Media, or any part thereof, is damaged due to abuse, misuse, alteration, neglect, or shipping, or as a result of service or modification by a party other than the Company, or (ii) Software is modified without the written consent of the Company.

Limitations of Warranties

THE EXPRESS WARRANTIES SET FORTH IN THIS AGREEMENT ARE IN LIEU OF ALL OTHER WARRANTIES, EXPRESS OR IMPLIED, INCLUDING, WITHOUT LIMITATION, ANY WARRANTIES OF MERCHANTABILITY OR FITNESS FOR A PARTICULAR PURPOSE. No oral or written information or advice given by the Company, its distributors, dealers or agents, shall increase the scope of this Limited Warranty or create any new warranties.



Geographical Limitation of Warranty. This limited warranty is valid only within the country in which the Product is purchased/licensed.

Limitations on Remedies. YOUR EXCLUSIVE REMEDIES, AND THE ENTIRE LIABILITY OF TELESTREAM, INC. WITH RESPECT TO THE PRODUCT, SHALL BE AS STATED IN THIS LIMITED WARRANTY. Your sole and exclusive remedy for any and all breaches of any Limited Warranty by the Company shall be the recovery of reasonable damages which, in the aggregate, shall not exceed the total amount of the combined license fee and purchase price paid by you for the Product.

Damages. TELESTREAM, INC. SHALL NOT BE LIABLE TO YOU FOR ANY DAMAGES, INCLUDING ANY LOST PROFITS, LOST SAVINGS, OR OTHER INCIDENTAL OR CONSEQUENTIAL DAMAGES ARISING OUT OF YOUR USE OR INABILITY TO USE THE PRODUCT, OR THE BREACH OF ANY EXPRESS OR IMPLIED WARRANTY, EVEN IF THE COMPANY HAS BEEN ADVISED OF THE POSSIBILITY OF THOSE DAMAGES, OR ANY REMEDY PROVIDED FAILS OF ITS ESSENTIAL PURPOSE.

Further information regarding this limited warranty may be obtained by writing:

Telestream, Inc.
848 Gold Flat Road
Nevada City, CA 95959

You can call Telestream, Inc. via telephone at (530) 470-1300.





Contents

Preface

Obtaining Support Information Assistance	xi
Vantage FAQs, Forums & Upgrades	xi
Company and Product Information	xi
Mail.....	xi
International Telestream Distributors.....	xi
We'd Like to Hear From You!	xi

Chapter 1 Using the Web Dashboard

Starting the Vantage Web Dashboard	2
Login	2
Welcome	5
Web Dashboard Monitoring	8
Summary Status	8
Pie Chart	8
Bar Chart.....	10
Domain Job Status.....	12
Job Status	12
Actions	15
Job Status Views	16
Web Dashboard Health.....	17
Array Statistics	17
Array Statistics Panel	18
Service Statistics Panel.....	18
Service Statistics.....	20
Cumulative Statistics Panel.....	20
Individual Statistics Panel.....	21
Third Party Devices	23



Web Dashboard Administration	24
License Status	24
Release and Patch Status	24
Web Dashboard Help	26
About	26
Help Documentation	26
User Guide	26
Web Help	26
Welcome Page	27



Figures

Chapter 1 Using the Web Dashboard

Figure 1. Selecting a Vantage Domain	2
Figure 2. Connection Settings.....	3
Figure 3. Web Dashboard Log In	4
Figure 4. Welcome Window	5
Figure 5. Change Password.....	6
Figure 6. Change Domain	6
Figure 7. Summary Status	8
Figure 8. Workflow Success.....	9
Figure 9. Action Allocation	9
Figure 10. Selected Action	10
Figure 11. About Dialog Box	10
Figure 12. Server Health	11
Figure 13. Service Health.....	11
Figure 14. Domain Job Status.....	12
Figure 15. Job Status Panel.....	13
Figure 16. Dashboard Filters.....	14
Figure 17. All States Menu.....	14
Figure 18. Actions Panel	15
Figure 19. Job Status Views	16
Figure 20. Array Statistics	17
Figure 21. Array Statistics Panel.....	18
Figure 22. Service Statistics Panel	19
Figure 23. Service Statistics.....	20
Figure 24. Cumulative Statistics Panel	21
Figure 25. Individual Statistics Panel	22
Figure 26. Third Party Devices.....	23
Figure 27. License Status	24
Figure 28. Release and Patch Status	25
Figure 29. About Dialog Box	26





Preface

Obtaining Support | Information | Assistance

Web Site. <http://www.telestream.net/telestream-support/vantage/support.htm>

Support Email. support@telestream.net

Terms and times of support services vary, per the terms of your current service contract with Telestream.

Vantage FAQs, Forums & Upgrades

Web Site. <http://www.telestream.net/telestream-support/vantage/support.htm>

Company and Product Information

For information about Telestream or its products, please contact us via:

Web Site. www.telestream.net

Sales and Marketing Email. info@telestream.net

Mail

Telestream, Inc.
848 Gold Flat Road, Suite 1
Nevada City, CA. USA 95959

International Telestream Distributors

See the Telestream Web site at www.telestream.net for your regional authorized Telestream distributor.

We'd Like to Hear From You!

If you have comments or suggestions about improving this document, or other Telestream documents – or if you've discovered an error or omission, please email us at techwriter@telestream.net.





CHAPTER 1

Using the Web Dashboard

This chapter describes how to use the Vantage Web Dashboard.

The Web Dashboard is designed as a Web app so it can be accessed from anywhere on your network with a Web browser and provide an easy-to-use interface with monitoring and diagnostic capability.

Note: *Web Dashboard is only available with Vantage Master Control.*

The Web Dashboard offers the following functionality:

- Determines the status of jobs flowing through the Vantage network.
- Measures the functional health of system components.

Note: *See the Vantage Installation User's Guide on how to install the Web Dashboard on your IIS server.*

Topics

- [Starting the Vantage Web Dashboard](#)
- [Web Dashboard Monitoring](#)
- [Web Dashboard Health](#)
- [Web Dashboard Administration](#)
- [Web Dashboard Help](#)



STARTING THE VANTAGE WEB DASHBOARD

The Vantage Web Dashboard is a Web application that is accessed through a Web browser. Telestream recommends the following Web Browsers for use with the Vantage Web Dashboard:

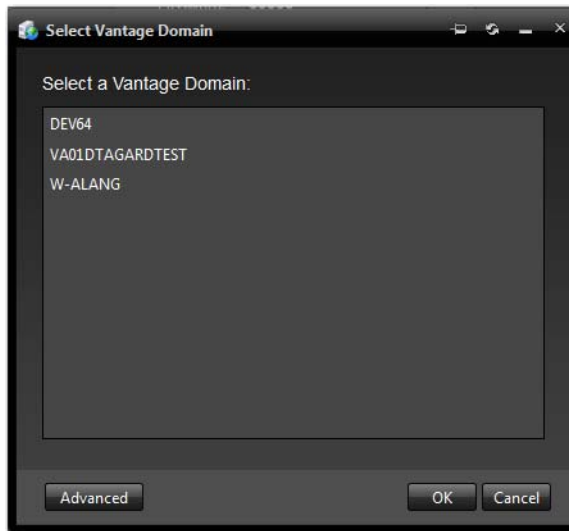
- Internet Explorer 8.0 and 9.0
- Firefox 3.6 and 4.0
- Safari 5.0
- Google Chrome

Login

To start the Vantage Web Dashboard, open your Web Browser and navigate to the location of the Vantage Web Dashboard on an IIS server. The URL for this is: *http://<ServerName>/Dashboard*, where <ServerName> is the name of the server (or its IP address) hosting the Web Dashboard application. If you don't know the URL of the Web Dashboard, obtain it from your Vantage administrator or IT department.

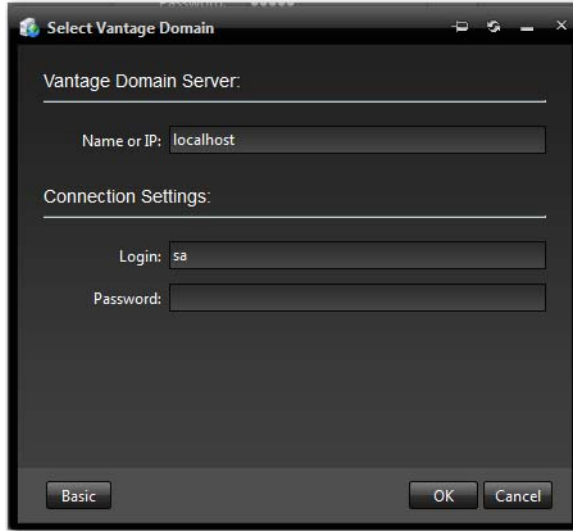
The first time you attempt to log in, you will be asked to select a domain to which the Web Dashboard should attach. Select the domain and click OK.

Figure 1. Selecting a Vantage Domain



Note: Click *Advanced* and enter *Connection Settings* if the Vantage database does not already have a default password.

Figure 2. Connection Settings

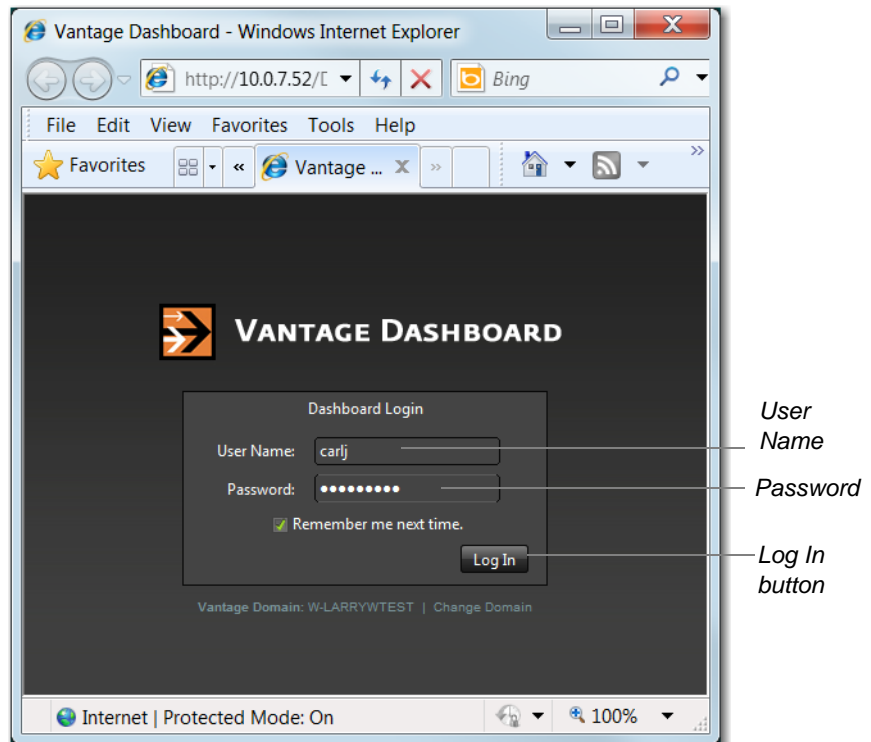


The screenshot shows a dialog box titled "Select Vantage Domain". It has a dark grey background and a white border. The dialog is divided into two sections by horizontal lines. The first section is labeled "Vantage Domain Server:" and contains a text input field with the label "Name or IP:" and the value "localhost". The second section is labeled "Connection Settings:" and contains two text input fields: "Login:" with the value "sa" and "Password:" which is currently empty. At the bottom of the dialog, there are three buttons: "Basic" on the left, and "OK" and "Cancel" on the right.



Web Dashboard logs onto the selected domain, and asks for your Vantage user login information. When the login dialog box displays, enter the User Name and Password assigned by your Vantage Administrator, then click Log In:

Figure 3. Web Dashboard Log In



The default user name and password, which remain the same until changed, are:

- User Name: Administrator
- Password: <none> (no characters entered)

Note: All user passwords are encrypted in the Vantage database. All users have the option of changing their password.

Check *Remember me next time* to store the authentication token in a persistent cookie in the browser. This will keep you authenticated if you close your browser and reopen it again.



Welcome

Upon successful login, the Dashboard welcome screen displays, describing the functionality of all the selections in the menu on the left side of the window:

Figure 4. Welcome Window



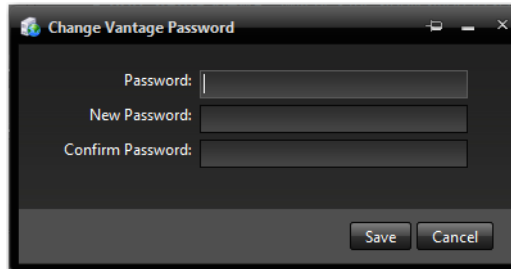
Hide Header Click this button to collapse or expand the top pane header.

Change Password Click Change Password to display a dialog box to change your password. Enter your current password in the Password



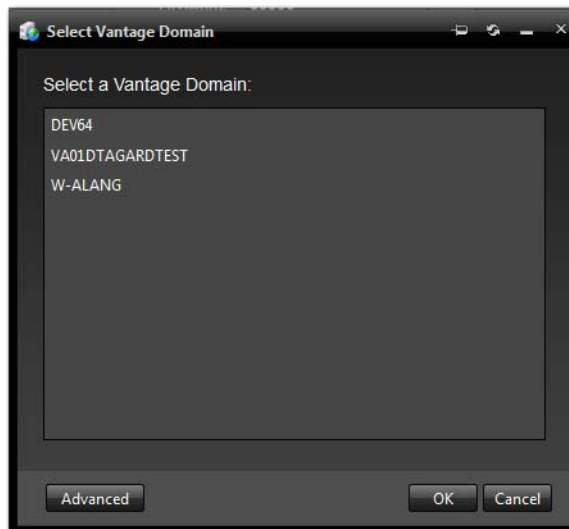
field. Enter your new password in the New Password field and confirm it by re-entering it in the Confirm Password field. Click Save when finished:

Figure 5. Change Password



Change Domain Click Change Domain to change to a different Vantage domain. (See [Login](#) for details).

Figure 6. Change Domain



Log out Click Logout to change users. Once logged out the log in window displays again. (See [Login](#)).

The Web Dashboard offers four categories of menu selections: Monitoring, Health, Administration, and Help. The summaries displayed in the Welcome window are also provided below:

■ **Monitoring**

- **Summary Status** This is the main overview charting page of the Dashboard. It contains a pie & bar chart that can be navigated to view various system wide data points to determine system failure spots & percentages.
- **Domain Job Status** This is a real time view of job data going through the Vantage system.



- **Job Status Views** Switches the application to a customized view of Vantage job status.

■ Health

- **Array Statistics** This page displays job failures, as a percentage, at a server level, in real time.
- **Service Statistics** This page is essentially a flip of array statistics. Results are displayed as a rollup of statistics by service to show the values for a service accumulated across all servers. Selecting a particular service then shows the statistics of that service on each server it is running on in the bottom grid.
- **3rd Party Devices** This page provides access to the Agility health monitor, showing the health of each Agility server node, and its corresponding worker success rate.

■ Administration

- **License Status** This page displays licensing data (similar to that displayed in the Management Console).
- **Vantage Release & Patch Status** This page is designed to show the current Vantage release and plug-in information.



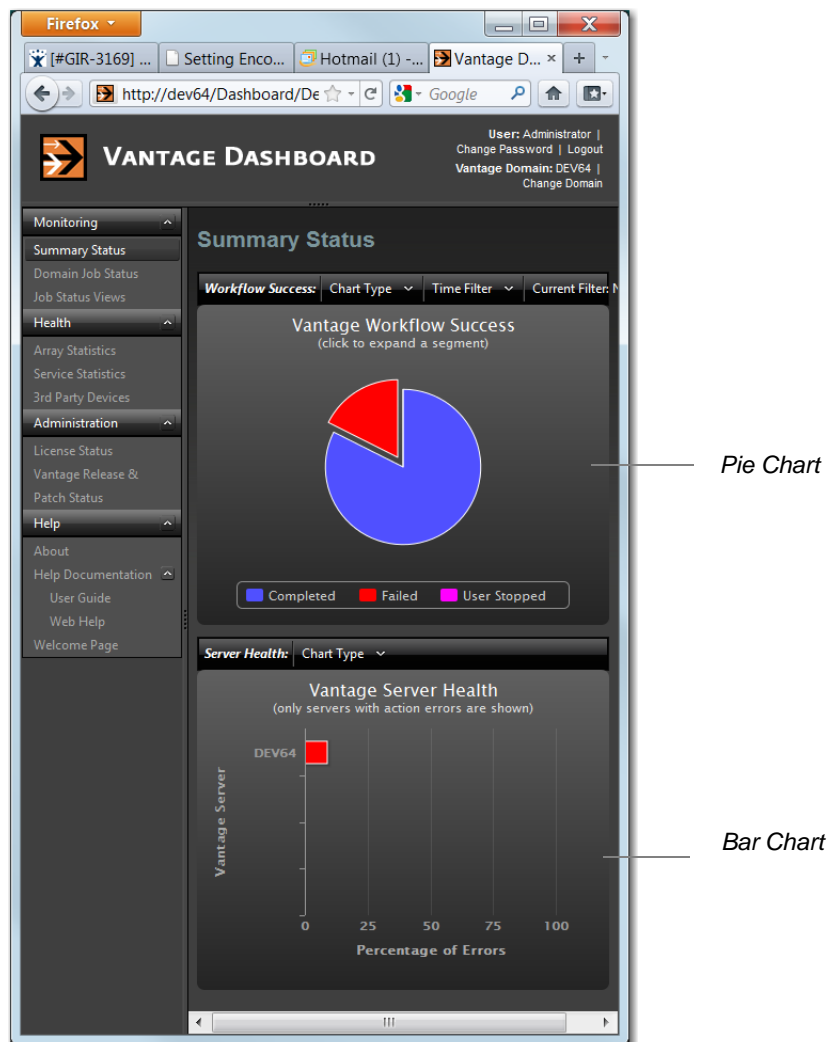
WEB DASHBOARD MONITORING

The Web Dashboard provides monitoring of job status for all Vantage workflows: Summary Status, Domain Job Status, and Job Status Views.

Summary Status

Summary Status provides an overview of the Dashboard. It contains a pie chart that reports workflow success and action allocation, and a bar chart that reflects the functional health of the server and its services.

Figure 7. Summary Status



Pie Chart

The Workflow Success pie chart presents a visual comparison of the completed, failed, and user-stopped jobs. Hovering over each piece of the pie with your mouse displays the percentage of that piece. There are two menu items at the top of the panel: Chart Type and Time Filter.

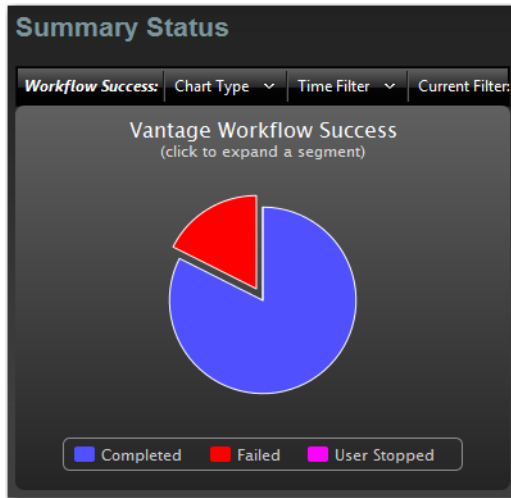


Chart Type Menu

The Chart Type menu selects the type of chart displayed.

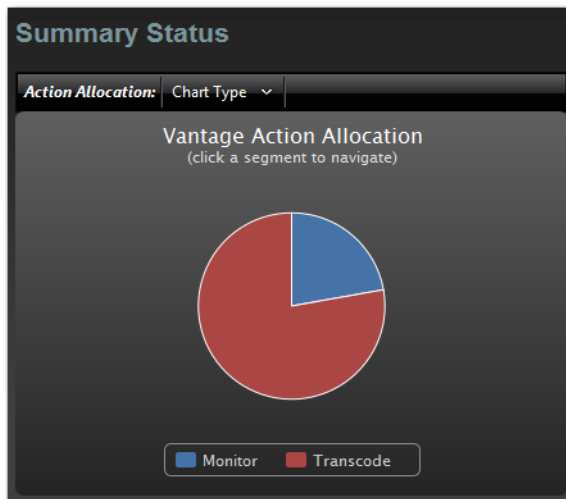
Workflow Success This menu item displays a chart of the percentage of completed, failed, and user-stopped jobs.

Figure 8. Workflow Success



Action Allocation This menu item displays a chart of the percentage each action has for the selected workflow jobs. The action allocation chart is used to provide a summary of all the sessions that are active & queued in the network. Each segment can be viewed individually by clicking on the segment to see the percentage of active vs. queued sessions within that component.

Figure 9. Action Allocation

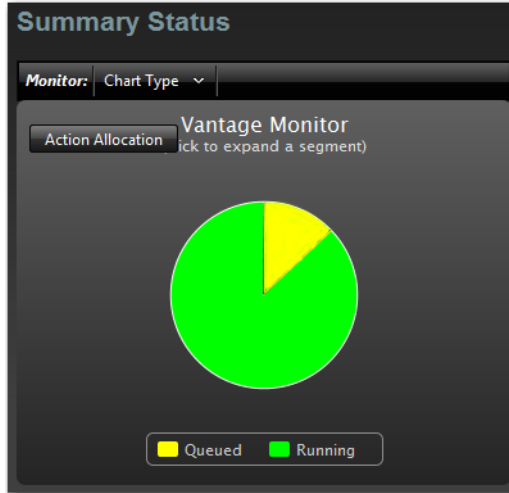


Selected Actions The remaining menu items are available actions. Selecting an individual action displays a new pie chart that reports the



Queued and Running status of that action. If no data is available for the selected action, a message warning this is displayed.

Figure 10. Selected Action

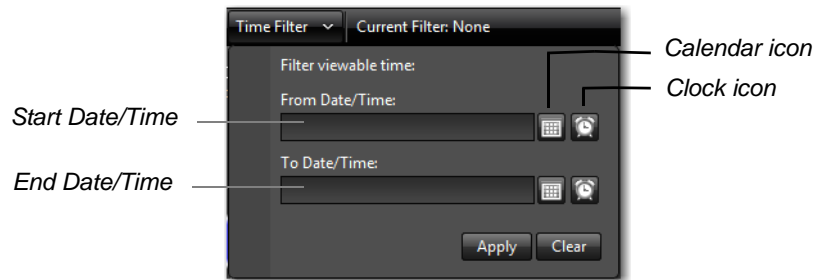


All actions in a workflow that have not yet completed are considered to be *Waiting*. However, the action that is next in line to be executed (after a completed action) is considered to be *Queued*.

Time Filter Menu

The Time Filter menu item enables the user to select a starting and ending date (and time). This enables you to focus on a particular segment of workflow jobs. Click the calendar icon to set the date and click the clock icon to set the time. Click Apply to save settings.

Figure 11. About Dialog Box



Bar Chart

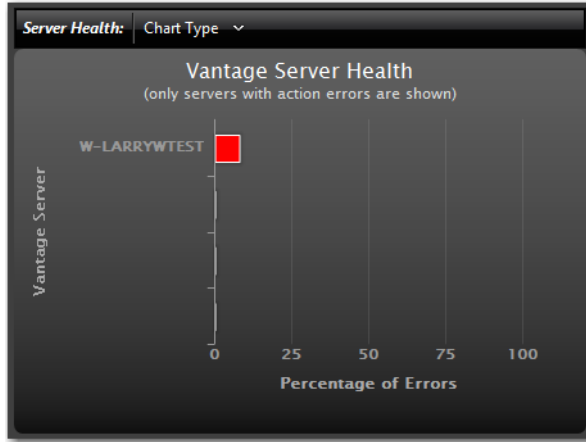
The bar chart presents a visual comparison of the percentage of errors on the server and its services.



Server Health

Server Health presents the percentage of errors for each server in the Vantage domain:

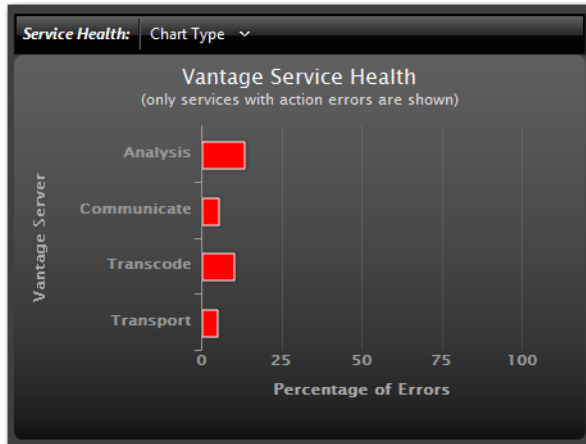
Figure 12. Server Health



Service Health

Service Health presents the percentage of errors for each type of service running in a the Vantage domain of servers. This display is refreshed anytime services are restarted:

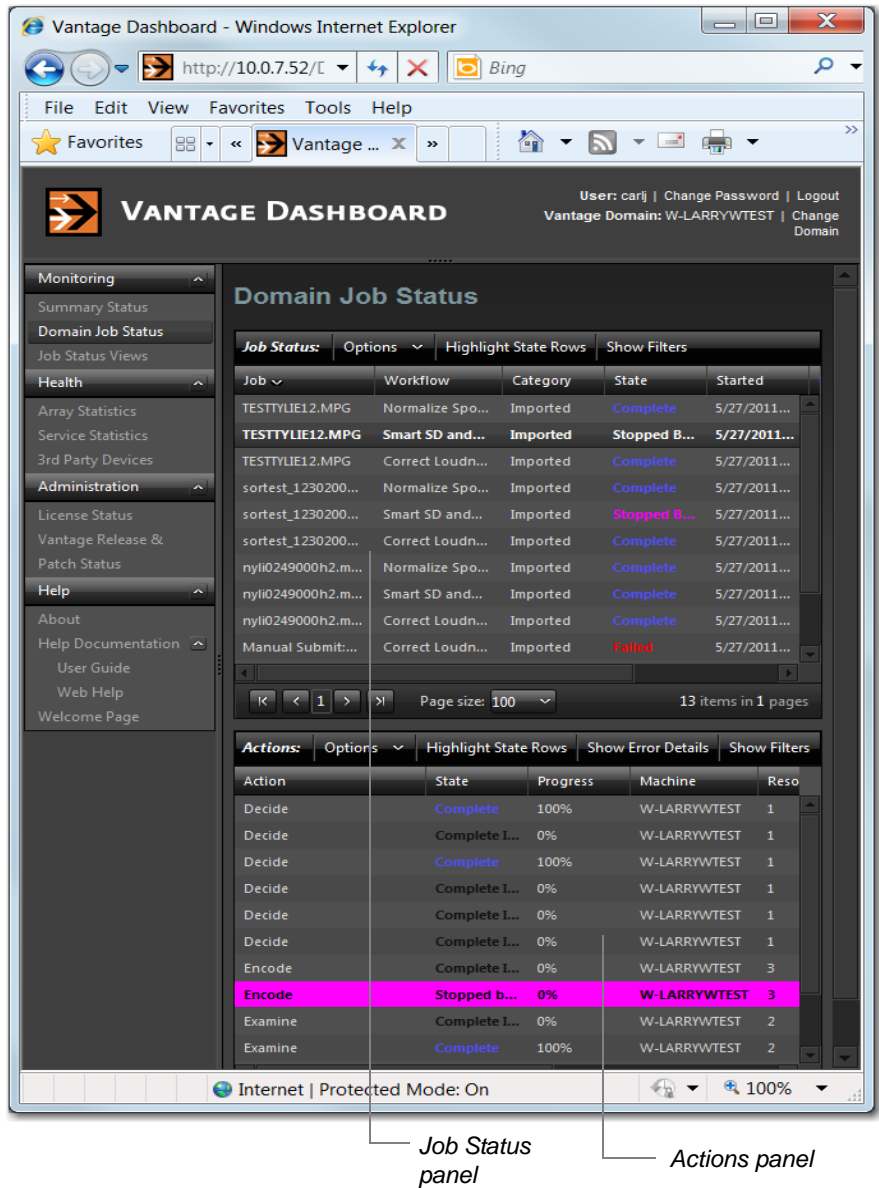
Figure 13. Service Health



Domain Job Status

Domain Job Status provides a real time view of Vantage workflow jobs. The Domain Job Status window contains two parts: the Job Status panel and the Actions panel:

Figure 14. Domain Job Status



Job Status

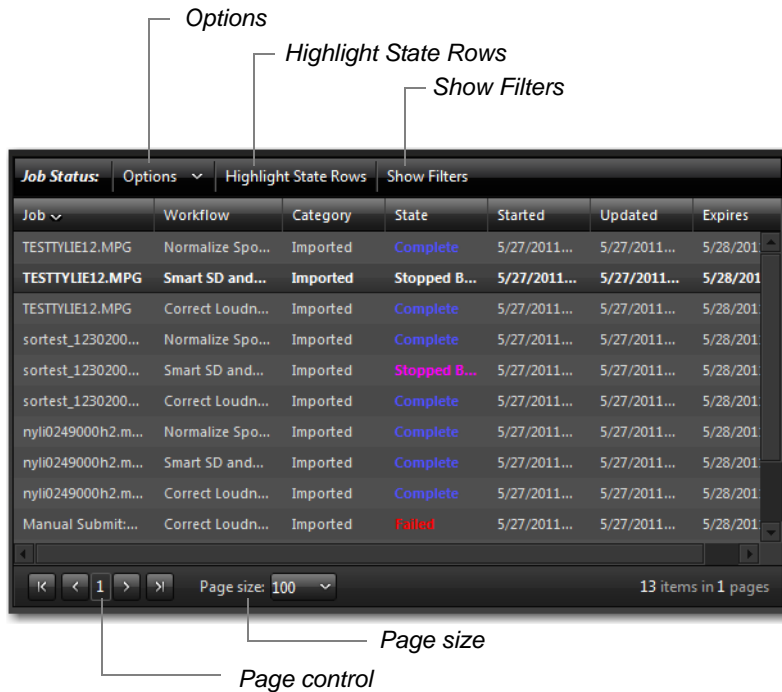
The Job Status panel presents a list of workflow jobs, the state of each job (complete, failed, stopped), and some date/time information. Whenever a job is selected, the actions associated with that job are listed in the Actions panel at the bottom of the window. (See [Actions](#)).

The job list can be sorted based on any of the job information columns. To do this click on any column heading (workflow, state, etc.). The first click



sorts the jobs in ascending order of the information in that column. The second click sorts the them in descending order. A third click removes sorting and returns to the grid default sort criteria.

Figure 15. Job Status Panel



Options When a job in the table is selected, select the Options column heading menu and select Stop | Restart | Delete. Or, right-click directly on the job, and select Stop | Restart | Delete.

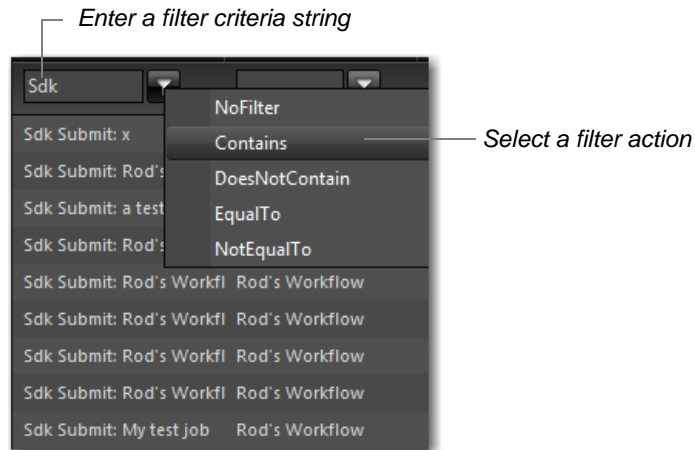
Highlight State Rows Click Highlight State Rows to highlight failed and stopped job rows using the color representing its state (red for failed and magenta for stopped). Click Highlight State Rows again to remove highlighting. This feature is useful when viewing the status monitor from a distance, enabling you to easily distinguish various states.

Show Filters Click Show Filters to display a menu of filters at the top of each column. Click Show Filters again to remove the filter menus.



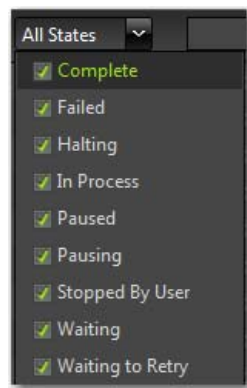
Enter a string of characters to use as a filtering criteria and select a filter action (Contains, Equal to, etc.) from the drop-down menu. Filter criteria strings are case sensitive. Select No Filter to remove filtering:

Figure 16. Dashboard Filters



The Filters menu bar also contains an All States menu. Select from this pull-down menu which states you want displayed. Check the state checkbox to include that state (Complete, Failed, etc.). Click the pull-down arrow again to close the All States menu:

Figure 17. All States Menu



Page Control You can navigate to any page by clicking the page number or by clicking the forward (right arrow) and previous (left arrow) buttons. The arrow buttons with the vertical bars navigate to the first and last pages.

Page Size Enter the number of jobs to be listed on each page.



Page adjustments are useful when adjusting performance with large amounts of data/ A smaller page size results in less data sent to the browser, but also displays a smaller amount of all the available data.

Actions

Whenever a job is selected in the Job Status panel (see [Job Status](#)), the actions associated with that job are listed in the Actions panel. The Actions panel presents a list of actions for the selected job, the state of each action, and other important information.

The action list can be sorted based on any of the action information columns. To sort the data, click on any column heading (state, progress, etc.). The first click sorts the actions in ascending order of the information in that column. The second click sorts them in descending order. A third click removes sorting and returns to the grid default sort criteria

Figure 18. Actions Panel

Action	State	Progress	Machine	Resource Cost	Created
Decide	Complete	100%	W-LARRYWTEST	1	5/27/2011 7:...
Decide	Complete L...	0%	W-LARRYWTEST	1	5/27/2011 7:...
Decide	Complete	100%	W-LARRYWTEST	1	5/27/2011 7:...
Decide	Complete L...	0%	W-LARRYWTEST	1	5/27/2011 7:...
Decide	Complete L...	0%	W-LARRYWTEST	1	5/27/2011 7:...
Decide	Complete L...	0%	W-LARRYWTEST	1	5/27/2011 7:...
Encode	Complete L...	0%	W-LARRYWTEST	3	5/27/2011 7:...
Encode	Stopped b...	0%	W-LARRYWTEST	3	5/27/2011 7:...
Examine	Complete L...	0%	W-LARRYWTEST	2	5/27/2011 7:...
Examine	Complete	100%	W-LARRYWTEST	2	5/27/2011 7:...

Options When an action in action the table is selected, select the Options column heading menu and select Stop | Restart. Or, right-click directly on the job, and select Stop | Restart.

Highlight State Rows Click Highlight State Rows to highlight failed and stopped actions rows using the color representing its state (red for failed and magenta for stopped). Click Highlight State Rows again to remove highlighting.

Show Error Details Click Show Error Details to display the errors of a selected action. The action selected must be a failed action.

Show Filters Click Show Filters to display a menu of filters at the top of each column. Select a filter from the drop-down menu to be applied to that column.



Job Status Views

Click *Job Status Views* to start the Job Status Web application. (See the Job Status User Guide for instructions on how to use this application.)

Figure 19. Job Status Views

Job	State	Total Progress	Started	Updated
Manual Submit: 5	Complete	100%	5/5/2011 12:03:04 PM	5/5/2011 12:03:25 PM
Manual Submit: 5J	Failed	100%	5/5/2011 1:21:54 PM	5/5/2011 1:22:02 PM
Manual Submit: 6C	Complete	100%	5/5/2011 1:22:27 PM	5/5/2011 1:23:48 PM
Manual Submit: AI	Complete	100%	5/5/2011 12:50:27 PM	5/5/2011 12:51:06 PM
Manual Submit: BI	Complete	100%	3/29/2011 2:41:43 PM	3/29/2011 2:41:48 PM
Manual Submit: D	Complete	100%	3/29/2011 1:21:17 PM	3/29/2011 1:21:31 PM
Sdk Submit: a test	Failed	100%	4/3/2011 4:15:44 PM	4/3/2011 4:15:48 PM
Sdk Submit: Alan T	Failed	100%	3/30/2011 4:05:20 PM	3/30/2011 4:05:25 PM
Sdk Submit: My te	Failed	100%	4/3/2011 3:03:12 PM	4/3/2011 3:03:15 PM
Sdk Submit: Rod's	Failed	100%	4/3/2011 4:22:22 PM	4/3/2011 4:22:28 PM

Click *Vantage Dashboard* to return to the Web Dashboard application

To return back to the Web Dashboard, click *Vantage Dashboard*.



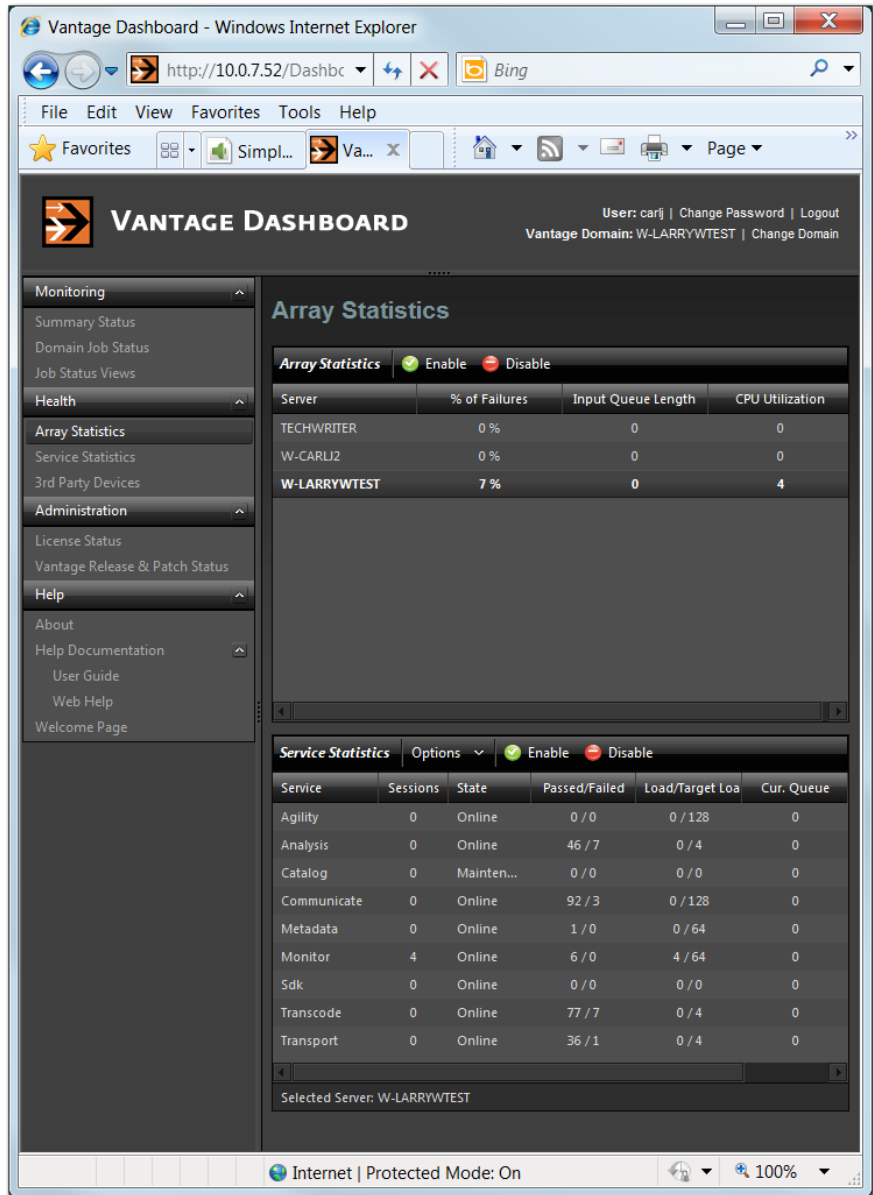
WEB DASHBOARD HEALTH

The Dashboard also provides three kinds of system health monitoring: Array Statistics, Service Statistics, and Third Party Devices.

Array Statistics

Array Statistics display the percentage of failure at the server (array) level.

Figure 20. Array Statistics



Array Statistics Panel

The Array Statistics panel displays the percentage of failures, input queue length, and CPU utilization for all Vantage servers. Select a server to



display its services, and some statistical information in the [Service Statistics Panel](#).

The server list can be sorted based on any of the statistical information columns. To do this click on any column heading (CPU utilization, etc.). The first click sorts the servers in ascending order of the information in that column. The second click sorts the them in descending order.

Figure 21. Array Statistics Panel

Server	% of Failures	Input Queue Length	CPU Utilization
TECHWRITER	0 %	0	0
W-CARLJ2	0 %	0	0
W-LARRYWTEST	0 %	0	4

Disable Click Disable to stop all services on the selected server. This allows you to make changes to the services as required (enter maintenance mode).

Enable Click Enable to re-start all services on the selected server (exit maintenance mode).

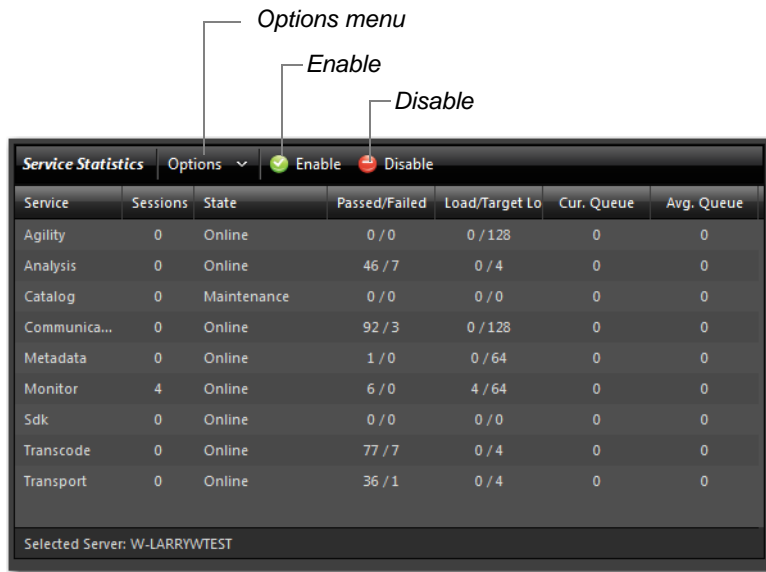
Service Statistics Panel

When a server is selected in the [Array Statistics Panel](#) (shown above), all services employed by that server are displayed in a list. Statistical information is also displayed for each service.



The list of services can be sorted based on any of the statistical information columns. To do this click on any column heading (Sessions, State, etc.). The first click sorts the services in ascending order of the information in that column. The second click sorts the them in descending order. A third click removes sorting and returns to the grid default sort criteria

Figure 22. Service Statistics Panel



Options Select a service by clicking on a line in the list. Click Options and select an option from the pull-down menu. There are two options from which to choose:

- Clear (Reset) Selected Service Metrics History clears only the metrics history of the service selected.
- Clear (Reset) All Service Metrics History clears the metrics history of all the services.

Disable Click Disable to stop the selected service. This allows you to make changes to a service as required (enter maintenance mode).

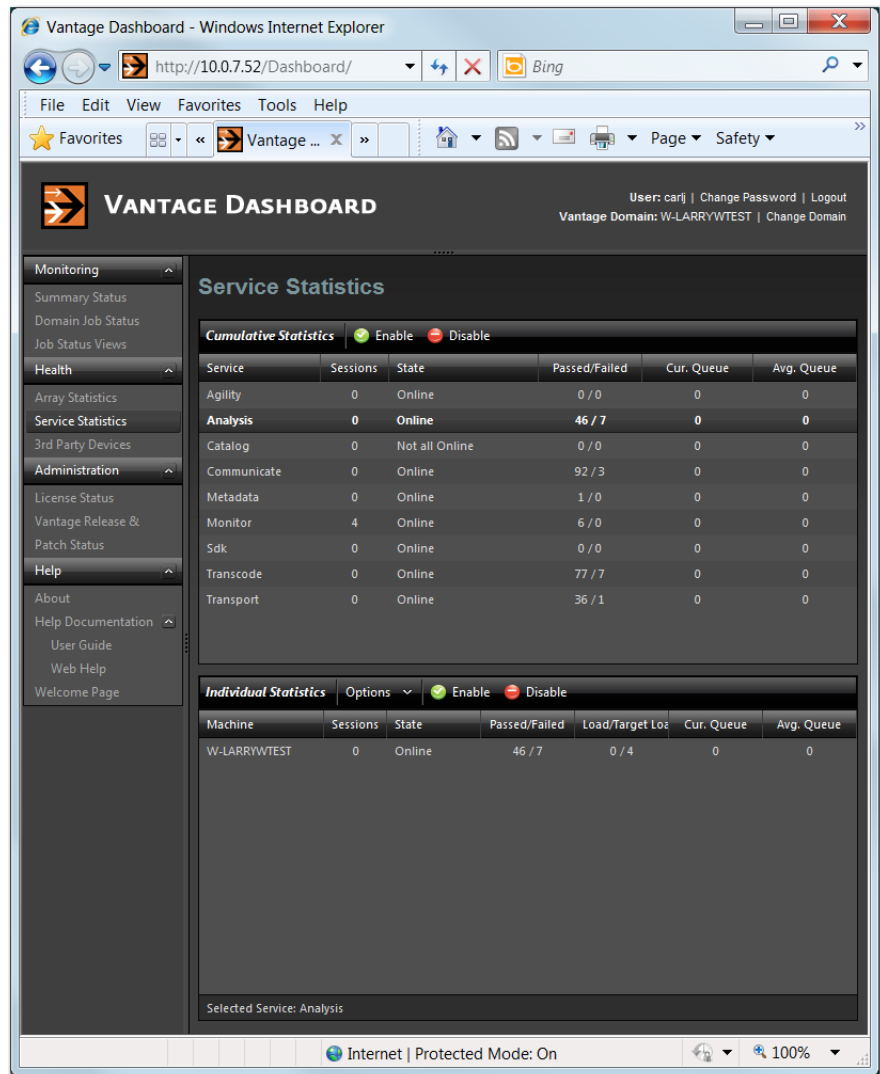
Enable Click Enable to re-start the selected service (exit maintenance mode).



Service Statistics

Service Statistics is a complementary display of Array Statistics. A list of services identical to the [Service Statistics Panel](#) (above) is displayed in the [Cumulative Statistics Panel](#). Selecting a particular service then displays the statistics for that service in the [Individual Statistics Panel](#).

Figure 23. Service Statistics



Cumulative Statistics Panel

In the Cumulative Statistics panel, all services are displayed in a list along with statistical information for each service.



The list of services can be sorted based on any of the statistical information columns. To do this click on any column heading (Sessions, State, etc.). The first click sorts the services in ascending order of the information in that column. The second click sorts the them in descending order. A third click removes sorting and returns to the grid default sort criteria

Figure 24. Cumulative Statistics Panel

Service	Sessions	State	Passed/Failed	Cur. Queue	Avg. Queue
Agility	0	Online	0 / 0	0	0
Analysis	0	Online	46 / 7	0	0
Catalog	0	Not all Online	0 / 0	0	0
Communicate	0	Online	92 / 3	0	0
Metadata	0	Online	1 / 0	0	0
Monitor	4	Online	6 / 0	0	0
Sdk	0	Online	0 / 0	0	0
Transcode	0	Online	77 / 7	0	0
Transport	0	Online	36 / 1	0	0

Disable Click Disable to stop the selected service. This allows you to make changes to a service as required (enter maintenance mode).

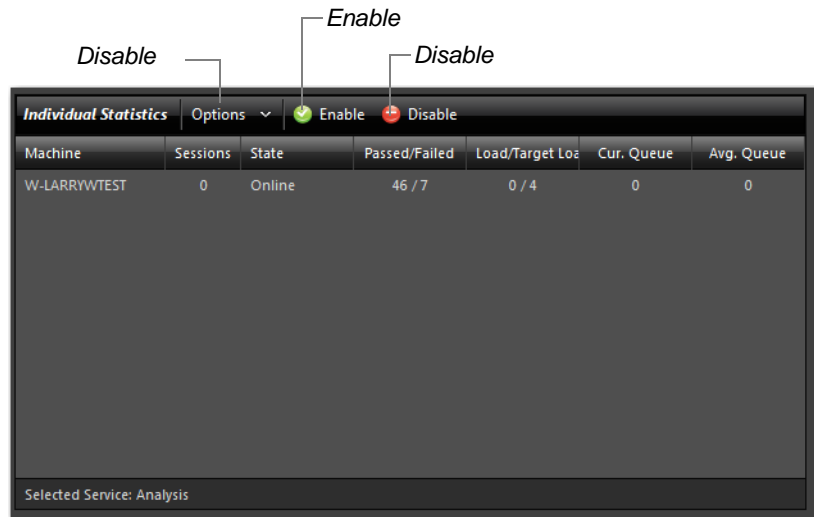
Enable Click Enable to re-start the selected service (exit maintenance mode).

Individual Statistics Panel

When a service is selected in the [Cumulative Statistics Panel](#) (shown above), all servers employing that service are displayed in a list. Statistical information is also displayed for each server.

The list of servers can be sorted based on any of the statistical information columns. To do this click on any column heading (Sessions, State, etc.). The first click sorts the servers in ascending order of the information in that column. The second click sorts the them in descending order. A third click removes sorting and returns to the grid default sort criteria



Figure 25. Individual Statistics Panel

Options Select a service by clicking on a line in the list. Click Options and select an option from the pull-down menu. There are two options from which to choose:

- Clear (Reset) Selected Service Metrics History clears only the metrics history of the service selected.
- Clear (Reset) All Service Metrics History clears the metrics history of all the services.

Disable Click Disable to stop all services on the selected server. This allows you to make changes to a service as required (maintenance mode).

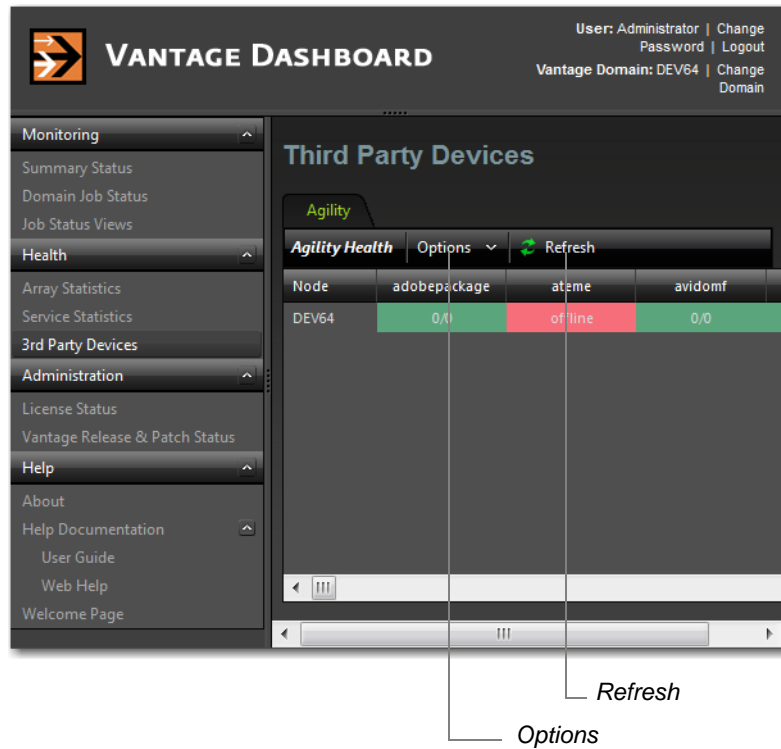
Enable Click Enable to re-start all the services (exit maintenance mode).



Third Party Devices

Third Party Devices provides access to the Agility health monitor, showing the health of each Agility server node and its corresponding success rate.

Figure 26. Third Party Devices



Options Select a service by clicking on a line in the list. Click Options and select an option from the pull-down menu. There are two options from which to choose:

- *Clear (Reset) Selected Service Metrics History* clears only the metrics history of the service selected.
- *Clear (Reset) All Service Metrics History* clears the metrics history of all the services.

Refresh Click the Refresh button to update Agility health information.



WEB DASHBOARD ADMINISTRATION

The Web Dashboard provides two types of administrative status: License Status and Release/Patch Status.

License Status

License Status displays Vantage license information and is very similar to the licensing data displayed in the Vantage Management Console. Five items of information are provided for each license.

Name The name of the license.

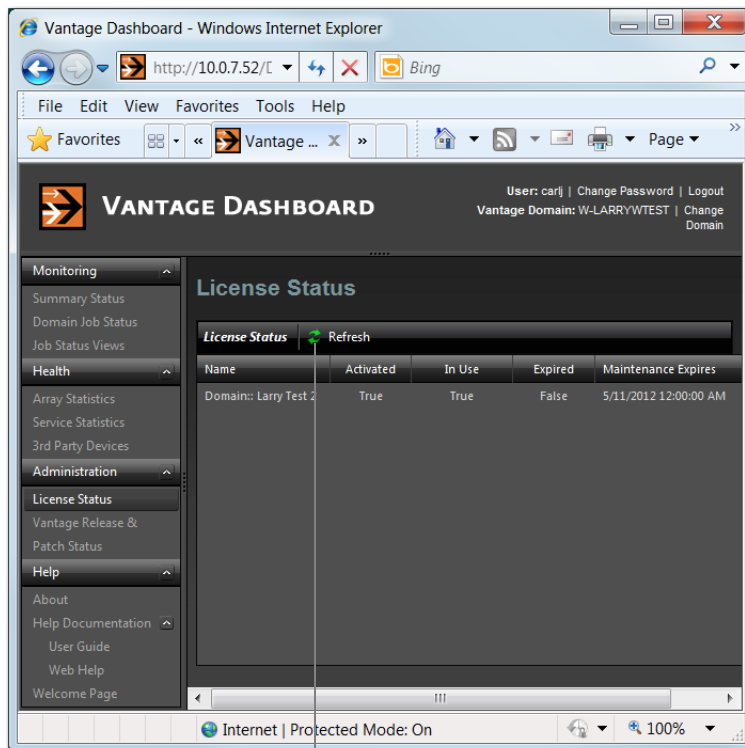
Activated The state of license activation (true or false).

In Use The state of license utilization (true or false).

Expired The state of license expiration (true or false).

Maintenance Expires Date and time that the maintenance expires.

Figure 27. License Status



Refresh

Refresh Click the Refresh button to update all license information.

Release and Patch Status

Release and Patch Status shows the current information about Vantage releases and plug-ins. Three items of information are provided for each plug-in.

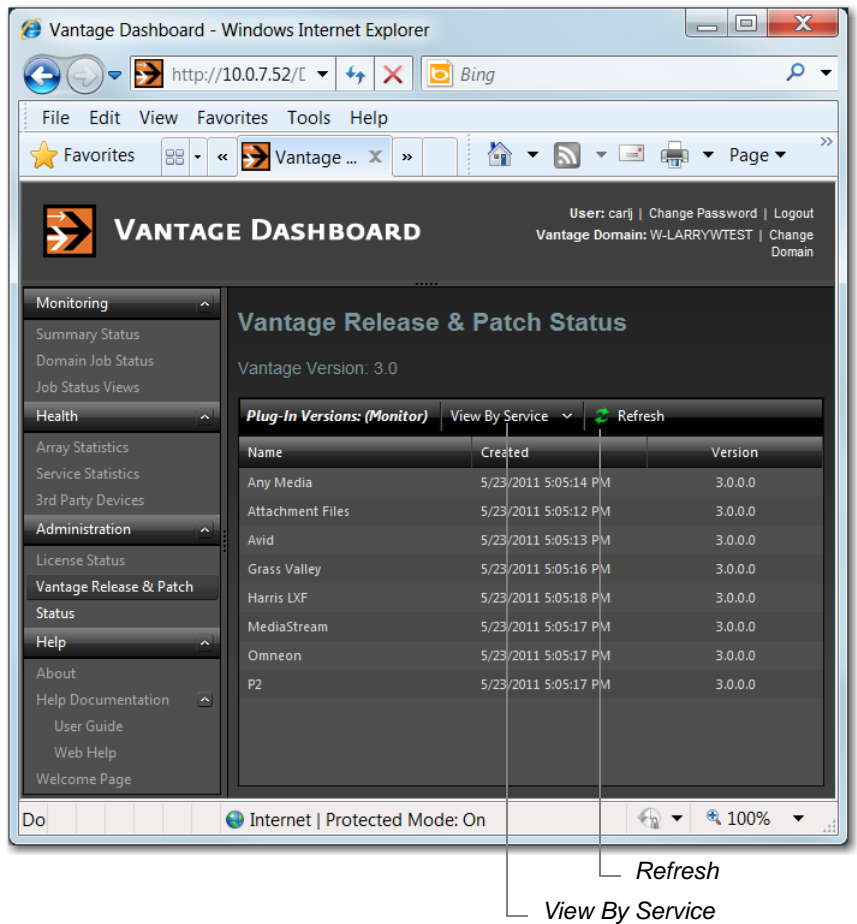
Name The name of the plug-in.



Created The date and time the plug-in was installed.

Version The plug-in version.

Figure 28. Release and Patch Status



View By Service Click View By Service to select the service to be displayed.

Refresh Click the Refresh button to update all plug-in information.



WEB DASHBOARD HELP

The help system for the Dashboard includes: Information about the Web Dashboard, on-line help documentation, and access to the welcome screen.

About

Click About to display version information about the Web Dashboard:

Figure 29. About Dialog Box



Help Documentation

The Web Dashboard provides help in two different formats: the user's guide (the document you are reading) in PDF format, and the user's guide in HTML help format.

User Guide

Click User Guide to display the Web Dashboard user guide in PDF format.

Web Help

Click Web Help to display the home page of an on-line Web help system. This help system provides index and search ability to navigate to any topic in the Dashboard User Guide.

This on-line help system consists of two panels:

- The left panel which has four tabs:
 - **Contents tab** This tab displays a hierarchically organized set of chapters and pages. This list provides a wide range of overview and how-to topics that explain how to add, configure, and manage Vantage components.
 - **Index tab** This tab provides a list of keywords you can click to display its associated page.
 - **Search tab** Looks for specific words or phrases, resulting in a display of topics that match your search criteria.



- **Favorites tab** lists favorite topic that have been saved by adding them to the list. Topics are added by clicking the Add button.
- The right panel displays the page you have selected from one of the tabs on the left.

Welcome Page

Click Welcome Page to display the welcome page that is presented when the Web Dashboard is first started up. This page displays descriptions of all the menu items for the Web Dashboard.



