

GLIM 2.3



Release Notes

The official release build of GLIM is: **2.3.0.2363**

Date **3rd August 2023**

About This Release

The primary purpose of this release is to address many small improvements that enhance the user experience.

It is recommended that customers upgrade to this version of GLIM, enabling users to take advantage of the new feature set. Please review the “Known Issues” section of this document before upgrading, to make sure this does not disrupt any of your workflows.

Now on Linux, running in AWS

This release GLIM supports Linux as well as Windows operating systems. This enables GLIM to be deployed to an AWS EC2 compute instance. Customers can now run GLIM on significantly more cost-effective compute instances, with the same functionality that is available on Windows.



Operating System Support.

- Windows Server 2016 & 2019
- AWS EC2 Linux base on “Ubuntu Server 20.04 LTS”. (Delivered as an AMI)

GLIM Appliance GPU Support

Glim 2.3 has been qualified on both the Glim G6 Appliance (Gen 1) (Nvidia P4) and the Glim Appliance (Gen2) utilizing Nvidia RTX 4000 or RTX A4000. The driver used for qualification was 471.41

Note: Users upgrading from previous versions of Glim will need to go into the GLIM settings and reset the GPU Quality setting (Low medium or High)

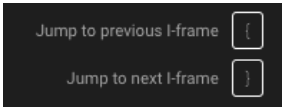
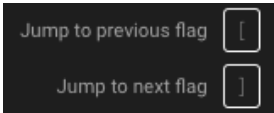
Upgrading from previous versions of GLIM

Telestream test the upgrade process from the last 2 released versions of GLIM (2.1 & 2.2). If you run an earlier version of GLIM, it is recommended to upgrade to one of these versions first and then upgrade to 2.3.

Feature Highlights

- Significant Performance improvements in Live Edit mode, enabling a better user experience when using Open files from Lightspeed Live Capture.
- Added Timecode Type “Frame Count”.
- API improvements, Ability to cue the timeline, specifying the play head start time.
- Added Plugins for connectivity to Telestream Vantage for clip extraction.
- Tech Preview. Customizable UIs via Clip Link URL’s

New Features & Improvements

GLIM-1794	<p>New Feature Added timecode Type “Frame Count”</p> <p>This new timecode type, provides the user with the frame number as timecode. Please note that the 1st frame of media is frame 0.</p>
GLIM-1875	<p>New Feature Added Clip List Plugins, enabling integration with Telestream Vantage for Clip extraction.</p> <p>Plugins include:</p> <ul style="list-style-type: none"> • Send CML Segments to Vantage API • Send CML Via Vantage API <p>An explanation of how to use these plugins can be found in the GLIM Customer support site. https://dynamic.telestream.net/downloads/login.asp?prodid=glim&message=login</p>
GLIM-1958	<p>New Feature Ability to Cue the timeline via a cliplink url.</p> <p>It is now possible to specify in a clip list url ,the position of the playhead in frames. To enable this please us the new parameter “playheadOffset= 250” (Value in frame number)</p> <p>Please note that the parameter is case sensitive and the “O” should be uppercase.</p>
GLIM-1975	<p>Improvement Ability to cycle through I-frames using keyboard shortcuts.</p> <p>It is now possible to cycle through I-frames using the following keyboard shortcuts</p> 
GLIM-1602	<p>Improvement Ability to cycle through markers on the timeline</p> <p>Keyboard shortcuts that enable users to cycle through SCTE 35/104, Neilson & Annotation markers.</p> 

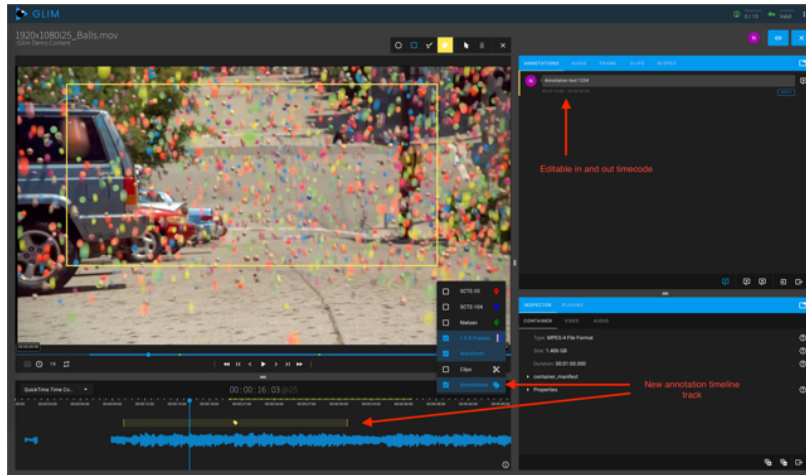
GLIM 2.3 Release Notes

[GLIM-2033](#)
[GLIM-1913](#)

Improvement Ability to use In-point and out-points to specify Annotations.

Previously it was only possible to specify a single frame to add an annotation, it is now possible to select and in point and outpoint, specifying a series of frames.

The in and out timecodes are specified under each annotation and a new timeline track has been added to show where in the content the annotation has been added. The applies to both text and shape objects.



[GLIM-1667](#)

Improvement Ability to load Clip List JSON files via the File Browser.

.

[GLIM-1771](#)

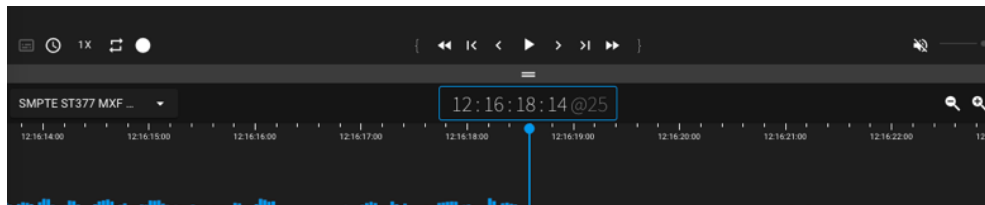
Improvement When opening media which is in a growing state, we default to Open Mode.

Previously you had make sure you opened a growing clip from Lightspeed Live Capture in “Open mode” This is now done automatically

[GLIM-1833](#)

Improvement Added capability to be able to copy and paste timecode from the timeline pane.

It is now possible to copy the current timecode to the clipboard. Select the timecode and a blue box will appear. You can then copy and paste the timecode into other application.

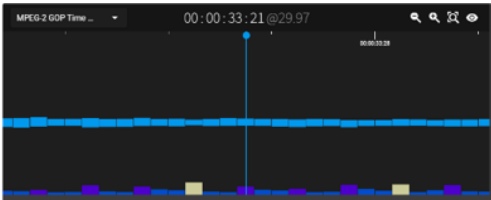


[GLIM-1845](#)

Improvement Add capability to redirect to Clip link content once logged in.

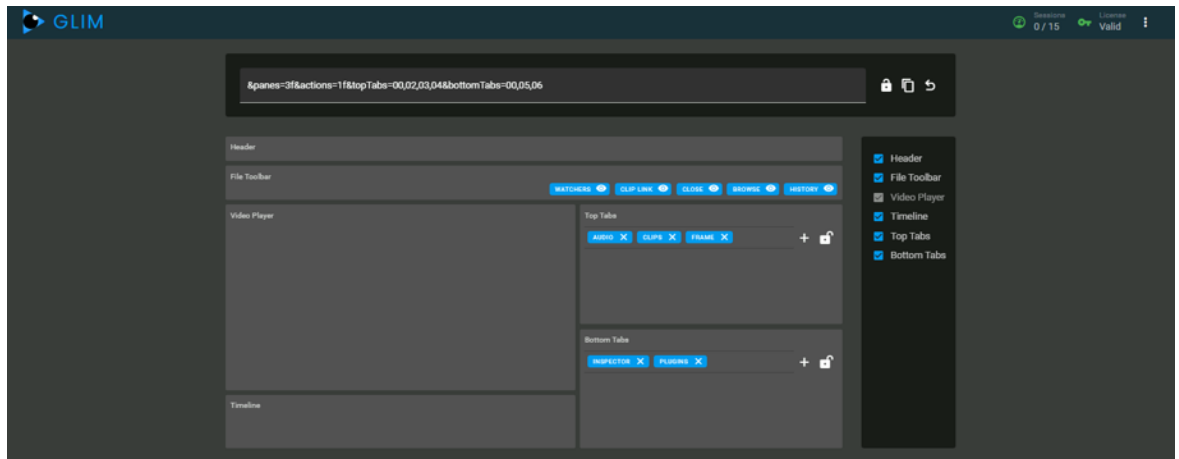
Previously if a clip link was used and the user was not logged in, Glim would go to the login page, the user would login and the linked clip would not load. Glim now retains the link to the media once the user is logged in.

100

GLIM-1854 GLIM-1884	<p>Security update.</p> <p>When entering passwords when generating location alias's, the password was in plain text. This is now obscured, and the plain text can be switched on if necessary with the "eye" icon</p>
GLIM-1856	<p>Improvement Allow users to have clips auto start when opened via Clip Links.</p> <p>A new parameter in the API has been implemented, enabling developers to specify cliplink url's which contain a new parameter "autoplay" this will enable the clip to autoplay.</p> <p>Eg Clip link with Parameter: http://glimserver:5000/?path=%25filename.mxf&track=2&soundfield=Stereo&left=0&right=1&subtitle=CEA-608%20CC1&filebrowser=false&autoplay#/ </p> <p>Note: There are some restrictions with the chrome browser that does not allow video clips with audio "Autoplay"</p>
GLIM-1886	<p>Improvement GOP Display</p> <p>The GOP (Group of pictures) track in the mini timeline has been improved, so when zoomed in the GOP Zooms at the same rate as the wave form. The Play head line also now aligns to the centre of the frame.</p> 
GLIM-1887	<p>Improvement SCTE-35 \ SCTE-104 \and Neilson markers can now be seen at all zoom levels in the timeline.</p> <p>To increase display performance the GOP display becomes invisible when you zoom out to a certain level, previously we also Hide SCTE and Neilson markers too. These are now visible at all zoom levels</p>

[GLIM-1987](#)

New Feature Ability to specify which parts of the UI are viewable via a URL Query parameter.



This new feature allows users to generate clip link URLs, that specify the specific layout of the GLIM UI. The new “layout” page enables users to specify which elements of the UI they want the user to see. Users then append the parameter as plain text or a base64 string to the clip link URL. This enables customers to control Glim programmatically and insert the GLIM player into their own web pages.

The layout page can be found at <http://GLIMSERVERNAME:5000/#/layout>

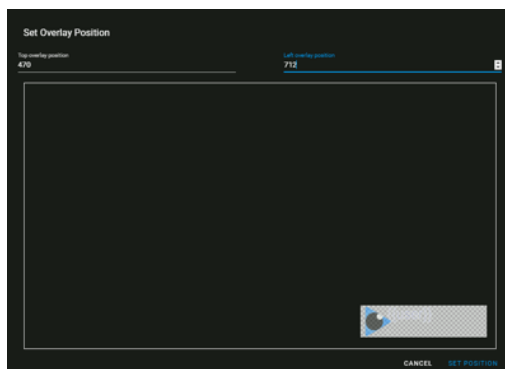
Note: This is an experimental feature and is not yet documented in the user guide.

[GLIM-1889](#)

[GLIM-1951](#)

Improvement Video overlays / watermarks.

Video Overlays are now much improved. Overlays now scales to all resolutions (up to 4K) A new settings dialog has been implemented, enabling users to change the position and scale over the overlay. This can be found in settings under “Overlay”



[GLIM-1951](#)

Improvement Video overlays / watermarks placement.

GLIM now prevents overlay placement from allowing users to have overlay outside the active video placement area.

GLIM 2.3 Release Notes

[GLIM-1924](#)

Improvement Add button to return mini timeline to default zoom level.

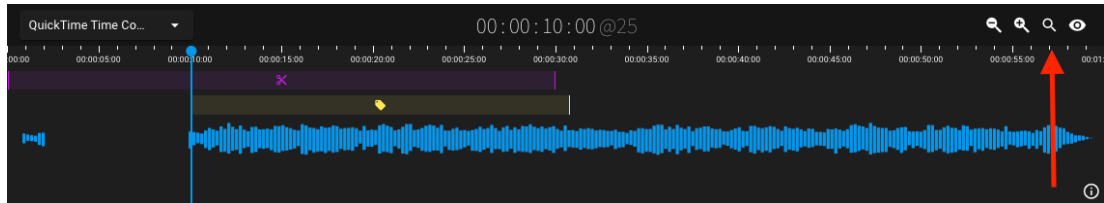
You can now toggle the zoom button in the timeline to zoom to the entire clip and then back to the default zoom level.



Zoom to entire clip



Zoom to default Zoom level



[GLIM-1930](#)

Improvement Annotations are now available as default as a Technical preview

Annotations no longer need to be switched on via a special url. To switch Annotations on got to settings / Experimental features and enable Annotations.



[GLIM-1931](#)

Improvement Auto clear search field for UI to add sidecar audio.

When using search in the file browser, we now clear the search criteria when going into subfolders. This behaviour was changed as users were finding it difficult to find content as the search was still populated, so the user could not see all files in the subfolder.

[GLIM-1936](#)

Improvement Align audio waveform in mini timeline with the GOP and markers.

The playhead is now aligned between audio waveform and the GOP display in the mini timeline.

Note: There is a limitation. The limitation is that if you jump to a non-buffered section the alignment will be off until you step to the next frame. If you step through frames, jump to a buffered section of content, or play and then pause the playback the alignment is correct.

[GLIM-1940](#)

Improvement Added option to show/hide the cliplist indicators in the mini-timeline.

Resolved issues

GLIM-1994	<p>When opening growing file traditionally, error message is thrown</p> <p>When opening an open clip in closed mode, an error is thrown. This has now been resolved.</p>
GLIM-1055 <ul style="list-style-type: none"> • 	<p>Resolved issue were some AVC MXF files were not opening in GLIM.</p>
GLIM-1345	<p>Resolved Issue where Audio starts a couple of frames early</p>
GLIM-1810	<p>Resolved Issue with customer provided MXF files with rollup closed caption.</p> <p>The rollup captions would display, but for would disappear very quickly and not stay up for the specified duration.</p>
GLIM-1818	<p>Resolved Issue with Captions in .ts files</p> <p>Issue occurred where captions were in the source file, however GLIM did not recognise captions were available and the caption button would not light up.</p>
GLIM-1830	<p>Resolved Issue with 608/708 Captions</p> <p>Fixed issue where captions in transport stream files were not playing correctly.</p>
GLIM-1850	<p>Resolved Issue with Audio dropouts and freezing playback on certain clips when running on AWS EC2 compute.</p> <p>Note: Additional logging is now provided to determine when a clip stops buffer when there is still content to buffer.</p>
GLIM-1993	<p>Resolved issue where the “Image link” plugin was broken when processing open clips.</p>
GLIM-1989	<p>Resolved issue with opening a closed file in open mode causes Glim to display wrong duration.</p>
GLIM-1907	<p>Resolved issue where a session never times out.</p> <p>if a user left a Glim window open with a clip stopped at the end of the clip the session isn’t released.</p>
GLIM-2061	<p>Resolved issue with Insufficient performance when playing Live Capture live recordings.</p>

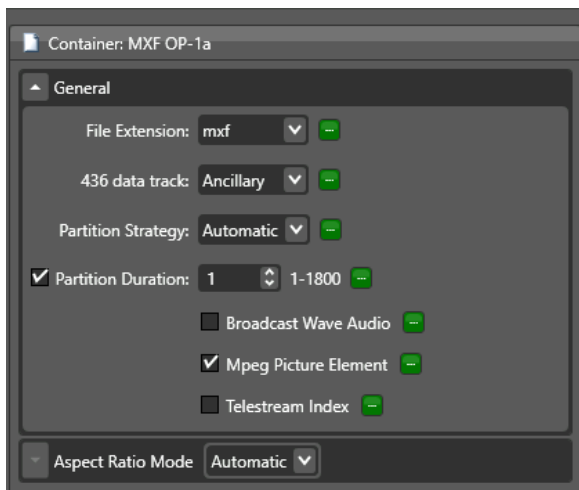
Known Issues

GLIM-1492	Captions with open sources stop playback after a short amount of time.
GLIM-1413	GOP Display isn't shown correctly after playing content for a while. After playing content out for a while with the GOP view zoomed out to max the yellow color for the GOP changed to gray. If you zoom in a bit the color returns. When you first start playing the clip there is no issue.
GLIM-1401	Some source files are causing scopes not to be drawn correctly.
GLIM-1249	When using the "Go to" feature the timecode will go back a frame when you change focus from the "Go to" box.
GLIM-1226	CML Generated by "Clip List" plugins fails if zero based timecode is used in GLIM. Please note that we have changed the default timecode to the timecode that is at the Top of the timecode selection list.
GLIM-920	Open ingest of XAVC/MXF with an open copy from Capture is not working correctly with Glim.
GLIM-1798	License expiration warning not generated with Glim AMI's based on Linux In the windows version of GLIM, the user will receive a message saying the subscription will expire in x number of days 1 month before the subscription runs out. This currently does not work on the Linux OS.
GLIM-1799	UI becomes sluggish after having open content up and playing for 2+ hours.
GLIM-2043	License expiration notifications aren't working for 30 and 60 days out.

Live Edit Input Format Recommendations / Limitations

When using GLIM in “Live Edit” mode it is recommended that users configure the output from Lightspeed Live capture using the MXF OP1a wrapper. GLIM can ingest both Open TIFO and Open MXF however when sending the resulting CML to Vantage, the proceeding Vantage workflow will fail if referencing a Growing TIFO (Unless the CML is submitted to a conform action, rather than directly to IPTV / Multiscreen or FLIP64) If you use MXF, this works as expected. This will be resolved in a Vantage component Pac release soon.

It is recommended that when using MXF, please use the below MXF Partition settings.



Annotations (Tech Preview)

“Annotations” enables users to review content, allowing frame-based metadata to be added to content. Users can now draw on content to highlight areas of a shot and add notes, if multiples users are logged on, then a conversation about a particular frame can be had and recorded.

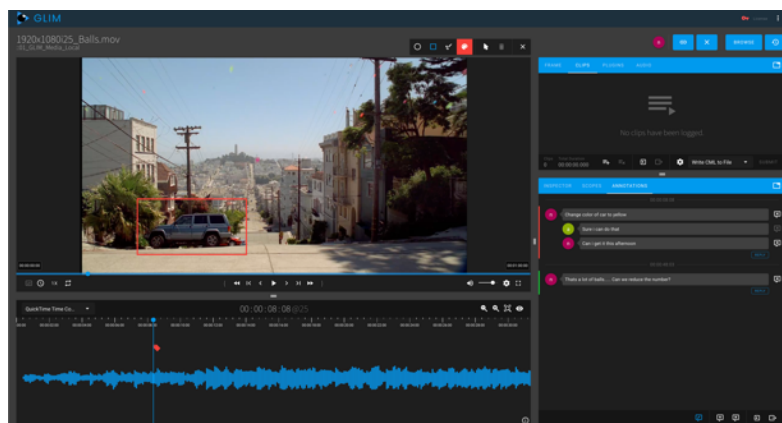


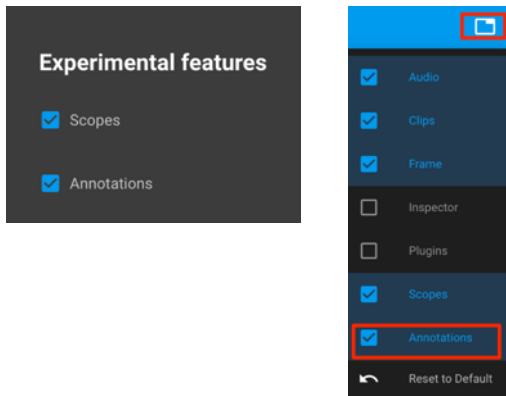
Fig 1. Annotations interface

GLIM 2.3 Release Notes

Getting Access to the Annotations feature.

As “Annotations” is in Tech Preview mode and should not be used in a production environment.

Please access the bottom of the settings page and turn on the “Annotations” experimental feature at the bottom of the page. Once selected you can then add Annotations to panes via the folder icon.



How to get access to the Linux AMI for provisioning in AWS EC2.

Glim is now available on Linux for customers that wish to use GLIM on AWS EC2 compute. Running on Linux gives considerable cost savings to customers, reducing compute costs by up to 50%.

If you require access to the GLIM 2.3 AMI, please get in touch with your Telestream account manager and we will provide you access to the AMI. We will need to know your AWS Account Number and which region you wish to run the Ec2 instance.

Note: The GLIM AMI has been configured to run on Port 80, instead of the default port 5000 in the windows installer. This can be changed if required.

Suggested Compute Platforms

The type of compute required is dependent on many factors, including Source type and encode settings used in GLIM. Users need to be mindful on the compute performance required and the network performance requirement to transit media from Storage to the EC2 Compute Instance.

It is highly recommended that the compute is provisioned as close to the content as possible, so we suggest provisioning the EC2 compute in the same AWS Data Centre to where the media resides.

GLIM 2.3 Release Notes

Please see below the recommended instance types.

NO. OF GLIM SESSION	INSTANCE TYPE	VCPUS	MEMORY (GIB)	NETWORK PERFORMANCE	ON-DEMAND LINUX PRICING	ON-DEMAND WINDOWS PRICING
1-2 SESSIONS	c6i.2xlarge	8	16	Up to 12.5 Gigabit	0.404 USD per Hour	0.772 USD per Hour
5 SESSION (LOW BITRATE SOURCE)	c6i.4xlarge	16	32	Up to 12.5 Gigabit	0.808 USD per Hour	1.544 USD per Hour
5 SESSION (HIGH BITRATE SOURCE)	c6i.8xlarge	32	64	12.5 Gigabit	1.616 USD per Hour	3.088 USD per Hour

All prices are based on AWS on-demand pricing as of 21st Sept 2022

Please note that GPU acceleration in Linux is not currently supported.

Plugin Developers Guide

In the plugins directory (C:\Program Files\Telestream\GLIM\plugins\docs) you will find a new Plugin development guide that explains any changes that have been made to the plugin infrastructure, along with a simple guide explaining how you would get started.