

# GLIM 2.4



## Release Notes

The official release build of GLIM is: 2.4.2443

Date 30<sup>th</sup> November 2023

### About This Release

The primary purpose of this release is to address many small improvements that enhance the user experience.

It is recommended that customers upgrade to this version of GLIM, enabling users to take advantage of the new feature set. Please review the “Known Issues” section of this document before upgrading, to make sure this does not disrupt any of your workflows.

### Now on Linux, running in AWS

This release GLIM supports Linux as well as Windows operating systems. This enables GLIM to be deployed to an AWS EC2 compute instance. Customers can now run GLIM on significantly more cost-effective compute instances, with the same functionality that is available on Windows.



### Operating System Support.

- Windows Server 2016 & 2019
- AWS EC2 Linux base on “Ubuntu Server 20.04 LTS”. (Delivered as an AMI)

## GLIM Appliance GPU Support

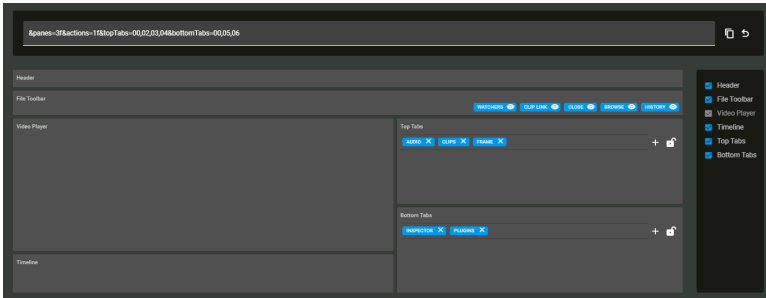
Glim 2.3 has been qualified on both the Glim G6 Appliance (Gen 1) (Nvidia P4) and the Glim Appliance (Gen2) utilizing Nvidia RTX 4000 or RTX A4000. The driver used for qualification was 471.41

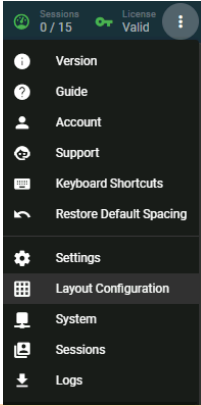
**Note:** Users upgrading from previous versions of Glim will need to go into the GLIM settings and reset the GPU Quality setting (Low medium or High)

## Upgrading from previous versions of GLIM

Telestream test the upgrade process from the last 2 released versions of GLIM (2.1, 2.2 & 2.3). If you run an earlier version of GLIM, it is recommended to upgrade to one of these versions first and then upgrade to 2.3.

## New Features & Improvements

<b>GLIM-1987</b>	<b>Implement the ability to specify which parts of the UI are viewable via url query parameters.</b> 
<b>GLIM-1996</b>	Support for PNG image overlays (specifically 24 bit sources).
<b>GLIM-2057</b>	Add UI link to the layout page in the Glim general three dot button in the upper right corner.

<p><b>GLIM-2079</b></p>	<p>Files with '+', '(', or ')' characters in the filename fail to open in Glim.</p>	
<p><b>GLIM-2085</b></p>	<p>Add date to the name of the log files.</p>	

## Resolved Issues

<p><b>GLIM-1505</b></p>	<p>Resolved Issue where the Glim UI becomes unresponsive after playing open MXF and Tifo content back for long periods of time. (50+ mins)</p>
<p><b>GLIM-1665</b></p>	<p>Resolved Issue when using a Glim Linux AMI. The Nielsen audio markers were not showing up in the timeline window.</p>
<p><b>GLIM-1985</b></p>	<p>Resolved issue, enabling PNG image files to be opened in GLIM</p>
<p><b>GLIM-2089</b></p>	<p>Resolved issue where Clip Links were not working when in open mode.</p>
<p><b>GLIM-2037</b></p>	<p>Resolved Issue: When attempting to jump to the last marker (SCTE/Nielsen) the setting will not work if you are currently on another marker.</p>
<p><b>GLIM-2043</b></p>	<p>License expiration notifications aren't working for 30 and 60 days out.</p>
<p><b>GLIM-2062</b></p>	<p>Resolved issue: regression issue when playing customer supplied Transport stream files .</p>
<p><b>GLIM-2069</b></p>	<p>Resolved Issue when referencing “Open” TIFO content in open mode</p>
<p><b>GLIM-2072</b></p>	<p>Resolved issue where Glim Links created by Live Schedule Pro fail to open in Glim when Glim authentication is in use.</p>

<b>GLIM-2073</b>	Resolved Issue where GLIM 2.3 was repeating frame during Playback. This was reported a “Jumpy playback”
<b>GLIM-2087</b>	Resolved Issue where Image overlays did not scale correctly when playing some resolutions.

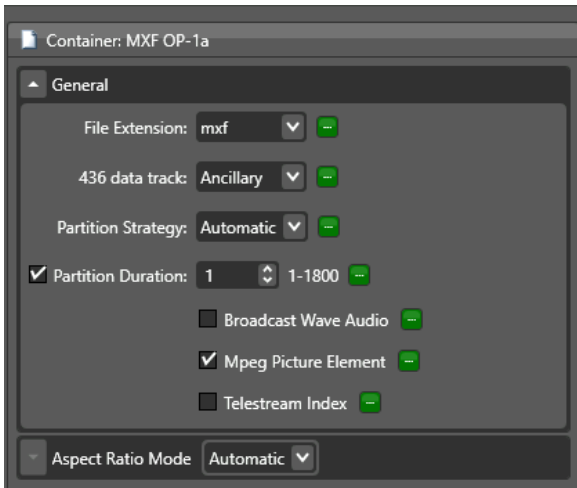
## Resolved Issues

<b>GLIM-2071</b>	<p>Windows authentication issue.</p> <p>Currently we have challenges with windows authentication.</p> <p>The first user logging in to the GLIM service work fine, however subsequent users can not login due to a .NET issue. If you need to use windows authentication it is advised that you use Glim v2.2.</p> <p><b>Telestream will be implementing a new authentication service in the next release of GLIM that will resolve this issue.</b></p>
<b>GLIM-1776</b>	<p>When using the LINUX AMI, we have cannot open Audio only content from an S3 bucket. This works fine on Windows based systems.</p>

## Live Edit Input Format Recommendations / Limitations

When using GLIM in “Live Edit” mode it is recommended that users configure the output from Lightspeed Live capture using the MXF OP1a wrapper. GLIM can ingest both Open TIFO and Open MXF however when sending the resulting CML to Vantage, the proceeding Vantage workflow will fail if referencing a Growing TIFO (Unless the CML is submitted to a conform action, rather than directly to IPTV / Multiscreen or FLIP64) If you use MXF, this works as expected. This will be resolved in a Vantage component Pac release soon.

It is recommended that when using MXF, please use the below MXF Partition settings.



## Annotations (Tech Preview)

“Annotations” enables users to review content, allowing frame-based metadata to be added to content. Users can now draw on content to highlight areas of a shot and add notes, if multiples users are logged on, then a conversation about a particular frame can be had and recorded.

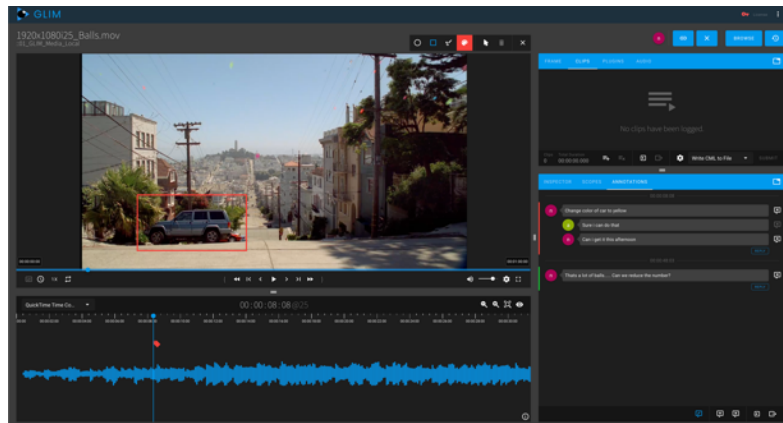
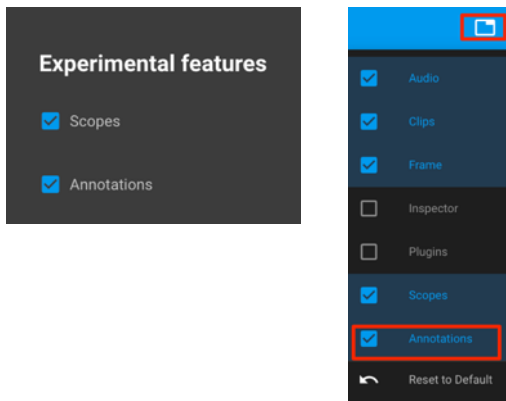


Fig 1. Annotations interface

## Getting Access to the Annotations feature.

As “Annotations” is in Tech Preview mode and should not be used in a production environment.

Please access the bottom of the settings page and turn on the “Annotations” experimental feature at the bottom of the page. Once selected you can then add Annotations to panes via the folder icon.



## How to get access to the Linux AMI for provisioning in AWS EC2.

Glim is now available on Linux for customers that wish to use GLIM on AWS EC2 compute. Running on Linux gives considerable cost savings to customers, reducing compute costs by up to 50%.

If you require access to the GLIM 2.4 AMI, please get in touch with your Telestream account manager and we will provide you access to the AMI. We will need to know your AWS Account Number and which region you wish to run the Ec2 instance.

**Note:** The GLIM AMI has been configured to run on Port 80, instead of the default port 5000 in the windows installer. This can be changed if required.

## Suggested Compute Platforms

The type of compute required is dependent on many factors, including Source type and encode settings used in GLIM. Users need to be mindful on the compute performance required and the network performance requirement to transit media from Storage to the EC2 Compute Instance.

It is highly recommended that the compute is provisioned as close to the content as possible, so we suggest provisioning the EC2 compute in the same AWS Data Centre to where the media resides.

Please see below the recommended instance types.

NO. OF GLIM SESSION	INSTANCE TYPE	VCPUS	MEMORY (GIB)	NETWORK PERFORMANCE	ON-DEMAND LINUX PRICING	ON-DEMAND WINDOWS PRICING
1-2 SESSIONS	<a href="#">c6i.2xlarge</a>	8	16	Up to 12.5 Gigabit	0.404 USD per Hour	0.772 USD per Hour
5 SESSION (LOW BITRATE SOURCE)	<a href="#">c6i.4xlarge</a>	16	32	Up to 12.5 Gigabit	0.808 USD per Hour	1.544 USD per Hour
5 SESSION (HIGH)	<a href="#">c6i.8xlarge</a>	32	64	12.5 Gigabit	1.616 USD per Hour	3.088 USD per Hour

BITRATE  
SOURCE)

All prices are based on AWS on-demand pricing as of 21<sup>st</sup> Sept 2022

*Please note that GPU acceleration in Linux is not currently supported.*

### Plugin Developers Guide

In the plugins directory (C:\Program Files\Telestream\GLIM\plugins\docs) you will find a new Plugin development guide that explains any changes that have been made to the plugin infrastructure, along with a simple guide explaining how you would get started.