

Lightspeed server update Release Notes

V-K20LS and V-K80LS GPU Driver Update

February 10, 2016

This Release Notes document describes the approved NVidia GPU drivers for Telestream Lightspeed, Lightspeed K20 and Lightspeed K80 1RU servers.

Lightspeed (V-LSK80)* and Lightspeed K20 (V-LSK20)*

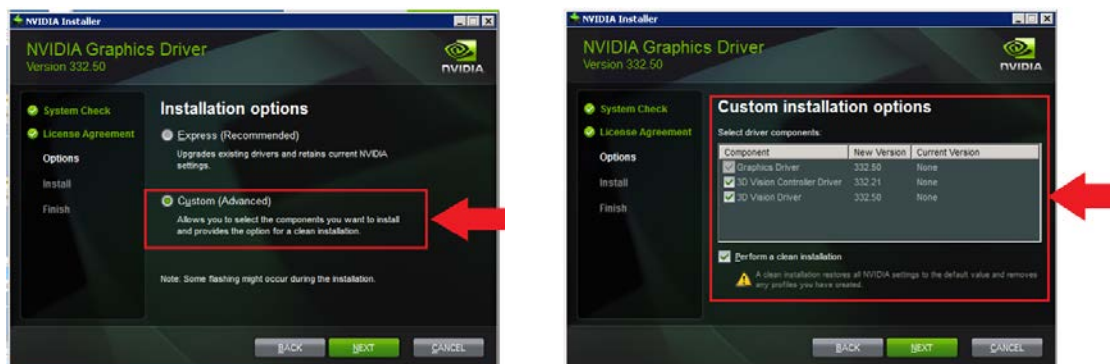
- Lightspeed K20 server equipped with NVidia K20M GPU now support the following GPU drivers:
 - NVidia V320.78
 - NVidia V332.50
 - NVidia V354.56 ([download](#))
- Lightspeed K80 server equipped with NVidia K20M GPU now support the following GPU drivers:
 - NVidia V341.44
 - NVidia V354.56 ([download](#))

*Refer to Lightspeed, Lightspeed K20 and Lightspeed K80 operating specs for server details ([here](#))

Update instructions

NVidia V354.56 Driver Installation instructions:

- 1) Download the NVidia V354.56 Installer ([download](#) - 354.56-tesla-desktop-winsrvr2008-2012r2-64bit-international-whql.exe)
- 2) Run the installer
- 3) During installation choose the “Custom” option instead of express
- 4) Check the box for “Clean Installation”
- 5) Proceed with all default options as they appear.
- 6) Step through the installer until complete.
- 7) Upon completion Reboot the server.
- 8) Log into your Vantage server and locate the BANDY.EXE executable.
 - a. BANDY.EXE can be found in the Vantage v6.3 UP5 download package, in the Installers folder of the Vantage DVD/USB drive or in the **C:\Bandy** folder of a Lightspeed K80 server.
- 9) Run the BANDY.EXE application by follow the installation instructions included with BANDY.



Support contacts

For technical support or User Guides, visit the Lightspeed support web site at <http://www.telestream.net/telestream-support/lightspeed/support.htm>