

The Teletream logo features the word "teletream" in a white, lowercase, sans-serif font. A blue curved line arches over the top of the letters "e" and "l".

teletream



WHAT'S NEW AT IBC 2023

## TELESTREAM UNVEILS NEXT-GEN SOLUTIONS FOR ON-PREM, HYBRID, AND CLOUD WORKFLOWS AT **IBC 2023**

The shift to cloud-native environments is transforming media workflows, offering scalable and cost-effective solutions across live media production, supply chain management, and distribution.

At this year's IBC Show, Telestream is introducing its latest innovations for on-prem, hybrid, and cloud workflows that make it easier than ever for media companies to create and deliver high-quality content, from anywhere, at any time. These solutions are built for flexible content creation and delivery for live production, sports, media supply chain, and distribution.



## MEDIA PRODUCTION

Our media production solutions are designed for live production, as well as testing and measurement in sports, broadcast, and post production. These offerings are designed for SDI, IP, and hybrid production environments. These production tools prioritize flexibility and quality so teams can reliably produce premium content with confidence.



### **NEW PRISM MPP**

*SDI and hybrid SDI/IP waveform monitoring for high-quality post production and UHD audio/video*

- 1 RU PRISM Rasterizer
- Near silent operation
- Supports efficient color grading for HDR content creation
- 8 Channel Audio Output and 4 SDI loop through inputs up to 12G
- WebRTC support for real-time remote monitoring across dispersed teams
- Consistent user interaction in SDI and IP systems, for SDR and HDR productions — perfect for studios and trucks

### **SPG9000**

*Sync generation, timing, and reference system for SDI, IP, and hybrid facilities*

- SDI Test Signal Generation
- Provides time synchronization to any network-attached device
- Easy integration into NMS for status and alarms
- Simplified PTP reference system with multi-truck production





## MEDIA PRODUCTION

### SPG9000 (continued)

- Integrated multi-GNSS, dual-band receiver and NMOS-enabled IP media sender
- Network Time Protocol server and client
- Simple Network Management Protocol support

### LIGHTSPEED LIVE CAPTURE

#### Scalable multi-channel capture and ingest solution

- Power live edit workflows with integrations into Avid and Adobe for growing files
- Software-only version now available
- Capture Live signals to disk in high quality
- API supports 3rd party control for stop/start (manual live edit)
- **NEW Live Schedule Pro** software add-on for Lightspeed Live Capture uses an intuitive web-based interface to coordinate events, feeds, and devices in real-time
  - o Sophisticated workflow orchestration and automation through Vantage integration
  - o Built-in subclipping and proxy-less playback through GLIM integration
  - o Preview feeds and receive instant updates and notifications to stay on top of ingest tasks



SPG9000



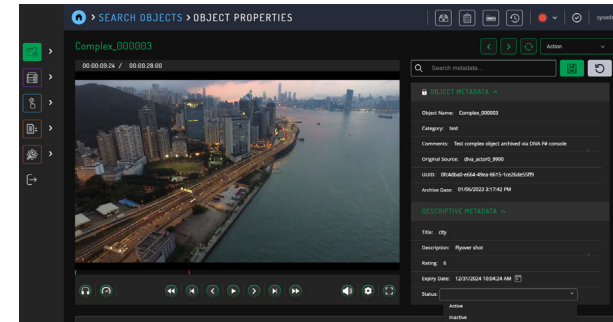
Lightspeed Live Capture

Lightspeed Live Server



# MEDIA SUPPLY CHAIN MANAGEMENT

On prem, in the cloud, or hybrid, our innovative media supply chain solutions empower broadcasters and content providers to thrive, wherever they are in their digital transformation. By automating essential processes and ensuring media availability, these media processing and workflow orchestration solutions help our customers lower costs, effectively allocate resources, and deliver the high-quality content that viewers love.



Content Conductor

## NEW CONTENT CONDUCTOR

*Intelligent cloud/hybrid/on-prem content management solution*

- Built on the powerful and stable DIVA Core
- Automated migration and archival of content to any cloud system
- Single point of access for external systems (MAM/PAM/Automation)
- Ideal for broadcasters, sports media producers, and small-scale production houses with substantial content libraries
- A perfect fit for large media organizations shifting to the cloud while retaining on-premises content storage systems
- Offers flexibility for future storage needs and strategy changes

## VANTAGE CLOUD (formerly Cloud Port)

*A no-code media processing workflow orchestration solution*

- Tailored for media firms and current Vantage users
- Cross conversions between SDR-to-HDR and HDR-to-SDR
- Ideal for cloud bursts and transitioning existing workflows to elastic cloud SaaS
- Integrates with Qualify for automated QC checks on media files



## MEDIA SUPPLY CHAIN MANAGEMENT

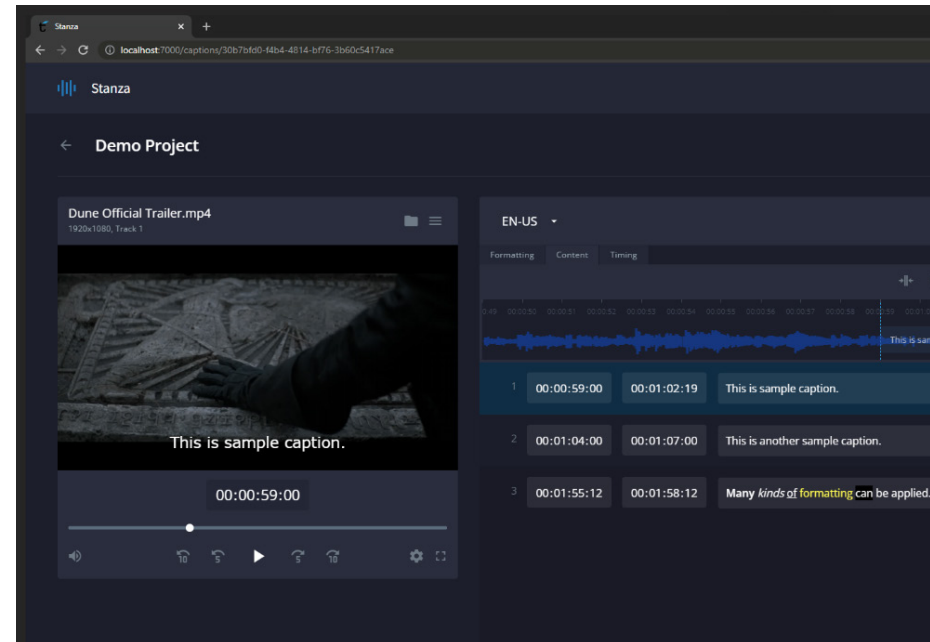
### VANTAGE CLOUD *(continued)*

- Automated Live/VOD DAI workflows via Vantage
- Automated subtitle creation and processing through Stanza integration
- Interface with 3rd-party web services

### STANZA WITH TIMED TEXT FLIP

#### *Automated caption creation and preparation workflows*

- Timed Text Flip can easily extract, transcode, and embed captions and subtitles
- Leverage the latest machine learning technology to accurately transcribe human speech into time-stamped text
- Convert captions and subtitles to various formats, frame rates, and display modes as needed for delivery
- Deliver sidecar files directly to Stanza project for easy editing



Stanza



## MEDIA DISTRIBUTION

Visibility, control, and compliance are critical for media distribution and video quality monitoring. With a single interface for linear and ABR service workflows, Telestream's distribution solutions provide centralized management across all critical points in the media distribution chain, including contribution feeds, transport streams, and ABR delivery.

### **NEW VANTAGE GATEWAY** *(formerly Encoding.com)*

*File-based cloud transcoding and packaging for broadcast/OTT*

- Full-Service Media Workflow management
- One API for transcode and QC
- Integrates with Qualify for automated QC checks on media files
- Flexible deployment models

### **QUALIFY**

*Cloud-native file-based QC workflow*

- Integrates with Vantage Gateway
- Uses programmatic interfaces for template and report creation
- Shortens delivery times and improves efficiency
- Reduces rework and increases consistency
- Cuts the time of delivering content with automated QC

## WHAT'S NEW



# MEDIA DISTRIBUTION

## ARGUS

### *Centralized video monitoring management platform*

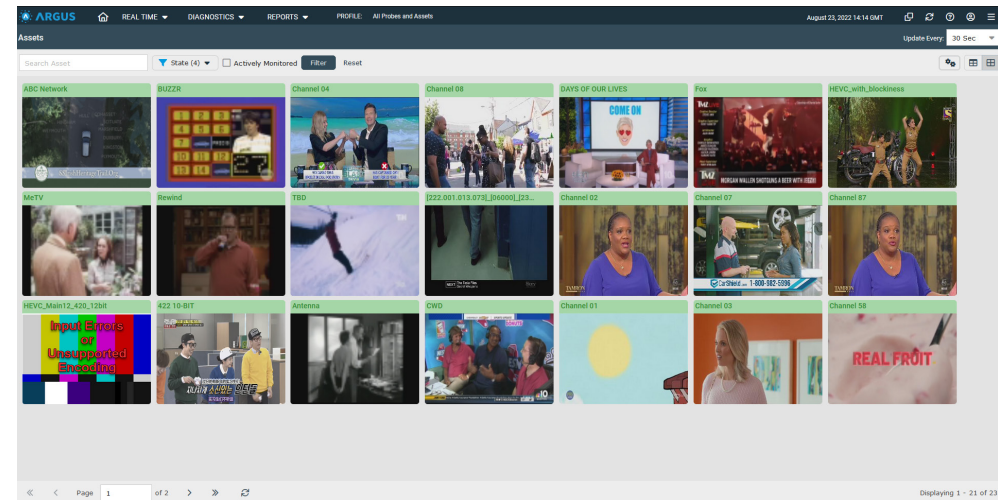
- Real-time quality assessment, analytics, and data aggregation
- High-level dashboards and detailed analytics
- Aggregates data from all probes in the video delivery chain
- Swiftly identify quality issues and root causes
- Flexible deployment model (cloud, virtual, & on-prem)
- Overcome unacceptable ad failure rates in the DAI era with ad quality management and ad performance monitoring
- Centralized, intelligent video management system for unified content performance view across all monitoring points

## PROBES

### *Real-time contribution and distribution feed quality monitoring technology*

#### SENTRY

- High-volume content QoE monitoring
- Contribution feed monitoring
- All-in-one monitoring & analysis with comprehensive QoS, QoE, and Perceptual Video Quality measurements



ARGUS

## INSPECTOR & INSPECTOR LIVE

- In-depth content QoE monitoring
- Audio loudness reporting can be fully automated with new API
- External storage on customer's virtual disk
- Historical reporting supports up to 39 days of compliance data storage
- Reduces customer complaints and avoids government fines

## SURVEYOR ABR & SURVEYOR TS

- Adaptive Bitrate streaming QoE and QoS monitoring
- Transport Stream QoE and QoS monitoring
- Monitor VOD workflows to ensure premium quality and seamless delivery from CDNs to subscribers



telestream



# DON'T MISS:

Live in action at [AWS Stand 5.C90](#), Media Supply Pod.  
Experience live workflows demonstrating Vantage,  
Vantage Gateway, and Qualify at the AWS Stand.

