

# Installing and Using Screen MediaMate with Vantage

---

This App Note  
applies to  
Vantage versions  
6.2 and later

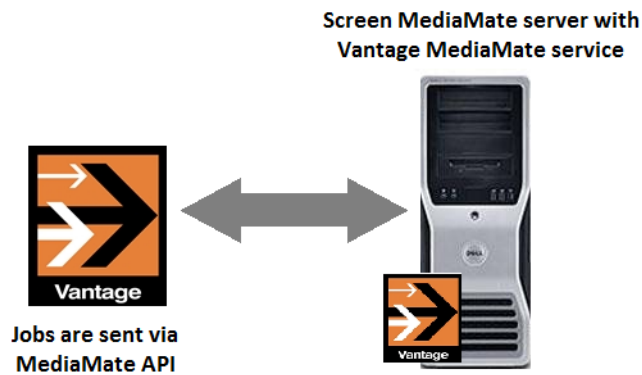
Overview .....	2
Requirements.....	3
Hardware .....	3
Software.....	3
Licensing.....	3
Features.....	3
Limitations.....	3
Installation.....	4
Example Screen MediaMate Workflow .....	5
Configuring Workflow Actions .....	7
More Information about Screen MediaMate .....	10
Sales and Support Contacts .....	10
Telestream Support Contacts.....	10
Copyright and Trademark Notice .....	11

# Overview

The Vantage Screen MediaMate Connector offers a direct I/O connection from Vantage workflows to Screen MediaMate subtitling and captioning software. Through this connector, you can use Screen's MediaMate software to perform tasks under control of a Vantage workflow.

Telestream no longer directly licenses MediaMate through Vantage. Instead, the Vantage MediaMate connector communicates to a MediaMate server which is licensed separately with a Screen license dongle. The Vantage MediaMate connector offers greater flexibility to deploy on a full-featured Screen MediaMate instance through Vantage workflows for automated processing and delivery of media and associated files.

**Figure 1.** Vantage and Screen MediaMate Simplified Diagram



This document describes how to install the Vantage Media Connector and configure Vantage to communicate with Screen MediaMate software.

# Requirements

The Vantage Screen Connector is available for Vantage 6.2 and later. The installation must meet these requirements:

## Hardware

- Vantage-compatible server hardware is required for the Vantage MediaMate service and connector installation running Windows Server 2008 R2 or Windows Server 2012 R1/R2.

## Software

- Vantage and MediaMate software are purchased separately from Telestream and Screen, respectively.
- Vantage 6.2 (or later) and Transcoder 2014.13 (or later) with a current valid license that includes the Vantage Screen Connector (V-SCR-CONN) is required and is obtained from Telestream.
- MediaMate software v3+ with Vantage-compatible MediaMate FLX/VLX model files. Both can be obtained directly from Screen.

## Licensing

- Vantage and the Screen MediaMate software require separate licensing.
- A Vantage 6.2 or later license with MediaMate connector option (V-SCR-CONN) is required. See your Telestream representative.
- A Screen MediaMate license dongle is required. See your Screen representative.

## Features

- The Vantage Screen Connector (V-SCR-CONN) is installed and activated when Screen installs and activates your MediaMate software.
- The user interface for MediaMate selections and options is built into the Vantage MediaMate action inspector. These options allow you to fill in the blanks and make choices to control the MediaMate software via the Vantage connector.
- Vantage and Screen MediaMate are supported separately. Telestream is responsible for the support and maintenance of Vantage and the Vantage MediaMate service and connector. Screen is responsible for supporting the MediaMate software and all MediaMate model processes and functionality.

## Limitations

- Each Vantage V-SCR-CONN license allows for up to four (4) concurrent connections to Screen MediaMate software installations.
- Requires Screen MediaMate software v3+ and Vantage-compatible model files.
- This note describes Vantage 6.2 and current Screen MediaMate functionality. Features may differ if you have an earlier or later version of Vantage or MediaMate. These can be obtained directly from Screen.

# Installation

Follow these steps and refer to [Figure 1](#) to create a Vantage system with Screen MediaMate:

1. Create a Vantage domain with all appropriate Vantage services licensed and actively running.  
Configuring Vantage licensing and services is described in the Vantage Domain Management Guide, which is available from the Help menu of the Vantage Management Console.
2. Create a Screen MediaMate server (or servers) according to the instructions from Screen.  
**Note:** Step 2 and 3 are usually done in conjunction with Screen support staff.
3. Install Screen MediaMate software, the appropriate Vantage-compatible MediaMate FLX/VLX Models, Vantage ScreenAgent, License Security software, and configure them to run with Vantage.
4. Insert the Screen MediaMate license dongle into the MediaMate server(s).
5. Use the Vantage installer to install Vantage with only the MediaMate service on each individual MediaMate server. Enable only the MediaMate service. MediaMate should always run on a separate independent server from Vantage with just the Vantage MediaMate service installed on the MediaMate server.  
**Note:** An additional registry customization will need to be performed by Screen or Telestream support.
6. Add the node(s) running the Vantage MediaMate service as members of the Vantage domain (see the *Vantage Domain Management Guide* for details). License each Vantage MediaMate server for the MediaMate service (V-SCR-CONN).
7. On the Vantage server, share the Vantage default store and the location of files passed to a MediaMate action to allow all servers in the domain (i.e. MediaMate server) access to them. Connectivity to the shared locations within the Vantage domain can be 1Gb Ethernet, 10 Gb Ethernet, Fibre or any other appropriate protocol. Connectivity to shared media files can become a bottleneck if throughput is limited, so design your Vantage/MediaMate system with maximum shared access in mind.

For Vantage installation and licensing details, see the *Vantage Domain Management Guide*.

# Example Screen MediaMate Workflow

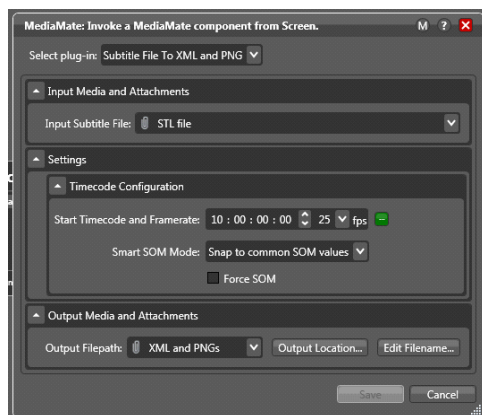
The following is a workflow example () for Open Subtitles using the Screen MediaMate action. It watches for incoming media files, associates a subtitle file, processes the subtitle file producing an XML file and PNG images to be used in the Flip action, then using the XML overlays PNG images on the output video.

**Figure 2.** Example Screen MediaMate Workflow.



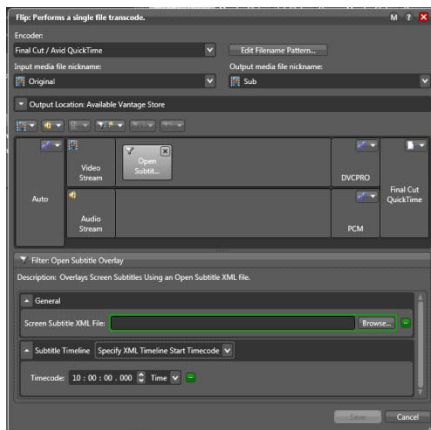
Follow these steps to create this workflow:

1. Add a Watch action to monitor incoming media files and identify them for processing.
2. Next add an Associate action to identify an associated STL subtitle file to be used with the media file.
3. Add a MediaMate action for processing the STL into XML and PNG images:
  - a. Select Subtitle File to XML and PNG from the MediaMate action's plug-in drop down menu.
  - b. Set the Input Subtitle File selection to the subtitle file passed by the Associate action.
  - c. From Settings select the appropriate Timecode Configuration.
  - d. Select the nickname of the Output File Path and the location where the XML and PNG files will be written.



4. Add an Identify action to extract the file path of the XML and PNG files by using *File Properties* Identifier and associate it with a variable.
5. Add a Flip Action to create the media file with burned-in Open Subtitles using one of the available 16bit VPL selections and the *Open Subtitle Overlay* filter.

**Note:** The *Open Subtitle Overlay* filter is only available when using Vantage's Multi-core or Lightspeed 16-bit VPLs.



The result of this workflow is an output video file with Open Subtitles.

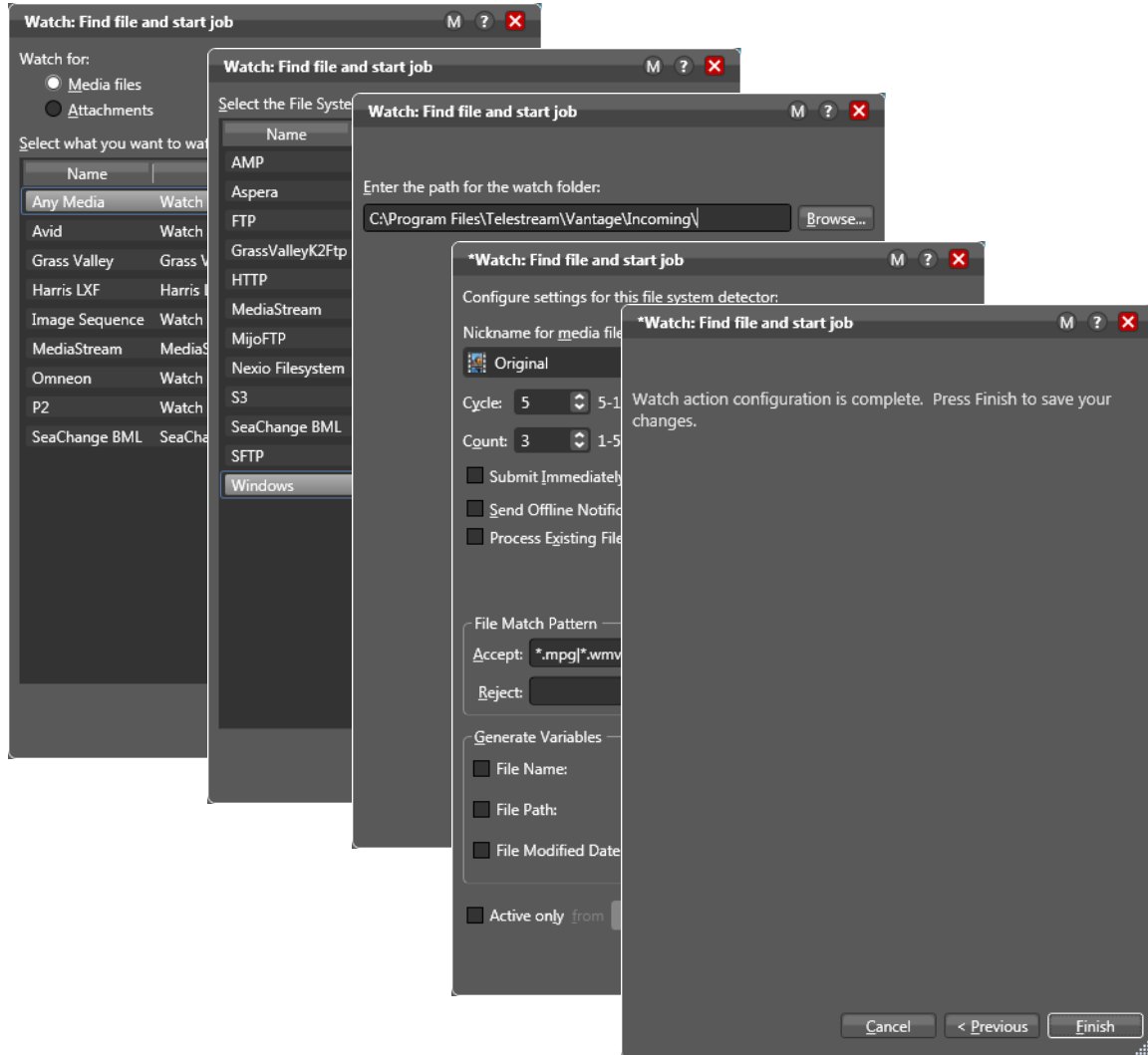


# Configuring Workflow Actions

The meaning of MediaMate action selections are determined by Screen and documented in their software documentation. The following information generally describes the selections. For details, refer to the Screen MediaMate documentation.

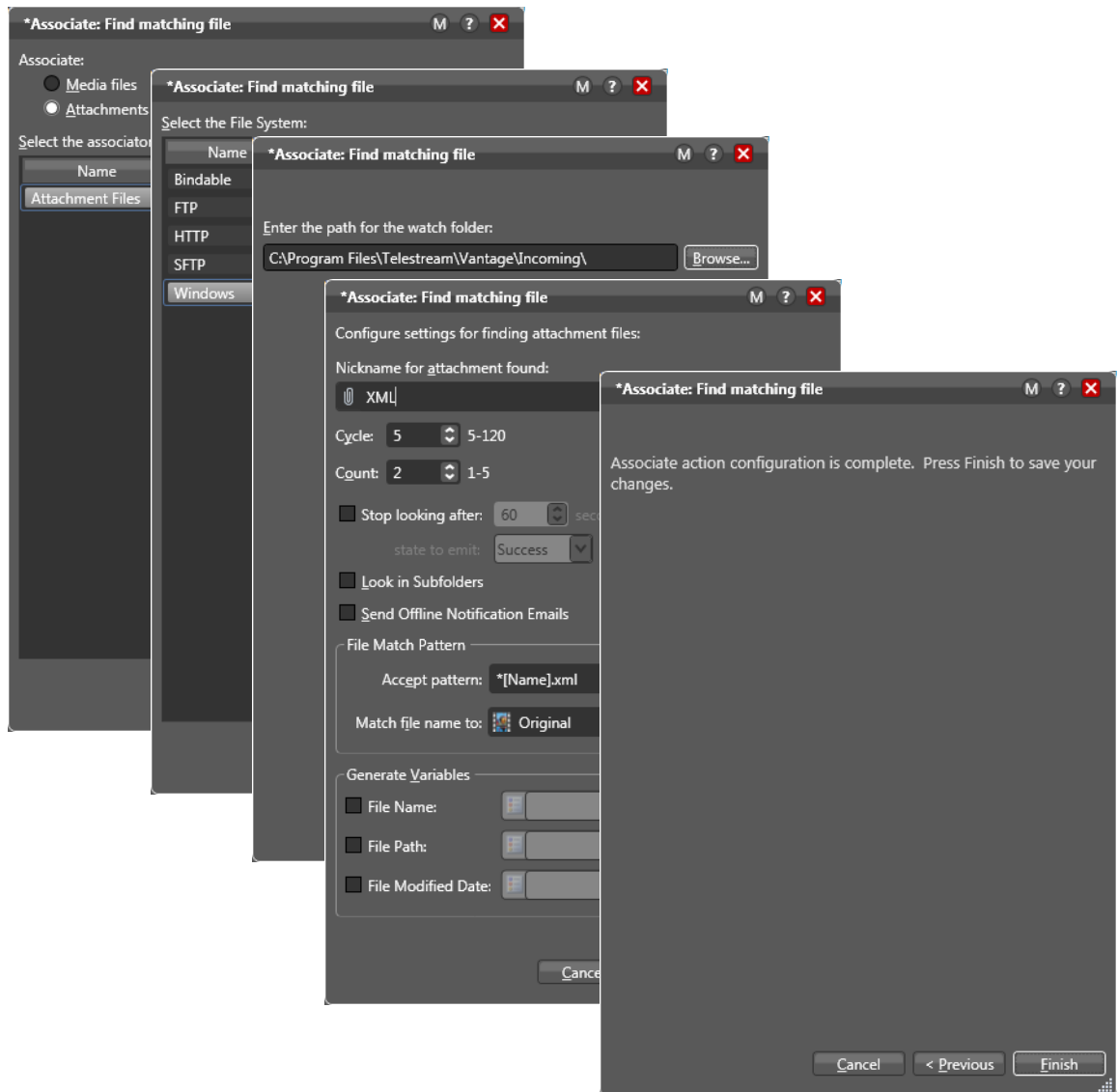
1. Open and configure the Watch action inspector ([Figure 3](#)) to identify the incoming media file type to look for.

**Figure 3.** Example Watch Inspector.



2. Open and configure the Associate action inspector ([Figure 4](#)) to identify the incoming subtitle or caption file type associated with the incoming media file type.

**Figure 4.** Example Associate Inspector.





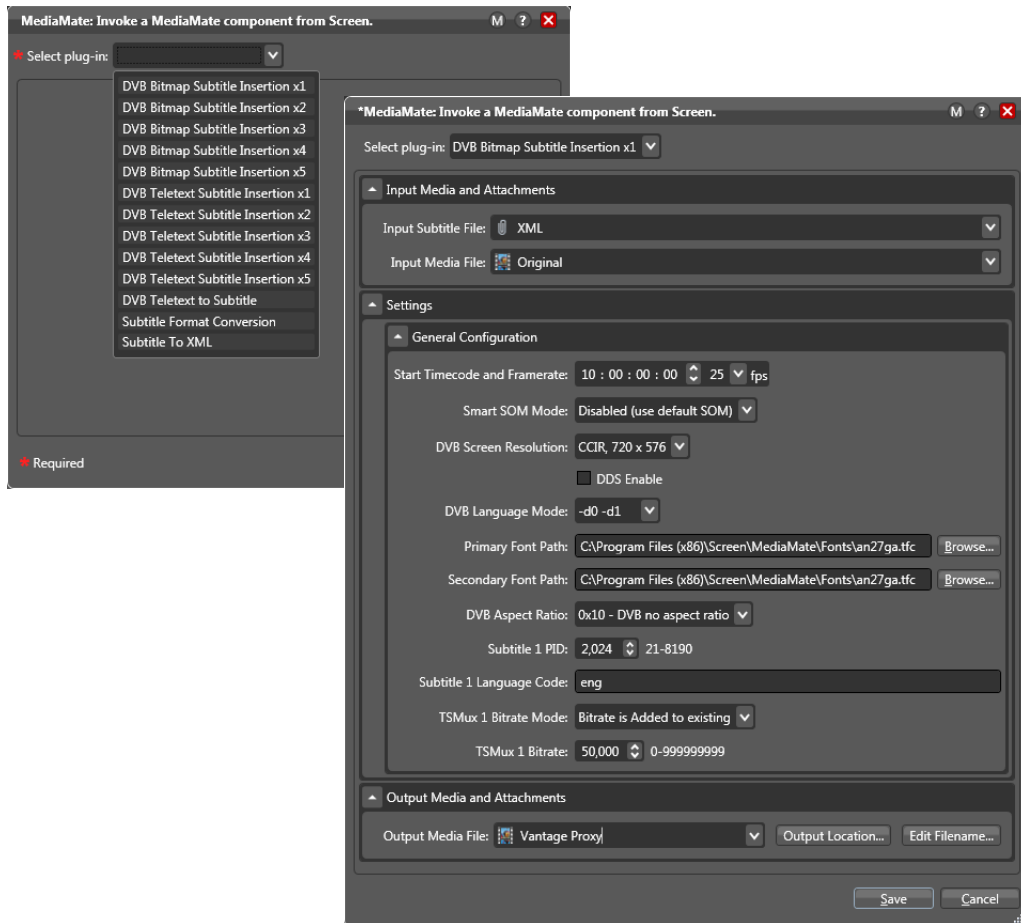
3. Open the MediaMate action inspector, and select a plug-in from the drop-down menu for the function you want to perform (Figure 5).

You can choose insertion of subtitles for multiple languages from bitmap or text, extract teletext to subtitles, or convert a subtitle file to a specified output or to XML.

4. Fill in and make selections in the Input (source files), Settings, Advanced Settings, and Output (output files) fields, and click Save to proceed to the next panel.

Note that the Settings and Advanced Settings selections change depending on which plug-in function you selected in the previous step.

**Figure 5.** Example Screen MediaMate Inspector.



5. Click Save to save the configured action and close the inspector.
6. Configure any additional downstream actions, such as Identify, Flip, Deploy, etc. to produce the desired output files in the desired locations.
7. Activate the workflow, and submit test files to verify successful workflow operation.

## More Information about Screen MediaMate

For more information about Vantage and Screen MediaMate, visit the following Telestream web page: <http://www.telestream.net/telestream-support/vantage/support.htm>

## Sales and Support Contacts

MediaMate software can be obtained from Screen or an authorized Screen reseller/dealer.

- **Sales contact:** Web - <http://www.screensystems.tv/contact/>, Email - [sales@screensystems.tv](mailto:sales@screensystems.tv)
- **Support:** Web - <http://www.screensystems.tv/support/>

Vantage Screen Connector Installation, licensing and documentation can be obtained here:

- [http://www.telestream.net/pdfs/app-notes/app\\_Vantage\\_Screen.pdf](http://www.telestream.net/pdfs/app-notes/app_Vantage_Screen.pdf)

## Telestream Support Contacts

- **Web Site:** <http://www.telestream.net/telestream-support/vantage/support.htm>
- **Support Email:** [support@telestream.net](mailto:support@telestream.net)

Terms and times of support services vary, per the terms of your current service contract with Telestream.

# Copyright and Trademark Notice

© 2015 Telestream®, LLC. All rights reserved. No part of this publication may be reproduced, transmitted, transcribed, altered, or translated into any languages without written permission of Telestream, Inc. Information and specifications in this document are subject to change without notice and do not represent a commitment on the part of Telestream.

Telestream, CaptionMaker, Episode, Flip4Mac, FlipFactory, Flip Player, Lightspeed, ScreenFlow, Switch, Vantage, Wirecast, GraphicsFactory, MetaFlip, and Split-and-Stitch are registered trademarks and Pipeline, MacCaption, e-Captioning, and Switch are trademarks of Telestream, LLC. All other trademarks are the property of their respective owners.