

Using Image Sequencing in Episode

This App Note
applies to
Episode versions
6 and later

Overview	2
Configuring Image Sequences.....	2
To drag and drop an image sequence:	2
To create an image sequence Watch on a folder:.....	5
Copyright and Trademark Notice	5

Overview

Episode Pro and Engine include the ability to encode numbered image sequences, such as those produced in compositing or animation, into a movie in virtually any video format available in Episode. This feature has been present in the command line for quite some time, and now it is available in the user interface as well.

These are the accepted image input file formats: DPX, TGA, TIFF, JPEG, and PNG.

Note: *Formats cannot be mixed in the same job.*

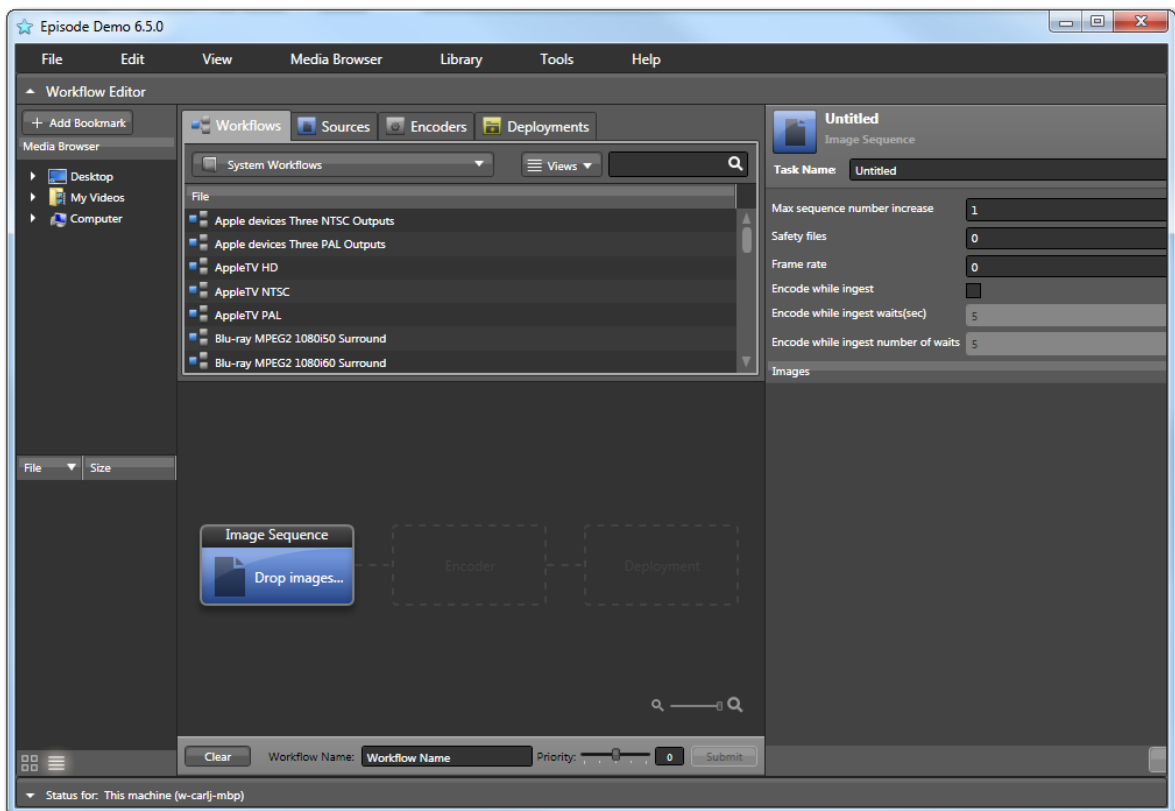
Configuring Image Sequences

There are two methods for creating an image sequence workflow:

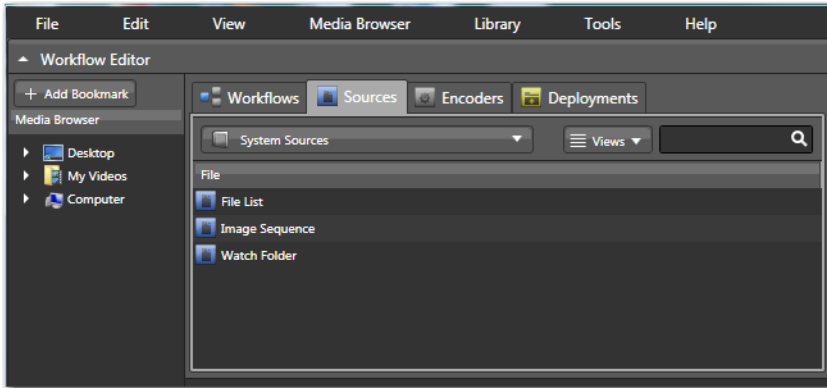
1. Drag and drop a file into an existing sequence on the Source task in a workflow.
2. Set up a Watch Source task on a folder that will receive the sequence input files.

Dragging and Dropping an Image Sequence

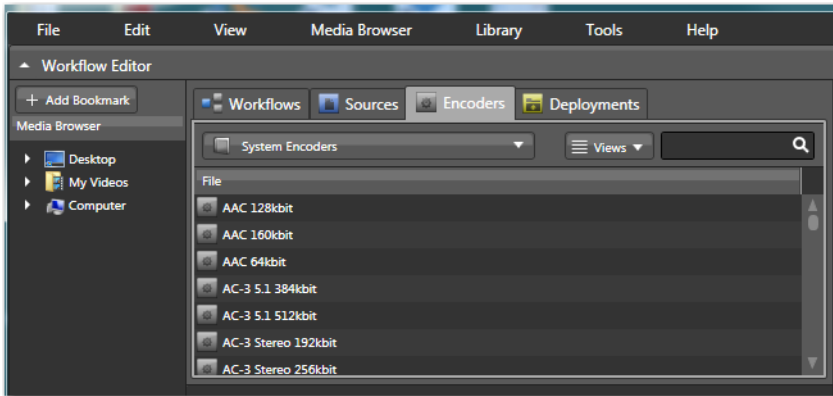
1. Select *File > New > Source > Image Sequence (Windows)*, or drag an Image Sequence source onto the workflow Source task. The Source task changes to Image Sequence and an untitled Image Sequence inspector panel opens.



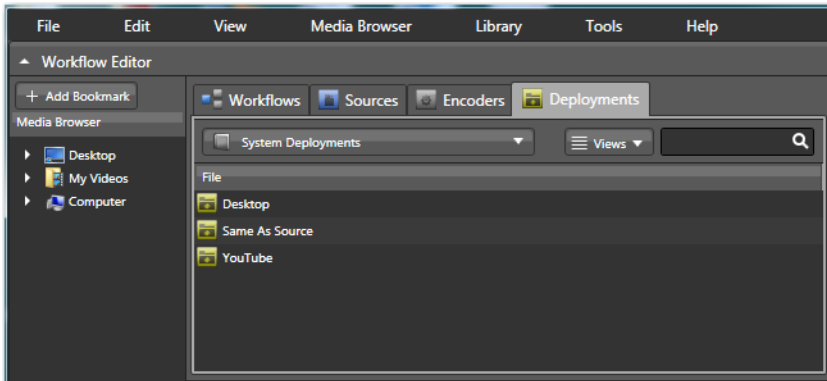
2. Give the image sequence a Task Name and fill in the other inspector fields. (See [Inspector Field Descriptions](#) for details).
3. Drop an image from the sequence onto the workflow Source task.



4. Select and configure a video encoder in the workflow Encoder task.



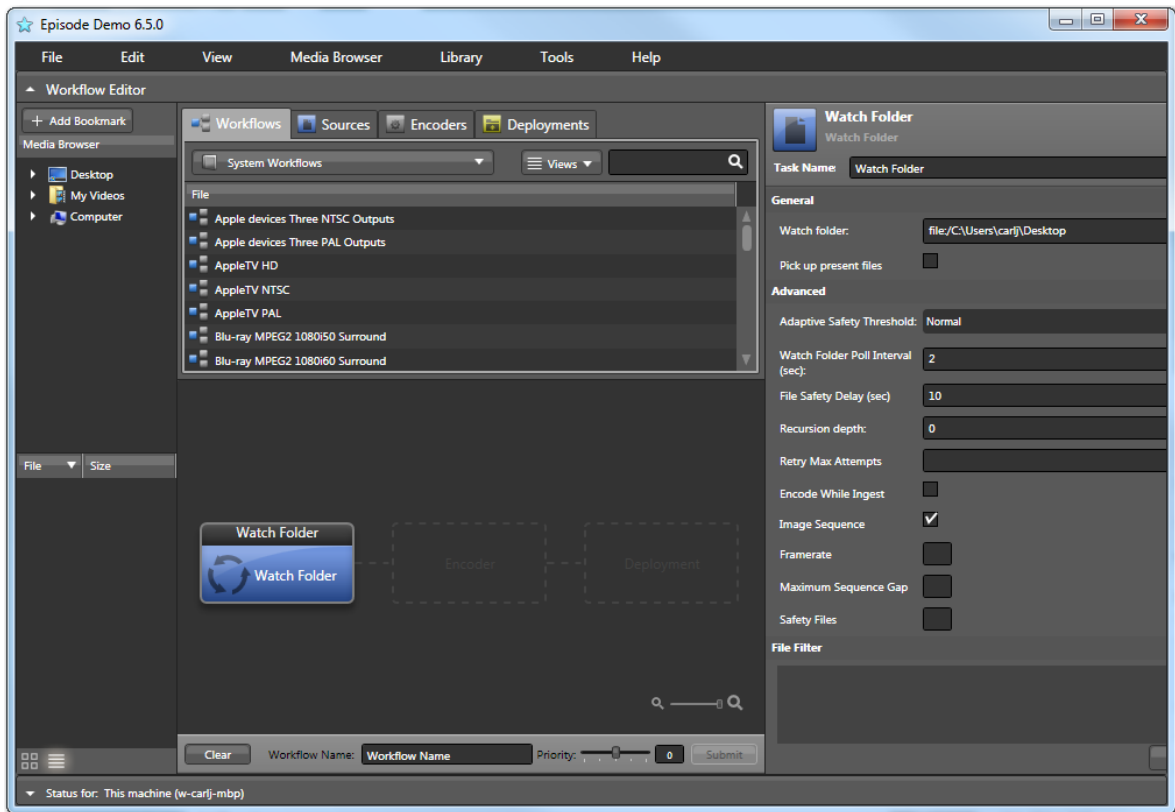
5. Select and configure the workflow Deployment task for the output location.



6. Submit the workflow to start encoding the image sequence. Episode recognizes all the images in the sequence based on the numbering (all must be in the same folder) and processes them in the workflow.

Setting Up a Watch Source

1. Select *File > New > Source > Watch folder* (in Windows), or drag a Watch Folder source onto the workflow Source task.



2. Check the Image Sequence option in the inspector panel, give the Watch Folder a Task Name, select the watch folder, and fill in the other inspector fields. (See [Inspector Field Descriptions](#) for details).
3. Select and configure a video encoder in the workflow Encoder task.
4. Select and configure the workflow Deployment task for the output location.
5. Submit the workflow to start watching the folder for image sequences. When image sequence files are dropped into the source folder, Episode processes them.

Inspector Field Descriptions

Task Name. Names the task.

Max sequence number increase. Enables gaps in the sequence numbers. The default value is 1, meaning that one missing number in a sequence is treated as the end of the sequence. If set to another number, that number of sequence numbers must be missing to be considered the end of a sequence.

Safety files. Controls how many files (subsequent to any particular file) need to be present in the sequence before processing the file. This does not apply to the first file in a sequence. This only has practical implications if *Encode While Ingest* is enabled. A setting of zero may

significantly decrease the time the encoder has to wait when the end of the sequence is reached. However, depending on file system and file format, errors may occur. Default is zero.

Frame rate. Sets the video frame rate of the output media file.

Encode while ingest. Encodes files as they are ingested from a scanner or other device that produces an image sequence over time. Wait times between received files can be specified in the *wait* fields (below).

Encode while ingest waits (sec). Specifies the number of seconds to wait before checking for a newly arrived file during encode while ingest. The default is 5 seconds.

Encode while ingest number of waits. Specifies the maximum number of times to wait for files during encode while ingest. The default is 5 times. If no files are received for 5 wait times, the sequence is ended. Assuming the defaults are used, the maximum is 5 waits times 5 seconds each for a total of 25 seconds.

Images. Lists the images selected for processing by the Image Sequence task.

Revert. Restores the Image Sequence settings to what they were before they were changed.

Save As. Saves the Image Sequence configuration to a file.

Copyright and Trademark Notice

© 2015 Telestream®, LLC. All rights reserved. No part of this publication may be reproduced, transmitted, transcribed, altered, or translated into any languages without written permission of Telestream, Inc. Information and specifications in this document are subject to change without notice and do not represent a commitment on the part of Telestream.

Telestream, CaptionMaker, Episode, Flip4Mac, FlipFactory, Flip Player, Lightspeed, ScreenFlow, Vantage, Wirecast, GraphicsFactory, MetaFlip, MotionResolve, and Split-and-Stitch are registered trademarks and Pipeline, MacCaption, e-Captioning, and Switch are trademarks of Telestream, Inc. All other trademarks are the property of their respective owners.

All other brand, product, and company names are the property of their respective owners and are used only for identification purposes.

