

Using the Episode Adobe Premiere Pro Plug-in

This App Note
applies to
Episode versions
6.0-7.0 and the Adobe
Premiere Pro Plug-in 1.0

Overview	2
Requirements.....	2
Hardware	2
Software.....	2
Licensing.....	2
Example Premiere Workflows.....	3
Exporting and Encoding a Media File	4
Encoding Media Files in a Timeline Sequence	5
Copyright and Trademark Notice	5

Overview

The Episode Premiere Pro Plug-in, version 1.0 for Episode combines two powerful but easy-to-use video processing products to form the perfect, complementary video processing package. Episode offers highly configurable best-in-class video and audio encoding for professionals, and Adobe Premiere Pro provides editing automation, video effects, and internal help so you can convert your video clips into polished, professional quality movies.

The Episode plug-in to Adobe Premiere Pro allows you to select a clip, timeline, or portion of a timeline and submit the selected content to an Episode system or cluster for encoding and deployment.

The plug-in panel provides these operational features in Premiere Pro:

- Select an Episode system or cluster as a destination for submissions
- Import and select Episode encode and deployment tasks
- Browse for a destination folder for encoded output files
- Specify intermediate format quality: YCbCr 4:2:0 8-bit, YCbCr 4:2:2 10-bit, or DV

Requirements

The following requirements describe hardware and software you will need in order to use Episode with Adobe Premiere.

Hardware

- The minimum hardware systems as specified by Adobe are presented here:
<http://www.adobe.com/products/premiere/tech-specs.html>

Software

The following components are required:

- Episode 6 Pro or Engine with API
- Episode Premiere Pro Plug-in, version 1.0
- Adobe Premiere Pro Creative Cloud, version 7.2
- Bonjour Print Services for Windows V2.0.2 or later

Licensing

- Episode and the Episode Premiere Pro Plug-in are available from Telestream.net.
- Adobe Premiere Pro purchase and downloads are available from Adobe.com.
- Bonjour is available as a free download from Apple.com.

Installing the Premiere Plug-in

Follow these steps to install the Episode Adobe Premiere Pro Create Cloud plug-in:

1. Install Adobe Premiere Pro on your computer according to Adobe's instructions.
2. Install Episode on the same or a different computer according to the instruction guide. Episode also requires QuickTime and .NET 3.5 SP1.
3. Install Bonjour Print Services on the Premiere and Episode computers.
4. Install the Episode Premiere Pro Plug-in on the Premiere Pro computer.

Once installation is complete, the plug-in is ready to use with Premiere and should simply be present and functioning when you open Premiere the next time.

Uninstalling the Plug-in

On Windows, if you need to uninstall the plug-in, use Control Panel > Programs and Features, select the Episode Premiere Pro Plug-in, and select Uninstall.

On the Macintosh, you need to run a special uninstaller program:

1. Open a Terminal window.
2. Type the following to access and run the uninstaller program:
 - a. `cd Library/Application Support/Adobe/Episode/`
 - b. `sh uninstall.sh`

The plug-in will be removed, but any epitasks you've created will remain.

Example Premiere Workflows

There are some preliminary steps and two basic workflows for using the Episode plug-in within Premiere:

- [Preliminary Steps](#)
- [Exporting and Encoding a Media File](#)
- [Encoding Media Files in a Timeline Sequence](#)

Preliminary Steps

Before you begin using the Episode Premiere Pro Plug-in, there are some steps to complete:

- Make sure the Episode systems you want to access are available on your local network and are configured for your desired workflow.
- In Episode, create and export Episode epitasks and deployment epitasks configured to deliver the outputs you desire. These epitasks will be used in the following Premiere workflows.

Exporting and Encoding a Media File

The following workflow example demonstrates how to use Episode from within Adobe Premiere:

1. Start Adobe Premiere Pro and create a new project.
2. In the Media Browser, double-click a media clip. The file opens in Source Monitor.
3. Select File > Export > Media. The Export Settings window opens.
4. In the Export Settings window, select the following:
 - Format: Episode Exporter
 - Video tab > Configure Settings button

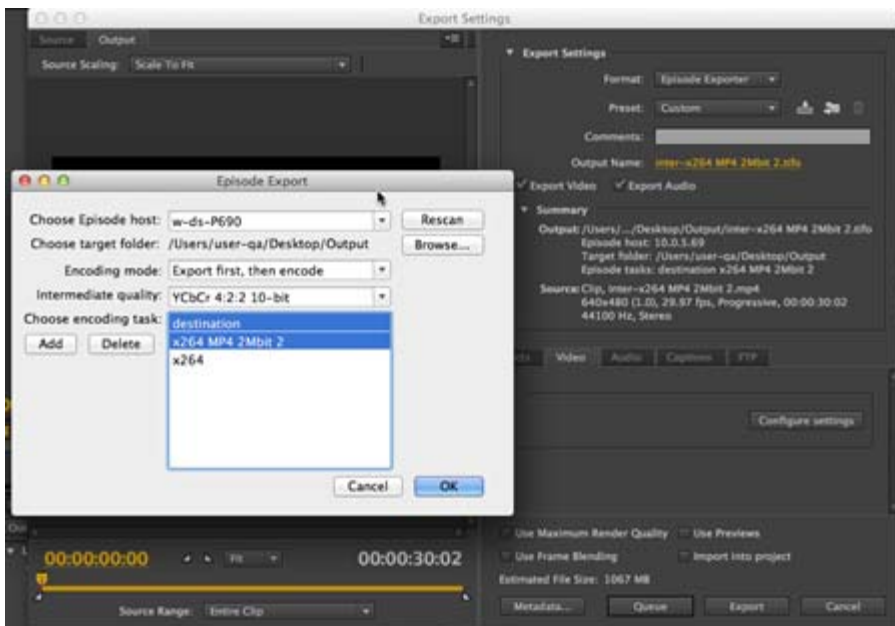
The Episode Export window opens, and Bonjour scans the network for Episode instances that you can select to use for encoding.

5. In the Episode Export window (see figure below), make the following selections:
 - a. Use Choose Episode host to select an Episode system or cluster to perform the encoding.
 - b. Use Choose Target folder to specify a destination for the encoded file.
 - c. Select the Encoding Mode (Use Export First, then encode—for 1.0 this is the only working mode).
 - d. Select Intermediate Quality to choose the video quality.
 - e. Use Choose Encoding Task to select an epitask that you created and saved previously using Episode. You can use the Add button to browse and add more epitasks to the list.

Note: If you select a deployment epitask here, Episode delivers the file twice—once to the target folder and again to the deployment task output.
 - f. Click OK, and then click the Export button in the Export Settings window.

The selected Episode system begins encoding the selected media file. Premiere shows an encoding progress bar, and you can also watch progress and view status information in the Status window on the Episode system.

When encoding is complete, the encoded file appears in the target folder specified by the epitask.



Encoding Media Files in a Timeline Sequence

You can also use Episode and the Episode Premiere Pro Plug-in to encode multiple files on an Adobe Premiere Pro Timeline:

1. Import or drag and drop a media clip onto the timeline to create a sequence.
2. Play the clip in the timeline and edit as desired, including marking in and out points.
3. Repeat steps 3–5 of the previous procedure—[Exporting and Encoding a Media File](#)—to encode the media file used in the sequence.

Encoding progress is displayed in Premiere and can also be viewed in the Episode Status window. Your encoded outputs will be placed in the target folder specified by the epitask.

This concludes the description of Episode with Adobe Premiere. For more information, please visit the Telestream.net and Adobe.com Web sites.

Copyright and Trademark Notice

© 2014 Telestream®, Inc. All rights reserved. No part of this publication may be reproduced, transmitted, transcribed, altered, or translated into any languages without written permission of Telestream, Inc. Information and specifications in this document are subject to change without notice and do not represent a commitment on the part of Telestream.

Telestream, CaptionMaker, Episode, Flip4Mac, FlipFactory, Flip Player, Lightspeed, ScreenFlow, Vantage, Wirecast, GraphicsFactory, MetaFlip, MotionResolve, and Split-and-Stitch are registered trademarks and Pipeline, MacCaption, e-Captioning, and Switch are trademarks of Telestream, Inc. All other trademarks are the property of their respective owners.

All other brand, product, and company names are the property of their respective owners and are used only for identification purposes.