

# Using the Vantage Database Deployment Utility

---

This App Note applies to Vantage 6.3	Overview .....	2
	Software Requirements .....	2
	Licensing.....	2
	Features.....	2
	Limitations.....	2
	Prerequisites for Instance Installation .....	3
	Using the Database Deployment Utility .....	5
	Copyright and Trademark Notice .....	8

# Overview

The Vantage Database Deployment Utility allows you to upgrade or install a Vantage database into an existing SQL 2008, 2012, or 2014 database instance. The utility auto-discovers SQL database instances on your network and allows you to select the one you wish to install the Vantage database into.

Because this utility installs a Vantage domain database into an existing SQL instance, it allows you to use the existing database name and password. This allows you to create Vantage systems using custom instance names other than *VANTAGE*.

## Software Requirements

- The Vantage Database Deployment Utility works with Vantage version 6.3.

## Licensing

- The Vantage Database Deployment Utility is available for use with any Vantage license level.

## Features

- Installs a Vantage database into an existing Microsoft SQL instance. This allows custom database instance names and passwords. Customers who need to distinguish among multiple domain databases by different instance names and passwords can do so.
- Upgrades existing Vantage database instances, making upgrades of standard, mirrored, and clustered databases much faster and easier.
- Re-installs a clean version of a Vantage database into an existing database.

## Limitations

- If you plan to use Windows authentication when deploying a database using the Database Deployment Utility, you must also set the SQL Server service Log On to the same Windows account that you will use for database authentication. To change the SQL Server service log on, select Start > Administrative Tools > Services > SQL Server > Properties > Log On > This account.
- These instructions do not cover the installation of SQL or the creation of the instance. Please refer to SQL documentation and contact Telestream for assistance if your Vantage installation includes a mirrored or clustered database configuration.

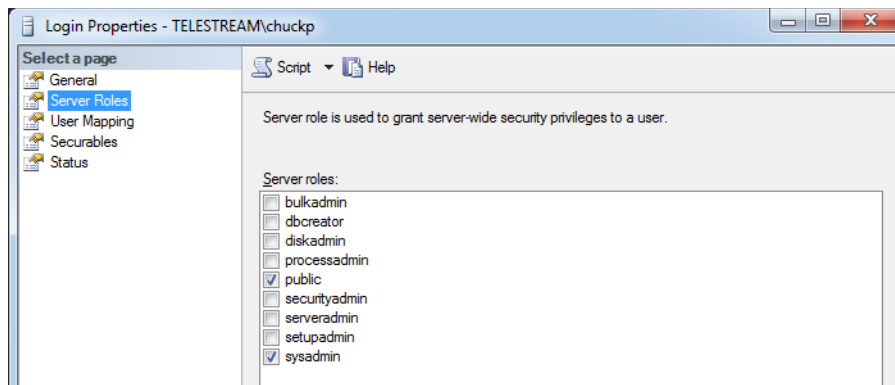
## Prerequisites for Instance Installation

It is assumed you have already created a SQL database instance into which a Vantage database instance can be deployed. The database instance must meet certain prerequisites before you can use the Vantage utility to deploy a Vantage database instance:

- The SQL instance must be deployed as a named instance.
- The SQL instance must include a SQL or active directory user account. The user can be sa or another account, and any password may be used.
- The user account installing the Vantage database must have the *sysadmin* role assigned. The steps below explain how to assign a role.
- The user account running the Vantage database after it is installed can have the *db\_owner* and *dbcreator* roles assigned instead of *sysadmin*, if you prefer the user to have lower privileges.

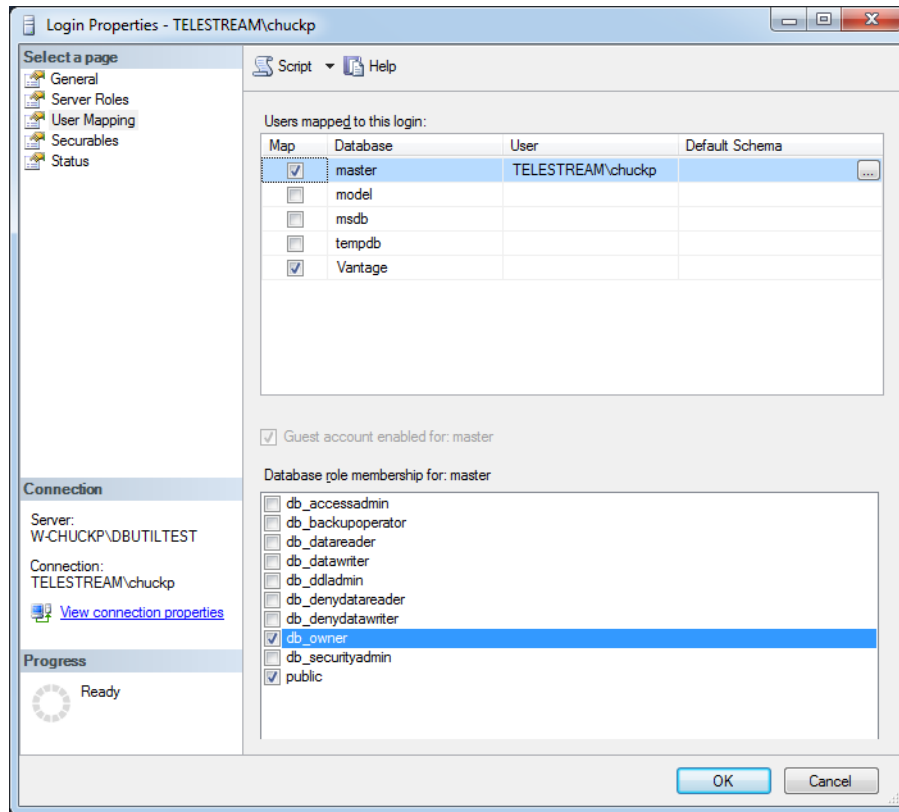
## Configuring the Administrator Role

1. In the SQL Server Management Studio > Object Explorer panel, expand Security, and expand Logins.
2. Right-click the *sa* user or another user that you want to use as the administrator login, and select *Properties*.
3. Go to Server Roles and enable *sysadmin*. Click *OK*. This gives the user system administrator privileges for the database instance.

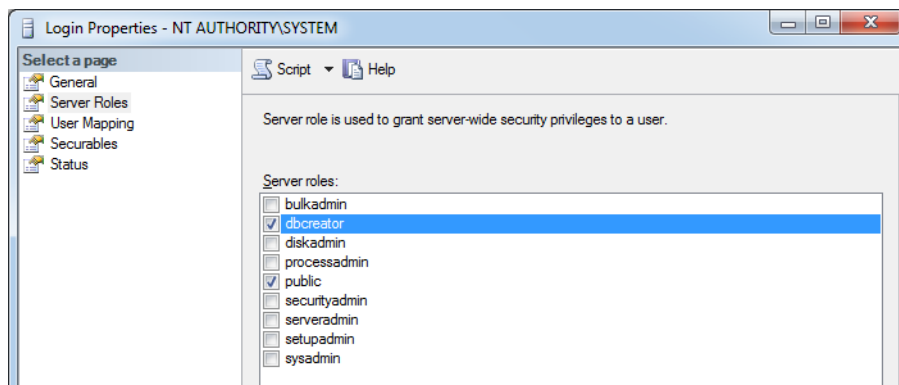


## Configuring the Vantage User Role

1. Right-click the current Windows user and select *Properties*.
2. Click *User Mapping*. Check *master* or Vantage (if present) in the database column, and check *db\_owner*. Click *OK*.



3. Right-click the Windows user and select *Properties* again.
4. Click *Server Roles* and check *dbcreator* to enable it. Click *OK*. This gives the current Windows user sufficient privileges to run the Vantage database instance after installation.

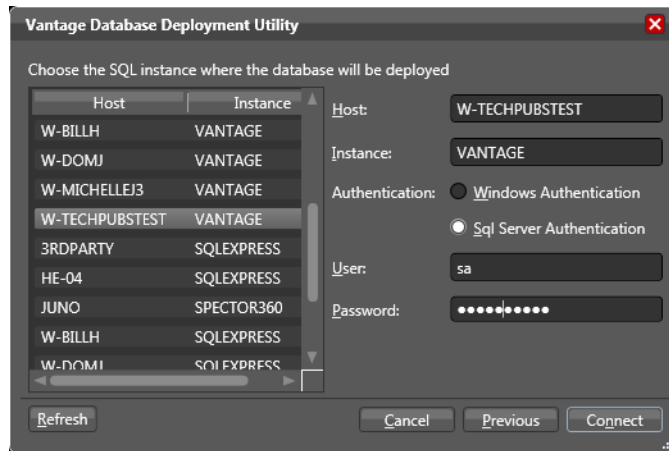


5. From the Select a page panel, go to *Memory* and set *Maximum server memory (in MB)* to 75% of the host system's memory. For example, if the system's memory is 8 GB (8192 MB), then the maximum server memory for SQL should be set to 6 GB (6144 MB) ( $8192 \times 0.75 = 6144$ ).
6. Click *OK* to close the Microsoft SQL Server Management Studio window.

# Using the Database Deployment Utility

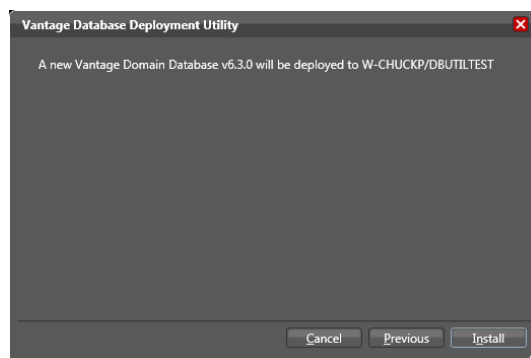
Follow these steps to use the Database Deployment Utility to install Vantage into an existing database instance, to upgrade an existing Vantage database to the current version, or to replace an existing Vantage database with a clean, new Vantage database:

1. Launch the *DatabaseDeploymentUtility.exe* file.
2. Check the *I accept the license agreement* checkbox, and click Next.
3. Select a Host and Instance in the left panel.

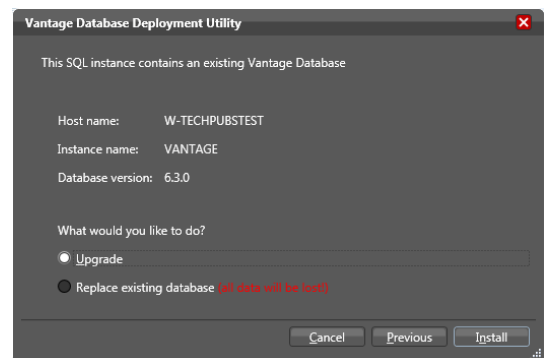


4. In the right panel, choose an Authentication method, either Windows or SQL Server.  
No matter which authentication method you choose, the user must have the *sysadmin* role assigned to install a Vantage database instance.  
**IMPORTANT:** If you use Windows authentication, you must also set the SQL Server service Log On to the same Windows account that you will use for database authentication. Otherwise, you will receive a logon error message.  
To change the SQL Server service Log On, select Start > Administrative Tools > Services > SQL Server > Properties > Log On > This account.
5. Enter the authentication *User* name and *Password*, if required.
6. Click Connect to connect to the database instance. A dialog opens listing the DB instance and asking what you would like to do.

Non-Vantage Database Instance



Vantage Database Instance



7. Select the type of deployment you want to do:

- a. If you are installing the Vantage domain database into an existing non-Vantage database instance, there is nothing to select. Just verify that the instance you connected to is listed in the window. Then go on to the next step.

**Warning:** The existing contents of the database instance will be erased and replaced with the new Vantage instance.

- b. If you are upgrading or replacing an existing Vantage database, verify that the instance you connected to is listed in the window, and then select what you want to do:

*Upgrade*—Select this if you want to retain the domain database contents but upgrade it to the current Vantage database version.

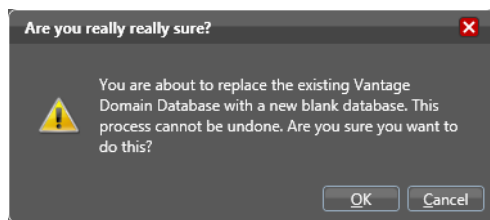
**Note:** You cannot downgrade a database; upgrading will only move a database from previous versions to the current version.

*Replace existing database*—Select this if you want to completely erase the database contents and install a new, clean Vantage database.

**Warning:** If you select Replace, all database contents WILL BE ERASED and replaced. Back up your database first using the Vantage Management Console if you want to keep the contents. Backing up before upgrading is also advisable as a precaution but not required.

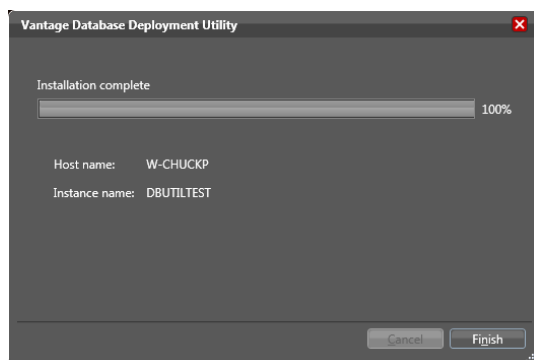
8. Click Install.

9. If you selected *Replace existing database*, a warning message pops up to advise you that your database will be completely erased and replaced if you continue.



10. Click OK to install the upgraded or new database.

11. A window opens to show progress and advises you when the installation is complete.



12. Click Finish when the progress window indicates *Installation/Upgrade Complete*.

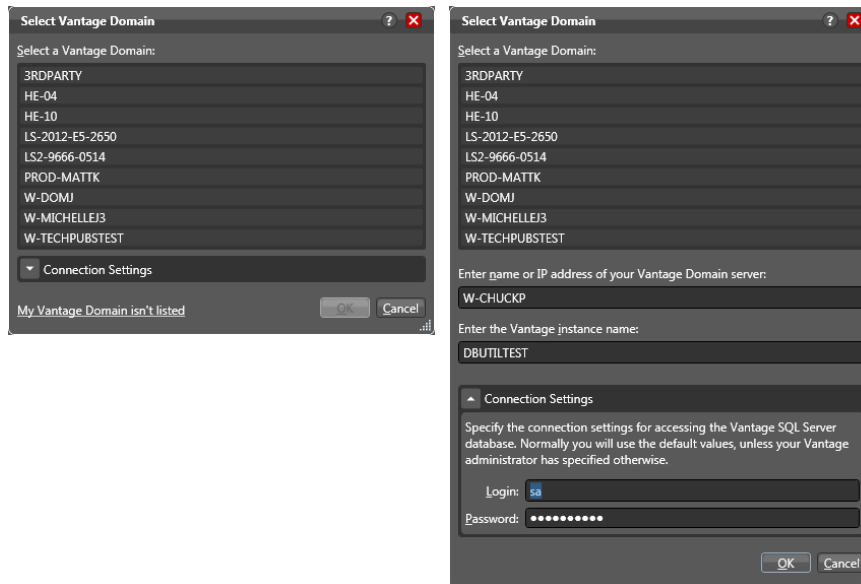
The database has now been converted/upgraded to a current Vantage database. If you chose Upgrade, the Vantage domain database contents remain intact, but the database structure is upgraded. If you chose Replace, a clean Vantage domain database is installed.

**13.** You are now ready to install or upgrade Vantage:

- a. New Vantage Installations:** If you are installing a new Vantage instance, run the Vantage\_Setup.exe installer, select *Array {Multi-Node} Installation*, select *Custom*, select the components you want, but do NOT select *Database*. This ensures Vantage installs, but the database is not touched.
- b. Upgrading Vantage:** If you are upgrading an existing Vantage instance, use the Control Panel Programs and Features to remove only Vantage but leave MS SQL and the domain database in place. Then run the Vantage\_Setup.exe installer, select *Array {Multi-Node} Installation*, select *Custom*, select the components you want, but do NOT select *Database*. This ensures Vantage installs, but the upgraded database is not touched.

**14.** If necessary, use the Vantage Management Console > File > Change Vantage Domain (shown below) to connect your new or upgraded Vantage installation to the deployed database.

If you installed a Vantage database with a custom name and password, you may need to select *My Vantage Domain isn't listed*. Then enter the server name, the custom database name, expand the *Connection* settings, and enter the custom Login and Password. When you click OK, the Vantage Management Console should connect to the database and begin normal operation.



**REMINDER:** If you use Windows authentication, you must also set the SQL Server service Log On to the same Windows account that you will use for database authentication. To change the SQL Server service Log On, select Start > Administrative Tools > Services > SQL Server > Properties > Log On > This account.

**15.** If necessary (for a new installation), install Vantage licenses using the Vantage Management Console > Licenses panel and configure Vantage as described in the Vantage Domain Management Guide.

# Copyright and Trademark Notice

Copyright © 2015 Telestream, LLC. All rights reserved. No part of this publication may be reproduced, transmitted, transcribed, altered, or translated into any languages without written permission of Telestream. Information and specifications in this document are subject to change without notice and do not represent a commitment on the part of Telestream.

Telestream, CaptionMaker, Episode, Flip4Mac, FlipFactory, Flip Player, Lightspeed, ScreenFlow, Vantage, Wirecast, GraphicsFactory, MetaFlip, and Split-and-Stitch are registered trademarks and Pipeline, MacCaption, e-Captioning, and Switch are trademarks of Telestream, LLC. All other trademarks are the property of their respective owners.