



Installing and Using Signiant with Vantage



Synopsis	2
Vantage Signiant Action I/O	2
Requirements.....	3
Hardware	3
Software	3
Licensing.....	3
Limitations	3
Signiant Integration with Vantage	4
Signiant Server Selection in Management Console.....	4
Configuring Signiant Actions	6
Example Signiant Workflow	8
Copyright and Trademark Notice.....	9

Note: This guide is written for video professionals who are familiar with using Vantage. To implement applications in Vantage, you should know how to create workflows and submit jobs. If you aren't familiar with Vantage, we suggest that you review the *Vantage User's Guide* and *Vantage Domain Management Guide* as needed.



Synopsis

Vantage 6.0 and later integrates the Signiant file transfer technology directly into a Vantage service and workflow action, enabling automated high-speed transfer of files, including media and metadata files, processed through any Vantage workflow. Vantage connects directly with Signiant servers via an optional Vantage Signiant connector and the associated Vantage Signiant workflow action. Using the Vantage Signiant action within your Vantage workflow enables the automated delivery of media and associated files directly to Signiant servers.

Vantage Signiant Action I/O

These are the Vantage Signiant workflow action inputs/outputs:

Inputs

- Select a server pre-defined in Vantage Management Console Settings and Options
- Select media files and associated attachment nicknames available in the Signiant Vantage action.

Outputs

- The Vantage Signiant workflow action delivers the selected media file and attachments to the selected Signiant server.

Requirements

The Vantage Signiant connector service is available in Vantage 6.0 through 7.0 or later. If you do not currently have Vantage 6.0 or later, download it from www.telestream.net and obtain a license, which includes the Vantage Signiant connection service, from Telestream.

Hardware

- Vantage compatible server hardware

Software

- Vantage 6.0 through 7.0 or later, with a valid license that includes the Vantage Signiant connector service.
- Signiant server requirements for Vantage Signiant connector:
 - Use of the Vantage Signiant Connector requires that the customer have or acquire a Signiant CTE product with the proper capacity.
 - Customers should refer to their Signiant representative for specific information on their configuration.

Signiant Contact Information:

Sales contact: Web - www.signiant.com/company/contact ; Email - sales@signiant.com

Support: EMAIL - support@signiant.com

Telephone contacts:

US: +1 781-221-4000

Canada: +1 613-599-2140

Germany: +49 151 16747769

UK: +44 161 285 3299

Asia Pacific: +65 9656 0562

Licensing

- Vantage 6.0 to 7.0 or later license that includes the Vantage Signiant connector service
- The receiving Signiant server must be licensed to accept Signiant transfers. Contact your Signiant representative for licensing details.

Limitations

- Each Vantage license instance allows for up to four (4) concurrent file transfer sessions.
- Signiant servers may enforce a limit on concurrent file transfers that is different from that allowed by the Vantage connector service based on specific customer licensing.

Signiant Integration with Vantage

Signiant integration is available in Vantage 6.0 through 7.0 or later. Follow these steps to enable Signiant technology on your Vantage system:

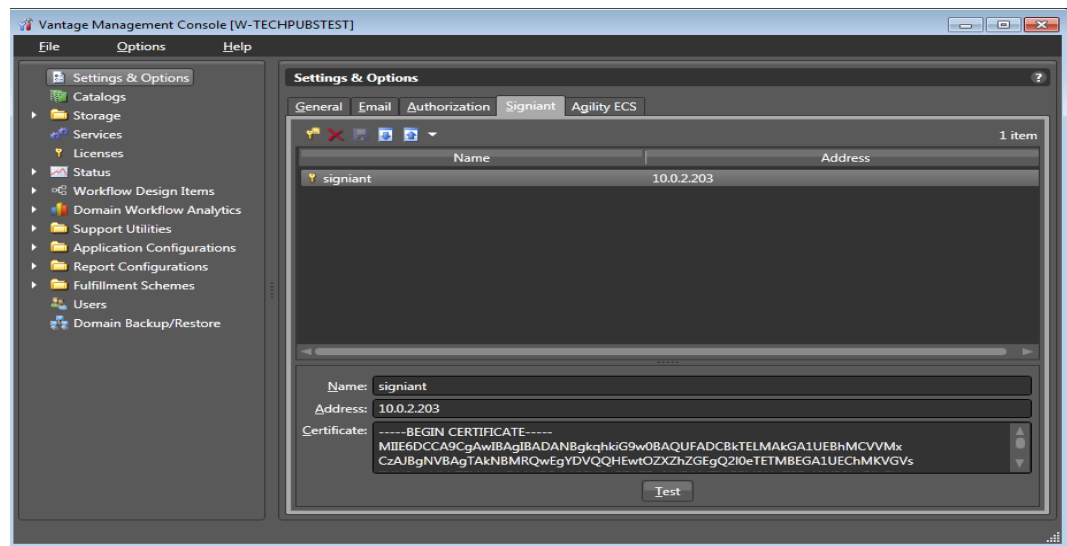
1. If you do not currently have Vantage 6.0 through 7.0 or later, download it from www.telestream.net and obtain a license from Telestream that includes the Signiant service.
2. If you already have Vantage 6.0 or later, obtain a license from Telestream that includes the Signiant service.
3. Install Vantage. When you run the Vantage 6.0 Setup.exe installer, select Custom Install and verify that Signiant is checked before installing. During Vantage setup, apply a Vantage license that includes the Signiant service. For details, see the [Vantage Domain Management Guide](#).


Signiant Server Selection in Management Console

Before you can access the Signiant server from Vantage, you must select the server you want to address and set up an account address and certificate to allow login.

1. Log into the Vantage Management Console.
2. In the Settings & Options details panel, select the Signiant tab.
3. Vantage displays the Signiant agent configuration panel ([Figure 1](#)).

Figure 1. Signiant Connection Tab



4. Click the Add New Setting button  in the toolbar (or right-click in the empty space below the button and select Add new setting).
5. In the Agent name field, enter a “friendly name” for the Signiant server (for example, *New York Signiant Server*), and in the address field, enter the IP address or a fully qualified DNS name.

6. In the Certificate field, paste the CA Certificate text copied from the Signiant server. To obtain a CA Certificate, see the following [Signiant CA Certificate Instructions](#).
7. Click the Save button to save the new Signiant server entry.
8. To test the Vantage-Signiant connection, click the Test button at the bottom of the window.

You can create additional Signiant server entries as needed.

Signiant CA Certificate Instructions

To get a CA Certificate to enable a Vantage-Signiant connection, follow these steps:

1. Use a Web browser to log into the Signiant server with valid credentials (e.g. signiant.sierrapost.com).
2. Navigate to Developer > CTE Test Configurations and click Add Configuration.
3. Enter a configuration name and configure settings for your system.
4. In the CA Certificate field (under Advanced Transfer Settings), select the certificate text and copy it (including the -----BEGIN CERTIFICATE----- and -----END CERTIFICATE----- lines).
5. Paste the certificate text into the Vantage VMC > Settings and Options > Signiant > Certificate field as explained in the previous procedure ([Configuring a Signiant Connection](#)).

Alternative method:

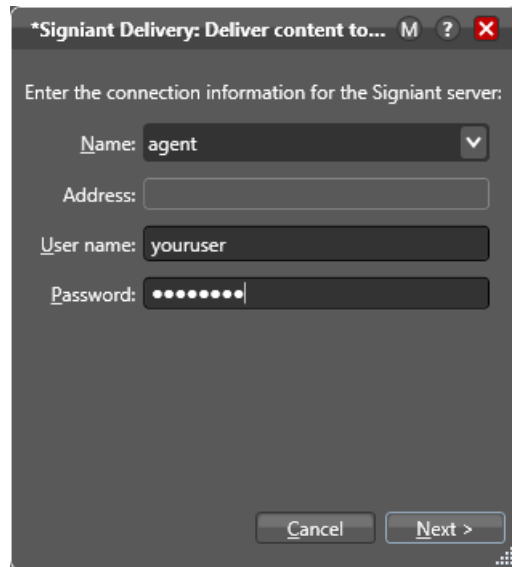
1. Log into the Signiant Manager host as an administrator.
2. In a terminal window, navigate to the Signiant bin directory.
3. Enter the command `dds_cert extract` to extract a certificate from the credentials store.
4. Open the text file named `ddsCA_Cert.pem` and copy the entire text (including the -----BEGIN CERTIFICATE----- and -----END CERTIFICATE----- lines).
5. Paste the certificate text into the Vantage VMC > Settings and Options > Signiant > Certificate field as explained in the previous procedure ([Configuring a Signiant Connection](#)).

Configuring Signiant Actions

Follow these steps to configure the Signiant Delivery action:

1. Create a workflow.
2. Click and drag the Signiant action into the workflow, typically as the last step in the flow.
3. Click the "i" in the upper left corner of the Signiant Delivery action to open the Inspector. The following inspector panel appears ([Figure 2](#)).

Figure 2. Example Signiant Inspector (panel 1).



*Signiant Delivery: Deliver content to... M ? X

Enter the connection information for the Signiant server:

Name: agent ▼

Address:

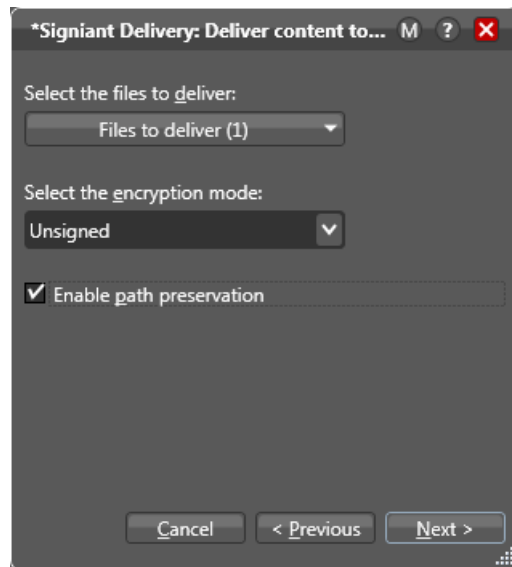
User name: youruser

Password:

Cancel Next >

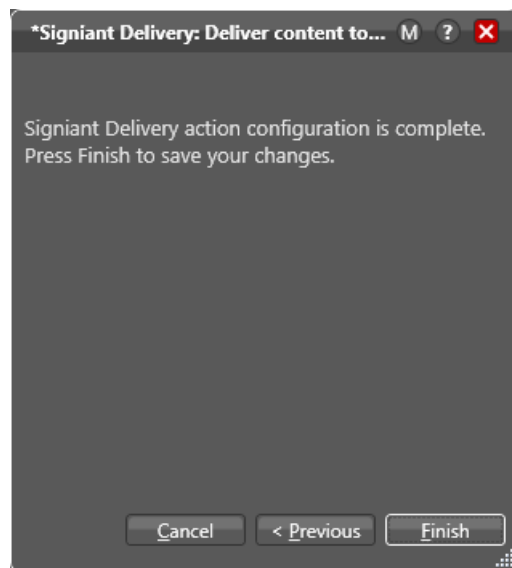
4. From the Name drop-down list, select the Name of the Signiant server entry you created in the Vantage Management Console. When you do so, the Address should appear automatically and will be grayed out.
5. Enter a valid account User name and Password, and click *Next* to see the panel in [Figure 3](#).

Figure 1. Signiant Delivery Inspector (panel 2)



6. In the next inspector panel, click the drop-down menu and select the file you want to deliver.
7. Select the encryption mode from the second drop-down menu. Choices are None, Unsigned, and Strong.
8. If you would like to preserve the path to the file, click the check box.
9. Click Next to advance to the next screen, which should indicate that configuration is complete ([Figure 4](#)).

Figure 2. Signiant Delivery Inspector (panel 3)



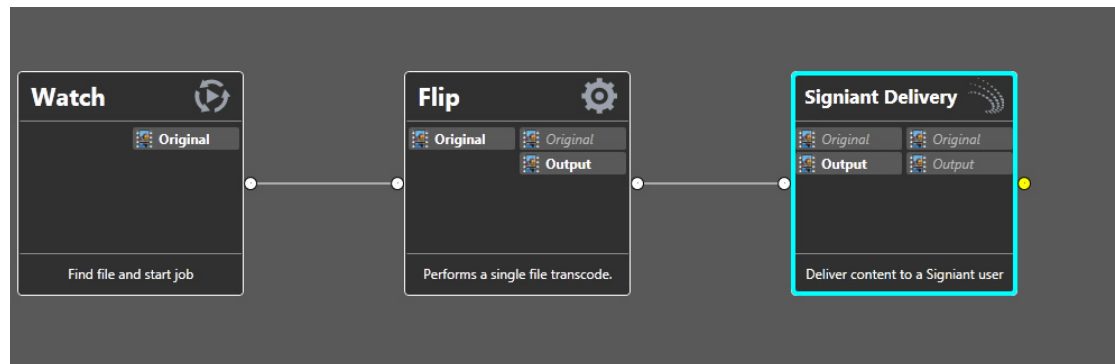
10. Click Finish to close the inspector.

Now when the workflow executes, Vantage Signiant service will connect to the Signiant server using the server address and account credentials you provided and delivers the files you specified.

Example Signiant Workflow

The following example ([Figure 5](#)) shows a typical Vantage workflow ending with a Signiant action to send files to the Signiant server.

Figure 3. Example Signiant Workflow.



Copyright and Trademark Notice

©2016 Telestream®, Inc. All rights reserved. No part of this publication may be reproduced, transmitted, transcribed, altered, or translated into any languages without written permission of Telestream, Inc. Information and specifications in this document are subject to change without notice and do not represent a commitment on the part of Telestream.

Telestream, CaptionMaker, Episode, Flip4Mac, FlipFactory, Flip Player, Lightspeed, ScreenFlow, Switch, Vantage, Wirecast, Gameshow, GraphicsFactory, MetaFlip, and Split-and-Stitch are registered trademarks and MacCaption, e-Captioning, Pipeline, Post Producer, Tempo, TrafficManager, and VOD Producer are trademarks of Telestream, LLC. All other trademarks are the property of their respective owners.

