

Episode/Episode Engine



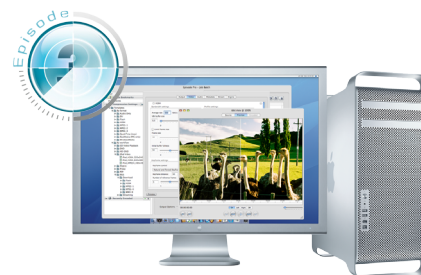
Hardware Setup Examples

This document provides hardware setup recommendations for the Episode® family ranging from smaller Episode desktop solutions to larger server-based Episode Engine workflows.

Episode and Episode Pro

Mac Pro 4 cores

Processor:	Two 2.66 GHz Dual-Core Intel Xeon (or faster)
Memory:	2 GB DDR2 (or more)
Hard drive:	250 GB (or more)
Graphics:	Standard, recommended by Apple
Display:	Customer Choice



Episode setup with Mac Pro

Episode Engine - Single Deployment

Alternative A

Episode Client - Mac Mini (alt. 1)

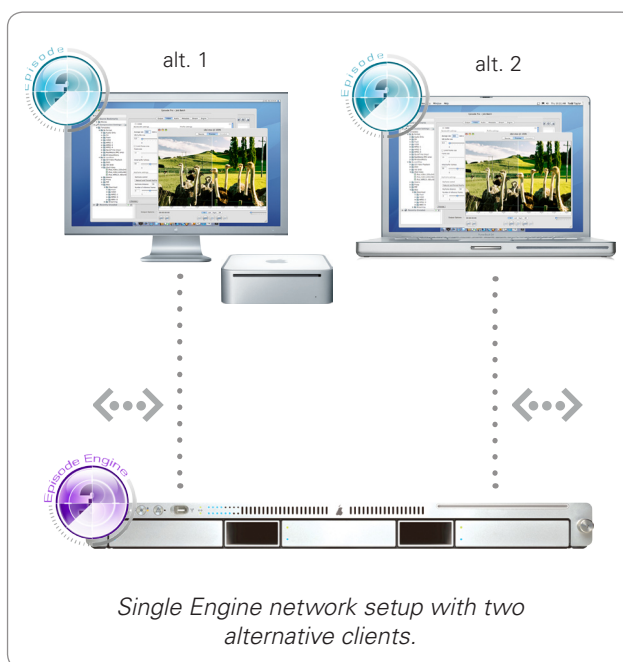
Processor:	1.83 GHz Intel Core 2 Duo
Memory:	1 GB DDR2
Hard drive:	80 GB (or more)
Graphics:	Standard, recommended by Apple
Display:	Customer Choice

Episode Client - MacBook Pro (alt.2)

Processor:	2.2 GHz Intel Core 2 Duo
Memory:	2 GB DDR2 (or more)
Hard drive:	120 GB

Episode Engine - Xserve

Processor:	Two 2.66 GHz Dual-Core Intel Xeon (or faster)
Memory:	4 GB DDR2 (or more)
Hard drive B1*:	750 GB Serial ATA ADM@7200 -rpm
Hard drive B2*:	750 GB Serial ATA ADM@7200 -rpm (optional)
Hard drive B3*:	750 GB Serial ATA ADM@7200 -rpm (optional)
Graphics:	Optional



Single Engine network setup with two alternative clients.

* For optimal speed and security use Raid



Episode/Episode Engine

Hardware Setup Examples



Episode Engine - Single Deployment (cont.)

Alternative B

Episode Client / Episode Engine - Mac Pro 4 Cores

Processor: 2.66 GHz Dual-Core Intel Xeon (or faster)

Memory: 4 GB DDR2 (or more)

Hard drive B1*: 750 GB Serial ATA ADM@7200 -rpm

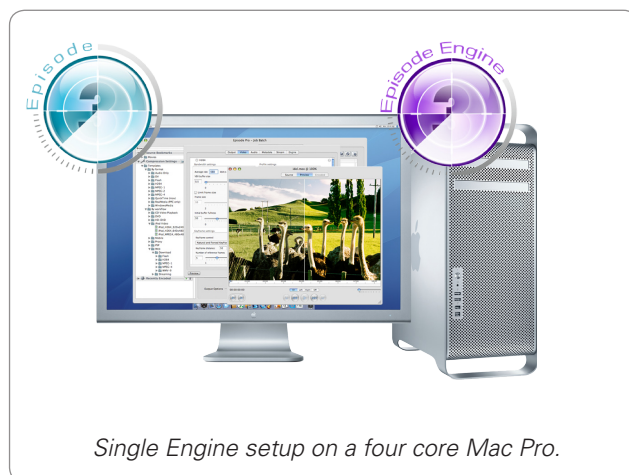
Hard drive B2*: 750 GB Serial ATA ADM@7200 -rpm (optional)

Hard drive B3*: 750 GB Serial ATA ADM@7200 -rpm (optional)

Hard drive B4*: 750 GB Serial ATA ADM@7200 -rpm (optional)

Graphics: Standard, recommended by Apple

Display: Customer Choice



Single Engine setup on a four core Mac Pro.

Alternative C

Episode Client / Episode Engine - Mac Pro 8 Cores

Processor: 3.0 GHz Quad-Core Intel Xeon

Memory: 8 GB DDR2 (or more)

Hard drive B1*: 750 GB Serial ATA ADM@7200 -rpm

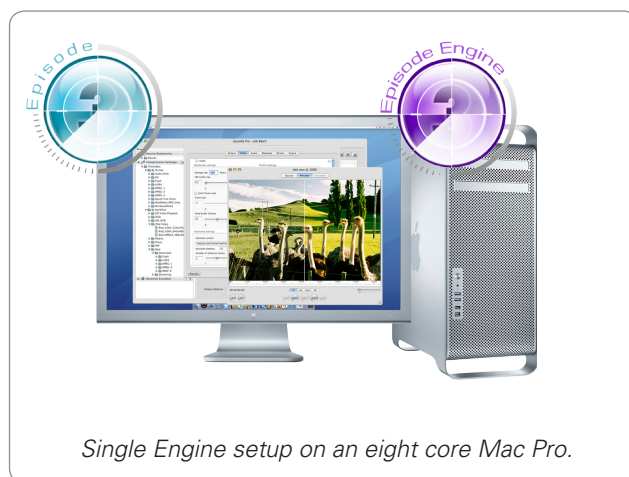
Hard drive B2*: 750 GB Serial ATA ADM@7200 -rpm (optional)

Hard drive B3*: 750 GB Serial ATA ADM@7200 -rpm (optional)

Hard drive B4*: 750 GB Serial ATA ADM@7200 -rpm (optional)

Graphics: Standard, recommended by Apple

Display: Customer Choice



Single Engine setup on an eight core Mac Pro.

* For optimal speed and security use Raid



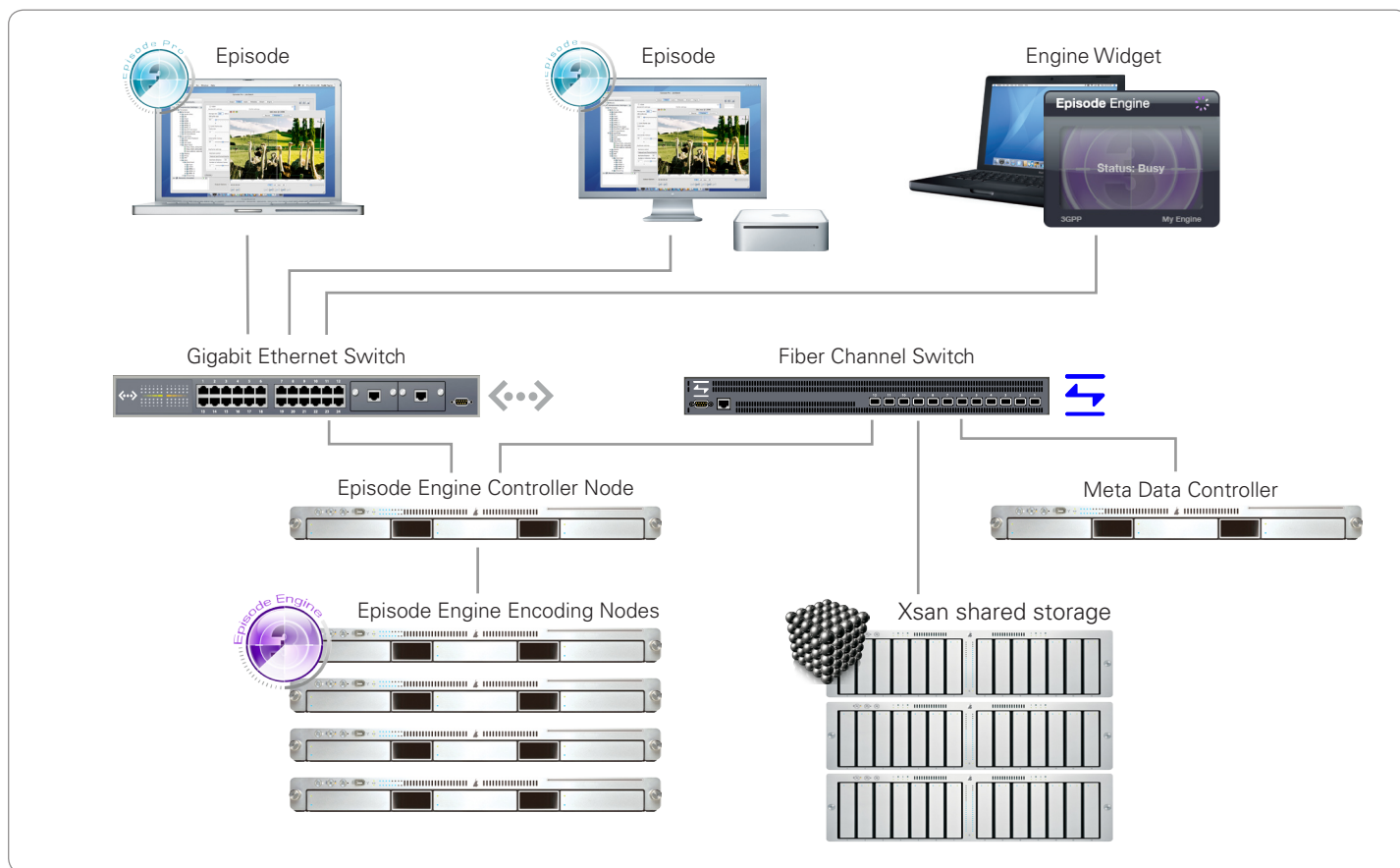
TELESTREAM

Episode/Episode Engine

Hardware Setup Examples



Episode Engine Cluster Deployment with separate storage (5 nodes)



Cluster Setup

Episode Client - Mac Mini / MacBook Pro

See recommended setup under Episode Engine Single Deployment, Alternative A

Episode Engine Controller Node - Xserve x 1

Processor:	Two 64 bit 2.66 GHz Dual-Core Intel Xeon (or faster)
Memory:	2 GB DDR2 (or more)
Hard drive B1:	80 GB Serial ATA ADM@7200 -rpm
Hard drive B2-3:	Not needed
Graphics:	Optional
Exp. Slot 1:	Dual Channel 4Gb Fiber Channel card

Episode Engine Encoding Nodes - Xserve x 4

Processor:	Two 64 bit 2.66 GHz Dual-Core Intel Xeon (or faster)
Memory:	4 GB DDR2 (or more)
Hard drive B1:	80 GB Serial ATA ADM@7200 -rpm
Hard drive B2-3:	Not needed
Graphics:	Optional
Exp. Slot 1:	Dual Channel 4Gb Fiber Channel card

Xsan Storage

Three Xserve RAIDs are recommended (one minimum). Note, one Gigabit Ethernet switch and a Fiber Channel Switch are needed. For more information on Xsan setup see www.apple.com



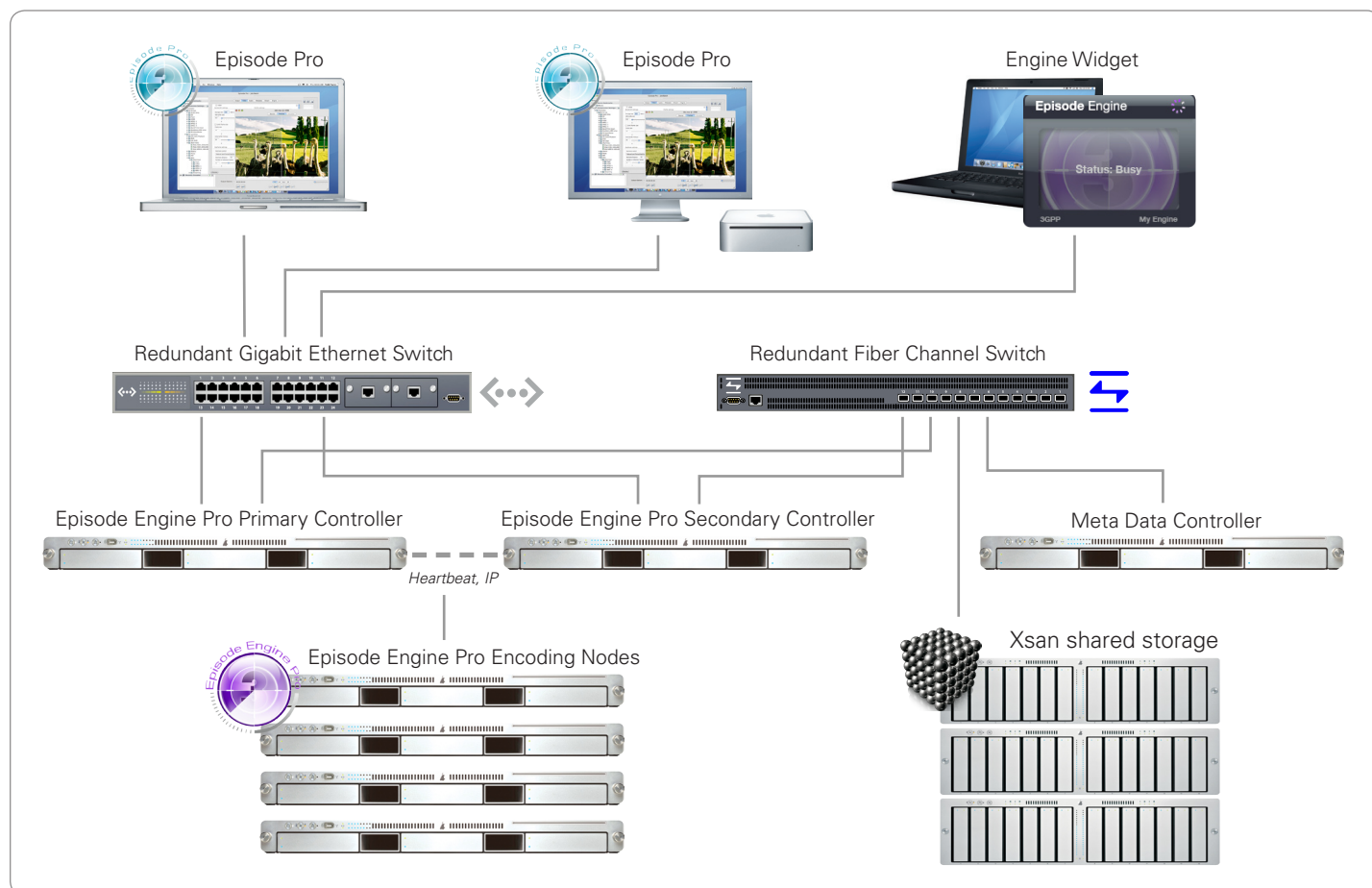
TELESTREAM

Episode/Episode Engine

Hardware Setup Examples



Episode Engine Cluster Deployment (5 nodes) with separate storage and Failover



Cluster Setup

Episode Pro Client - Mac Mini / MacBook Pro

See recommended setup under Episode Engine Single Deployment, Alternative A

Episode Engine Pro Controller Node - Xserves x 2

Processor:	Two 64 bit 2.66 GHz Dual-Core Intel Xeon (or faster)
Memory:	2 GB DDR2 (or more)
Hard drive B1:	80 GB Serial ATA ADM@7200 -rpm
Hard drive B2-3:	Not needed
Graphics:	Optional
Exp. Slot 1:	Dual Channel 4Gb Fiber Channel card
Power Supply:	Dual 650W Power Supply

Episode Engine Pro Encoding Nodes - Xserves x 4

Processor:	Two 64 bit 2.66 GHz Dual-Core Intel Xeon (or faster)
Memory:	4 GB DDR2 (or more)
Hard drive B1:	80 GB Serial ATA ADM@7200 -rpm
Hard drive B2-3:	Not needed
Graphics:	Optional
Exp. Slot 1:	Dual Channel 4Gb Fiber Channel card

Xsan Storage

Three Xserve RAIDs are recommended (one minimum).
Note, two Gigabit Ethernet switch and two Fiber Channel Switch are needed. For more information on Xsan setup see www.apple.com



TELESTREAM