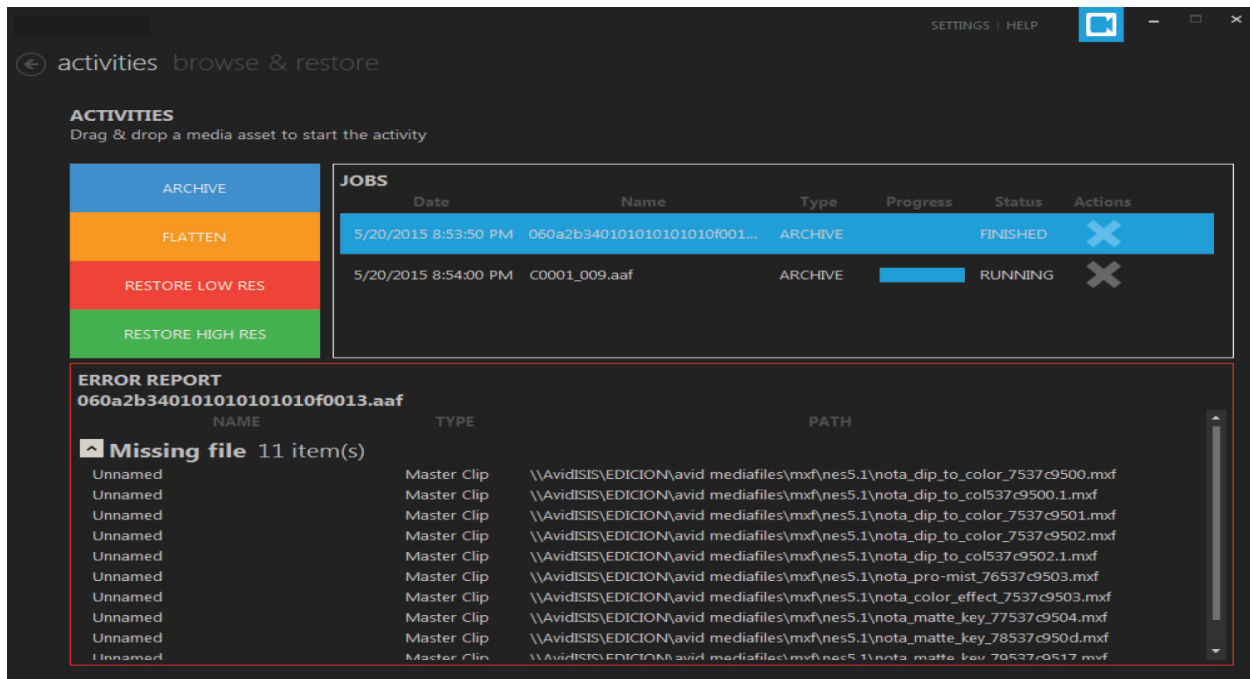


Kumulate Portal for AVID

Product Sheet



Kumulate Portal for AVID

The easiest path between your AVID and archive

Overview

The Kumulate Portal for Avid streamlines media interchange between your Avid editing system and your Telestream-managed archive. Users can archive, restore and flatten content simply by dragging and dropping it between their Avid editor or Interplay client application and the Portal. Providing a dedicated, elegant and responsive interface between your editors and our Kumulate engine, the Portal eliminates workflow obstacles and manual steps that distract from creativity.

- Moves media seamlessly between your Avid production systems and your archive
- Eliminates technical barriers to let your editors focus on creating great content
- Archive, restore and flatten content with a simple drag-and-drop to/from your Avid client
- Perform complete or partial restores of assets with original high-res media or low-res proxies
- Customizable metadata mapping
- Compatible with Avid Media Composer (with or without the Media Composer | NewsCutter option) and Interplay (Windows versions), plus stored Avid AAF files
- Works with standalone editors (no additional Avid options required) as well as Avid NEXIS and Interplay | Production

kumulate

Intelligent storage & asset
lifecycle management

telestream

www.telestream.net | info@telestream.net | tel +1 530 470 1300

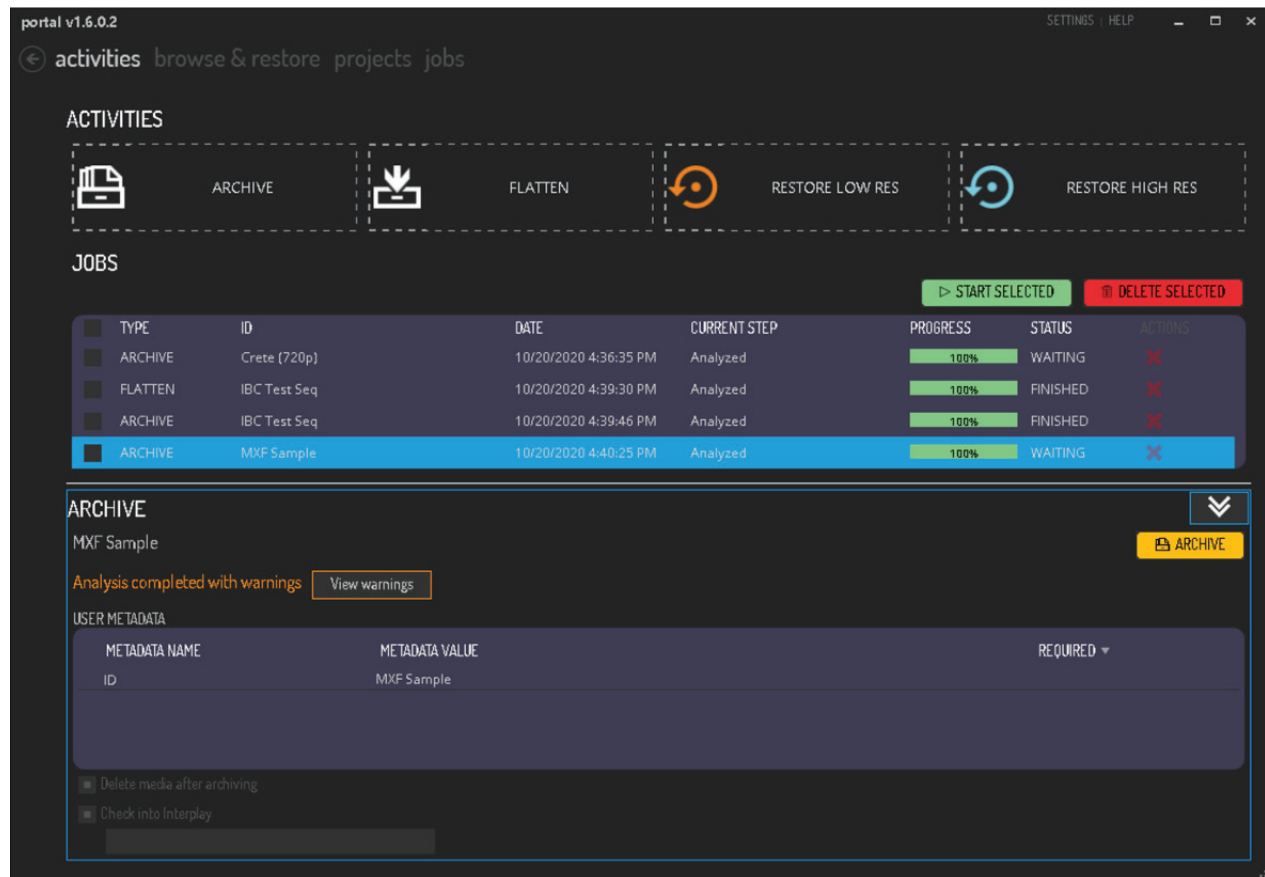
Effortless Archiving with Instant Feedback

Archiving your Avid sequences or master clips is as easy as dragging-and-dropping them from your Avid interface into the Portal. Sequences can be flattened automatically, and sent to any Telestream-managed archive or workflow. Valuable metadata is preserved, with customizable mapping between Avid and Kumulate. In addition to job status monitoring, the Portal also provides immediate notification of issues such as unrendered effects and offline media in your sequences that would impede the archiving process, giving you time-saving feedback not possible in typical, hot-folder based workflows.

Intuitive Access to Your Archived Assets

The Kumulate Portal for Avid makes it easy to find and restore the archived media you need. Search your archive directly from the Portal, then simply drag-and-drop the assets you want into the Avid client to restore them into your production environment.

You can retrieve low-resolution proxies or original high-res media, and restore the full asset or a partial segment of the asset. Behind the scenes, Kumulate automatically retrieves the content from whichever storage tier it resides on, whether online, nearline or deep storage – completely transparently to the user.



Kumulate AVID Portal

