

Pipeline multichannel live ingest

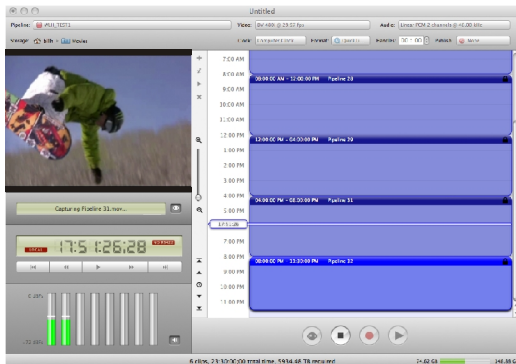
Edit while encoding with Final Cut Pro

Pipeline is a hardware encoding device that ingests video from tape or live sources into Final Cut Pro.

Pipeline is a shared network device that is accessible to any user connected to the network — offering a more cost-effective alternative to traditional capture card solutions.

Pipeline Control software enables the scheduled capture and playout of video feeds. Files captured via Pipeline are available to editing systems while they are being encoded.

- Pipeline accepts SDI video feeds and encodes to: ProRes 422, DV25, IMX 30/40/50, ProRes 422 HQ, DVCProHD, uncompressed 8-bit SD.
- Pipeline Control application schedules automatic clip ingest on a 24 hour schedule. Clip name and Final Cut Pro metadata can be pre-logged into a clip, making multi-clip editing a breeze.
- In multi-source environments, clips from Pipeline are useable as they are being captured, so editing can begin as the action is happening – enabling users to get breaking news and live sport events on-air faster.
- Pipeline can be used to manage the capture of any number of SDI sources.
- A single Mac can control multiple Pipelines. This leaves your Final Cut workstations free to do what they do best, edit.



Copyright © 2009 Telestream, Inc. Telestream is a registered trademark and Pipeline is a trademark of Telestream, Inc. All other trademarks are the property of their respective owners.

April 2009

www.telestream.net
info@telestream.net
Nevada City, CA USA
tel +1 530 470 1300



TELESTREAM

www.telestream.net