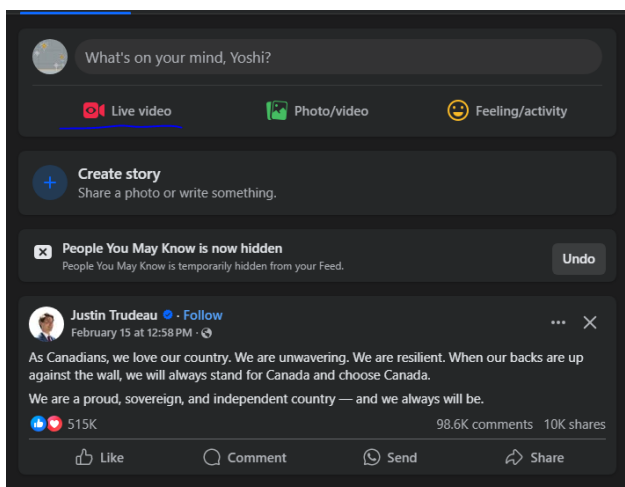


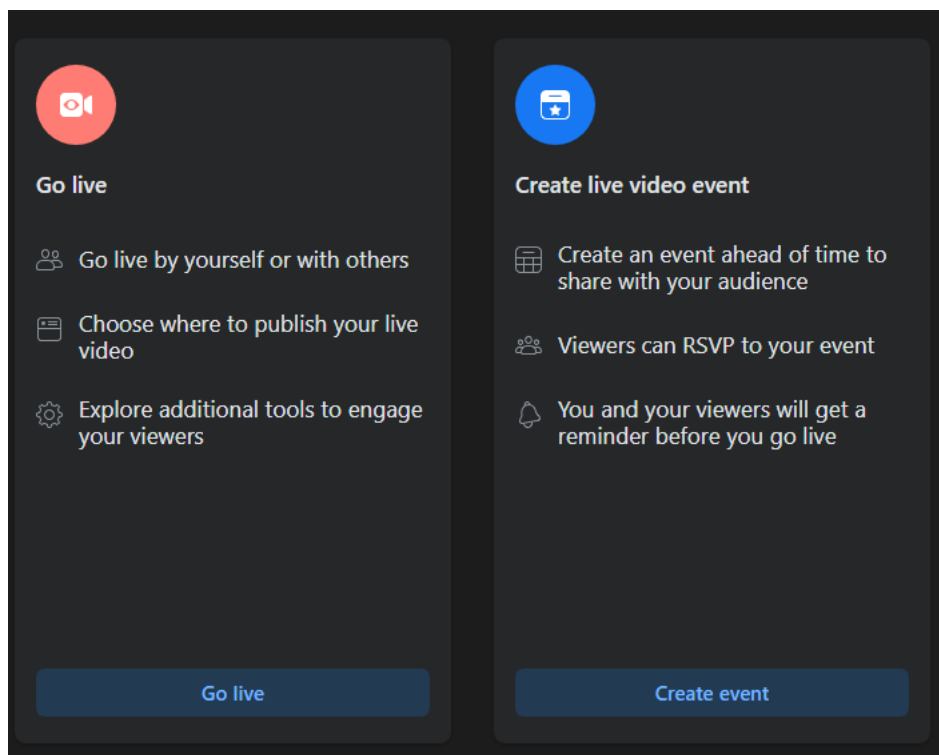
## Lightspeed Live Stream Facebook Live Notice

Effective **February 28, 2025**, Facebook has deprecated its direct RTMP integration and customers using Live Stream to stream to Facebook Live will need to make the following changes to their Facebook Live workflows.

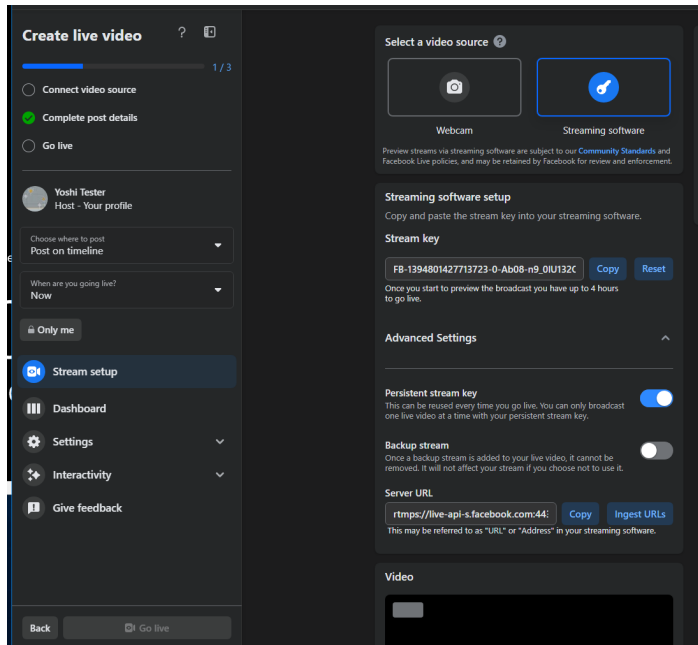
1. Login to FB and click the live video at the top of your user profile/page/group.



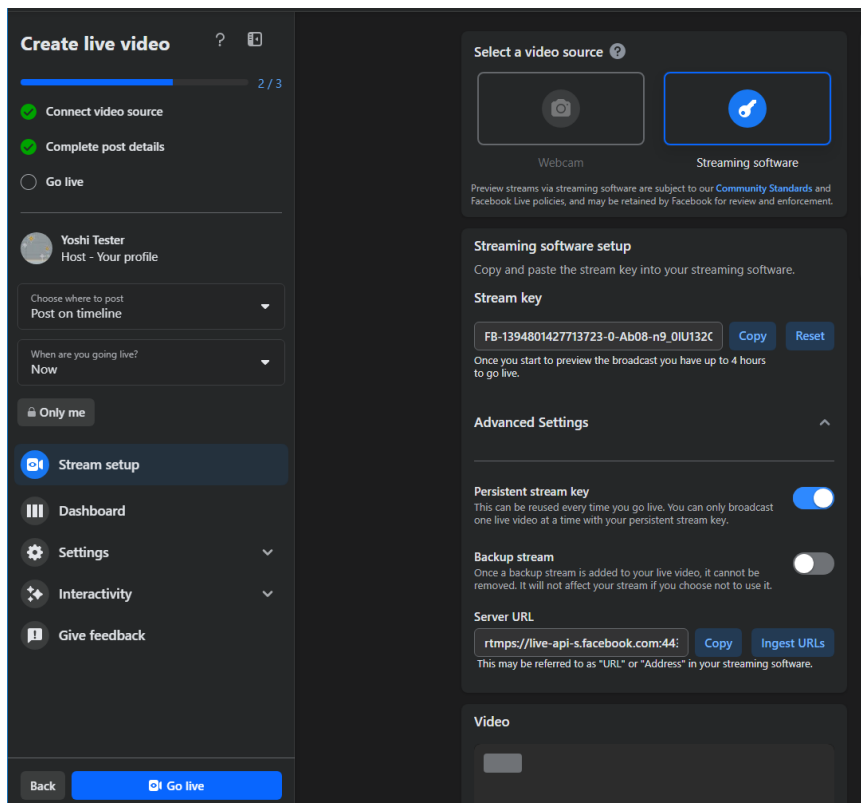
2. Click the Go live button (or create event). Both will eventually give you a stream key (looks like FB-1960263651167495-0-Ab2u6qSOd0dts-kw\_\_t5v2su). Copy this.



3. In the Stream Channel (with an RTMP Package) enter the stream key from step two into the Stream name field. For the URL field use <rtmps://live-api-s.facebook.com:443/rtmp/>.



4. Save settings and start Channel.
5. In the FB live video page you should now have a checkmark next to the connect to video source. You can now click the go live button in FB and that content will be live to whatever audience you've selected (private, friends, public).



Please contact Telestream if you have questions or require additional information about these changes.