



---

# User Guide

2.0

---

The latest version of the Wirecast Gear User Guide is available at:  
<http://www.telestream.net/pdfs/user-guides/Wirecast-Gear-2-User-Guide.pdf>



# Contents

## **Preface 5**

## **Introduction to Wirecast Gear 9**

- Introduction 9
- Overview 9
  - Wirecast Gear Models 9
  - Features 10
- Unpacking Wirecast Gear 10
- Registering Wirecast Gear 11
- Specifications 11
  - Operating System Specifications 11
  - Software Specifications 11
  - Hardware Specifications 12

## **Wirecast Gear Panels 13**

- Introduction 13
- Front Panel 13
- Rear Panel 14
- Rear Panel Differences 16

## **Installation of Wirecast Gear 19**

- Introduction 19
- Physical Mounting 19
- Connections 20

## **Using Wirecast Gear 23**

- Introduction 23
- Getting Started 23
- First Time Boot-up 23
- Registration 24

## **Troubleshooting and Updating Wirecast Gear 27**

- Introduction 27
- General 27
- Drive Initialization 28
- Windows Update Issues 29

## **Support for Wirecast Gear 31**

- Introduction 31
- Obtaining Support | Information | Assistance 31
- Return Merchandise Authorization (RMA) Procedure 33
  - Support and RMA Process 33

## **Regulatory Compliance Statements 35**

- Introduction 35

# Preface

## Copyrights and Trademark Notices

Copyright 2019 Telestream, LLC. All rights reserved. No part of this publication may be reproduced, transmitted, transcribed, altered, or translated into any languages without written permission of Telestream, LLC. Information and specifications in this document are subject to change without notice and do not represent a commitment on the part of Telestream.

Telestream, CaptionMaker, Episode, Flip4Mac, FlipFactory, Flip Player, Gameshow, GraphicsFactory, Lightspeed, MetaFlip, Post Producer, ScreenFlow, Split-and-Stitch, Switch, Tempo, TrafficManager, Vantage, VOD Producer and Wirecast, are registered trademarks and Cricket, e-Captioning, iQ, iVMS, iVMS ASM, Inspector, MacCaption, Pipeline, Vidchecker, and Surveyor are trademarks of Telestream, LLC. All other trademarks are the property of their respective owners.

## Limited Warranty and Disclaimers

Telestream, LLC (the Company) warrants to the original registered end user that the product will perform as stated below for a period of one (1) year from the date of shipment from factory, unless the customer has purchased additional warranty periods.

The Product hardware components, including equipment supplied but not manufactured by the Company but NOT including any third party equipment that has been substituted by the Distributor for such equipment (the "Hardware"), will be free from defects in materials and workmanship under normal operating conditions and use.

## Warranty Remedies

Your sole remedies under this limited warranty are as follows:

The Company will either repair or replace (at its option) any defective Hardware component or part with new or fully functioning hardware components.

Components may not be necessarily the same, but will be of equivalent operation and quality.

## Software Updates

Except as may be provided in a separate agreement between Telestream and You, if any, Telestream is under no obligation to maintain or support the Software and Telestream has no obligation to furnish you with any further assistance, technical support, documentation, software, update, upgrades, or information of any nature or kind.

---

**Note:** Wirecast Gear includes 90 days of complimentary support on both hardware and software.

---

## Restrictions and Conditions of Limited Warranty

This Limited Warranty will be void and of no force and effect if (i) Product Hardware or Software Media, or any part thereof, is damaged due to abuse, misuse, alteration, neglect, or shipping, or as a result of service or modification by a party other than the Company, or (ii) Software is modified without the written consent of the Company.

## Limitations of Warranties

THE EXPRESS WARRANTIES SET FORTH IN THIS AGREEMENT ARE IN LIEU OF ALL OTHER WARRANTIES, EXPRESS OR IMPLIED, INCLUDING, WITHOUT LIMITATION, ANY WARRANTIES OF MERCHANTABILITY OR FITNESS FOR A PARTICULAR PURPOSE. No oral or written information or advice given by the Company, its distributors, dealers or agents, shall increase the scope of this Limited Warranty or create any new warranties.

Geographical Limitation of Warranty—This limited warranty is valid only within the country in which the Product is purchased/licensed.

Limitations on Remedies—YOUR EXCLUSIVE REMEDIES, AND THE ENTIRE LIABILITY OF TELESTREAM, LLC WITH RESPECT TO THE PRODUCT, SHALL BE AS STATED IN THIS LIMITED WARRANTY. Your sole and exclusive remedy for any and all breaches of any Limited Warranty by the Company shall be the recovery of reasonable damages which, in the aggregate, shall not exceed the total amount of the combined license fee and purchase price paid by you for the Product.

## Damages

TELESTREAM, LLC SHALL NOT BE LIABLE TO YOU FOR ANY DAMAGES, INCLUDING ANY LOST PROFITS, LOST SAVINGS, OR OTHER INCIDENTAL OR CONSEQUENTIAL DAMAGES ARISING OUT OF YOUR USE OR INABILITY TO USE THE PRODUCT, OR THE BREACH OF ANY EXPRESS OR IMPLIED WARRANTY, EVEN IF THE COMPANY HAS BEEN ADVISED OF

THE POSSIBILITY OF THOSE DAMAGES, OR ANY REMEDY PROVIDED FAILS OF ITS ESSENTIAL PURPOSE.

Further information regarding this limited warranty may be obtained by writing:

Telestream, LLC  
848 Gold Flat Road  
Nevada City, CA 95959 USA

You can call Telestream, LLC via telephone at (530) 470-1300.





# Introduction to Wirecast Gear

## Introduction

This section presents an overview of Wirecast Gear models, features, etc., and how to unpack, setup, and register it. Specifications are also provided.

## Topics

- [Overview](#)
- [Unpacking Wirecast Gear](#)
- [Registering Wirecast Gear](#)
- [Specifications](#)

## Overview

Wirecast Gear is an integrated solution for live production, streaming, video ingest and more. It is designed to provide an easy to operate experience and is based on a standard Windows personal computer.

---

**Note:** Consult the *Wirecast (software) User Guide* included with Wirecast Gear. You can also download this user guide from the Telestream web site at:

<http://www.telestream.net/telestream-support/wire-cast/help.htm>

---

## Wirecast Gear Models

Wirecast Gear is available in these models:

- 310 – 4x HDMI Capture: 1x QuickSync x264 Encode + Many MOV Encodes
- 320 – 4x SDI Capture: 1x QuickSync x264 Encode + Many MOV Encodes
- 420 – 5x SDI Capture + 1x SDI Output: 4x NVENC x264 Encodes + Many MOV Encodes

---

**Note:** Additional encodes possible but may require reduced workflow.

---

## Features

- Windows 10 IoT Enterprise LTSC 64-bit OS
- 4 Port (SDI or HDMI) high quality video ingest (5 ports on Gear model 420)
- Wirecast Pro
- Convertible mini case with rubber feet for table-top use and included rackmount brackets for installing in approved flight/transport cases or in-place rack configurations. Unit has no platter-based hard drives, making it ideal for transport
- Extensive source inputs including professional video connectors
- Multiple LAN ports, USB 3.1 (including Type C) and more
- USB 3.1 (including Type C) and more
- ISO recording with full Instant Replay capability
- Three (model 310/320) or four (model 420) digital video output ports for multiple display configuration and on-site large format display outputs (IMAG) with lowest latency including support for up to UHD/4K resolutions

---

**Note:** 4K monitor outputs can increase GPU usage substantially. Use with caution as this can negatively impact GPU heavy work flows (High frame rate live icons, Multi-viewer, etc.).

---

- Live source processing including scaling, rotation, color correction and keying.
- Compatible with industry standard applications such as Adobe CC, Microsoft Office and most standard Windows 10 compatible applications/utilities
- Boot-time recovery option allows quick recovery to factory settings in case of system corruption or failure. All Telestream loaded applications will be recovered (user applications must be reinstalled)

## Unpacking Wirecast Gear

Unpack the contents of the shipping container; identify each component and determine that it has arrived in satisfactory condition.

If there is shipping damage to the box, note it on your shipping documents and contact the carrier immediately. If the computer or box contents are damaged in any way, you should file a claim with the carrier and notify Telestream immediately.

---

**Note:** Save the shipping container and packaging materials and store them in a safe place. If you require service, or need to relocate your Wirecast Gear, the packaging materials are required.

---

## Shipping Container Contents

Each Wirecast Gear box contains the following:

- Wirecast Gear computer
- Wireless Keyboard/Mouse combo
- Power cord
- Plastic bag

## Registering Wirecast Gear

Registering your Wirecast Gear system is a requirement to gain access to your licensed copies of Telestream-bundled software. It also ensures the following:

*Safety*—so you'll be kept informed of product feature updates and improvements

*Service*—to receive the excellent Telestream warranty service and technical support

*Security*—in the event of loss, theft or catastrophic events, your registration may serve as proof of purchase for your insurance carrier

Registration is quick, easy, and important—follow these steps:

1. Go to the Wirecast Gear registration web page: <http://www.telestream.net/telestream-support/Wirecast-Gear/register.htm>
2. Complete the Wirecast Gear registration.
3. Click Submit to complete registration.

## Specifications

The following topics summarize Wirecast Gear specifications.

---

**CAUTION:** Wirecast Gear is a sealed device, with no user-serviceable parts or user-accessible expansion slots. You should never open or attempt to upgrade or alter the computer. Doing so exposes you to electrical hazard, may damage the unit, and may invalidate your warranty. If you have hardware or software problems with your Wirecast Gear, follow the steps in the [Return Merchandise Authorization \(RMA\) Procedure](#) later in this guide to obtain service.

---

## Operating System Specifications

Wirecast Gear is pre-installed with Windows 10 IoT Enterprise LTSC 64-bit OS. Please see the Microsoft web site for specifications.

## Software Specifications

- Telestream *Wirecast Pro* application software

- Telestream *Switch* application software
- NewBlueFX Titler Live

## Hardware Specifications

- Intel Core XEON E-2176G 12M Six Core 3.7GHz/4.7GHz Turbo
- Intel UHD Graphics 630 (model 310/320)
- NVIDIA QUADRO (model 420)
- Memory - 16GB DDR4 Dual Channel Memory
- System Drive - M.2 NVMe System Drive
- Storage Drive(s) - High speed SATA 6Gb/s SSD
- Video Ingest - Four (model 310/320) or five (model 420) channel professional camera inputs with HDMI or SDI
- Motherboard features
  - Intel® USB 3.1 with USB Type-C™
  - 115dB SNR HD Audio with Built-in Rear Audio Amplifier
  - Dual Intel® GbE LAN RJ45
  - PS/2 Keyboard/Mouse Port
  - USB 3.0 Ports - 4 rear/2 front
  - Display outputs - DVI-D, dual HDMI, dual DP (310/320), quad DP (model 420)
- Wireless Keyboard and Mouse combo
- Power Supply: AC input, auto-sensing, suitable for most countries worldwide
  - Input Range: 90 ~ 264Vac (RMS), Full Range Input
  - Frequency: 47 ~ 63Hz
  - Input Current: Max 6A (RMS) @ 115Vac, 3A (RMS) @ 230Va
- Dimensions: 16.55 x 9.85 x 2.25 inches, 2.0 U rackmount height

---

**Note:** Wirecast Gear has no user-serviceable parts. Any repair or additional PCIe card installation must be performed by Telestream or an authorized Telestream service technician.

---

# Wirecast Gear Panels

## Introduction

The following topics describe the Wirecast Gear front and rear panels.

---

**Note:** Please *do not make any connections* just yet. First, read the panel and connector descriptions and then proceed to the [Installation of Wirecast Gear](#) topic for steps to install and connect to the unit.

---

Wirecast Gear is available in HDMI and SDI configurations. Both configurations share the same front panel features, but each configuration has a unique rear panel. Wirecast Gear series 300 models include 4-channel HDMI (310) or SDI (320) professional inputs. Wirecast Gear model 420 include five SDI capture inputs and one SDI output.

## Topics

- [Front Panel](#)
- [Rear Panel](#)
- [Rear Panel Differences](#)

## Front Panel

Wirecast Gear has the following connectors on the front panel.



**USB 3.0 Ports** The USB 3.0 port supports the USB 3.0 specification and is compatible to the USB 2.0/1.1 specification. Use this port for USB devices.

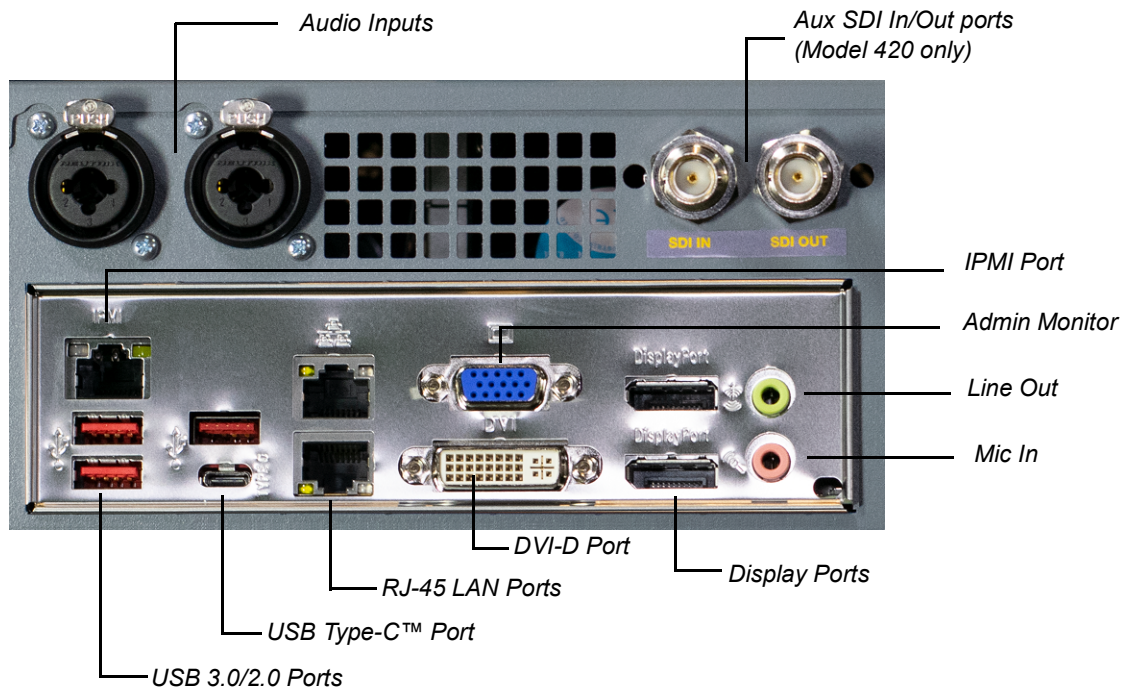
**Line Out)** Use this output for headphones or a speaker system.

**Mic In** Use this input for Microphones. Many live producers choose to use a USB-based external audio configuration with either a simple A/D device with professional connectors or a full audio mixer panel for tactile control of audio levels. Contact the reseller who sold you your Wirecast Gear unit for specific brand and model information.

**Power Switch** This button turns the power on and off. When on, a white light is displayed.

## Rear Panel

The Rear Panel connectors have the following functionality.



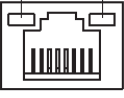
**Audio Inputs** Two combination mic (XLR) and line (TRS) audio inputs.

**Aux SDI Input and Output Ports (Model 420 only)** The *SDI IN* is the fifth input and the *SDI OUT* is the single output.

**USB 3.1 Ports** Three USB ports that support the USB 3.1 specification and are compatible to the USB 3.0/2.0/1.1 specification. Use this port for USB devices. (There are also two additional USB ports on the front panel).

**USB Type-C™ Port** The USB Type-C port supports the USB 3.1 specification and is compatible to the USB 3.0/2.0/1.1 specification. Use this port for USB devices.

**RJ45 LAN Ports** Two GbE RJ45 ports. These Gigabit Ethernet LAN ports provides Internet connection at up to 1 Gbps data rate. The following describes the states of the LAN port LEDs.

 <p>LAN Port</p>	Connection/Speed LED:		Activity LED:	
	State	Description	State	Description
	Orange	1 Gbps data rate	Blinking	Data transmission or receiving is occurring
	Green	100 Mbps data rate	On	No data transmission or receiving is occurring
	Off	10 Mbps data rate		

**DVI-D Port** The DVI-D port conforms to the DVI-D specification and supports a maximum resolution of 1920x1200@60 Hz (the actual resolutions supported depend on the monitor being used). Connect a monitor that supports DVI-D connection to this port. (This port is disabled on 400 series Gear units.)

---

**Note:** The DVI-D port does not support D-Sub connection by adapter.

---

**Display Ports** Two Displayport outputs. These are *not* HDMI ports.

---

**Note:** The bottom DP port on the 300 series cannot be adapted and needs to be connected to a native DP monitor. The top DP can be adapted to HDMI or DVI but not the bottom one.

---

**IPMI Port** This is an IPMI port, *not* an Ethernet port.

**Admin Monitor** Computer monitor port for Administrator use only.

**Line Out (Green)** Line out jack. This jack supports audio amplifying function. For better sound quality, it is recommended that you connect your headphone/speaker to this jack (actual effects may vary by the device being used). Use this audio jack for a headphone or 2-channel speaker.

**Mic In (Pink)** The Mic in jack. Microphones must be connected to this jack.

---

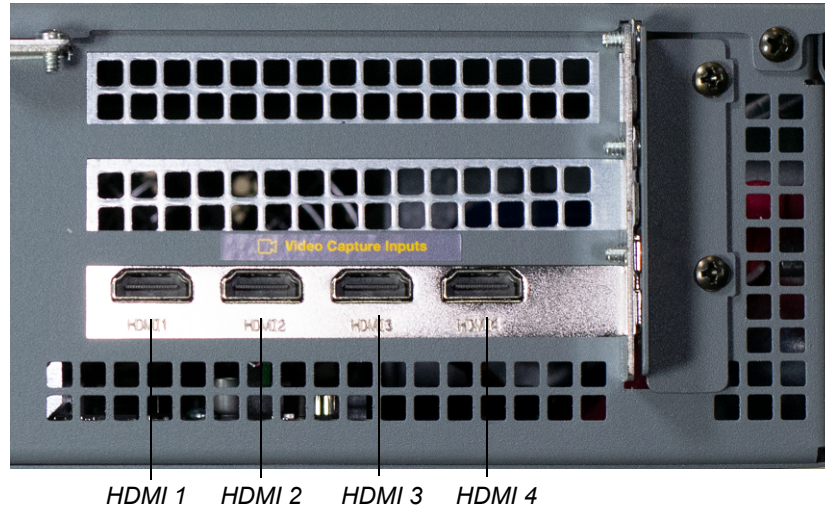
**WARNING:** When removing any mic cable, pull it straight out from the connector to prevent causing a short inside the cable connector.

---

## Rear Panel Differences

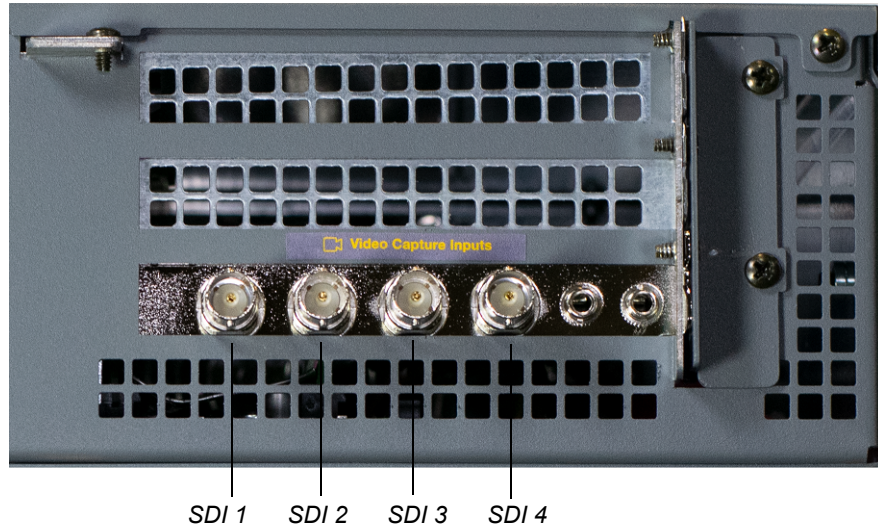
Depending on the Wirecast Gear model, four *HDMI* inputs (model 310), four *SDI* inputs (models 320), or four *SDI* inputs and 4 Display Ports (model 420) are provided on the right side of the rear panel. The location and numbering of inputs are shown below.

### Model 310 rear panel with HDMI Only

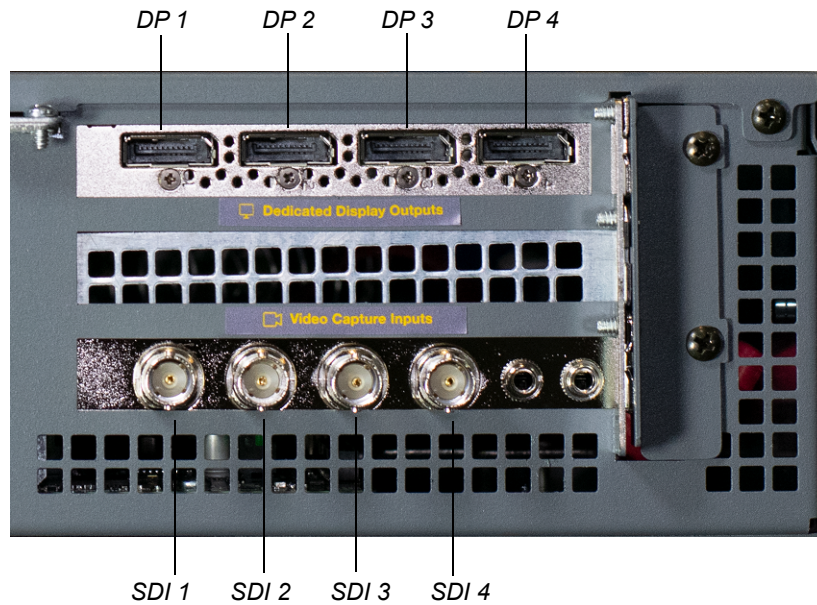




### Model 320 rear panel with SDI only



### Model 420 rear panel with DP and SDI



Connect the inputs to your video sources, such as cameras, DVD players, computers, editors, graphics cards, and other devices that produce a video output that you want to use as an input for live production.



# Installation of Wirecast Gear

## Introduction

This section shows you how to install Wirecast Gear. This includes physical mounting and wireless connections.

---

**Note:** Before installing Wirecast Gear, read through the section on [Wirecast Gear Panels](#).

---

## Topics

- [Physical Mounting](#)
- [Connections](#)

## Physical Mounting

Wirecast Gear comes configured for table-top use with pre-attached feet. The unique size and shape of Wirecast Gear is designed to occupy a minimum of space while making connectors and cables easily accessible.

Also included with all Gear systems are two pre-mounted rack-mount "ears" and screws that allow the system to fit into a standard 19-inch rack and take up 2 RU (Rack Units). This configuration is useful for in-place racks and mobile flypacks where convenient and safe transport of your live production system is required.

---

**Note:** The rack-mount configuration will require removal of the rubber feet to avoid obstructing the rack space below. Failure to remove the feet may result in an inability to mount the unit in the bottom most position of a rack, or if the rack space immediately below is already occupied.

---

## Connections

To make connections to your Wirecast Gear system, refer to [Wirecast Gear Panels](#) for connector functions and locations, and then follow these steps.

---

**Note:** The Wirecast Gear system is configured to work with up to three displays.

---

1. If available, plug a network cable into one of the available RJ45 Ethernet jacks.

---

**Note:** After it is powered on, Wirecast Gear will attempt to automatically connect to your installed network configuration (via LAN). If your network requires authentication or specific configuration, please check with your network administrator to determine computer and network setting requirements.

---

2. Plug HDMI or SDI cables into the video input connectors on the right rear panel.
3. Plug a standard computer monitor into either the DP (model 310/320) or DVI (model 420) monitor output ports on the back of the unit.

---

**Note:** Every Wirecast Gear unit has two (model 310/320) or four (model 420) display outputs and one DVI-D output. These are standard display outputs that are used for connecting computer monitors. If you have more than one monitor installed, Wirecast will allow you to send a full screen output of your program to the second display as a program monitor. These are also the ports to be used for in-venue, presentation displays (also known as IMAG) as they provide for the lowest latency output.

---

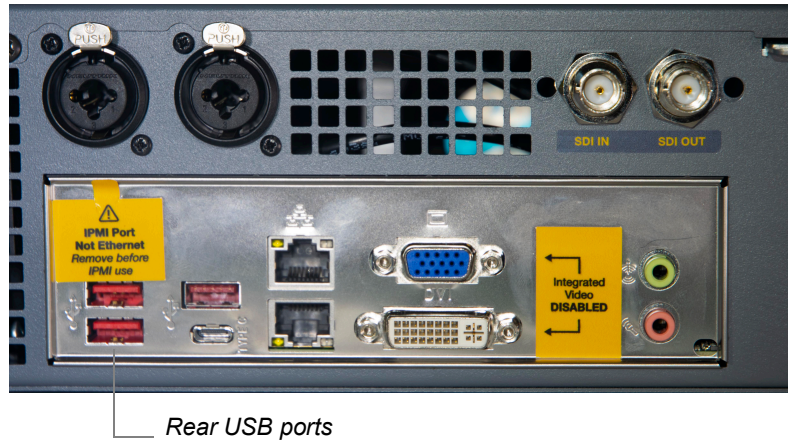
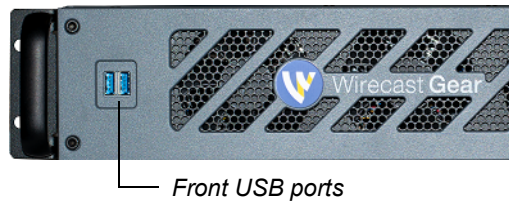
4. Make audio input and output connections to Mic Input and Speaker Output.
5. Locate the USB dongle shipped with WC Gear in the KB/Mouse box.

---

**Note:** The dongle communicates to both the mouse and the keyboard.

---

6. Insert the USB dongle into a USB port on the front or back of the Wirecast Gear box.



7. Turn the keyboard and mouse on, using the power switch on each.
8. After all connections have been made, plug in the attached power cord to provide power to the unit. For input power requirements, see [Specifications](#).
9. Turn on Wirecast Gear unit by pushing the power button on the front. The button will light, and the unit will begin to boot up.



# Using Wirecast Gear

## Introduction

This section shows you how to get started using Wirecast Gear and what to do when you boot up for the first time.

## Topics

- *Getting Started*
- *First Time Boot-up*
- *Registration*

## Getting Started

To get started using Wirecast Gear, follow these steps:

1. If you aren't familiar with Wirecast, read the *Wirecast User Guide*. You can download it from the Telestream web site at:  
<http://www.telestream.net/telestream-support/wire-cast/help.htm>
2. Personalize Windows as explained in the *First Time Boot* topic below.
3. Create individual Windows user accounts on the Wirecast Gear computer, if desired.

You are now ready to start using Wirecast to stream your live presentations.

## First Time Boot-up

Every Wirecast Gear unit includes a pre-activated copy of Windows 10 IoT Enterprise LTSC 64-bit. There is no need to enter a serial number or product key.

When you first power up Wirecast Gear, you are prompted to configure Windows for your locale and personal preferences. You will be taken through the following steps:

1. Choose *Windows 10* as your operating system.
2. Select your region (United States, etc.).
3. Select a keyboard layout (US, etc.).

4. Configure a second keyboard (if you have one), otherwise select *Skip*.
5. Accept the Windows 10 license agreement.
6. Sign in using your Microsoft account.

---

**Note:** If you do not have an account and do not want to create one, click *Domain Join Instead*.

---

7. Enter a user name.
8. Enter (and re-enter) a password.
9. Provide answers to three security questions, as prompted.
10. Respond to the “Do more across devices” prompt.
11. Select *Accept* to choosing privacy.

After a brief period of configuration, your Wirecast Gear will boot for the first time into Windows 10.

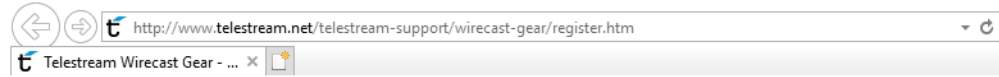
## Registration

Wirecast Gear must be registered before you can begin using it. To register Wirecast Gear, double-click the *REQUIRED-Register Your Gear* icon on the desktop.





When the registration form from the Telestream website displays in your browser, enter the required information, check the *I'm not a robot* box (and respond accordingly), then click *Register*.



## Wirecast Gear Registration



Please fill out the form below to register your Wirecast gear and receive your Switch Plus and Wirecast Pro

\* Who did you purchase from?  Telestream  Reseller

\* First Name:

\* Last Name:

Company:

\* Phone:

\* Email:

\* Address:

\* City:

\* Industry:

\* Country:

\* Serial Number:

[How to find your serial number](#)

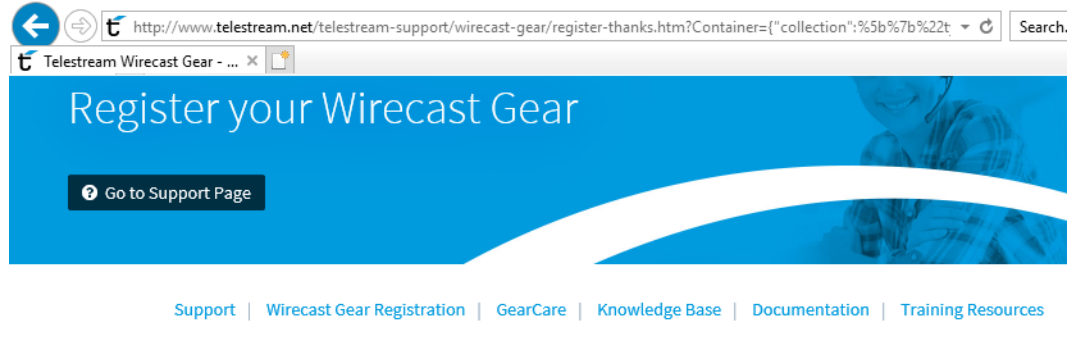
GearCare Serial Number:

Register

I'm not a robot



After you have successfully registered Wirecast Gear, you will be provided with three license keys for: Wirecast Pro, Switch Player and NewBlue Titler Live. Use these keys to license these products, which are provided with Wirecast Gear.



## Thank you for registering your Wirecast Gear!

Here are your software serial numbers:

**Wirecast Pro - Win : P4Q9-8YBP-UH6F-8YBP-UH6F**

1. Open Wirecast and from the Wirecast dropdown menu, select File/Preferences/Licenses
2. Copy and paste the serial number provided above, and click "Activate".
3. Enter your admin password as requested, then you will see "Wirecast is now unlocked".

**Switch 4 Player - Win : GP77-UW3V-3DPB-UW3V-3DPB**

1. Open Switch and go to File > Preferences, then the License tab.
2. Click Activate and enter the serial number exactly as it appears on this order confirmation.
3. Click Activate.

**NewBlue Titler Live : NBCF951D-B09B6F-266036 B09B6F-266036**

When you launch NewBlue, you will be greeted with the NewBlue App Manager. Create a new account or log in with your existing NewBlue Account using the same information you use for NewBlueFX.com. Once you create your account, you will see a list of the current products in the Products tab, click the "Enter Serial" button and paste the above license.

**Note:** *If you don't run this NewBlueFX App Manager to login and enter your serial number, you can still apply a title in Wirecast, but may see a watermark.*

---

**Note:** The licensees shown above are not valid license numbers.

---

# Troubleshooting and Updating Wirecast Gear

## Introduction

This section shows you how to troubleshoot Wirecast Gear and how to get updates

## Topics

- [General](#)
- [Drive Initialization](#)
- [Windows Update Issues](#)

## General

If your Wirecast Gear computer does not operate as expected, the following tips may provide assistance.

---

**CAUTION:** Wirecast Gear is a sealed device, with no serviceable parts and no internal peripheral bays. Please do not open the chassis to try to diagnose the hardware failure yourself, unless permitted to do so. This will void your warranty with Telestream and our manufacturer.

---

- Close any programs (except Wirecast) that you are not using because other programs can take up too much memory.
- Save any work in progress, then close and reopen Wirecast.
- Restart the computer. Random problems can sometimes be resolved by a restart. Be sure to save your work before you shut the computer down.

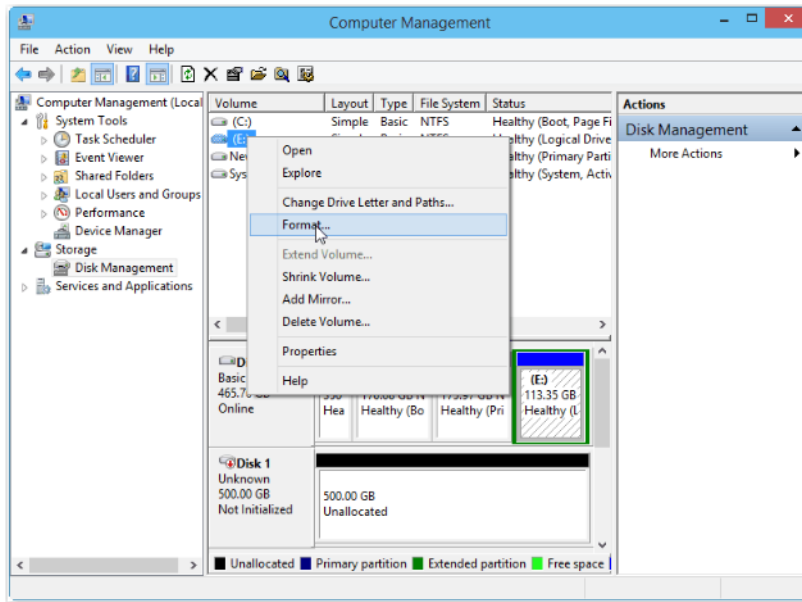
If you cannot resolve an issue yourself, see [Obtaining Support | Information | Assistance](#).

## Drive Initialization

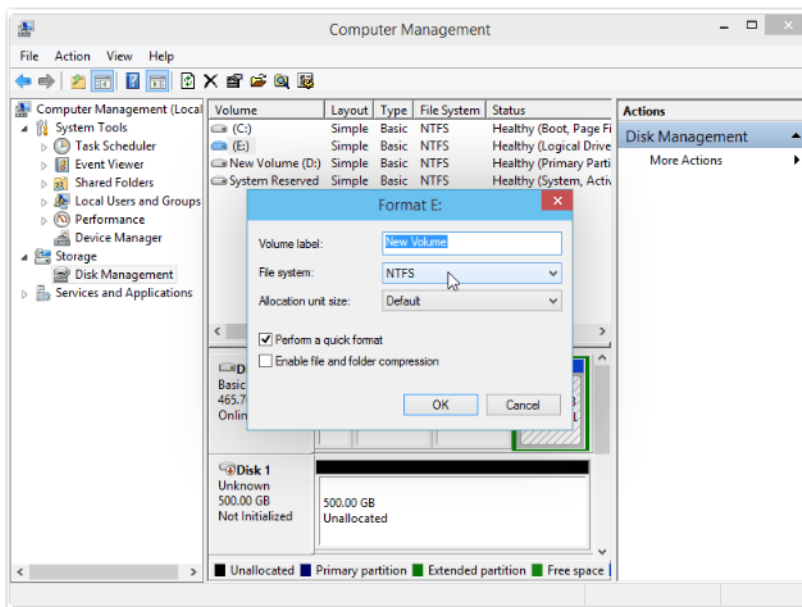
If you have received a Wirecast Gear unit and it is missing the secondary hard drive in Windows, but you can see it in Disk Management (right click on the start button, choose disk management), the drive is just in need of initialization.

To do this, follow these steps:

1. Open *Disk Management*, right click the partition you need to format (partition D), then select *Format*.



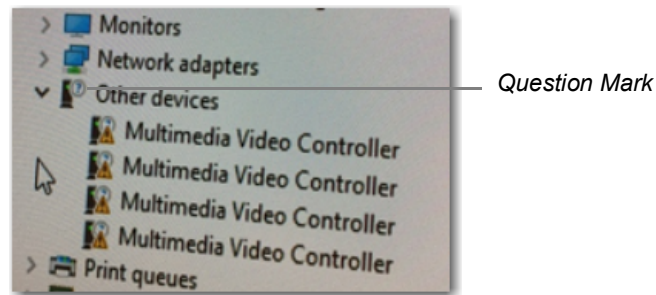
2. In the pop-up window, set file system and cluster size, then click *OK*.



Your drive is now accessible in Wirecast and Windows.

## Windows Update Issues

If you receive a question mark (?) with a yellow exclamation mark next to the capture devices, you may be experiencing a Microsoft Windows update issue.



Microsoft issued a statement updates will cause Windows computers (including Wirecast Gear) to lose their drivers to capture devices. Below is a link to an article that further explains the Microsoft Windows update issue:

<http://www.howtogeek.com/243581/windows-10-may-delete-your-programs-without-asking/>.



# Support for Wirecast Gear

## Introduction

This section shows you how to obtain customer support for Wirecast Gear and how to make returns.

## Topics

- [Obtaining Support | Information | Assistance](#)
- [Return Merchandise Authorization \(RMA\) Procedure](#)

## Obtaining Support | Information | Assistance

Support options for your Wirecast Gear are listed and briefly described below. Provide your organization name, and contact information, and the serial number of the affected unit. If the problem cannot be resolved remotely, request an RMA (Return Material Authorization).

<b>Support Resources</b>	<b>Details and Contact Information</b>
<b>Reseller Support</b>	If you purchased your Wirecast Gear from a reseller and did not also purchase GearCare Premium Support, please contact your reseller for product support.
<b>Telestream Wirecast Gear Support</b>	Customers who bought Wirecast Gear directly from Telestream may request support as outlined below. <ul style="list-style-type: none"><li>• Support Web Site: <a href="http://www.telestream.net/telestream-support/Wirecast-Gear/support.htm">http://www.telestream.net/telestream-support/Wirecast-Gear/support.htm</a></li><li>• Support Email: <a href="mailto:desktopsupport@telestream.net">desktopsupport@telestream.net</a></li></ul> Terms and times of support services vary, per the terms of your current service contract with Telestream.
<b>GearCare Premium Support</b>	Customers who bought GearCare Premium Support may request support as outlined below. Includes a 3-year extended warranty and overnight replacement. <ul style="list-style-type: none"><li>• US Support Phone: 1-844-550-5208</li><li>• International Support Phone: 1-530-470-2029</li><li>• Support Email: <a href="mailto:desktopsupport@telestream.net">desktopsupport@telestream.net</a></li></ul> See also the web sites above and below.
<b>Wirecast Information, Assistance, FAQs, Forums, &amp; Upgrades</b>	<ul style="list-style-type: none"><li>• Wirecast Web Site: <a href="http://www.telestream.net/telestream-support/wire-cast/support.htm">http://www.telestream.net/telestream-support/wire-cast/support.htm</a></li></ul>
<b>Telestream, LLC General Information</b>	<ul style="list-style-type: none"><li>• Web Site: <a href="http://www.telestream.net">www.telestream.net</a></li><li>• Sales and Marketing Email: <a href="mailto:info@telestream.net">info@telestream.net</a></li></ul> Physical location and mailing address: Telestream, LLC 848 Gold Flat Road Nevada City, CA USA 95959
<b>Telestream Technical Writers</b>	<ul style="list-style-type: none"><li>• Email: <a href="mailto:techwriter@telestream.net">techwriter@telestream.net</a></li></ul> Comments, corrections, or suggestions about this guide and other Telestream guides are encouraged.



# Return Merchandise Authorization (RMA) Procedure

If your Wirecast Gear needs service of any kind, see [Obtaining Support | Information | Assistance](#) on the previous page for contact information.

If you are instructed by Telestream Support to return your Wirecast Gear, follow the procedure below. Please do not return a Wirecast Gear unit unless you receive an RMA number from Telestream first.

Before returning your Wirecast Gear, Telestream recommends that you back up the entire contents of all computer drives.

## Support and RMA Process

1. Contact the reseller where your hardware was purchased for service. If you purchased directly from Telestream or your unit is covered by Premium Support, contact Telestream.
2. Telestream Support opens a support case for you.
3. Telestream Support follows an established drill-down to categorize the problem, and determine a resolution path.
4. If the problem is beyond our initial level of Support, our representatives will access and diagnose your device remotely. You will need to grant us Internet access to your device.
5. Upon a failed hardware diagnosis, our representative escalates the case to an RMA and gives you instructions for shipping the unit to our manufacturing partner for repair.
6. The RMA process triggers a case with our manufacturing partner.
  - a. If you have Premium Support, the manufacturing partner gathers your shipping and contact information and sends you an overnight replacement. The manufacturer will also give you instructions and an RMA for returning the failed unit.
  - b. If you do not have Premium Support, the manufacturing partner gives you instructions and an RMA for returning the failed unit and gathers your return shipping information. You are requested to ship the unit to our manufacturing partner for repair and return to you.
7. Upon case resolution, Telestream Support reviews and closes the case and sends you a satisfaction questionnaire.
8. We appreciate your business and ask you to return the questionnaire promptly so that we can continue to improve the quality of our product support to you and our other customers.



# Regulatory Compliance Statements

## Introduction

This section presents the Regulatory Compliance Statements for the Wirecast Gear models 310, 320 and 420. It also includes European Union and European Fair Trade Association Regulatory Compliance, along with Warning and Caution Messages

# Appendix – Safety & Compliance

---

## Federal Communications Commission (FCC) Compliance Notices

---

### Class A Interference Statement

---

This equipment has been tested and found to comply with the limits for a Class A digital device, pursuant to Part 15, Subpart B of the FCC Rules. These limits are designed to provide reasonable protection against harmful interference in a residential installation. This equipment generates, uses, and can radiate radio frequency energy and, if not installed and used in accordance with the instructions, may cause harmful interference to radio communications. However, there is no guarantee that interference will not occur in a particular installation. If this equipment does cause harmful interference to radio or television reception, which can be determined by turning the equipment off and on, the user is encouraged to try to correct the interference by one or more of the following measures:

- Reorient or relocate the receiving antenna.
- Increase the separation between the equipment and receiver.
- Consult the dealer or an experienced radio/TV technician for help.

### FCC Caution

---

This device complies with Part 15 of the FCC Rules. Operation is subject to the following two conditions: (1) This device may not cause harmful interference, and (2) this device must accept any interference received, including interference that may cause undesired operation.

## Canadian ICES Statement

---

### Canadian Department of Communications Radio Interference Regulations

This digital apparatus does not exceed the Class A limits for radio-noise emissions from a digital apparatus as set out in the Radio Interference Regulations of the Canadian Department of Communications. This Class A digital apparatus complies with Canadian ICES-003.

### Règlement sur le brouillage radioélectrique du ministère des Communications

Cet appareil numérique respecte les limites de bruits radioélectriques visant les appareils numériques de classe A prescrites dans le Règlement sur le brouillage radioélectrique du ministère des Communications du Canada. Cet appareil numérique de la Classe A est conforme à la norme NMB-003 du Canada.

## European Union and European Free Trade Association (EFTA) Regulatory Compliance

---

This equipment may be operated in the countries that comprise the member countries of the European Union and the European Free Trade Association. These countries, listed in the following paragraph, are referred to as The European Community throughout this document:

AUSTRIA, BELGIUM, BULGARIA, CYPRUS, CZECH REPUBLIC, DENMARK, ESTONIA, FINLAND, FRANCE, GERMANY, GREECE, HUNGARY, IRELAND, ITALY, LATVIA, LITHUANIA, LUXEMBOURG, MALTA, NETHERLANDS, POLAND, PORTUGAL, ROMANIA, SLOVAKIA, SLOVENIA, SPAIN, SWEDEN, UNITED KINGDOM, ICELAND, LICHTENSTEIN, NORWAY, SWITZERLAND

## Declaration of Conformity

Marking by this symbol indicates compliance with the Essential Requirements of the EMC Directive of the European Union 2014/30/EU.



This equipment meets the following conformance standards:

### Safety

EN 60950-1: 2006 +A11 +A1 +A12 +A2 (T-Mark License),

IEC 60950-1: 2005 + A1 + A2 (CB Scheme Report/Certificate)

Additional licenses issued for specific countries available on request.

### Emissions

EN 55032: 2012 + AC: 2013, CISPR 32: 2015,

EN 61000-3-2: 2014, EN 61000-3-3: 2013

### Immunity

EN 55024: 2010, CISPR 24: 2010, EN 61000-4-2: 2009,

EN 61000-4-3: 2006 + A1: 2008 + A2: 2010, EN 61000-4-4: 2012,

EN 61000-4-5: 2006, EN 61000-4-6: 2009, EN 61000-4-11: 2004

Environments: E2, E3 and E4

### Environmental

Low Voltage Directive 2014/35/EU, RoHS Directive 2011/65/EU + Annex II Amendment 2015/860,

REACH 2006/1907/EC, WEEE 2012/19/EU, Packaging Directive 94/62/EC, Battery Directive 2006/66/EC



**Warning!** This is a Class A product. In a domestic environment, this product may cause radio interference, in which case, the user may be required to take appropriate measures.

**Achtung!** Dieses ist ein Gerät der Funkstörgrenzwertklasse A. In Wohnbereichen können bei Betrieb dieses Gerätes Rundfunkstörungen auftreten, in welchen Fällen der Benutzer für entsprechende Gegenmaßnahmen verantwortlich ist.

**Attention!** Ceci est un produit de Classe A. Dans un environnement domestique, ce produit risque de créer des interférences radioélectriques, il appartiendra alors à l'utilisateur de prendre les mesures spécifiques appropriées..

## Recycling Notice



This symbol on the product or its packaging indicates that this product must not be disposed of with your other household waste. Instead, it is your responsibility to dispose of your waste equipment by handing it over to a designated collection point for the recycling of waste electrical and electronic equipment. The separate collection and recycling of your waste equipment at the time of disposal will help conserve natural resources and ensure that it is recycled in a manner that protects human health and the environment. For more information about where you can drop off your waste for recycling, please contact your local authority, or where you purchased your product.

## Translated Warning and Caution Messages

The following caution statements, warning conventions, and warning messages apply to this product and manual.



Warning Symbol



Hazard Symbol



Caution Symbol

## Before Operation Please Read These Instructions



**Warning!** Read and follow all warning notices and instructions marked on the product or included in the documentation.

**Avertissement!** Lisez et conformez-vous à tous les avis et instructions d'avertissement indiqués sur le produit ou dans la documentation.

**Warnung!** Lesen und befolgen Sie die Warnhinweise und Anweisungen, die auf dem Produkt angebracht oder in der Dokumentation enthalten sind.

**¡Advertencia!** Lea y siga todas las instrucciones y advertencias marcadas en el producto o incluidas en la documentación.

**Aviso!** Leia e siga todos os avisos e instruções assinalados no produto ou incluídos na documentação.

**Avviso!** Leggere e seguire tutti gli avvisi e le istruzioni presenti sul prodotto o inclusi nella documentazione.



**Warning!** Do not use this device near water and clean only with a dry cloth.

**Avertissement!** N'utilisez pas cet appareil près de l'eau et nettoyez-le seulement avec un tissu sec.

**Warnung!** Das Gerät nicht in der Nähe von Wasser verwenden und nur mit einem trockenen Tuch säubern.

**¡Advertencia!** No utilice este dispositivo cerca del agua y límpielo solamente con un paño seco.

**Aviso!** Não utilize este dispositivo perto da água e limpe-o somente com um pano seco.

**Avviso!** Non utilizzare questo dispositivo vicino all'acqua e pulirlo soltanto con un panno asciutto.



**Warning!** Do not open the chassis. There are no user-serviceable parts inside.

Opening the chassis will void the warranty unless performed by an AJA service center or licensed facility.

**Avertissement!** Ne pas ouvrir le châssis. Aucun élément à l'intérieur du châssis ne peut être réparé par l'utilisateur. La garantie sera annulée si le châssis est ouvert par toute autre personne qu'un technicien d'un centre de service ou d'un établissement agréé AJA.

**Warnung!** Öffnen Sie das Gehäuse nicht. Keine der Geräteteile können vom Benutzer gewartet werden. Durch das Öffnen des Gehäuses wird die Garantie hinfällig, es sei denn, solche Wartungsarbeiten werden in einem AJA-Service-Center oder einem lizenzierten Betrieb vorgenommen.

**¡Advertencia!** No abra el chasis. El interior no contiene piezas reparables por el usuario. El abrir el chasis anulará la garantía a menos que se lo haga en un centro de servicio AJA o en un local autorizado.

**Advertência!** Não abra o chassi. Não há internamente nenhuma peça que permita manutenção pelo usuário. Abrir o chassi anula a garantia, a menos que a abertura seja realizada por uma central de serviços da AJA ou por um local autorizado.

**Avvertenza!** Non aprire lo chassis. All'interno non ci sono parti riparabili dall'utente. L'apertura dello chassis invaliderà la garanzia se non viene effettuata da un centro ufficiale o autorizzato AJA.



**Warning!** Do not block any ventilation openings. Install in accordance with the manufacturer's instructions.

**Avertissement!** Ne bloquez aucune ouverture de ventilation. Suivez les instructions du fabricant lors de l'installation.

**Warnung!** Die Lüftungsöffnungen dürfen nicht blockiert werden. Nur gemäß den Anweisungen des Herstellers installieren.

**¡Advertencia!** No bloquee ninguna de las aberturas de la ventilación. Instale de acuerdo con las instrucciones del fabricante.

**Aviso!** Não obstrua nenhuma das aberturas de ventilação. Instale de acordo com as instruções do fabricante.

**Avviso!** Non ostruire le aperture di ventilazione. Installare in conformità con le istruzioni del fornitore.



**Warning!** Do not install near any heat sources such as radiators, heat registers, stoves, or other apparatus (including amplifiers) that produce heat.

**Avertissement!** N'installez pas l'appareil près d'une source de chaleur telle que des radiateurs, des bouches d'air de chauffage, des fourneaux ou d'autres appareils (amplificateurs compris) qui produisent de la chaleur.

**Warnung!** Nicht in der Nähe von Wärmequellen wie Heizkörpern, Heizregistern, Öfen oder anderen Wärme erzeugenden Geräten (einschließlich Verstärkern) aufstellen.

**¡Advertencia!** No instale cerca de fuentes de calor tales como radiadores, registros de calor, estufas u otros aparatos (incluidos amplificadores) que generan calor.

**Aviso!** Não instale perto de nenhuma fonte de calor tal como radiadores, saídas de calor, fogões ou outros aparelhos (incluindo amplificadores) que produzam calor.

**Avviso!** Non installare vicino a fonti di calore come termosifoni, diffusori di aria calda, stufe o altri apparecchi (amplificatori compresi) che emettono calore



**Warning!** Refer all servicing to qualified service personnel. Servicing is required when the device has been damaged in any way, such as power-supply cord or plug is damaged, liquid has been spilled or objects have fallen into the device, the device has been exposed to rain or moisture, does not operate normally, or has been dropped.

**Avertissement!** Référez-vous au personnel de service qualifié pour tout entretien. L'entretien est exigé quand l'appareil a été endommagé de quelque manière que ce soit, par exemple lorsque le cordon d'alimentation ou la prise sont endommagés, que du liquide a été versé ou des objets sont tombés dans l'appareil, que l'appareil a été exposé à la pluie ou à l'humidité, ne fonctionne pas normalement ou est tombé.

**Warnung!** Das Gerät sollte nur von qualifizierten Fachkräften gewartet werden. Eine Wartung ist fällig, wenn das Gerät in irgendeiner Weise beschädigt wurde, wie bei beschädigtem Netzkabel oder Netzstecker, falls Flüssigkeiten oder Objekte in das Gerät gelangen, das Gerät Regen oder Feuchtigkeit ausgesetzt wurde, nicht ordnungsgemäß funktioniert oder fallen gelassen wurde.

**¡Advertencia!** Consulte al personal calificado por cuestiones de reparación. El servicio de reparación se requiere cuando el dispositivo ha recibido cualquier tipo de daño, por ejemplo cable o espigas dañadas, se ha derramado líquido o se han caído objetos dentro del dispositivo, el dispositivo ha sido expuesto a la lluvia o humedad, o no funciona de modo normal, o se ha caído.

**Aviso!** Remeta todos os serviços de manutenção para o pessoal de assistência qualificado. A prestação de serviços de manutenção é exigida quando o dispositivo foi danificado mediante qualquer forma, como um cabo de alimentação ou ficha que se encontra danificado/a, quando foi derramado líquido ou caíram objectos sobre o dispositivo, quando o dispositivo foi exposto à chuva ou à humidade, quando não funciona normalmente ou quando foi deixado cair.

**Avviso!** Fare riferimento al personale qualificato per tutti gli interventi di assistenza. L'assistenza è necessaria quando il dispositivo è stato danneggiato in qualche modo, ad esempio se il cavo di alimentazione o la spina sono danneggiati, è stato rovesciato del liquido è stato rovesciato o qualche oggetto è caduto nel dispositivo, il dispositivo è stato esposto a pioggia o umidità, non funziona correttamente o è caduto



**Warning!** Disconnect the external AC power supply line cord(s) from the mains power before moving the unit.  
**Avertissement!** Retirez le ou les cordons d'alimentation en CA de la source d'alimentation principale lorsque vous déplacez l'appareil.  
**Warnung!** Trennen Sie die Wechselstrom-Versorgungskabel vom Netzstrom, bevor Sie das Gerät verschieben.  
**¡Advertencia!** Cuando mueva la unidad desenchufe de la red eléctrica el/los cable(s) de la fuente de alimentación CA tipo brick.  
**Advertência!** Remova os cabos CA de alimentação brick da rede elétrica ao mover a unidade.  
**Avvertenza!** Scollegare il cavo dell'alimentatore quando si sposta l'unità.



**Hazard!** High Voltage. This situation or condition can cause injury due to electric shock.  
**Avertissement!** Tension élevée. Cette situation ou condition peut causer des blessures dues à un choc électrique.  
**Warnung!** Hochspannung. Diese Situation oder Bedingung kann zu Verletzungen durch Stromschlag führen.  
**¡Advertencia!** Alto voltaje . Esta situación o condición puede causar lesiones debidas a una descarga eléctrica.  
**Aviso!** Alta Tensão . Esta situação ou condição pode causar danos devido a choques elétricos.  
**Avviso!** Alta tensione. Questa situazione o condizione può causare lesioni a causa di scosse elettriche.



**Warning!** Only use attachments and accessories specified and/or sold by the manufacturer.  
**Avertissement!** Utilisez seulement les attaches et accessoires spécifiés et/ou vendus par le fabricant.  
**Warnung!** Verwenden Sie nur Zusatzgeräte und Zubehör angegeben und / oder verkauft wurde durch den Hersteller.  
**¡Advertencia!** Utilice solamente los accesorios y conexiones especificados y/o vendidos por el fabricante.  
**Aviso!** Utilize apenas equipamentos/acessórios especificados e/ou vendidos pelo fabricante.  
**Avviso!** Utilizzare soltanto i collegamenti e gli accessori specificati e/o venduti dal produttore.



**Warning!** Unplug this device during lightning storms or when unused for long periods of time.  
**Avertissement!** Débranchez cet appareil pendant les orages avec éclairs ou s'il est inutilisé pendant de longues périodes.  
**Warnung!** Das Gerät ist bei Gewitterstürmen oder wenn es über lange Zeiträume ungenutzt bleibt vom Netz zu trennen.  
**¡Advertencia!** Desenchufe este dispositivo durante tormentas eléctricas o cuando no se lo utilice por largos periodos del tiempo.  
**Aviso!** Desconecte este dispositivo da tomada durante trovoadas ou quando não é utilizado durante longos períodos de tempo.  
**Avviso!** Utilizzare soltanto i collegamenti e gli accessori specificati e/o venduti dal produttore, quali il treppiedi e l'esoscheletro.



**Warning!** Do not defeat the safety purpose of the polarized or grounding-type plug. A polarized plug has two blades with one wider than the other. A grounding type plug has two blades and a third grounding prong. The wide blade or the third prong are provided for your safety. If the provided plug does not fit into your outlet, consult an electrician for replacement of the obsolete outlet.

**Avvertissement!** La sécurité de la prise polarisée ou de la prise de type mise à la terre ne doit en aucun cas être empêchée de fonctionner. Une prise polarisée a deux broches, l'une étant plus large que l'autre. Une prise de type mise à la terre a deux broches et une troisième broche pour la mise à la terre. La broche large ou la troisième broche sont fournies pour votre sécurité. Si la prise fournie ne s'insère pas dans votre prise femelle, consultez un électricien pour le remplacement de la prise femelle obsolète.

**Warnung!** Der Sicherheitszweck des gepolten bzw. Schukosteckers ist zu berücksichtigen. Ein gepolter Stecker verfügt über zwei Pole, von denen einer breiter als der andere ist. Ein Schukostecker verfügt neben den zwei Polen noch über einen dritten Pol zur Erdung. Der breite Pol bzw. der Erdungspol dienen der Sicherheit. Wenn der zur Verfügung gestellte Stecker nicht in Ihren Anschluss passt, konsultieren Sie einen Elektriker, um den veralteten Anschluss zu ersetzen.

**¡Advertencia!** No eche por tierra la finalidad del tipo de enchufe polarizado con conexión a tierra. Un enchufe polarizado tiene dos espigas, una más ancha que la otra. Un enchufe con conexión a tierra tiene dos espigas iguales y una tercera espiga que sirve para la conexión a tierra. La espiga ancha, o la tercera espiga, sirven para su seguridad. Si el enchufe suministrado no encaja en el tomacorriente, consulte con un electricista para reemplazar el tomacorriente obsoleto.

**Aviso!** Não anule a finalidade da segurança da ficha polarizada ou do tipo ligação terra. Uma ficha polarizada tem duas lâminas sendo uma mais larga do que a outra. Uma ficha do tipo de ligação à terra tem duas lâminas e um terceiro terminal de ligação à terra. A lâmina larga ou o terceiro terminal são fornecidos para sua segurança. Se a ficha fornecida não couber na sua tomada, consulte um electricista para a substituição da tomada obsoleta.

**Avviso!** Non compromettere la sicurezza della spina polarizzata o con messa a terra. Una spina polarizzata ha due spinotti, di cui uno più largo. Una spina con messa a terra ha due spinotti e un terzo polo per la messa a terra. Lo spinotto largo o il terzo polo sono forniti per motivi di sicurezza. Se la spina fornita non si inserisce nella presa di corrente, contattare un elettricista per la sostituzione della presa obsoleta.



**Warning!** Since the Mains plug is used as the disconnection for the device, it must remain readily accessible and operable.

**Avvertissement!** Puisque la prise principale est utilisée pour débrancher l'appareil, elle doit rester aisément accessible et fonctionnelle.

**Warnung!** Da der Netzstecker als Trennvorrichtung dient, muss er stets zugänglich und funktionsfähig sein.

**¡Advertencia!** Puesto que el enchufe de la red eléctrica se utiliza como dispositivo de desconexión, debe seguir siendo fácilmente accesible y operable.

**Aviso!** Dado que a ficha principal é utilizada como a desconexão para o dispositivo, esta deve manter-se prontamente acessível e funcional.

**Avviso!** Poiché il cavo di alimentazione viene usato come dispositivo di sconnessione, deve rimanere prontamente accessibile e operabile.

**Warning!** Protect the power cord from being walked on or pinched particularly at plugs, convenience receptacles, and the point where they exit from the device.

**Avertissement!** Protégez le cordon d'alimentation pour que l'on ne marche pas dessus ou qu'on le pince, en particulier au niveau des prises mâles, des réceptacles de convenance, et à l'endroit où il sort de l'appareil.

**Warnung!** Vermeiden Sie, dass auf das Netzkabel getreten oder das Kabel geknickt wird, insbesondere an den Steckern, den Steckdosen und am Kabelausgang am Gerät.

**¡Advertencia!** Proteja el cable de energía para que no se le pise ni apriete, en especial cerca del enchufe, los receptáculos de conveniencia y el punto del que salen del equipo.

**Aviso!** Proteja o cabo de alimentação de ser pisado ou de ser comprimido particularmente nas fichas, em tomadas de parede de conveniência e no ponto de onde sai do dispositivo.

**Avviso!** Proteggere il cavo di alimentazione in modo che nessuno ci cammini sopra e che non venga schiacciato soprattutto in corrispondenza delle spine e del punto in cui esce dal dispositivo.